

# Converting Colors

XYZ(61.9313, 61.1246, 67.5434)

Have a look what the booklet for  
XYZ(61.9313, 61.1246, 67.5434)  
contains.

|  |    |
|--|----|
| <b>XYZ(62.0410, 61.3431, 67.6020)</b> .....    | 3  |
| <b><i>Conversions</i></b> .....                | 4  |
| <b><i>Details</i></b> .....                    | 6  |
| <b><i>Harmonies</i></b> .....                  | 12 |
| <b><i>Previews</i></b> .....                   | 24 |
| <b><i>Color Blindness Simulation</i></b> ..... | 28 |
| <b><i>CSS Examples</i></b> .....               | 31 |

# Color

**XYZ(62.0410, 61.3431,  
67.6020)**

# Conversions

## Conversions Part 1

| Format      | Color                     |
|-------------|---------------------------|
| Hex         | DEC8CF                    |
| RGB         | 222, 200, 207             |
| RGB Percent | 87%, 78%, 81%             |
| CMY         | 0.1294, 0.2157, 0.1882    |
| CMYK        | 0.00, 0.10, 0.07, 0.13    |
| HSL         | 341°, 25%, 83%            |
| HSV         | 341°, 10%, 87%            |
| XYZ         | 62.0410, 61.3431, 67.6020 |
| YIQ         | 207.3760, 10.8650, 6.8410 |

# Conversions

## Conversions Part 2

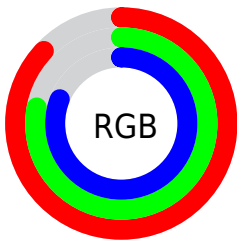
| Format                              | Color                         |
|-------------------------------------|-------------------------------|
| R <sub>Y</sub> B                    | 222, 200, 207                 |
| Decimal                             | 14600399                      |
| CIE Lab                             | 82.56, 8.89, -0.68            |
| CIE LCh                             | 83, 8.914, 355.599            |
| Yxy                                 | 61.3431, 0.3248,<br>0.3212    |
| Android<br>(android.graphics.Color) | 4292790479<br>(0xFFDEC8CF)    |
| YUV                                 | 207.3760, -0.1854,<br>12.8252 |
| Hunter-Lab                          | 78.3218, 4.3318,<br>3.6503    |

# Details

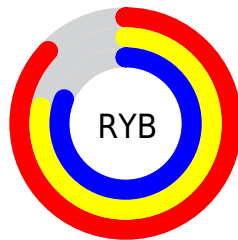
The XYZ color **62.0410, 61.3431, 67.6020** is a light color, and the websafe version is hex **CCCCCC**. A complement of this color would be **62.2088, 69.4299, 74.4159**, and the grayscale version is **59.5483, 62.6494, 68.2252**.

A 20% lighter version of the original color is **95.0500, 100.0000, 108.9000**, and **31.9650, 31.0732, 34.4500** is the 20% darker color. If you saturate the color by 10%, you get **55.5054, 51.0927, 56.7257**, and if you desaturate by 10%, it is **69.5041, 73.1629, 79.6645**.

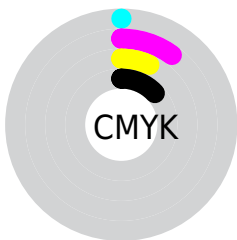
# Distribution



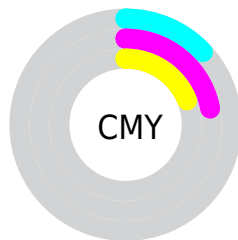
- Red (87%)
- Green (78%)
- Blue (81%)



- Red (87%)
- Yellow (78%)
- Blue (81%)



- Cyan (0%)
- Magenta (10%)
- Yellow (7%)
- Black (13%)



- Cyan (13%)
- Magenta (22%)
- Yellow (19%)

# Brightness & Saturation Gradients

These gradients show how the XYZ color 62.0410, 61.3431, 67.6020 changes by changing the brightness by 10 percent. The first figure shows a shift by +10% for each color and the second figure -10%.

Similar to the brightness gradients but the following saturation gradients show a change of the XYZ color 62.0410, 61.3431, 67.6020 by changing the saturation by 10% instead.



■ 62.0410, 61.3431,  
67.6020

■ 62.0410, 61.3431,  
67.6020

421.7958,  
429.5309, 470.6443

■ 45.3216, 44.5021,  
49.1093

106.8744,  
106.7756, 117.4314

■ 31.9131, 31.0654,  
34.3400

135.7190,  
136.1358, 149.6053

■ 21.4504, 20.6487,  
22.8755

169.3361,  
170.4380, 187.1766

■ 13.5679, 12.8675,  
14.2971

208.0910,  
210.0664, 230.5639

■ 7.9005, 7.3373,  
8.1865

252.3491,  
255.4055, 280.1858

■ 4.0826, 3.6739,  
4.1250

302.4757,

■ 1.7490, 1.4929,

306.8397, 336.4608

1.6942

358.8361,  
364.7534, 399.8075

■ 0.4866, 0.2837,  
0.3567

■ 0.0000, 0.0000,  
0.0000

■ 62.0410, 61.3431,  
67.6020

■ 62.0410, 61.3431,  
67.6020

■ 55.5054, 51.0927,  
56.7257

■ 69.5041, 73.1629,  
79.6645

■ 49.8552, 42.3376,  
46.9949

■ 77.9243, 86.6062,  
92.9445

■ 45.0524, 35.0098,  
38.3721

■ 83.5217, 94.1046,  
106.2054

■ 41.0545, 29.0326,  
30.8162

■ 83.9346, 94.2698,  
108.3798

■ 37.8149, 24.3223,  
24.2834

■ 35.2823, 20.7857,  
18.7266

■ 33.3983, 18.3167,  
14.0945

■ 32.0946, 16.7893,  
10.3299

■ 31.2562, 15.9860,  
7.3576

# Harmonies

## Analogous

The Analogous color harmony consists of three colors that are next to each other on the color wheel.



61.3856, 61.3431, 72.9082



62.0410, 61.3431, 67.6020



61.6775, 61.3431, 62.3531

# Triad

The Triadic color harmony groups three colors that are evenly spaced from another and form a triangle on the color wheel.



62.0410, 61.3431, 67.6020



56.7334, 61.3431, 57.7547



56.2558, 61.3431, 75.8452

# Complementary

The Complementary color scheme is a pair of colors which are on the opposite of each other on the color wheel.



62.0410, 61.3431, 67.6020



62.2088, 69.4299, 74.4159

# Split Complementary

Split-complementary colors differ from the complementary color scheme. The scheme consists of three colors, the original color and two neighbors of the complement color.



55.0573, 61.3431, 71.4372



62.0410, 61.3431, 67.6020



55.3288, 61.3431, 61.0282

# Square

The Square scheme is like the rectangle color scheme, but the four colors are evenly spaced on the color wheel.



62.0410, 61.3431, 67.6020



58.5869, 61.3431, 56.8512



54.7216, 61.3431, 65.9889



58.0236, 61.3431, 77.8293



# Rectangle

The Rectangle color scheme consists of four colors that form a rectangle on the color wheel.



62.0410, 61.3431, 67.6020



60.9104, 61.3431, 59.5608



54.7216, 61.3431, 65.9889



55.7745, 61.3431, 74.5865

# Sweetspot

The Sweet Spot groups the original color and five complimentary colors.



62.0427, 61.3458, 67.6033



91.8292, 94.8843, 103.7390



61.7678, 60.9820, 77.6234



19.4753, 20.0238, 21.9147



0.0000, 0.0000, 0.0000



20.3446, 21.4041, 23.3091



# Same Dimension

The Same Dimension uses a secret algorithm to generate beautiful new colors.



62.0427, 61.3458, 67.6033



82.8737, 80.7347, 89.1575



62.0653, 62.7297, 63.4836



13.8860, 13.7720, 15.1697



18.6061, 9.5095, 4.5916



1.3294, 0.6750, 0.5277



# Inverse Universe

The Inverse Universe completely reimagines the original color for something new.



62.0427, 61.3458, 67.6033



82.8737, 80.7347, 89.1575



62.1642, 67.8710, 78.9322



13.8860, 13.7720, 15.1697



18.6061, 9.5095, 4.5916

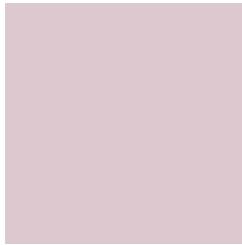


1.3294, 0.6750, 0.5277



# Previews

## White Background



This preview shows how the XYZ color 62.0410, 61.3431, 67.6020 looks on a white background.

## Color Contrast Check

Large Text (above 18pt) WCAG AA × Fail

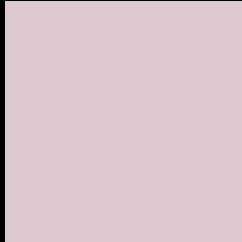
Any Text WCAG AA × Fail

Large Text (above 18pt) WCAG AAA × Fail

Any Text WCAG AAA × Fail



# Black Background



This preview shows how the XYZ color 62.0410, 61.3431, 67.6020 looks on a black background.

## Color Contrast Check

Large Text (above 18pt) WCAG AA ✓ Pass

Any Text WCAG AA ✓ Pass

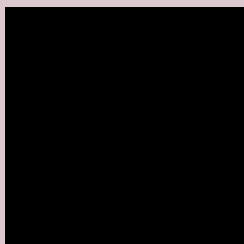
Large Text (above 18pt) WCAG AAA ✓ Pass

Any Text WCAG AAA ✓ Pass

If you want to check with other color combinations, try the [Color Contrast Checker](#).

**XYZ 62.0410, 61.3431, 67.6020**

## **Background**



This preview shows how black text looks on a background with the XYZ color 62.0410, 61.3431, 67.6020.



This preview shows how white text looks on a background with the XYZ color 62.0410, 61.3431,



# Color Blindness Simulation

Color vision deficiency is a very complex topic, and I could not describe the different causes any better than Wikipedia does, so if you want to learn more, you should check out their [article about color blindness](#).

## Dichromacy



### Original Color

62.0410, 61.3431, 67.6020

### Protanopia

59.2381, 61.2488, 69.6728

### Deuteranopia

62.7372, 61.3594, 67.5684



## Tritanopia

62.9924, 61.3899, 72.1477

# Trichromacy



## Original Color

62.0410, 61.3431, 67.6020

## Protanomaly

60.3051, 61.4615, 69.0064

## Deuteranomaly

62.4264, 61.1991, 67.5539

## Tritanomaly

62.6127, 61.2380, 70.1481

# Monochromacy



## Original Color

62.0410, 61.3431, 67.6020

## Achromatopsia

59.3074, 62.3960, 67.9493

## Achromatomaly

60.0067, 61.6878, 67.7757

# CSS Examples

## Text

The CSS property to change the color of the text to XYZ 62.0410, 61.3431, 67.6020 is called "color". The color property can be set on classes, ids or directly on the HTML element.

This example shows how text in the color `rgb(222, 200, 207)` looks like.

```
.text, #text, p{  
    color:rgb(222, 200, 207)  
}
```

If you want to add a text shadow in that color use the text-shadow property, you can generate a text shadow directly with our [CSS Text Shadow Generator](#).

Here you see how black text with a 4 pixel rgb(222, 200, 207) colored shadow looks like.

```
.shadow{ text-shadow: 4px 4px 2px rgb(222, 200, 207) }
```

## Border

The CSS property to change the border of an element to XYZ 62.0410, 61.3431, 67.6020 is called "border". The border property can be set on classes, ids or directly on the HTML element.

This example shows the color as border, it can be applied via the CSS property "border" or "border-color".

```
.border, #border, table{ border:4px solid rgb(222, 200, 207) }
```



If only the border color should be changed use the property border-color.

```
.border{ border-color:rgb(222, 200, 207) }
```

If you want to add a box shadow in that color use:

Here you see how a box with a 4 pixel rgb(222, 200, 207) colored shadow looks like.

```
.boxshadow{ -moz-box-shadow:4px 4px 4px  
4px rgb(222, 200, 207); -webkit-box-  
shadow:4px 4px 4px 4px rgb(222, 200, 207);  
box-shadow:4px 4px 4px 4px rgb(222, 200,  
207) }
```

# Background

The CSS property to change the background color of an element to XYZ 62.0410, 61.3431, 67.6020 is called "background". The background property can be set on classes, ids or directly on the HTML element.

```
.background, #background, body{  
background: rgb(222, 200, 207) }
```

If only the background color should be changed can be used:

```
.background{ background-color: rgb(222,  
200, 207) }
```

This example shows the color as background, it is applied via the CSS property "background".

To optimize and compress your CSS code, you can use our [online CSS compressor and optimizer](#) based on csstidy. If you want to create a linear or radial gradient as background or border, check our [CSS Gradient Generator](#).

Hey! You found this booklet interesting? Support Converting Colors with the new Membership Option!

The pro membership hides all ads, plus gives you double the colors in the color bucket, and more awesome pro features!

**[Learn more, Memberships starting at \\$2.50/m!](#)**

**Follow me  
on Twitter!**

@ConvertingColor