

Converting Colors

XYZ(61.9436, 61.2189, 54.3403)

Have a look what the booklet for
XYZ(61.9436, 61.2189, 54.3403)
contains.

XYZ(62.1354, 61.3386, 54.4636) 3
 ***Conversions* 4**
 ***Details* 6**
 ***Harmonies* 12**
 ***Previews* 24**
 ***Color Blindness Simulation* 28**
 ***CSS Examples* 31**

Color

**XYZ(62.1354, 61.3386,
54.4636)**

Conversions

Conversions Part 1

Format	Color
Hex	E7C7B9
RGB	231, 199, 185
RGB Percent	91%, 78%, 73%
CMY	0.0941, 0.2196, 0.2745
CMYK	0.00, 0.14, 0.20, 0.09
HSL	18°, 49%, 82%
HSV	18°, 20%, 91%
XYZ	62.1354, 61.3386, 54.4636
YIQ	206.9720, 23.5660, 2.4300

Conversions

Conversions Part 2

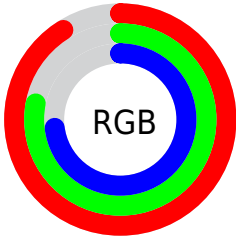
Format	Color
R _Y B	231, 205, 185
Decimal	15189945
CIE Lab	82.56, 9.12, 11.17
CIE LCh	83, 14.419, 50.777
Yxy	61.3386, 0.3492, 0.3447
Android (android.graphics.Color)	4293380025 (0xFFE7C7B9)
YUV	206.9720, -10.8322, 21.0726
Hunter-Lab	78.3190, 4.5572, 13.5926

Details

The XYZ color **62.1354, 61.3386, 54.4636** is a light color, and the websafe version is hex **FFCCCC**. A complement of this color would be **59.2438, 65.7079, 85.1621**, and the grayscale version is **59.3485, 62.4392, 67.9963**.

A 20% lighter version of the original color is **92.8772, 99.1309, 97.4581**, and **31.9695, 31.0307, 26.1343** is the 20% darker color. If you saturate the color by 10%, you get **56.3888, 53.4357, 41.4786**, and if you desaturate by 10%, it is **68.6719, 70.1862, 69.6680**.

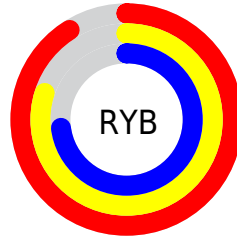
Distribution



Red (91%)

Green (78%)

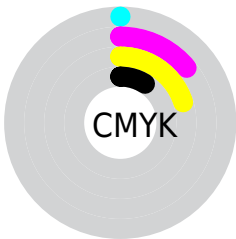
Blue (73%)



Red (91%)

Yellow (80%)

Blue (73%)

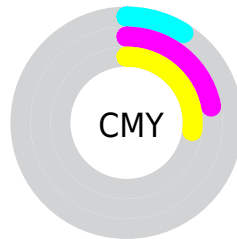


Cyan (0%)

Magenta (14%)

Yellow (20%)

Black (9%)



Cyan (9%)

Magenta (22%)


Yellow (27%)

Brightness & Saturation Gradients


These gradients show how the XYZ color 62.1354, 61.3386, 54.4636 changes by changing the brightness by 10 percent. The first figure shows a shift by +10% for each color and the second figure -10%.


Similar to the brightness gradients but the following saturation gradients show a change of the XYZ color 62.1354, 61.3386, 54.4636 by changing the saturation by 10% instead.

 62.1354, 61.3386,
54.4636

 62.1354, 61.3386,
54.4636


422.1345,
429.5144, 421.0999

 45.3981, 44.4985,
38.5767


 107.0100,
106.7690, 98.2179

 31.9737, 31.0626,
26.1253


135.8781,
136.1282, 126.9223

 21.4969, 20.6465,
16.6908


169.5205,
170.4291, 160.7364

 13.6022, 12.8659,
9.8547

208.3025,
210.0562, 200.0786

 7.9244, 7.3362,
5.1984

252.5896,
255.3939, 245.3676

 4.0980, 3.6733,
2.3033

302.7471,

 1.7577, 1.4925,

306.8266, 297.0217

0.7331

359.1402,
364.7386, 355.4596

■ 0.4920, 0.2835,
0.0000

■ 0.0000, 0.0000,
0.0000

■ 62.1354, 61.3386,
54.4636

■ 62.1354, 61.3386,
54.4636

■ 56.3888, 53.4357,
41.4786

■ 68.6719, 70.1862,
69.6680

■ 51.3960, 46.4375,
30.6046

■ 76.0227, 80.0004,
87.1855

■ 47.1253, 40.3131,
21.7295

■ 84.2173, 90.8128,
107.1094

■ 43.5406, 35.0268,
14.7296

■ 86.7652, 95.7290,
108.5123

■ 40.6025, 30.5400,
9.4670

■ 38.2670, 26.8109,
5.7846

■ 36.4835, 23.7933,
3.4962

■ 35.1758, 21.4284,
2.2879

■ 35.1659, 21.4104,
2.2792

Harmonies

Analogous

The Analogous color harmony consists of three colors that are next to each other on the color wheel.



64.0287, 61.3386, 60.9363



62.1354, 61.3386, 54.4636



59.2572, 61.3386, 51.3724

Triad

The Triadic color harmony groups three colors that are evenly spaced from another and form a triangle on the color wheel.



62.1354, 61.3386, 54.4636



52.6351, 61.3386, 64.0992



60.4317, 61.3386, 83.9771

Complementary

The Complementary color scheme is a pair of colors which are on the opposite of each other on the color wheel.



62.1354, 61.3386, 54.4636



59.2438, 65.7079, 85.1621

Split Complementary

Split-complementary colors differ from the complementary color scheme. The scheme consists of three colors, the original color and two neighbors of the complement color.



57.3542, 61.3386, 85.0133



62.1354, 61.3386, 54.4636



52.9245, 61.3386, 73.0014

Square

The Square scheme is like the rectangle color scheme, but the four colors are evenly spaced on the color wheel.



62.1354, 61.3386, 54.4636



53.8216, 61.3386, 56.6033



54.6267, 61.3386, 80.8425



63.0212, 61.3386, 78.1249

Rectangle

The Rectangle color scheme consists of four colors that form a rectangle on the color wheel.



62.1354, 61.3386, 54.4636



57.1976, 61.3386, 51.4396



54.6267, 61.3386, 80.8425



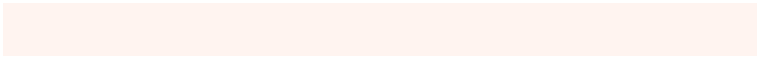
59.4175, 61.3386, 84.9193

Sweetspot

The Sweet Spot groups the original color and five complimentary colors.



62.1371, 61.3414, 54.4649



89.3822, 92.4505, 95.3384



62.8550, 56.7078, 73.4156



19.0043, 19.6181, 20.1043



0.0000, 0.0000, 0.0000



20.3446, 21.4041, 23.3091

Same Dimension

The Same Dimension uses a secret algorithm to generate beautiful new colors.



62.1371, 61.3414, 54.4649



74.6068, 72.4494, 60.9732



67.7807, 72.6286, 56.3461



14.7330, 15.0799, 15.0387



19.8103, 12.1947, 1.3097



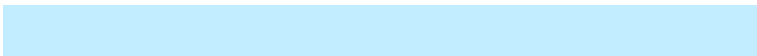
1.5436, 1.0605, 0.1233

Inverse Universe

The Inverse Universe completely reimagines the original color for something new.



59.2438, 65.7079, 85.1621



70.3483, 78.8659, 106.1226



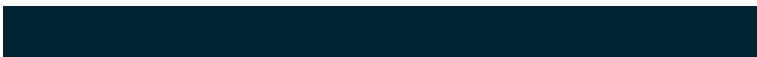
53.7685, 54.7573, 83.3370



14.4177, 15.5568, 18.3872



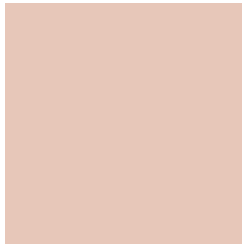
15.3135, 17.6890, 44.9904



1.2126, 1.4691, 3.3516

Previews

White Background



This preview shows how the XYZ color 62.1354, 61.3386, 54.4636 looks on a white background.

Color Contrast Check

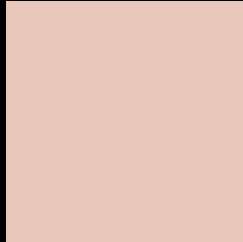
Large Text (above 18pt) WCAG AA × Fail

Any Text WCAG AA × Fail

Large Text (above 18pt) WCAG AAA × Fail

Any Text WCAG AAA × Fail

Black Background



This preview shows how the XYZ color 62.1354, 61.3386, 54.4636 looks on a black background.

Color Contrast Check

Large Text (above 18pt) WCAG AA ✓ Pass

Any Text WCAG AA ✓ Pass

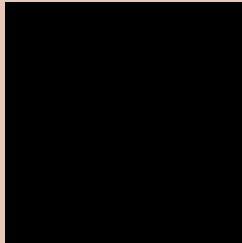
Large Text (above 18pt) WCAG AAA ✓ Pass

Any Text WCAG AAA ✓ Pass

If you want to check with other color combinations, try the [Color Contrast Checker](#).

XYZ 62.1354, 61.3386, 54.4636

Background



This preview shows how black text looks on a background with the XYZ color 62.1354, 61.3386, 54.4636.



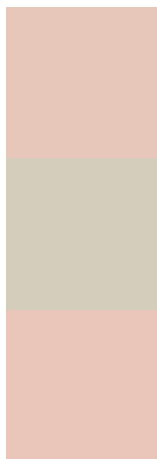
This preview shows how white text looks on a background with the XYZ color 62.1354, 61.3386,

54.4636.

Color Blindness Simulation

Color vision deficiency is a very complex topic, and I could not describe the different causes any better than Wikipedia does, so if you want to learn more, you should check out their [article about color blindness](#).

Dichromacy



Original Color

62.1354, 61.3386, 54.4636

Protanopia

58.3490, 61.4396, 56.3607

Deuteranopia

62.5553, 61.2146, 54.4175



Tritanopia

65.0796, 61.1758, 69.3508

Trichromacy



Original Color

62.1354, 61.3386, 54.4636

Protanomaly

59.8408, 61.5154, 55.7334

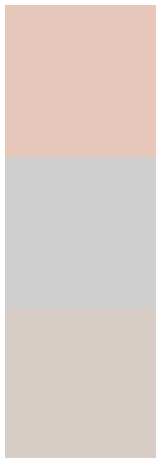
Deuteranomaly

62.2298, 61.0468, 54.4023

Tritanomaly

63.8868, 61.0205, 63.6693

Monochromacy



Original Color

62.1354, 61.3386, 54.4636

Achromatopsia

59.3074, 62.3960, 67.9493

Achromatomaly

60.2206, 61.9082, 62.8083

CSS Examples

Text

The CSS property to change the color of the text to XYZ 62.1354, 61.3386, 54.4636 is called "color". The color property can be set on classes, ids or directly on the HTML element.

This example shows how text in the color `rgb(231, 199, 185)` looks like.

```
.text, #text, p{  
    color:rgb(231, 199, 185)  
}
```

If you want to add a text shadow in that color use the text-shadow property, you can generate a text shadow directly with our [CSS Text Shadow Generator](#).

Here you see how black text with a 4 pixel rgb(231, 199, 185) colored shadow looks like.

```
.shadow{ text-shadow: 4px 4px 2px rgb(231, 199, 185) }
```

Border

The CSS property to change the border of an element to XYZ 62.1354, 61.3386, 54.4636 is called "border". The border property can be set on classes, ids or directly on the HTML element.

This example shows the color as border, it can be applied via the CSS property "border" or "border-color".

```
.border, #border, table{ border:4px solid rgb(231, 199, 185) }
```


If only the border color should be changed use the property `border-color`.

```
.border{ border-color:rgb(231, 199, 185) }
```

If you want to add a box shadow in that color use:

Here you see how a box with a 4 pixel `rgb(231, 199, 185)` colored shadow looks like.

```
.boxshadow{ -moz-box-shadow:4px 4px 4px  
4px rgb(231, 199, 185); -webkit-box-  
shadow:4px 4px 4px 4px rgb(231, 199, 185);  
box-shadow:4px 4px 4px 4px rgb(231, 199,  
185) }
```

Background

The CSS property to change the background color of an element to XYZ 62.1354, 61.3386, 54.4636 is called "background". The background property can be set on classes, ids or directly on the HTML element.

```
.background, #background, body{  
background: rgb(231, 199, 185) }
```

If only the background color should be changed can be used:

```
.background{ background-color: rgb(231,  
199, 185) }
```

This example shows the color as background, it is applied via the CSS property "background".

To optimize and compress your CSS code, you can use our [online CSS compressor and optimizer](#) based on csstidy. If you want to create a linear or radial gradient as background or border, check our [CSS Gradient Generator](#).

Hey! You found this booklet interesting? Support Converting Colors with the new Membership Option!

The pro membership hides all ads, plus gives you double the colors in the color bucket, and more awesome pro features!

[Learn more, Memberships starting at \\$2.50/m!](#)

**Follow me
on Twitter!**

@ConvertingColor