

Converting Colors

XYZ(61.9555, 60.9300, 67.1735)

Have a look what the booklet for
XYZ(61.9555, 60.9300, 67.1735)
contains.

XYZ(61.9954, 60.9911, 66.8975)	3
<i>Conversions</i>	4
<i>Details</i>	6
<i>Harmonies</i>	12
<i>Previews</i>	24
<i>Color Blindness Simulation</i>	28
<i>CSS Examples</i>	31

Color

**XYZ(61.9954, 60.9911,
66.8975)**

Conversions

Conversions Part 1

Format	Color
Hex	DFC7CE
RGB	223, 199, 206
RGB Percent	87%, 78%, 81%
CMY	0.1255, 0.2196, 0.1922
CMYK	0.00, 0.11, 0.08, 0.13
HSL	343°, 27%, 83%
HSV	343°, 11%, 87%
XYZ	61.9954, 60.9911, 66.8975
YIQ	206.9740, 12.0570, 7.2650

Conversions

Conversions Part 2

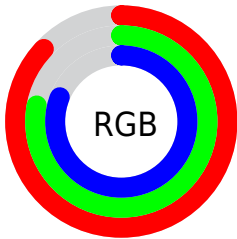
Format	Color
R _Y B	223, 199, 206
Decimal	14665678
CIE Lab	82.37, 9.60, -0.41
CIE LCh	82, 9.604, 357.524
Yxy	60.9911, 0.3265, 0.3212
Android (android.graphics.Color)	4292855758 (0xFFDFC7CE)
YUV	206.9740, -0.4802, 14.0548
Hunter-Lab	78.0968, 5.0288, 3.8801

Details

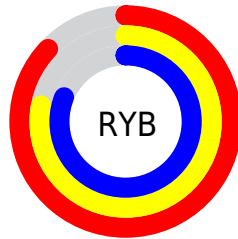
The XYZ color **61.9954, 60.9911, 66.8975** is a light color, and the websafe version is hex **CCCCCC**. A complement of this color would be **62.3379, 69.8768, 75.1711**, and the grayscale version is **59.2905, 62.3782, 67.9298**.

A 20% lighter version of the original color is **95.0500, 100.0000, 108.9000**, and **31.9413, 30.8426, 33.9755** is the 20% darker color. If you saturate the color by 10%, you get **55.4122, 50.7427, 55.7054**, and if you desaturate by 10%, it is **69.5269, 72.8257, 79.3590**.

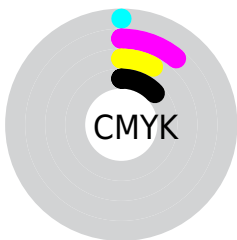
Distribution



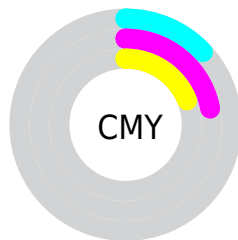
- Red (87%)
- Green (78%)
- Blue (81%)



- Red (87%)
- Yellow (78%)
- Blue (81%)



- Cyan (0%)
- Magenta (11%)
- Yellow (8%)
- Black (13%)



- Cyan (13%)
- Magenta (22%)
- Yellow (19%)

Brightness & Saturation Gradients

These gradients show how the XYZ color 61.9954, 60.9911, 66.8975 changes by changing the brightness by 10 percent. The first figure shows a shift by +10% for each color and the second figure -10%.

Similar to the brightness gradients but the following saturation gradients show a change of the XYZ color 61.9954, 60.9911, 66.8975 by changing the saturation by 10% instead.

61.9954, 60.9911,
66.8975

61.9954, 60.9911,
66.8975

421.6321,
428.2414, 468.0714

45.2846, 44.2180,
48.5403

106.8089,
106.2661, 116.4128

31.8839, 30.8419,
33.8919

135.6422,
135.5367, 148.4079

21.4279, 20.4785,
22.5339

169.2471,
169.7419, 185.7861

13.5514, 12.7433,
14.0477

207.9889,
209.2662, 228.9658

7.8889, 7.2521,
8.0147

252.2329,
254.4939, 278.3657

4.0752, 3.6202,
4.0164

302.3446,

1.7447, 1.4635,

305.8094, 334.4042

1.6344

358.6892,
363.5971, 397.4999

■ 0.4840, 0.2628,
0.3152

■ 0.0000, 0.0000,
0.0000

■ 61.9954, 60.9911,
66.8975

■ 61.9954, 60.9911,
66.8975

■ 55.4122, 50.7427,
55.7054

■ 69.5269, 72.8257,
79.3590

■ 49.7338, 42.0051,
45.7381

■ 78.0375, 86.3019,
93.1247

■ 44.9211, 34.7087,
36.9539

■ 83.9846, 94.3253,
107.0403

■ 40.9300, 28.7753,
29.3073

■ 84.2417, 94.4281,
108.3942

■ 37.7123, 24.1191,
22.7497

■ 35.2147, 20.6446,
17.2287

■ 33.3765, 18.2427,
12.6871

■ 32.1264, 16.7835,
9.0612

■ 31.3863, 16.0700,
6.4511

Harmonies

Analogous

The Analogous color harmony consists of three colors that are next to each other on the color wheel.



61.3572, 60.9911, 72.6525



61.9954, 60.9911, 66.8975



61.5341, 60.9911, 61.3308

Triad

The Triadic color harmony groups three colors that are evenly spaced from another and form a triangle on the color wheel.



61.9954, 60.9911, 66.8975



56.1688, 60.9911, 56.8984



55.8807, 60.9911, 76.3880

Complementary

The Complementary color scheme is a pair of colors which are on the opposite of each other on the color wheel.



61.9954, 60.9911, 66.8975



62.3379, 69.8768, 75.1711

Split Complementary

Split-complementary colors differ from the complementary color scheme. The scheme consists of three colors, the original color and two neighbors of the complement color.



54.5466, 60.9911, 71.7599



61.9954, 60.9911, 66.8975



54.7102, 60.9911, 60.5337

Square

The Square scheme is like the rectangle color scheme, but the four colors are evenly spaced on the color wheel.



61.9954, 60.9911, 66.8975



58.1406, 60.9911, 55.7637



54.1231, 60.9911, 65.9228



57.8002, 60.9911, 78.3295

Rectangle

The Rectangle color scheme consists of four colors that form a rectangle on the color wheel.



61.9954, 60.9911, 66.8975



60.6711, 60.9911, 58.4309



54.1231, 60.9911, 65.9228



55.3507, 60.9911, 75.0820

Sweetspot

The Sweet Spot groups the original color and five complimentary colors.



61.9971, 60.9938, 66.8988



91.7975, 94.8716, 103.5717



62.0046, 60.7460, 78.2698



19.4667, 20.0204, 21.8696



0.0000, 0.0000, 0.0000



20.3446, 21.4041, 23.3091

Same Dimension

The Same Dimension uses a secret algorithm to generate beautiful new colors.



61.9971, 60.9938, 66.8988



81.8181, 79.2216, 86.9623



62.2876, 62.9048, 62.8951



13.8708, 13.7659, 15.0897



18.4973, 9.4659, 4.0188



1.3204, 0.6714, 0.4800

Inverse Universe

The Inverse Universe completely reimagines the original color for something new.



61.9971, 60.9938, 66.8988



81.8181, 79.2216, 86.9623



61.9978, 67.7182, 79.6159



13.8708, 13.7659, 15.0897



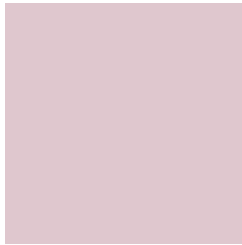
18.4973, 9.4659, 4.0188



1.3204, 0.6714, 0.4800

Previews

White Background



This preview shows how the XYZ color 61.9954, 60.9911, 66.8975 looks on a white background.

Color Contrast Check

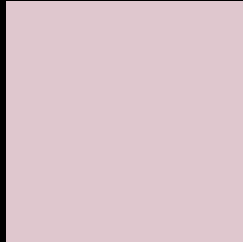
Large Text (above 18pt) WCAG AA × Fail

Any Text WCAG AA × Fail

Large Text (above 18pt) WCAG AAA × Fail

Any Text WCAG AAA × Fail

Black Background



This preview shows how the XYZ color 61.9954, 60.9911, 66.8975 looks on a black background.

Color Contrast Check

Large Text (above 18pt) WCAG AA ✓ Pass

Any Text WCAG AA ✓ Pass

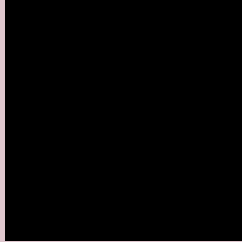
Large Text (above 18pt) WCAG AAA ✓ Pass

Any Text WCAG AAA ✓ Pass

If you want to check with other color combinations, try the [Color Contrast Checker](#).

XYZ 61.9954, 60.9911, 66.8975

Background



This preview shows how black text looks on a background with the XYZ color 61.9954, 60.9911, 66.8975.



This preview shows how white text looks on a background with the XYZ color 61.9954, 60.9911,

Color Blindness Simulation

Color vision deficiency is a very complex topic, and I could not describe the different causes any better than Wikipedia does, so if you want to learn more, you should check out their [article about color blindness](#).

Dichromacy



Original Color

61.9954, 60.9911, 66.8975

Protanopia

58.8336, 61.0546, 69.0054

Deuteranopia

62.3045, 61.1504, 66.9119



Tritanopia

62.9448, 61.0396, 71.4151

Trichromacy



Original Color

61.9954, 60.9911, 66.8975

Protanomaly

59.9463, 60.9413, 68.2778

Deuteranomaly

62.3045, 61.1504, 66.9119

Tritanomaly

62.5674, 60.8886, 69.4278

Monochromacy



Original Color

61.9954, 60.9911, 66.8975

Achromatopsia

59.3074, 62.3960, 67.9493

Achromatomaly

60.2959, 61.8369, 67.7893

CSS Examples

Text

The CSS property to change the color of the text to XYZ 61.9954, 60.9911, 66.8975 is called "color". The color property can be set on classes, ids or directly on the HTML element.

This example shows how text in the color `rgb(223, 199, 206)` looks like.

```
.text, #text, p{  
    color:rgb(223, 199, 206)  
}
```

If you want to add a text shadow in that color use the text-shadow property, you can generate a text shadow directly with our [CSS Text Shadow Generator](#).

Here you see how black text with a 4 pixel rgb(223, 199, 206) colored shadow looks like.

```
.shadow{ text-shadow: 4px 4px 2px rgb(223, 199, 206) }
```

Border

The CSS property to change the border of an element to XYZ 61.9954, 60.9911, 66.8975 is called "border". The border property can be set on classes, ids or directly on the HTML element.

This example shows the color as border, it can be applied via the CSS property "border" or "border-color".

```
.border, #border, table{ border:4px solid rgb(223, 199, 206) }
```


If only the border color should be changed use the property `border-color`.

```
.border{ border-color:rgb(223, 199, 206) }
```

If you want to add a box shadow in that color use:

Here you see how a box with a 4 pixel `rgb(223, 199, 206)` colored shadow looks like.

```
.boxshadow{ -moz-box-shadow:4px 4px 4px  
4px rgb(223, 199, 206); -webkit-box-  
shadow:4px 4px 4px 4px rgb(223, 199, 206);  
box-shadow:4px 4px 4px 4px rgb(223, 199,  
206) }
```

Background

The CSS property to change the background color of an element to XYZ 61.9954, 60.9911, 66.8975 is called "background". The background property can be set on classes, ids or directly on the HTML element.

```
.background, #background, body{  
background: rgb(223, 199, 206) }
```

If only the background color should be changed can be used:

```
.background{ background-color: rgb(223,  
199, 206) }
```

This example shows the color as background, it is applied via the CSS property "background".

To optimize and compress your CSS code, you can use our [online CSS compressor and optimizer](#) based on csstidy. If you want to create a linear or radial gradient as background or border, check our [CSS Gradient Generator](#).

Hey! You found this booklet interesting? Support Converting Colors with the new Membership Option!

The pro membership hides all ads, plus gives you double the colors in the color bucket, and more awesome pro features!

[Learn more, Memberships starting at \\$2.50/m!](#)

**Follow me
on Twitter!**

@ConvertingColor