

Converting Colors

XYZ(61.9886, 62.6070, 67.7943)

Have a look what the booklet for
XYZ(61.9886, 62.6070, 67.7943)
contains.

XYZ(62.0688, 62.7508, 67.8722)	3
<i>Conversions</i>	4
<i>Details</i>	6
<i>Harmonies</i>	12
<i>Previews</i>	24
<i>Color Blindness Simulation</i>	28
<i>CSS Examples</i>	31

Color

**XYZ(62.0688, 62.7508,
67.8722)**

Conversions

Conversions Part 1

Format	Color
Hex	DBCCCF
RGB	219, 204, 207
RGB Percent	86%, 80%, 81%
CMY	0.1412, 0.2000, 0.1882
CMYK	0.00, 0.07, 0.05, 0.14
HSL	348°, 17%, 83%
HSV	348°, 7%, 86%
XYZ	62.0688, 62.7508, 67.8722
YIQ	208.8270, 7.9770, 4.1130

Conversions

Conversions Part 2

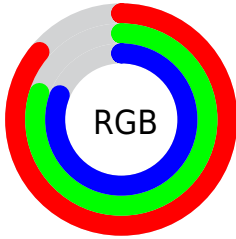
Format	Color
R _Y B	219, 204, 207
Decimal	14404815
CIE Lab	83.31, 5.73, 0.38
CIE LCh	83, 5.740, 3.787
Yxy	62.7508, 0.3221, 0.3257
Android (android.graphics.Color)	4292594895 (0xFFDBCCCF)
YUV	208.8270, -0.9007, 8.9217
Hunter-Lab	79.2154, 1.2358, 4.6508

Details

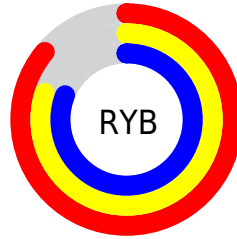
The XYZ color **62.0688, 62.7508, 67.8722** is a light color, and the websafe version is hex **CCCCCC**. A complement of this color would be **62.6305, 68.4600, 74.8823**, and the grayscale version is **60.4951, 63.6456, 69.3100**.

A 20% lighter version of the original color is **95.0500, 100.0000, 108.9000**, and **31.9660, 32.0051, 34.6298** is the 20% darker color. If you saturate the color by 10%, you get **55.2005, 52.2541, 55.5926**, and if you desaturate by 10%, it is **69.9104, 74.8119, 81.6510**.

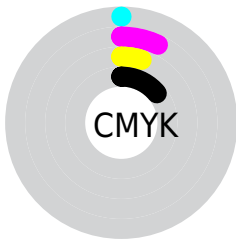
Distribution



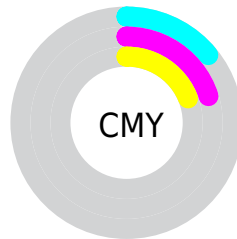
- Red (86%)
- Green (80%)
- Blue (81%)



- Red (86%)
- Yellow (80%)
- Blue (81%)



- Cyan (0%)
- Magenta (7%)
- Yellow (5%)
- Black (14%)



- Cyan (14%)
- Magenta (20%)
- Yellow (19%)

Brightness & Saturation Gradients

These gradients show how the XYZ color 62.0688, 62.7508, 67.8722 changes by changing the brightness by 10 percent. The first figure shows a shift by +10% for each color and the second figure -10%.

Similar to the brightness gradients but the following saturation gradients show a change of the XYZ color 62.0688, 62.7508, 67.8722 by changing the saturation by 10% instead.

■ 62.0688, 62.7508,
67.8722

■ 62.0688, 62.7508,
67.8722

421.8956,
434.6645, 471.6288

■ 45.3441, 45.6396,
49.3277

106.9143,
108.8099, 117.8218

■ 31.9310, 31.9615,
34.5121

135.7659,
138.5267, 150.0640

■ 21.4641, 21.3321,
23.0067

169.3904,
173.2140, 187.7092

■ 13.5780, 13.3670,
14.3931

208.1533,
213.2565, 231.1759

■ 7.9075, 7.6817,
8.2527

252.4199,
259.0383, 280.8827

■ 4.0871, 3.8920,
4.1670

302.5556,

■ 1.7515, 1.6133,

310.9440, 337.2481

1.7174

358.9257,
369.3580, 400.6906

■ 0.4882, 0.3666,
0.3726

■ 0.0000, 0.0000,
0.0000

■ 62.0688, 62.7508,
67.8722

■ 62.0688, 62.7508,
67.8722

■ 55.2005, 52.2541,
55.5926

■ 69.9104, 74.8119,
81.6510

■ 49.2620, 43.2497,
44.7574

■ 78.7560, 88.4894,
96.9734

■ 44.2145, 35.6722,
35.3141

■ 83.0238, 93.8003,
108.3372

■ 40.0144, 29.4479,
27.2056

■ 36.6141, 24.4967,
20.3708

■ 33.9615, 20.7300,
14.7438

■ 31.9979, 18.0474,
10.2524

■ 30.6557, 16.3323,
6.8163

■ 29.8491, 15.4343,
4.3428

Harmonies

Analogous

The Analogous color harmony consists of three colors that are next to each other on the color wheel.



61.8211, 62.7508, 71.4051



62.0688, 62.7508, 67.8722



61.6590, 62.7508, 64.5748

Triad

The Triadic color harmony groups three colors that are evenly spaced from another and form a triangle on the color wheel.



62.0688, 62.7508, 67.8722



58.3185, 62.7508, 62.7721



58.5893, 62.7508, 74.6764

Complementary

The Complementary color scheme is a pair of colors which are on the opposite of each other on the color wheel.



62.0688, 62.7508, 67.8722



62.6305, 68.4600, 74.8823

Split Complementary

Split-complementary colors differ from the complementary color scheme. The scheme consists of three colors, the original color and two neighbors of the complement color.



57.6710, 62.7508, 72.2175



62.0688, 62.7508, 67.8722



57.5162, 62.7508, 65.3347

Square

The Square scheme is like the rectangle color scheme, but the four colors are evenly spaced on the color wheel.



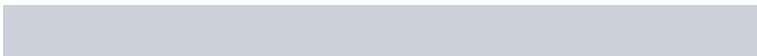
62.0688, 62.7508, 67.8722



59.4845, 62.7508, 61.6958



57.2808, 62.7508, 68.7797



59.8013, 62.7508, 75.4127

Rectangle

The Rectangle color scheme consists of four colors that form a rectangle on the color wheel.



62.0688, 62.7508, 67.8722



61.0714, 62.7508, 62.9299



57.2808, 62.7508, 68.7797



58.2366, 62.7508, 74.0198

Sweetspot

The Sweet Spot groups the original color and five complimentary colors.



62.0706, 62.7535, 67.8736



92.7944, 96.5290, 104.9410



62.7000, 62.9020, 75.8554



19.8854, 20.6975, 22.5032



0.0000, 0.0000, 0.0000



20.3446, 21.4041, 23.3091

Same Dimension

The Same Dimension uses a secret algorithm to generate beautiful new colors.



62.0706, 62.7535, 67.8736



86.3661, 86.6607, 93.5857



62.7925, 64.7781, 66.3239



13.1619, 13.0938, 14.1137



17.6203, 9.0492, 2.3806



1.1725, 0.5986, 0.3171

Inverse Universe

The Inverse Universe completely reimagines the original color for something new.



62.0706, 62.7535, 67.8736



86.3661, 86.6607, 93.5857



61.8636, 66.3005, 76.5555



13.1619, 13.0938, 14.1137



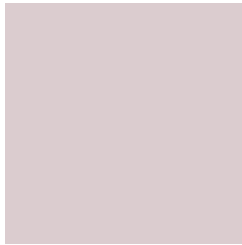
17.6203, 9.0492, 2.3806



1.1725, 0.5986, 0.3171

Previews

White Background



This preview shows how the XYZ color 62.0688, 62.7508, 67.8722 looks on a white background.

Color Contrast Check

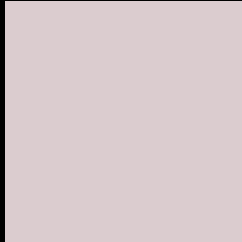
Large Text (above 18pt) WCAG AA × Fail

Any Text WCAG AA × Fail

Large Text (above 18pt) WCAG AAA × Fail

Any Text WCAG AAA × Fail

Black Background



This preview shows how the XYZ color 62.0688, 62.7508, 67.8722 looks on a black background.

Color Contrast Check

Large Text (above 18pt) WCAG AA ✓ Pass

Any Text WCAG AA ✓ Pass

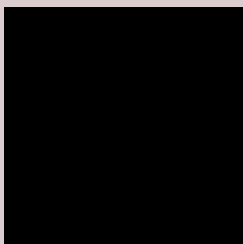
Large Text (above 18pt) WCAG AAA ✓ Pass

Any Text WCAG AAA ✓ Pass

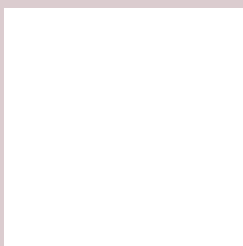
If you want to check with other color combinations, try the [Color Contrast Checker](#).

XYZ 62.0688, 62.7508, 67.8722

Background



This preview shows how black text looks on a background with the XYZ color 62.0688, 62.7508, 67.8722.



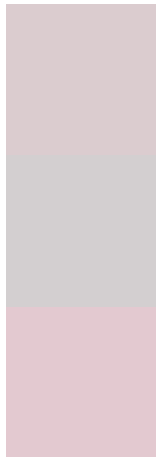
This preview shows how white text looks on a background with the XYZ color 62.0688, 62.7508,

67.8722.

Color Blindness Simulation

Color vision deficiency is a very complex topic, and I could not describe the different causes any better than Wikipedia does, so if you want to learn more, you should check out their [article about color blindness](#).

Dichromacy



Original Color

62.0688, 62.7508, 67.8722

Protanopia

60.5620, 63.0286, 68.6483

Deuteranopia

63.9504, 62.6582, 68.3982



Tritanopia

63.5942, 62.6752, 75.0754

Trichromacy



Original Color

62.0688, 62.7508, 67.8722

Protanomaly

61.1880, 62.9928, 68.6084

Deuteranomaly

63.2462, 62.6424, 68.4323

Tritanomaly

63.0087, 62.7826, 72.4157

Monochromacy



Original Color

62.0688, 62.7508, 67.8722

Achromatopsia

60.6036, 63.7597, 69.4343

Achromatomaly

61.1386, 63.3258, 68.6753

CSS Examples

Text

The CSS property to change the color of the text to XYZ 62.0688, 62.7508, 67.8722 is called "color". The color property can be set on classes, ids or directly on the HTML element.

This example shows how text in the color rgb(219, 204, 207) looks like.

```
.text, #text, p{  
    color:rgb(219, 204, 207)  
}
```

If you want to add a text shadow in that color use the text-shadow property, you can generate a text shadow directly with our [CSS Text Shadow Generator](#).

Here you see how black text with a 4 pixel rgb(219, 204, 207) colored shadow looks like.

```
.shadow{ text-shadow: 4px 4px 2px rgb(219, 204, 207) }
```

Border

The CSS property to change the border of an element to XYZ 62.0688, 62.7508, 67.8722 is called "border". The border property can be set on classes, ids or directly on the HTML element.

This example shows the color as border, it can be applied via the CSS property "border" or "border-color".

```
.border, #border, table{ border:4px solid rgb(219, 204, 207) }
```


If only the border color should be changed use the property `border-color`.

```
.border{ border-color:rgb(219, 204, 207) }
```

If you want to add a box shadow in that color use:

Here you see how a box with a 4 pixel `rgb(219, 204, 207)` colored shadow looks like.

```
.boxshadow{ -moz-box-shadow:4px 4px 4px  
4px rgb(219, 204, 207); -webkit-box-  
shadow:4px 4px 4px 4px rgb(219, 204, 207);  
box-shadow:4px 4px 4px 4px rgb(219, 204,  
207) }
```

Background

The CSS property to change the background color of an element to XYZ 62.0688, 62.7508, 67.8722 is called "background". The background property can be set on classes, ids or directly on the HTML element.

```
.background, #background, body{  
background: rgb(219, 204, 207) }
```

If only the background color should be changed can be used:

```
.background{ background-color: rgb(219,  
204, 207) }
```

This example shows the color as background, it is applied via the CSS property "background".

To optimize and compress your CSS code, you can use our [online CSS compressor and optimizer](#) based on csstidy. If you want to create a linear or radial gradient as background or border, check our [CSS Gradient Generator](#).

Hey! You found this booklet interesting? Support Converting Colors with the new Membership Option!

The pro membership hides all ads, plus gives you double the colors in the color bucket, and more awesome pro features!

[Learn more, Memberships starting at \\$2.50/m!](#)

**Follow me
on Twitter!**

@ConvertingColor