

Converting Colors

XYZ(62.0758, 60.6917, 66.8348)

Have a look what the booklet for
XYZ(62.0758, 60.6917, 66.8348)
contains.

XYZ(62.0751, 60.6917, 66.8355)	3
<i>Conversions</i>	4
<i>Details</i>	6
<i>Harmonies</i>	12
<i>Previews</i>	24
<i>Color Blindness Simulation</i>	28
<i>CSS Examples</i>	31

Color

**XYZ(62.0751, 60.6917,
66.8355)**

Conversions

Conversions Part 1

Format	Color
Hex	E0C6CE
RGB	224, 198, 206
RGB Percent	88%, 78%, 81%
CMY	0.1216, 0.2235, 0.1922
CMYK	0.00, 0.12, 0.08, 0.12
HSL	342°, 30%, 83%
HSV	342°, 12%, 88%
XYZ	62.0751, 60.6917, 66.8355
YIQ	206.6860, 12.9280, 8.0000

Conversions

Conversions Part 2

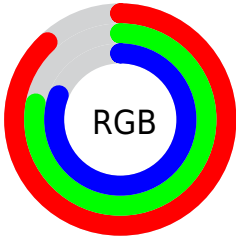
Format	Color
RYB	224, 198, 206
Decimal	14730958
CIELab	82.21, 10.48, -0.64
CIELCh	82, 10.496, 356.502
Yxy	60.6917, 0.3274, 0.3201
Android (android.graphics.Color)	4292921038 (0xFFE0C6CE)
YUV	206.6860, -0.3382, 15.1844
Hunter-Lab	77.9049, 5.8964, 3.6678

Details

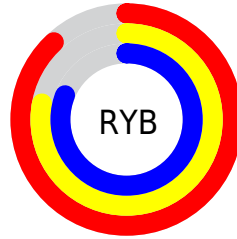
The XYZ color **62.0751, 60.6917, 66.8355** is a light color, and the websafe version is hex **CCCCCC**. A complement of this color would be **62.3413, 70.2764, 75.2480**, and the grayscale version is **59.1039, 62.1819, 67.7161**.

A 20% lighter version of the original color is **95.0500, 100.0000, 108.9000**, and **32.0029, 30.6485, 33.9348** is the 20% darker color. If you saturate the color by 10%, you get **55.5369, 50.4828, 55.8143**, and if you desaturate by 10%, it is **69.5599, 72.4947, 79.0911**.

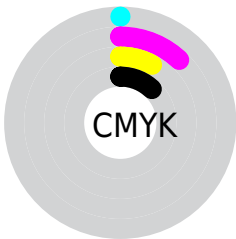
Distribution



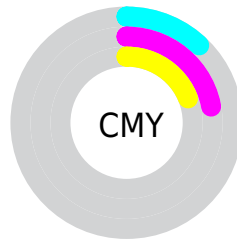
- Red (88%)
- Green (78%)
- Blue (81%)



- Red (88%)
- Yellow (78%)
- Blue (81%)



- Cyan (0%)
- Magenta (12%)
- Yellow (8%)
- Black (12%)



- Cyan (12%)
- Magenta (22%)
- Yellow (19%)

Brightness & Saturation Gradients

These gradients show how the XYZ color 62.0751, 60.6917, 66.8355 changes by changing the brightness by 10 percent. The first figure shows a shift by +10% for each color and the second figure -10%.

Similar to the brightness gradients but the following saturation gradients show a change of the XYZ color 62.0751, 60.6917, 66.8355 by changing the saturation by 10% instead.

62.0751, 60.6917,
66.8355

62.0751, 60.6917,
66.8355

421.9182,
427.1427, 467.8445

45.3492, 43.9764,
48.4902

106.9234,
105.8324, 116.3231

31.9350, 30.6520,
33.8525

135.7765,
135.0266, 148.3024

21.4672, 20.3340,
22.5039

169.4027,
169.1493, 185.6636

13.5803, 12.6380,
14.0258

208.1675,
208.5847, 228.8250

7.9091, 7.1798,
7.9996

252.4360,
253.7174, 278.2053

4.0882, 3.5748,
4.0069

302.5737,

1.7521, 1.4387,

304.9317, 334.2229

1.6292

358.9460,
362.6120, 397.2965

■ 0.4886, 0.2450,
0.3115

■ 0.0000, 0.0000,
0.0000

■ 62.0751, 60.6917,
66.8355

■ 62.0751, 60.6917,
66.8355

■ 55.5369, 50.4828,
55.8143

■ 69.5599, 72.4947,
79.0911

■ 49.9016, 41.7916,
45.9843

■ 78.0224, 85.9480,
92.6146

■ 45.1299, 34.5473,
37.3055

■ 84.1558, 94.4295,
106.3288

■ 41.1772, 28.6706,
29.7338

■ 84.5508, 94.5874,
108.4086

■ 37.9950, 24.0742,
23.2224

■ 35.5293, 20.6608,
17.7208

■ 33.7186, 18.3187,
13.1737

■ 32.4903, 16.9146,
9.5194

■ 31.8119, 16.2759,
7.0790

Harmonies

Analogous

The Analogous color harmony consists of three colors that are next to each other on the color wheel.



61.3381, 60.6917, 73.0994



62.0751, 60.6917, 66.8355



61.6112, 60.6917, 60.7499

Triad

The Triadic color harmony groups three colors that are evenly spaced from another and form a triangle on the color wheel.



62.0751, 60.6917, 66.8355



55.7921, 60.6917, 55.6849



55.3499, 60.6917, 76.8687

Complementary

The Complementary color scheme is a pair of colors which are on the opposite of each other on the color wheel.



62.0751, 60.6917, 66.8355



62.3413, 70.2764, 75.2480

Split Complementary

Split-complementary colors differ from the complementary color scheme. The scheme consists of three colors, the original color and two neighbors of the complement color.



53.9305, 60.6917, 71.7193



62.0751, 60.6917, 66.8355



54.1811, 60.6917, 59.5305

Square

The Square scheme is like the rectangle color scheme, but the four colors are evenly spaced on the color wheel.



62.0751, 60.6917, 66.8355



57.9478, 60.6917, 54.5610



53.5081, 60.6917, 65.3361



57.4243, 60.6917, 79.1225

Rectangle

The Rectangle color scheme consists of four colors that form a rectangle on the color wheel.



62.0751, 60.6917, 66.8355



60.6897, 60.6917, 57.5640



53.5081, 60.6917, 65.3361



54.7824, 60.6917, 75.4034

Sweetspot

The Sweet Spot groups the original color and five complimentary colors.



62.0768, 60.6944, 66.8368



91.8167, 94.8793, 103.6728



61.9007, 60.3363, 78.9052



19.4719, 20.0225, 21.8969



0.0000, 0.0000, 0.0000



20.3446, 21.4041, 23.3091

Same Dimension

The Same Dimension uses a secret algorithm to generate beautiful new colors.



62.0768, 60.6944, 66.8368



80.9723, 77.8087, 85.8209



62.2364, 62.5288, 62.2184



13.8800, 13.7696, 15.1381



18.5619, 9.4918, 4.3587



1.3258, 0.6736, 0.5085

Inverse Universe

The Inverse Universe completely reimagines the original color for something new.



62.0768, 60.6944, 66.8368



80.9723, 77.8087, 85.8209



62.1377, 68.1741, 80.4056



13.8800, 13.7696, 15.1381



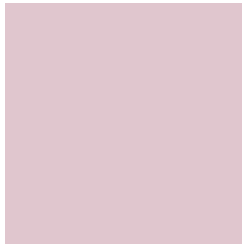
18.5619, 9.4918, 4.3587



1.3258, 0.6736, 0.5085

Previews

White Background



This preview shows how the XYZ color 62.0751, 60.6917, 66.8355 looks on a white background.

Color Contrast Check

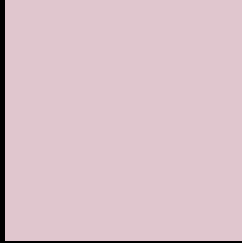
Large Text (above 18pt) WCAG AA × Fail

Any Text WCAG AA × Fail

Large Text (above 18pt) WCAG AAA × Fail

Any Text WCAG AAA × Fail

Black Background



This preview shows how the XYZ color 62.0751, 60.6917, 66.8355 looks on a black background.

Color Contrast Check

Large Text (above 18pt) WCAG AA ✓ Pass

Any Text WCAG AA ✓ Pass

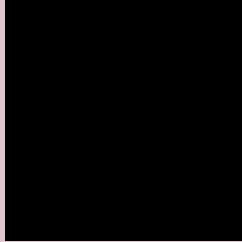
Large Text (above 18pt) WCAG AAA ✓ Pass

Any Text WCAG AAA ✓ Pass

If you want to check with other color combinations, try the [Color Contrast Checker](#).

XYZ 62.0751, 60.6917, 66.8355

Background



This preview shows how black text looks on a background with the XYZ color 62.0751, 60.6917, 66.8355.



This preview shows how white text looks on a background with the XYZ color 62.0751, 60.6917,

Color Blindness Simulation

Color vision deficiency is a very complex topic, and I could not describe the different causes any better than Wikipedia does, so if you want to learn more, you should check out their [article about color blindness](#).

Dichromacy



Original Color

62.0751, 60.6917, 66.8355

Protanopia

58.8336, 61.0546, 69.0054

Deuteranopia

62.0751, 60.6917, 66.8355



Tritanopia

62.9013, 60.6935, 70.6871

Trichromacy



Original Color

62.0751, 60.6917, 66.8355

Protanomaly

59.9463, 60.9413, 68.2778

Deuteranomaly

62.0751, 60.6917, 66.8355

Tritanomaly

62.6504, 60.5932, 69.3664

Monochromacy



Original Color

62.0751, 60.6917, 66.8355

Achromatopsia

59.3074, 62.3960, 67.9493

Achromatomaly

60.2959, 61.8369, 67.7893

CSS Examples

Text

The CSS property to change the color of the text to XYZ 62.0751, 60.6917, 66.8355 is called "color". The color property can be set on classes, ids or directly on the HTML element.

This example shows how text in the color rgb(224, 198, 206) looks like.

```
.text, #text, p{  
    color:rgb(224, 198, 206)  
}
```

If you want to add a text shadow in that color use the text-shadow property, you can generate a text shadow directly with our [CSS Text Shadow Generator](#).

Here you see how black text with a 4 pixel rgb(224, 198, 206) colored shadow looks like.

```
.shadow{ text-shadow: 4px 4px 2px rgb(224, 198, 206) }
```

Border

The CSS property to change the border of an element to XYZ 62.0751, 60.6917, 66.8355 is called "border". The border property can be set on classes, ids or directly on the HTML element.

This example shows the color as border, it can be applied via the CSS property "border" or "border-color".

```
.border, #border, table{ border:4px solid rgb(224, 198, 206) }
```


If only the border color should be changed use the property `border-color`.

```
.border{ border-color:rgb(224, 198, 206) }
```

If you want to add a box shadow in that color use:

Here you see how a box with a 4 pixel `rgb(224, 198, 206)` colored shadow looks like.

```
.boxshadow{ -moz-box-shadow:4px 4px 4px  
4px rgb(224, 198, 206); -webkit-box-  
shadow:4px 4px 4px 4px rgb(224, 198, 206);  
box-shadow:4px 4px 4px 4px rgb(224, 198,  
206) }
```

Background

The CSS property to change the background color of an element to XYZ 62.0751, 60.6917, 66.8355 is called "background". The background property can be set on classes, ids or directly on the HTML element.

```
.background, #background, body{  
background: rgb(224, 198, 206) }
```

If only the background color should be changed can be used:

```
.background{ background-color: rgb(224,  
198, 206) }
```

This example shows the color as background, it is applied via the CSS property "background".

To optimize and compress your CSS code, you can use our [online CSS compressor and optimizer](#) based on csstidy. If you want to create a linear or radial gradient as background or border, check our [CSS Gradient Generator](#).

Hey! You found this booklet interesting? Support Converting Colors with the new Membership Option!

The pro membership hides all ads, plus gives you double the colors in the color bucket, and more awesome pro features!

[Learn more, Memberships starting at \\$2.50/m!](#)

**Follow me
on Twitter!**

@ConvertingColor