

Converting Colors

XYZ(62.1060, 63.7076, 57.7387)

Have a look what the booklet for
XYZ(62.1060, 63.7076, 57.7387)
contains.

XYZ(62.1060, 63.7076, 57.7387)	3
<i>Conversions</i>	4
<i>Details</i>	6
<i>Harmonies</i>	12
<i>Previews</i>	24
<i>Color Blindness Simulation</i>	28
<i>CSS Examples</i>	31

Color

**XYZ(62.1060, 63.7076,
57.7387)**

Conversions

Conversions Part 1

Format	Color
Hex	E0CEBE
RGB	224, 206, 190
RGB Percent	88%, 81%, 75%
CMY	0.1216, 0.1921, 0.2549
CMYK	0.00, 0.08, 0.15, 0.12
HSL	28°, 35%, 81%
HSV	28°, 15%, 88%
XYZ	62.1060, 63.7076, 57.7387
YIQ	209.5580, 15.8640, -1.1600

Conversions

Conversions Part 2

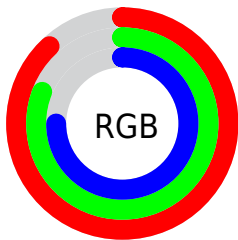
Format	Color
R _Y B	224, 220, 190
Decimal	14732990
CIE Lab	83.81, 3.65, 10.21
CIE LCh	84, 10.842, 70.333
Yxy	63.7076, 0.3384, 0.3471
Android (android.graphics.Color)	4292923070 (0xFFE0CEBE)
YUV	209.5580, -9.6421, 12.6656
Hunter-Lab	79.8170, -0.7882, 12.9822

Details

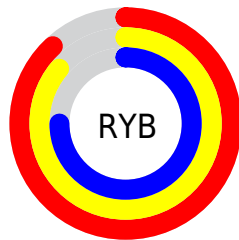
The XYZ color **62.1060, 63.7076, 57.7387** is a light color, and the websafe version is hex **CCCCCC**. A complement of this color would be **57.2453, 61.4394, 79.3633**, and the grayscale version is **61.0242, 64.2022, 69.9162**.

A 20% lighter version of the original color is **93.6346, 99.4338, 101.4464**, and **32.1058, 32.6976, 28.2860** is the 20% darker color. If you saturate the color by 10%, you get **57.0966, 57.3099, 44.9041**, and if you desaturate by 10%, it is **67.7106, 70.6922, 72.6296**.

Distribution



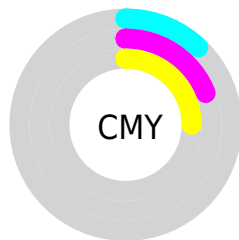
- Red (88%)
- Green (81%)
- Blue (75%)



- Red (88%)
- Yellow (86%)
- Blue (75%)



- Cyan (0%)
- Magenta (8%)
- Yellow (15%)
- Black (12%)



- Cyan (12%)
- Magenta (19%)
- Yellow (25%)

Brightness & Saturation Gradients

These gradients show how the XYZ color 62.1060, 63.7076, 57.7387 changes by changing the brightness by 10 percent. The first figure shows a shift by +10% for each color and the second figure -10%.

Similar to the brightness gradients but the following saturation gradients show a change of the XYZ color 62.1060, 63.7076, 57.7387 by changing the saturation by 10% instead.

■ 62.1060, 63.7076,
57.7387

■ 62.1060, 63.7076,
57.7387

422.0290,
438.1330, 433.7826

■ 45.3743, 46.4139,
41.1853

■ 106.9678,
110.1897, 103.0533

■ 31.9549, 32.5726,
28.1431

135.8286,
140.1469, 132.6515

■ 21.4824, 21.7992,
18.1936

169.4631,
175.0941, 167.4351

■ 13.5915, 13.7094,
10.9182

208.2367,
215.4156, 207.8226

■ 7.9169, 7.9188,
5.8984

252.5147,
261.4958, 254.2326

■ 4.0932, 4.0431,
2.7156

302.6626,

■ 1.7550, 1.6977,

313.7192, 307.0836

0.9513

359.0455,
372.4701, 366.7941

■ 0.4903, 0.4222,
0.0000

■ 0.0000, 0.0000,
0.0000

■ 62.1060, 63.7076,
57.7387

■ 62.1060, 63.7076,
57.7387

■ 57.0966, 57.3099,
44.9041

■ 67.7106, 70.6922,
72.6296

■ 52.6552, 51.4742,
34.0299

■ 73.9257, 78.2706,
89.6586

■ 48.7603, 46.1863,
25.0187

■ 80.4160, 86.3180,
107.0304

■ 45.3867, 41.4279,
17.7630

■ 84.0517, 93.5894,
108.2423

■ 42.5069, 37.1797,
12.1440

■ 84.5507, 94.5874,
108.4086

■ 40.0905, 33.4206,
8.0283

■ 38.1026, 30.1276,
5.2607

■ 36.5016, 27.2744,
3.6512

■ 35.8372, 26.0406,
3.1375

Harmonies

Analogous

The Analogous color harmony consists of three colors that are next to each other on the color wheel.



64.1094, 63.7076, 61.2224



62.1060, 63.7076, 57.7387



59.7347, 63.7076, 57.2514

Triad

The Triadic color harmony groups three colors that are evenly spaced from another and form a triangle on the color wheel.



62.1060, 63.7076, 57.7387



56.1592, 63.7076, 71.7451



63.5637, 63.7076, 79.8488

Complementary

The Complementary color scheme is a pair of colors which are on the opposite of each other on the color wheel.



62.1060, 63.7076, 57.7387



57.2453, 61.4394, 79.3633

Split Complementary

Split-complementary colors differ from the complementary color scheme. The scheme consists of three colors, the original color and two neighbors of the complement color.



61.3770, 63.7076, 83.0809



62.1060, 63.7076, 57.7387



57.1290, 63.7076, 78.2032

Square

The Square scheme is like the rectangle color scheme, but the four colors are evenly spaced on the color wheel.



62.1060, 63.7076, 57.7387



56.3428, 63.7076, 65.0471



59.0245, 63.7076, 82.4597



64.9661, 63.7076, 73.8735

Rectangle

The Rectangle color scheme consists of four colors that form a rectangle on the color wheel.



62.1060, 63.7076, 57.7387



58.2695, 63.7076, 58.6549



59.0245, 63.7076, 82.4597



62.8937, 63.7076, 81.3093

Sweetspot

The Sweet Spot groups the original color and five complimentary colors.



62.1077, 63.7104, 57.7401



90.9494, 94.9755, 97.7400



60.5562, 57.2357, 67.6172



19.3472, 20.1810, 20.5972



0.0000, 0.0000, 0.0000



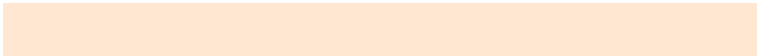
20.3446, 21.4041, 23.3091

Same Dimension

The Same Dimension uses a secret algorithm to generate beautiful new colors.



62.1077, 63.7104, 57.7401



81.2547, 82.8557, 72.0967



66.3873, 72.2696, 59.1666



14.2366, 14.7591, 14.4052



20.9729, 15.3837, 1.8640



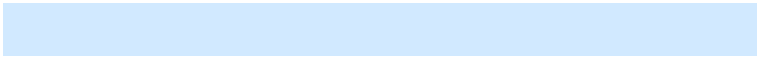
1.5428, 1.2445, 0.1589

Inverse Universe

The Inverse Universe completely reimagines the original color for something new.



57.2453, 61.4394, 79.3633



73.6234, 79.2911, 106.0321



53.3505, 53.6497, 78.0650



13.5496, 14.4383, 17.4604



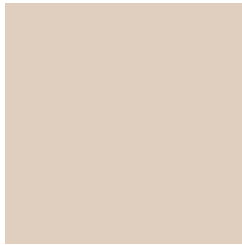
11.7571, 10.9837, 42.5488



0.9044, 0.9402, 2.9791

Previews

White Background



This preview shows how the XYZ color 62.1060, 63.7076, 57.7387 looks on a white background.

Color Contrast Check

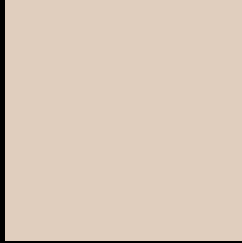
Large Text (above 18pt) WCAG AA × Fail

Any Text WCAG AA × Fail

Large Text (above 18pt) WCAG AAA × Fail

Any Text WCAG AAA × Fail

Black Background



This preview shows how the XYZ color 62.1060, 63.7076, 57.7387 looks on a black background.

Color Contrast Check

Large Text (above 18pt) WCAG AA ✓ Pass

Any Text WCAG AA ✓ Pass

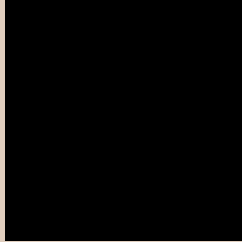
Large Text (above 18pt) WCAG AAA ✓ Pass

Any Text WCAG AAA ✓ Pass

If you want to check with other color combinations, try the [Color Contrast Checker](#).

XYZ 62.1060, 63.7076, 57.7387

Background



This preview shows how black text looks on a background with the XYZ color 62.1060, 63.7076, 57.7387.



This preview shows how white text looks on a background with the XYZ color 62.1060, 63.7076,

57.7387.

Color Blindness Simulation

Color vision deficiency is a very complex topic, and I could not describe the different causes any better than Wikipedia does, so if you want to learn more, you should check out their [article about color blindness](#).

Dichromacy



Original Color

62.1060, 63.7076, 57.7387

Protanopia

60.5751, 63.6251, 58.3784

Deuteranopia

65.1166, 63.8355, 58.1797



Tritanopia

65.7703, 63.7970, 75.1772

Trichromacy



Original Color

62.1060, 63.7076, 57.7387

Protanomaly

61.2320, 63.6029, 58.3395

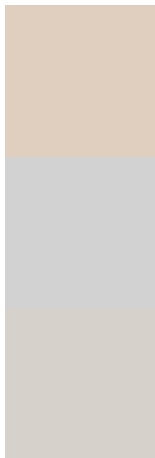
Deuteranomaly

64.0386, 63.6293, 58.1967

Tritanomaly

64.4197, 63.5968, 68.5546

Monochromacy



Original Color

62.1060, 63.7076, 57.7387

Achromatopsia

61.2578, 64.4480, 70.1838

Achromatomaly

61.6043, 64.3598, 65.6757

CSS Examples

Text

The CSS property to change the color of the text to XYZ 62.1060, 63.7076, 57.7387 is called "color". The color property can be set on classes, ids or directly on the HTML element.

This example shows how text in the color rgb(224, 206, 190) looks like.

```
.text, #text, p{  
    color:rgb(224, 206, 190)  
}
```

If you want to add a text shadow in that color use the text-shadow property, you can generate a text shadow directly with our [CSS Text Shadow Generator](#).

Here you see how black text with a 4 pixel rgb(224, 206, 190) colored shadow looks like.

```
.shadow{ text-shadow: 4px 4px 2px rgb(224, 206, 190) }
```

Border

The CSS property to change the border of an element to XYZ 62.1060, 63.7076, 57.7387 is called "border". The border property can be set on classes, ids or directly on the HTML element.

This example shows the color as border, it can be applied via the CSS property "border" or "border-color".

```
.border, #border, table{ border:4px solid rgb(224, 206, 190) }
```


If only the border color should be changed use the property `border-color`.

```
.border{ border-color:rgb(224, 206, 190) }
```

If you want to add a box shadow in that color use:

Here you see how a box with a 4 pixel `rgb(224, 206, 190)` colored shadow looks like.

```
.boxshadow{ -moz-box-shadow:4px 4px 4px  
4px rgb(224, 206, 190); -webkit-box-  
shadow:4px 4px 4px 4px rgb(224, 206, 190);  
box-shadow:4px 4px 4px 4px rgb(224, 206,  
190) }
```

Background

The CSS property to change the background color of an element to XYZ 62.1060, 63.7076, 57.7387 is called "background". The background property can be set on classes, ids or directly on the HTML element.

```
.background, #background, body{  
background: rgb(224, 206, 190) }
```

If only the background color should be changed can be used:

```
.background{ background-color: rgb(224,  
206, 190) }
```

This example shows the color as background, it is applied via the CSS property "background".

To optimize and compress your CSS code, you can use our [online CSS compressor and optimizer](#) based on csstidy. If you want to create a linear or radial gradient as background or border, check our [CSS Gradient Generator](#).

Hey! You found this booklet interesting? Support Converting Colors with the new Membership Option!

The pro membership hides all ads, plus gives you double the colors in the color bucket, and more awesome pro features!

[Learn more, Memberships starting at \\$2.50/m!](#)

**Follow me
on Twitter!**

@ConvertingColor