

Converting Colors

XYZ(62.1092, 61.2431, 61.9874)

Have a look what the booklet for
XYZ(62.1092, 61.2431, 61.9874)
contains.

XYZ(61.9805, 61.0928, 61.9514)	3
<i>Conversions</i>	4
<i>Details</i>	6
<i>Harmonies</i>	12
<i>Previews</i>	24
<i>Color Blindness Simulation</i>	28
<i>CSS Examples</i>	31

Color

**XYZ(61.9805, 61.0928,
61.9514)**

Conversions

Conversions Part 1

Format	Color
Hex	E2C7C6
RGB	226, 199, 198
RGB Percent	89%, 78%, 78%
CMY	0.1137, 0.2196, 0.2235
CMYK	0.00, 0.12, 0.12, 0.11
HSL	2°, 33%, 83%
HSV	2°, 12%, 89%
XYZ	61.9805, 61.0928, 61.9514
YIQ	206.9590, 16.4130, 5.4130

Conversions

Conversions Part 2

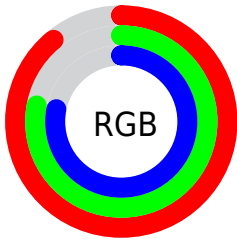
Format	Color
R _Y B	226, 199, 198
Decimal	14862278
CIE Lab	82.43, 9.33, 3.98
CIE LCh	82, 10.138, 23.099
Yxy	61.0928, 0.3350, 0.3302
Android (android.graphics.Color)	4293052358 (0xFFE2C7C6)
YUV	206.9590, -4.4168, 16.6990
Hunter-Lab	78.1619, 4.7629, 7.7198

Details

The XYZ color **61.9805, 61.0928, 61.9514** is a light color, and the websafe version is hex **FFCCCC**. A complement of this color would be **63.9410, 71.3458, 82.3533**, and the grayscale version is **59.3033, 62.3917, 67.9446**.

A 20% lighter version of the original color is **95.0500, 100.0000, 108.9000**, and **31.7370, 30.8105, 30.6598** is the 20% darker color. If you saturate the color by 10%, you get **54.9065, 50.8094, 47.6777**, and if you desaturate by 10%, it is **70.1648, 72.9729, 78.5156**.

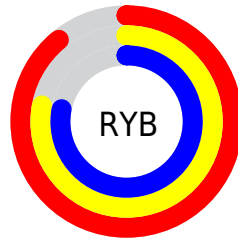
Distribution



Red (89%)

Green (78%)

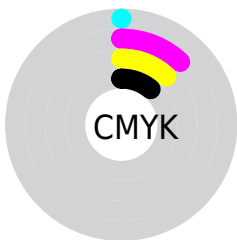
Blue (78%)



Red (89%)

Yellow (78%)

Blue (78%)

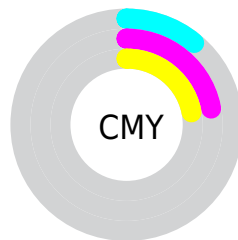


Cyan (0%)

Magenta (12%)

Yellow (12%)

Black (11%)



Cyan (11%)

Magenta (22%)

Yellow (22%)

Brightness & Saturation Gradients

These gradients show how the XYZ color 61.9805, 61.0928, 61.9514 changes by changing the brightness by 10 percent. The first figure shows a shift by +10% for each color and the second figure -10%.

Similar to the brightness gradients but the following saturation gradients show a change of the XYZ color 61.9805, 61.0928, 61.9514 by changing the saturation by 10% instead.

61.9805, 61.0928,
61.9514

61.9805, 61.0928,
61.9514

421.5786,
428.6142, 449.7565

45.2725, 44.3001,
44.5579

106.7874,
106.4133, 109.2262

31.8743, 30.9065,
30.7689

135.6171,
135.7098, 139.9446

21.4206, 20.5276,
20.1660

169.2180,
169.9431, 175.9417

13.5460, 12.7792,
12.3305

207.9555,
209.4975, 217.6360

7.8852, 7.2767,
6.8439

252.1949,
254.7574, 265.4461

4.0727, 3.6357,
3.2877

302.3017,

1.7434, 1.4719,

306.1072, 319.7905

1.2433

358.6412,
363.9314, 381.0878

■ 0.4832, 0.2689,
0.0147

■ 0.0000, 0.0000,
0.0000

■ 61.9805, 61.0928,
61.9514

■ 61.9805, 61.0928,
61.9514

■ 54.9065, 50.8094,
47.6777

■ 70.1648, 72.9729,
78.5156

■ 48.8901, 42.0470,
35.5901

■ 79.4989, 86.5051,
97.4608

■ 43.8820, 34.7359,
25.5818

■ 85.1743, 94.9089,
108.4378

■ 39.8272, 28.7977,
17.5356

■ 36.6650, 24.1467,
11.3228

■ 34.3282, 20.6878,
6.7991

■ 32.7397, 18.3123,
3.7988

■ 31.8081, 16.8920,
2.1226

■ 31.4523, 16.3448,
1.4971

Harmonies

Analogous

The Analogous color harmony consists of three colors that are next to each other on the color wheel.



62.2981, 61.0928, 67.9623



61.9805, 61.0928, 61.9514



60.6022, 61.0928, 57.4346

Triad

The Triadic color harmony groups three colors that are evenly spaced from another and form a triangle on the color wheel.



61.9805, 61.0928, 61.9514



54.8014, 61.0928, 59.6154



57.5682, 61.0928, 79.0704

Complementary

The Complementary color scheme is a pair of colors which are on the opposite of each other on the color wheel.



61.9805, 61.0928, 61.9514



63.9410, 71.3458, 82.3533

Split Complementary

Split-complementary colors differ from the complementary color scheme. The scheme consists of three colors, the original color and two neighbors of the complement color.



55.6032, 61.0928, 76.5155



61.9805, 61.0928, 61.9514



54.0317, 61.0928, 65.0976

Square

The Square scheme is like the rectangle color scheme, but the four colors are evenly spaced on the color wheel.



61.9805, 61.0928, 61.9514



56.4491, 61.0928, 56.1456



54.3216, 61.0928, 71.3072



59.7153, 61.0928, 78.0988

Rectangle

The Rectangle color scheme consists of four colors that form a rectangle on the color wheel.



61.9805, 61.0928, 61.9514



59.2854, 61.0928, 55.7528



54.3216, 61.0928, 71.3072



56.8651, 61.0928, 78.5905

Sweetspot

The Sweet Spot groups the original color and five complimentary colors.



61.9822, 61.0955, 61.9527



90.3935, 93.2455, 99.4601



65.1586, 61.9976, 79.8151



19.1663, 19.6949, 20.9207



0.0000, 0.0000, 0.0000



20.3446, 21.4041, 23.3091

Same Dimension

The Same Dimension uses a secret algorithm to generate beautiful new colors.



61.9822, 61.0955, 61.9527



78.8348, 76.4627, 76.0790



65.3353, 67.8017, 63.0704



13.7464, 13.7789, 14.2419



17.9617, 9.3612, 0.8602



1.2591, 0.6771, 0.0643

Inverse Universe

The Inverse Universe completely reimagines the original color for something new.



63.9410, 71.3458, 82.3533



81.9150, 92.5814, 108.1604



60.3278, 64.1192, 81.1488



14.0722, 15.4836, 17.6346



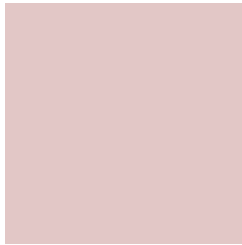
22.1390, 31.7475, 46.0094



1.5479, 2.2273, 3.1936

Previews

White Background



This preview shows how the XYZ color 61.9805, 61.0928, 61.9514 looks on a white background.

Color Contrast Check

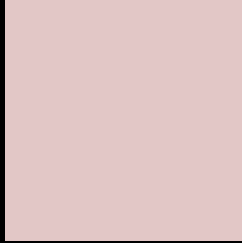
Large Text (above 18pt) WCAG AA × Fail

Any Text WCAG AA × Fail

Large Text (above 18pt) WCAG AAA × Fail

Any Text WCAG AAA × Fail

Black Background



This preview shows how the XYZ color 61.9805, 61.0928, 61.9514 looks on a black background.

Color Contrast Check

Large Text (above 18pt) WCAG AA ✓ Pass

Any Text WCAG AA ✓ Pass

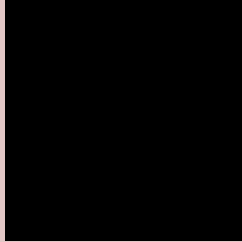
Large Text (above 18pt) WCAG AAA ✓ Pass

Any Text WCAG AAA ✓ Pass

If you want to check with other color combinations, try the [Color Contrast Checker](#).

XYZ 61.9805, 61.0928, 61.9514

Background



This preview shows how black text looks on a background with the XYZ color 61.9805, 61.0928, 61.9514.



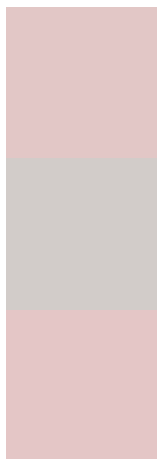
This preview shows how white text looks on a background with the XYZ color 61.9805, 61.0928,

61.9514.

Color Blindness Simulation

Color vision deficiency is a very complex topic, and I could not describe the different causes any better than Wikipedia does, so if you want to learn more, you should check out their [article about color blindness](#).

Dichromacy



Original Color

61.9805, 61.0928, 61.9514

Protanopia

58.7138, 61.1044, 63.9581

Deuteranopia

62.3820, 60.9594, 61.9045



Tritanopia

63.8448, 61.1800, 70.7313

Trichromacy



Original Color

61.9805, 61.0928, 61.9514

Protanomaly

59.8648, 61.0101, 63.2645

Deuteranomaly

62.0657, 60.7963, 61.8897

Tritanomaly

63.1351, 61.2241, 67.5213

Monochromacy



Original Color

61.9805, 61.0928, 61.9514

Achromatopsia

59.3074, 62.3960, 67.9493

Achromatomaly

60.2235, 61.8415, 65.8892

CSS Examples

Text

The CSS property to change the color of the text to XYZ 61.9805, 61.0928, 61.9514 is called "color". The color property can be set on classes, ids or directly on the HTML element.

This example shows how text in the color `rgb(226, 199, 198)` looks like.

```
.text, #text, p{  
    color:rgb(226, 199, 198)  
}
```

If you want to add a text shadow in that color use the text-shadow property, you can generate a text shadow directly with our [CSS Text Shadow Generator](#).

Here you see how black text with a 4 pixel rgb(226, 199, 198) colored shadow looks like.

```
.shadow{ text-shadow: 4px 4px 2px rgb(226, 199, 198) }
```

Border

The CSS property to change the border of an element to XYZ 61.9805, 61.0928, 61.9514 is called "border". The border property can be set on classes, ids or directly on the HTML element.

This example shows the color as border, it can be applied via the CSS property "border" or "border-color".

```
.border, #border, table{ border:4px solid rgb(226, 199, 198) }
```


If only the border color should be changed use the property `border-color`.

```
.border{ border-color:rgb(226, 199, 198) }
```

If you want to add a box shadow in that color use:

Here you see how a box with a 4 pixel `rgb(226, 199, 198)` colored shadow looks like.

```
.boxshadow{ -moz-box-shadow:4px 4px 4px  
4px rgb(226, 199, 198); -webkit-box-  
shadow:4px 4px 4px 4px rgb(226, 199, 198);  
box-shadow:4px 4px 4px 4px rgb(226, 199,  
198) }
```

Background

The CSS property to change the background color of an element to XYZ 61.9805, 61.0928, 61.9514 is called "background". The background property can be set on classes, ids or directly on the HTML element.

```
.background, #background, body{  
background: rgb(226, 199, 198) }
```

If only the background color should be changed can be used:

```
.background{ background-color: rgb(226,  
199, 198) }
```

This example shows the color as background, it is applied via the CSS property "background".

To optimize and compress your CSS code, you can use our [online CSS compressor and optimizer](#) based on csstidy. If you want to create a linear or radial gradient as background or border, check our [CSS Gradient Generator](#).

Hey! You found this booklet interesting? Support Converting Colors with the new Membership Option!

The pro membership hides all ads, plus gives you double the colors in the color bucket, and more awesome pro features!

[Learn more, Memberships starting at \\$2.50/m!](#)

**Follow me
on Twitter!**

@ConvertingColor