

Converting Colors

XYZ(62.1376, 61.1299, 62.5178)

Have a look what the booklet for
XYZ(62.1376, 61.1299, 62.5178)
contains.

XYZ(62.0963, 61.1391, 62.5610)	3
<i>Conversions</i>	4
<i>Details</i>	6
<i>Harmonies</i>	12
<i>Previews</i>	24
<i>Color Blindness Simulation</i>	28
<i>CSS Examples</i>	31

Color

**XYZ(62.0963, 61.1391,
62.5610)**

Conversions

Conversions Part 1

Format	Color
Hex	E2C7C7
RGB	226, 199, 199
RGB Percent	89%, 78%, 78%
CMY	0.1137, 0.2196, 0.2196
CMYK	0.00, 0.12, 0.12, 0.11
HSL	0°, 32%, 83%
HSV	0°, 12%, 89%
XYZ	62.0963, 61.1391, 62.5610
YIQ	207.0730, 16.0920, 5.7240

Conversions

Conversions Part 2

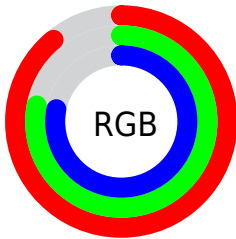
Format	Color
R _Y B	226, 199, 199
Decimal	14862279
CIE Lab	82.45, 9.49, 3.48
CIE LCh	82, 10.105, 20.134
Yxy	61.1391, 0.3342, 0.3291
Android (android.graphics.Color)	4293052359 (0xFFE2C7C7)
YUV	207.0730, -3.9800, 16.5990
Hunter-Lab	78.1915, 4.9219, 7.2961

Details

The XYZ color **62.0963, 61.1391, 62.5610** is a light color, and the websafe version is hex **FFCCCC**. A complement of this color would be **64.4768, 72.0246, 82.4562**, and the grayscale version is **59.3742, 62.4663, 68.0258**.

A 20% lighter version of the original color is **95.0500, 100.0000, 108.9000**, and **31.8138, 30.8412, 31.0642** is the 20% darker color. If you saturate the color by 10%, you get **54.8462, 50.5305, 48.1454**, and if you desaturate by 10%, it is **70.5116, 73.4530, 79.2890**.

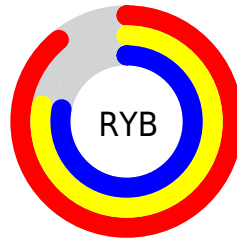
Distribution



Red (89%)

Green (78%)

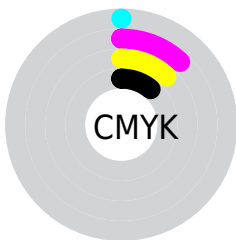
Blue (78%)



Red (89%)

Yellow (78%)

Blue (78%)

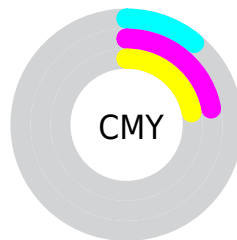


Cyan (0%)

Magenta (12%)

Yellow (12%)

Black (11%)



Cyan (11%)

Magenta (22%)

Yellow (22%)

Brightness & Saturation Gradients

These gradients show how the XYZ color 62.0963, 61.1391, 62.5610 changes by changing the brightness by 10 percent. The first figure shows a shift by +10% for each color and the second figure -10%.

Similar to the brightness gradients but the following saturation gradients show a change of the XYZ color 62.0963, 61.1391, 62.5610 by changing the saturation by 10% instead.

62.0963, 61.1391,
62.5610

62.0963, 61.1391,
62.5610

421.9942,
428.7838, 452.0385

45.3664, 44.3374,
45.0474

106.9539,
106.4803, 110.1154

31.9486, 30.9359,
31.1516

135.8122,
135.7887, 140.9933

21.4776, 20.5500,
20.4549

169.4441,
170.0347, 177.1630

13.5880, 12.7955,
12.5388

208.2149,
209.6028, 219.0432

7.9145, 7.2879,
6.9847

252.4900,
254.8774, 267.0522

4.0916, 3.6428,
3.3743

302.6347,

1.7541, 1.4758,

306.2428, 321.6088

1.2888

359.0143,
364.0835, 383.1314

■ 0.4898, 0.2716,
0.0526

■ 0.0000, 0.0000,
0.0000

■ 62.0963, 61.1391,
62.5610

■ 62.0963, 61.1391,
62.5610

■ 54.8462, 50.5305,
48.1454

■ 70.5116, 73.4530,
79.2890

■ 48.7051, 41.5445,
35.9369

■ 80.1347, 87.5340,
98.4207

■ 43.6200, 34.1035,
25.8278

■ 85.1744, 94.9089,
108.4378

■ 39.5312, 28.1204,
17.6999

■ 36.3736, 23.4998,
11.4231

■ 34.0739, 20.1345,
6.8520

■ 32.5481, 17.9016,
3.8195

■ 31.6953, 16.6534,
2.1248

■ 31.3648, 16.1697,
1.4679

Harmonies

Analogous

The Analogous color harmony consists of three colors that are next to each other on the color wheel.



62.2975, 61.1391, 68.6281



62.0963, 61.1391, 62.5610



60.8127, 61.1391, 57.8553

Triad

The Triadic color harmony groups three colors that are evenly spaced from another and form a triangle on the color wheel.



62.0963, 61.1391, 62.5610



54.9825, 61.1391, 59.2364



57.4025, 61.1391, 78.9837

Complementary

The Complementary color scheme is a pair of colors which are on the opposite of each other on the color wheel.



62.0963, 61.1391, 62.5610



64.4768, 72.0246, 82.4562

Split Complementary

Split-complementary colors differ from the complementary color scheme. The scheme consists of three colors, the original color and two neighbors of the complement color.



55.4903, 61.1391, 76.1188



62.0963, 61.1391, 62.5610



54.1162, 61.1391, 64.5536

Square

The Square scheme is like the rectangle color scheme, but the four colors are evenly spaced on the color wheel.



62.0963, 61.1391, 62.5610



56.6936, 61.1391, 56.0199



54.2997, 61.1391, 70.7469



59.5516, 61.1391, 78.3681

Rectangle

The Rectangle color scheme consists of four colors that form a rectangle on the color wheel.



62.0963, 61.1391, 62.5610



59.5330, 61.1391, 56.0029



54.2997, 61.1391, 70.7469



56.7115, 61.1391, 78.3893

Sweetspot

The Sweet Spot groups the original color and five complimentary colors.



62.0980, 61.1418, 62.5623



90.2833, 93.0251, 99.4234



65.5158, 62.5075, 80.5644



19.1386, 19.6394, 20.9115



0.0000, 0.0000, 0.0000



20.3446, 21.4041, 23.3091

Same Dimension

The Same Dimension uses a secret algorithm to generate beautiful new colors.



62.0980, 61.1418, 62.5623



79.4769, 77.2127, 77.9398



65.3423, 67.6305, 63.6437



13.7075, 13.7009, 14.2289



17.8935, 9.2248, 0.8375



1.2403, 0.6395, 0.0581

Inverse Universe

The Inverse Universe completely reimagines the original color for something new.



64.4768, 72.0246, 82.4562



83.1121, 93.8433, 108.3408



60.9502, 64.9713, 81.2806



14.1165, 15.5720, 17.6494



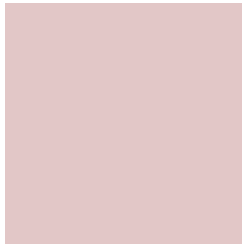
23.3420, 34.1536, 46.4104



1.6180, 2.3675, 3.2169

Previews

White Background



This preview shows how the XYZ color 62.0963, 61.1391, 62.5610 looks on a white background.

Color Contrast Check

Large Text (above 18pt) WCAG AA × Fail

Any Text WCAG AA × Fail

Large Text (above 18pt) WCAG AAA × Fail

Any Text WCAG AAA × Fail

Black Background



This preview shows how the XYZ color 62.0963, 61.1391, 62.5610 looks on a black background.

Color Contrast Check

Large Text (above 18pt) WCAG AA ✓ Pass

Any Text WCAG AA ✓ Pass

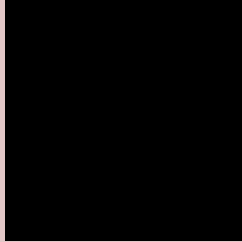
Large Text (above 18pt) WCAG AAA ✓ Pass

Any Text WCAG AAA ✓ Pass

If you want to check with other color combinations, try the [Color Contrast Checker](#).

XYZ 62.0963, 61.1391, 62.5610

Background



This preview shows how black text looks on a background with the XYZ color 62.0963, 61.1391, 62.5610.

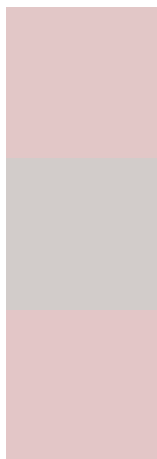


This preview shows how white text looks on a background with the XYZ color 62.0963, 61.1391,

Color Blindness Simulation

Color vision deficiency is a very complex topic, and I could not describe the different causes any better than Wikipedia does, so if you want to learn more, you should check out their [article about color blindness](#).

Dichromacy



Original Color

62.0963, 61.1391, 62.5610

Protanopia

58.8319, 61.1516, 64.5798

Deuteranopia

62.1814, 60.8426, 62.4993



Tritanopia

63.8448, 61.1800, 70.7313

Trichromacy



Original Color

62.0963, 61.1391, 62.5610

Protanomaly

59.9820, 61.0570, 63.8821

Deuteranomaly

62.1814, 60.8426, 62.4993

Tritanomaly

63.1351, 61.2241, 67.5213

Monochromacy



Original Color

62.0963, 61.1391, 62.5610

Achromatopsia

59.3074, 62.3960, 67.9493

Achromatomaly

60.2235, 61.8415, 65.8892

CSS Examples

Text

The CSS property to change the color of the text to XYZ 62.0963, 61.1391, 62.5610 is called "color". The color property can be set on classes, ids or directly on the HTML element.

This example shows how text in the color `rgb(226, 199, 199)` looks like.

```
.text, #text, p{  
    color:rgb(226, 199, 199)  
}
```

If you want to add a text shadow in that color use the text-shadow property, you can generate a text shadow directly with our [CSS Text Shadow Generator](#).

Here you see how black text with a 4 pixel rgb(226, 199, 199) colored shadow looks like.

```
.shadow{ text-shadow: 4px 4px 2px rgb(226, 199, 199) }
```

Border

The CSS property to change the border of an element to XYZ 62.0963, 61.1391, 62.5610 is called "border". The border property can be set on classes, ids or directly on the HTML element.

This example shows the color as border, it can be applied via the CSS property "border" or "border-color".

```
.border, #border, table{ border:4px solid rgb(226, 199, 199) }
```


If only the border color should be changed use the property `border-color`.

```
.border{ border-color:rgb(226, 199, 199) }
```

If you want to add a box shadow in that color use:

Here you see how a box with a 4 pixel `rgb(226, 199, 199)` colored shadow looks like.

```
.boxshadow{ -moz-box-shadow:4px 4px 4px  
4px rgb(226, 199, 199); -webkit-box-  
shadow:4px 4px 4px 4px rgb(226, 199, 199);  
box-shadow:4px 4px 4px 4px rgb(226, 199,  
199) }
```

Background

The CSS property to change the background color of an element to XYZ 62.0963, 61.1391, 62.5610 is called "background". The background property can be set on classes, ids or directly on the HTML element.

```
.background, #background, body{  
background: rgb(226, 199, 199) }
```

If only the background color should be changed can be used:

```
.background{ background-color: rgb(226,  
199, 199) }
```

This example shows the color as background, it is applied via the CSS property "background".

To optimize and compress your CSS code, you can use our [online CSS compressor and optimizer](#) based on csstidy. If you want to create a linear or radial gradient as background or border, check our [CSS Gradient Generator](#).

Hey! You found this booklet interesting? Support Converting Colors with the new Membership Option!

The pro membership hides all ads, plus gives you double the colors in the color bucket, and more awesome pro features!

[Learn more, Memberships starting at \\$2.50/m!](#)

**Follow me
on Twitter!**

@ConvertingColor