

Converting Colors

XYZ(62.1959, 62.8019, 56.6294)

Have a look what the booklet for
XYZ(62.1959, 62.8019, 56.6294)
contains.

XYZ(62.1116, 62.6736, 56.4005)	3
<i>Conversions</i>	4
<i>Details</i>	6
<i>Harmonies</i>	12
<i>Previews</i>	24
<i>Color Blindness Simulation</i>	28
<i>CSS Examples</i>	31

Color

**XYZ(62.1116, 62.6736,
56.4005)**

Conversions

Conversions Part 1

Format	Color
Hex	E3CBBC
RGB	227, 203, 188
RGB Percent	89%, 80%, 74%
CMY	0.1098, 0.2039, 0.2627
CMYK	0.00, 0.11, 0.17, 0.11
HSL	23°, 41%, 81%
HSV	23°, 17%, 89%
XYZ	62.1116, 62.6736, 56.4005
YIQ	208.4660, 19.1190, 0.4230

Conversions

Conversions Part 2

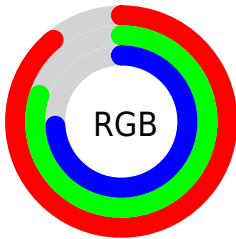
Format	Color
R _Y B	227, 212, 188
Decimal	14928828
CIE Lab	83.27, 6.00, 10.53
CIE LCh	83, 12.124, 60.325
Yxy	62.6736, 0.3428, 0.3459
Android (android.graphics.Color)	4293118908 (0xFFE3CBBC)
YUV	208.4660, -10.0897, 16.2543
Hunter-Lab	79.1667, 1.5037, 13.1768

Details

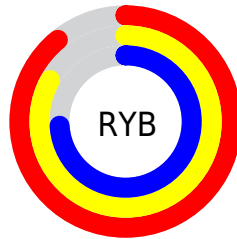
The XYZ color **62.1116, 62.6736, 56.4005** is a light color, and the websafe version is hex **CCCCCC**. A complement of this color would be **58.1473, 63.3230, 81.8315**, and the grayscale version is **60.3129, 63.4539, 69.1013**.

A 20% lighter version of the original color is **93.3291, 99.3117, 99.8380**, and **31.9152, 31.9021, 27.3973** is the 20% darker color. If you saturate the color by 10%, you get **56.7037, 55.4705, 43.4596**, and if you desaturate by 10%, it is **68.2050, 70.6306, 71.4703**.

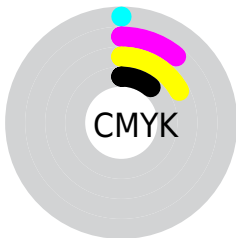
Distribution



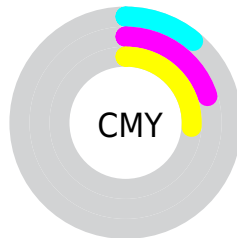
- Red (89%)
- Green (80%)
- Blue (74%)



- Red (89%)
- Yellow (83%)
- Blue (74%)



- Cyan (0%)
- Magenta (11%)
- Yellow (17%)
- Black (11%)



- Cyan (11%)
- Magenta (20%)
- Yellow (26%)

Brightness & Saturation Gradients

These gradients show how the XYZ color 62.1116, 62.6736, 56.4005 changes by changing the brightness by 10 percent. The first figure shows a shift by +10% for each color and the second figure -10%.

Similar to the brightness gradients but the following saturation gradients show a change of the XYZ color 62.1116, 62.6736, 56.4005 by changing the saturation by 10% instead.

62.1116, 62.6736,
56.4005

62.1116, 62.6736,
56.4005

422.0491,
434.3839, 428.6297

45.3788, 45.5772,
40.1180

106.9758,
108.6985, 101.0815

31.9585, 31.9123,
27.3161

135.8380,
138.3958, 130.3171

21.4852, 21.2945,
17.5762

169.4740,
173.0621, 164.7075

13.5936, 13.3395,
10.4799

208.2492,
213.0819, 204.6712

7.9183, 7.6627,
5.6085

252.5290,
258.8397, 250.6267

4.0941, 3.8799,
2.5436

302.6786,

1.7555, 1.6066,

310.7196, 302.9926

0.8631

359.0636,
369.1063, 362.1874

■ 0.4906, 0.3620,
0.0000

■ 0.0000, 0.0000,
0.0000

■ 62.1116, 62.6736,
56.4005

■ 62.1116, 62.6736,
56.4005

■ 56.7037, 55.4705,
43.4596

■ 68.2050, 70.6306,
71.4703

■ 51.9506, 48.9901,
32.5465

■ 75.0031, 79.3549,
88.7559

■ 47.8262, 43.2112,
23.5578

■ 82.3527, 88.7989,
107.4072

■ 44.3011, 38.1084,
16.3792

■ 85.4888, 95.0710,
108.4525

■ 41.3428, 33.6543,
10.8844

■ 38.9154, 29.8197,
6.9301

■ 36.9777, 26.5720,
4.3489

■ 35.4782, 23.8737,
2.9220

■ 35.1140, 23.2015,
2.6276

Harmonies

Analogous

The Analogous color harmony consists of three colors that are next to each other on the color wheel.



64.0480, 62.6736, 61.1775



62.1116, 62.6736, 56.4005



59.5406, 62.6736, 54.7422

Triad

The Triadic color harmony groups three colors that are evenly spaced from another and form a triangle on the color wheel.



62.1116, 62.6736, 56.4005



54.6479, 62.6736, 68.3232



62.1628, 62.6736, 81.5395

Complementary

The Complementary color scheme is a pair of colors which are on the opposite of each other on the color wheel.



62.1116, 62.6736, 56.4005



58.1473, 63.3230, 81.8315

Split Complementary

Split-complementary colors differ from the complementary color scheme. The scheme consists of three colors, the original color and two neighbors of the complement color.



59.5981, 62.6736, 83.7941



62.1116, 62.6736, 56.4005



55.3046, 62.6736, 75.8280

Square

The Square scheme is like the rectangle color scheme, but the four colors are evenly spaced on the color wheel.



62.1116, 62.6736, 56.4005



55.2773, 62.6736, 61.3102



57.0975, 62.6736, 81.6323



64.0781, 62.6736, 75.6752

Rectangle

The Rectangle color scheme consists of four colors that form a rectangle on the color wheel.



62.1116, 62.6736, 56.4005



57.8278, 62.6736, 55.5253



57.0975, 62.6736, 81.6323



61.3456, 62.6736, 82.7632

Sweetspot

The Sweet Spot groups the original color and five complimentary colors.



62.1133, 62.6764, 56.4018



90.6129, 94.3024, 97.6278



61.5524, 57.0541, 70.0895



19.2654, 20.0176, 20.5700



0.0000, 0.0000, 0.0000



20.3446, 21.4041, 23.3091

Same Dimension

The Same Dimension uses a secret algorithm to generate beautiful new colors.



62.1133, 62.6764, 56.4018



77.9708, 77.7685, 66.4376



66.9972, 72.4443, 58.0298



14.8293, 15.2725, 15.0708



20.5831, 13.7404, 1.5673



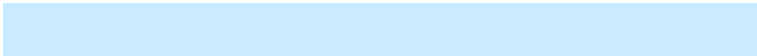
1.6088, 1.1908, 0.1451

Inverse Universe

The Inverse Universe completely reimagines the original color for something new.



58.1473, 63.3230, 81.8315



71.7948, 78.7724, 106.0284



53.5756, 54.1795, 80.3076



14.3174, 15.3563, 18.3538



13.6434, 14.3489, 44.4337



1.0975, 1.2389, 3.3133

Previews

White Background



This preview shows how the XYZ color 62.1116, 62.6736, 56.4005 looks on a white background.

Color Contrast Check

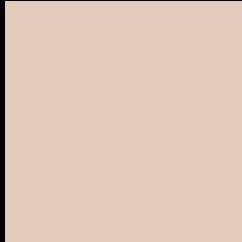
Large Text (above 18pt) WCAG AA × Fail

Any Text WCAG AA × Fail

Large Text (above 18pt) WCAG AAA × Fail

Any Text WCAG AAA × Fail

Black Background



This preview shows how the XYZ color 62.1116, 62.6736, 56.4005 looks on a black background.

Color Contrast Check

Large Text (above 18pt) WCAG AA ✓ Pass

Any Text WCAG AA ✓ Pass

Large Text (above 18pt) WCAG AAA ✓ Pass

Any Text WCAG AAA ✓ Pass

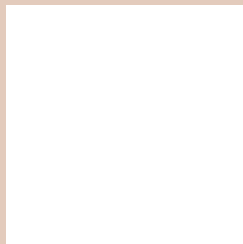
If you want to check with other color combinations, try the [Color Contrast Checker](#).

XYZ 62.1116, 62.6736, 56.4005

Background



This preview shows how black text looks on a background with the XYZ color 62.1116, 62.6736, 56.4005.



This preview shows how white text looks on a background with the XYZ color 62.1116, 62.6736,

Color Blindness Simulation

Color vision deficiency is a very complex topic, and I could not describe the different causes any better than Wikipedia does, so if you want to learn more, you should check out their [article about color blindness](#).

Dichromacy



Original Color

62.1116, 62.6736, 56.4005

Protanopia

59.6314, 62.7904, 57.6920

Deuteranopia

64.1005, 62.6448, 56.8573



Tritanopia

65.3223, 62.5761, 72.9255

Trichromacy



Original Color

62.1116, 62.6736, 56.4005

Protanomaly

60.4700, 62.8768, 57.0934

Deuteranomaly

63.3507, 62.6032, 56.8888

Tritanomaly

63.9868, 62.3743, 66.4246

Monochromacy



Original Color

62.1116, 62.6736, 56.4005

Achromatopsia

59.9535, 63.0757, 68.6895

Achromatomaly

60.6383, 62.8067, 64.1853

CSS Examples

Text

The CSS property to change the color of the text to XYZ 62.1116, 62.6736, 56.4005 is called "color". The color property can be set on classes, ids or directly on the HTML element.

This example shows how text in the color `rgb(227, 203, 188)` looks like.

```
.text, #text, p{  
    color:rgb(227, 203, 188)  
}
```

If you want to add a text shadow in that color use the text-shadow property, you can generate a text shadow directly with our [CSS Text Shadow Generator](#).

Here you see how black text with a 4 pixel rgb(227, 203, 188) colored shadow looks like.

```
.shadow{ text-shadow: 4px 4px 2px rgb(227, 203, 188) }
```

Border

The CSS property to change the border of an element to XYZ 62.1116, 62.6736, 56.4005 is called "border". The border property can be set on classes, ids or directly on the HTML element.

This example shows the color as border, it can be applied via the CSS property "border" or "border-color".

```
.border, #border, table{ border:4px solid rgb(227, 203, 188) }
```


If only the border color should be changed use the property `border-color`.

```
.border{ border-color:rgb(227, 203, 188) }
```

If you want to add a box shadow in that color use:

Here you see how a box with a 4 pixel `rgb(227, 203, 188)` colored shadow looks like.

```
.boxshadow{ -moz-box-shadow:4px 4px 4px 4px rgb(227, 203, 188); -webkit-box-shadow:4px 4px 4px 4px rgb(227, 203, 188); box-shadow:4px 4px 4px 4px rgb(227, 203, 188) }
```

Background

The CSS property to change the background color of an element to XYZ 62.1116, 62.6736, 56.4005 is called "background". The background property can be set on classes, ids or directly on the HTML element.

```
.background, #background, body{  
background: rgb(227, 203, 188) }
```

If only the background color should be changed can be used:

```
.background{ background-color: rgb(227,  
203, 188) }
```

This example shows the color as background, it is applied via the CSS property "background".

To optimize and compress your CSS code, you can use our [online CSS compressor and optimizer](#) based on csstidy. If you want to create a linear or radial gradient as background or border, check our [CSS Gradient Generator](#).

Hey! You found this booklet interesting? Support Converting Colors with the new Membership Option!

The pro membership hides all ads, plus gives you double the colors in the color bucket, and more awesome pro features!

[Learn more, Memberships starting at \\$2.50/m!](#)

**Follow me
on Twitter!**

@ConvertingColor