

Converting Colors

XYZ(62.2048, 62.0637, 61.6863)

Have a look what the booklet for
XYZ(62.2048, 62.0637, 61.6863)
contains.

XYZ(62.0160, 61.8121, 61.4856)	3
<i>Conversions</i>	4
<i>Details</i>	6
<i>Harmonies</i>	12
<i>Previews</i>	24
<i>Color Blindness Simulation</i>	28
<i>CSS Examples</i>	31

Color

**XYZ(62.0160, 61.8121,
61.4856)**

Conversions

Conversions Part 1

Format	Color
Hex	E1C9C5
RGB	225, 201, 197
RGB Percent	88%, 79%, 77%
CMY	0.1176, 0.2117, 0.2274
CMYK	0.00, 0.11, 0.12, 0.12
HSL	9°, 32%, 83%
HSV	9°, 12%, 88%
XYZ	62.0160, 61.8121, 61.4856
YIQ	207.7200, 15.5880, 3.8440

Conversions

Conversions Part 2

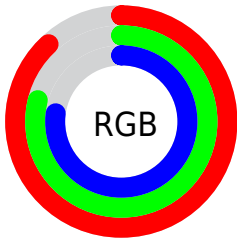
Format	Color
R_{YB}	225, 202, 197
Decimal	14797253
CIE Lab	82.81, 7.75, 5.06
CIE LCh	83, 9.253, 33.128
Yxy	61.8121, 0.3347, 0.3336
Android (android.graphics.Color)	4292987333 (0xFFE1C9C5)
YUV	207.7200, -5.2850, 15.1546
Hunter-Lab	78.6207, 3.2147, 8.6665

Details

The XYZ color **62.0160, 61.8121, 61.4856** is a light color, and the websafe version is hex **CCCCCC**. A complement of this color would be **62.4725, 69.0178, 81.2638**, and the grayscale version is **59.8004, 62.9147, 68.5141**.

A 20% lighter version of the original color is **94.8894, 99.9358, 108.0543**, and **31.9692, 31.3967, 30.3618** is the 20% darker color. If you saturate the color by 10%, you get **55.4119, 52.4259, 47.4998**, and if you desaturate by 10%, it is **69.5727, 72.4862, 77.6888**.

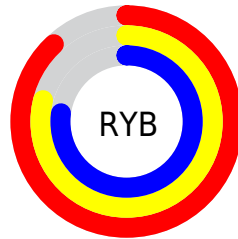
Distribution



Red (88%)

Green (79%)

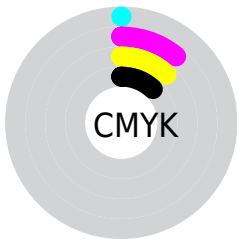
Blue (77%)



Red (88%)

Yellow (79%)

Blue (77%)

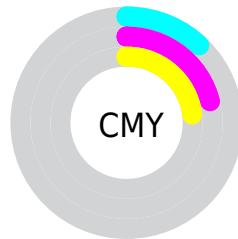


Cyan (0%)

Magenta (11%)

Yellow (12%)

Black (12%)



Cyan (12%)

Magenta (21%)

Yellow (23%)

Brightness & Saturation Gradients

These gradients show how the XYZ color 62.0160, 61.8121, 61.4856 changes by changing the brightness by 10 percent. The first figure shows a shift by +10% for each color and the second figure -10%.

Similar to the brightness gradients but the following saturation gradients show a change of the XYZ color 62.0160, 61.8121, 61.4856 by changing the saturation by 10% instead.

62.0160, 61.8121,
61.4856

62.0160, 61.8121,
61.4856

421.7061,
431.2454, 448.0080

45.3013, 44.8809,
44.1841

106.8385,
107.4539, 108.5461

31.8971, 31.3636,
30.4770

135.6769,
136.9333, 139.1422

21.4381, 20.8759,
19.9458

169.2873,
171.3642, 175.0068

13.5589, 13.0333,
12.1720

208.0350,
211.1311, 216.5586

7.8941, 7.4515,
6.7369

252.2854,
256.6182, 264.2161

4.0785, 3.7460,
3.2222

302.4038,

1.7467, 1.5325,

308.2100, 318.3978

1.2092

358.7556,
366.2909, 379.5222

■ 0.4852, 0.3115,
0.0000

■ 0.0000, 0.0000,
0.0000

■ 62.0160, 61.8121,
61.4856

■ 62.0160, 61.8121,
61.4856

■ 55.4119, 52.4259,
47.4998

■ 69.5727, 72.4862,
77.6888

■ 49.7173, 44.2710,
35.6311

■ 78.1125, 84.4860,
96.1960

■ 44.8937, 37.2986,
25.7772

■ 84.8616, 94.7477,
108.4232

■ 40.8976, 31.4536,
17.8258

■ 37.6818, 26.6763,
11.6537

■ 35.1942, 22.9017,
7.1231

■ 33.3761, 20.0574,
4.0756

■ 32.1592, 18.0610,
2.3215

■ 31.5729, 17.0503,
1.6270

Harmonies

Analogous

The Analogous color harmony consists of three colors that are next to each other on the color wheel.



62.6576, 61.8121, 66.7061



62.0160, 61.8121, 61.4856



60.4984, 61.8121, 57.9868

Triad

The Triadic color harmony groups three colors that are evenly spaced from another and form a triangle on the color wheel.



62.0160, 61.8121, 61.4856



55.4006, 61.8121, 62.4668



58.9598, 61.8121, 78.8577

Complementary

The Complementary color scheme is a pair of colors which are on the opposite of each other on the color wheel.



62.0160, 61.8121, 61.4856



62.4725, 69.0178, 81.2638

Split Complementary

Split-complementary colors differ from the complementary color scheme. The scheme consists of three colors, the original color and two neighbors of the complement color.



57.0367, 61.8121, 77.5669



62.0160, 61.8121, 61.4856



55.0094, 61.8121, 67.9031

Square

The Square scheme is like the rectangle color scheme, but the four colors are evenly spaced on the color wheel.



62.0160, 61.8121, 61.4856



56.6826, 61.8121, 58.5304



55.6018, 61.8121, 73.4760



60.8682, 61.8121, 76.9108

Rectangle

The Rectangle color scheme consists of four colors that form a rectangle on the color wheel.



62.0160, 61.8121, 61.4856



59.2099, 61.8121, 56.9917



55.6018, 61.8121, 73.4760



58.2936, 61.8121, 78.7883

Sweetspot

The Sweet Spot groups the original color and five complimentary colors.



62.0177, 61.8148, 61.4869



90.7254, 93.9094, 99.5708



64.1049, 61.1755, 77.0230



19.2500, 19.8621, 20.9486



0.0000, 0.0000, 0.0000



20.3446, 21.4041, 23.3091

Same Dimension

The Same Dimension uses a secret algorithm to generate beautiful new colors.



62.0177, 61.8148, 61.4869



79.9117, 78.6164, 76.4380



65.3626, 68.5046, 62.6019



13.8646, 14.0151, 14.2812



18.2443, 9.9265, 0.9544



1.3155, 0.7898, 0.0831

Inverse Universe

The Inverse Universe completely reimagines the original color for something new.



62.4725, 69.0178, 81.2638



80.6307, 90.0128, 107.7323



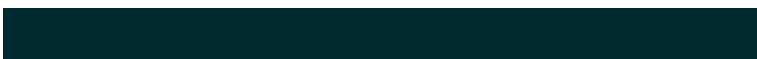
58.9948, 62.0623, 80.1045



13.9408, 15.2206, 17.5908



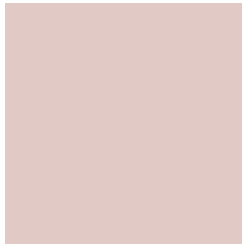
18.8639, 25.1974, 44.9177



1.3539, 1.8393, 3.1289

Previews

White Background



This preview shows how the XYZ color 62.0160, 61.8121, 61.4856 looks on a white background.

Color Contrast Check

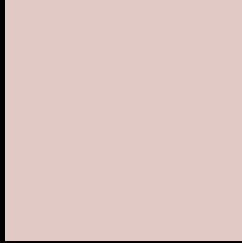
Large Text (above 18pt) WCAG AA × Fail

Any Text WCAG AA × Fail

Large Text (above 18pt) WCAG AAA × Fail

Any Text WCAG AAA × Fail

Black Background



This preview shows how the XYZ color 62.0160, 61.8121, 61.4856 looks on a black background.

Color Contrast Check

Large Text (above 18pt) WCAG AA ✓ Pass

Any Text WCAG AA ✓ Pass

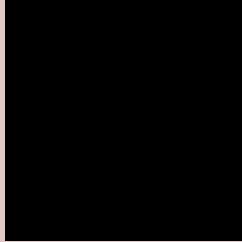
Large Text (above 18pt) WCAG AAA ✓ Pass

Any Text WCAG AAA ✓ Pass

If you want to check with other color combinations, try the [Color Contrast Checker](#).

XYZ 62.0160, 61.8121, 61.4856

Background



This preview shows how black text looks on a background with the XYZ color 62.0160, 61.8121, 61.4856.



This preview shows how white text looks on a background with the XYZ color 62.0160, 61.8121,

61.4856.

Color Blindness Simulation

Color vision deficiency is a very complex topic, and I could not describe the different causes any better than Wikipedia does, so if you want to learn more, you should check out their [article about color blindness](#).

Dichromacy



Original Color

62.0160, 61.8121, 61.4856

Protanopia

59.2915, 61.7832, 62.8332

Deuteranopia

63.1346, 61.7011, 61.4053



Tritanopia

64.0102, 61.5741, 72.1296

Trichromacy



Original Color

62.0160, 61.8121, 61.4856

Protanomaly

60.4012, 62.0147, 62.2126

Deuteranomaly

62.7272, 61.8338, 61.4523

Tritanomaly

63.1726, 61.5697, 68.2291

Monochromacy



Original Color

62.0160, 61.8121, 61.4856

Achromatopsia

59.9535, 63.0757, 68.6895

Achromatomaly

60.4620, 62.3184, 65.9687

CSS Examples

Text

The CSS property to change the color of the text to XYZ 62.0160, 61.8121, 61.4856 is called "color". The color property can be set on classes, ids or directly on the HTML element.

This example shows how text in the color `rgb(225, 201, 197)` looks like.

```
.text, #text, p{  
    color:rgb(225, 201, 197)  
}
```

If you want to add a text shadow in that color use the text-shadow property, you can generate a text shadow directly with our [CSS Text Shadow Generator](#).

Here you see how black text with a 4 pixel rgb(225, 201, 197) colored shadow looks like.

```
.shadow{ text-shadow: 4px 4px 2px rgb(225, 201, 197) }
```

Border

The CSS property to change the border of an element to XYZ 62.0160, 61.8121, 61.4856 is called "border". The border property can be set on classes, ids or directly on the HTML element.

This example shows the color as border, it can be applied via the CSS property "border" or "border-color".

```
.border, #border, table{ border:4px solid rgb(225, 201, 197) }
```


If only the border color should be changed use the property `border-color`.

```
.border{ border-color:rgb(225, 201, 197) }
```

If you want to add a box shadow in that color use:

Here you see how a box with a 4 pixel `rgb(225, 201, 197)` colored shadow looks like.

```
.boxshadow{ -moz-box-shadow:4px 4px 4px  
4px rgb(225, 201, 197); -webkit-box-  
shadow:4px 4px 4px 4px rgb(225, 201, 197);  
box-shadow:4px 4px 4px 4px rgb(225, 201,  
197) }
```

Background

The CSS property to change the background color of an element to XYZ 62.0160, 61.8121, 61.4856 is called "background". The background property can be set on classes, ids or directly on the HTML element.

```
.background, #background, body{  
background: rgb(225, 201, 197) }
```

If only the background color should be changed can be used:

```
.background{ background-color: rgb(225,  
201, 197) }
```

This example shows the color as background, it is applied via the CSS property "background".

To optimize and compress your CSS code, you can use our [online CSS compressor and optimizer](#) based on csstidy. If you want to create a linear or radial gradient as background or border, check our [CSS Gradient Generator](#).

Hey! You found this booklet interesting? Support Converting Colors with the new Membership Option!

The pro membership hides all ads, plus gives you double the colors in the color bucket, and more awesome pro features!

[Learn more, Memberships starting at \\$2.50/m!](#)

**Follow me
on Twitter!**

@ConvertingColor