

Converting Colors

XYZ(62.2559, 62.3394, 58.2341)

Have a look what the booklet for
XYZ(62.2559, 62.3394, 58.2341)
contains.

XYZ(62.2031, 62.3335, 58.0433)	3
<i>Conversions</i>	4
<i>Details</i>	6
<i>Harmonies</i>	12
<i>Previews</i>	24
<i>Color Blindness Simulation</i>	28
<i>CSS Examples</i>	31

Color

**XYZ(62.2031, 62.3335,
58.0433)**

Conversions

Conversions Part 1

Format	Color
Hex	E3CABF
RGB	227, 202, 191
RGB Percent	89%, 79%, 75%
CMY	0.1098, 0.2078, 0.2510
CMYK	0.00, 0.11, 0.16, 0.11
HSL	18°, 39%, 82%
HSV	18°, 16%, 89%
XYZ	62.2031, 62.3335, 58.0433
YIQ	208.2210, 18.4310, 1.8790

Conversions

Conversions Part 2

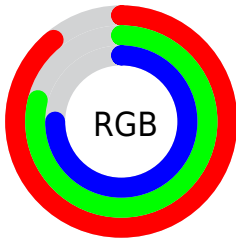
Format	Color
R _Y B	227, 207, 191
Decimal	14928575
CIE Lab	83.09, 6.99, 8.68
CIE LCh	83, 11.145, 51.150
Yxy	62.3335, 0.3407, 0.3414
Android (android.graphics.Color)	4293118655 (0xFFE3CABF)
YUV	208.2210, -8.4900, 16.4692
Hunter-Lab	78.9516, 2.4685, 11.6775

Details

The XYZ color **62.2031, 62.3335, 58.0433** is a light color, and the websafe version is hex **CCCCCC**. A complement of this color would be **59.9066, 65.7329, 82.2041**, and the grayscale version is **60.1439, 63.2761, 68.9077**.

A 20% lighter version of the original color is **93.7885, 99.4954, 102.2570**, and **31.9719, 31.6727, 28.4731** is the 20% darker color. If you saturate the color by 10%, you get **56.3852, 54.3901, 44.7197**, and if you desaturate by 10%, it is **68.7894, 71.1928, 73.5347**.

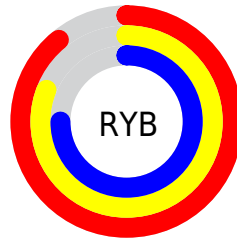
Distribution



Red (89%)

Green (79%)

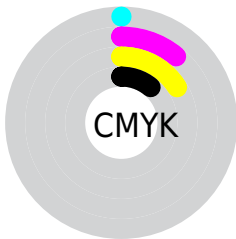
Blue (75%)



Red (89%)

Yellow (81%)

Blue (75%)

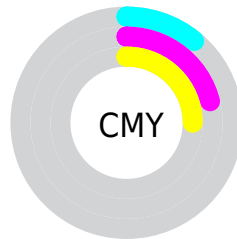


Cyan (0%)

Magenta (11%)

Yellow (16%)

Black (11%)



Cyan (11%)


Magenta (21%)


Yellow (25%)

Brightness & Saturation Gradients


These gradients show how the XYZ color 62.2031, 62.3335, 58.0433 changes by changing the brightness by 10 percent. The first figure shows a shift by +10% for each color and the second figure -10%.


Similar to the brightness gradients but the following saturation gradients show a change of the XYZ color 62.2031, 62.3335, 58.0433 by changing the saturation by 10% instead.

 62.2031, 62.3335,
58.0433

 62.2031, 62.3335,
58.0433

422.3773,
433.1466, 434.9500

 45.4530, 45.3022,
41.4285


 107.1073,
108.2074, 103.5013

 32.0172, 31.6955,
28.3319


135.9922,
137.8188, 133.1816

 21.5303, 21.1291,
18.3348


169.6527,
172.3924, 168.0542

 13.6268, 13.2184,
11.0187

208.4542,
212.3125, 208.5376

 7.9415, 7.5791,
5.9651

252.7620,
257.9636, 255.0503

 4.1091, 3.8268,
2.7554

302.9416,

 1.7640, 1.5772,

309.7300, 308.0110

0.9711

359.3582,
367.9962, 367.8380

■ 0.4958, 0.3421,
0.0000

■ 0.0000, 0.0000,
0.0000

■ 62.2031, 62.3335,
58.0433

■ 62.2031, 62.3335,
58.0433

■ 56.3852, 54.3901,
44.7197

■ 68.7894, 71.1928,
73.5347

■ 51.3016, 47.3247,
33.4625

■ 76.1663, 80.9879,
91.2810

■ 46.9228, 41.1086,
24.1681

■ 83.6942, 91.4816,
107.8543

■ 43.2157, 35.7086,
16.7224

■ 85.4889, 95.0711,
108.4525

■ 40.1438, 31.0891,
10.9993

■ 37.6671, 27.2117,
6.8566

■ 35.7400, 24.0341,
4.1290

■ 34.3089, 21.5087,
2.6133

■ 33.8309, 20.6350,
2.1999

Harmonies

Analogous

The Analogous color harmony consists of three colors that are next to each other on the color wheel.



63.6775, 62.3335, 63.1902



62.2031, 62.3335, 58.0433



59.9625, 62.3335, 55.5745

Triad

The Triadic color harmony groups three colors that are evenly spaced from another and form a triangle on the color wheel.



62.2031, 62.3335, 58.0433



54.7808, 62.3335, 65.8477



60.9353, 62.3335, 81.0267

Complementary

The Complementary color scheme is a pair of colors which are on the opposite of each other on the color wheel.



62.2031, 62.3335, 58.0433



59.9066, 65.7329, 82.2041

Split Complementary

Split-complementary colors differ from the complementary color scheme. The scheme consists of three colors, the original color and two neighbors of the complement color.



58.5355, 62.3335, 81.8584



62.2031, 62.3335, 58.0433



55.0253, 62.3335, 72.7766

Square

The Square scheme is like the rectangle color scheme, but the four colors are evenly spaced on the color wheel.



62.2031, 62.3335, 58.0433



55.7072, 62.3335, 59.8754



56.3844, 62.3335, 78.7488



62.9318, 62.3335, 76.5476

Rectangle

The Rectangle color scheme consists of four colors that form a rectangle on the color wheel.



62.2031, 62.3335, 58.0433



58.3538, 62.3335, 55.6556



56.3844, 62.3335, 78.7488



60.1475, 62.3335, 81.7536

Sweetspot

The Sweet Spot groups the original color and five complimentary colors.



62.2048, 62.3363, 58.0446



90.3052, 93.6870, 97.5252



62.7307, 58.5616, 73.0994



19.1908, 19.8683, 20.5451



0.0000, 0.0000, 0.0000



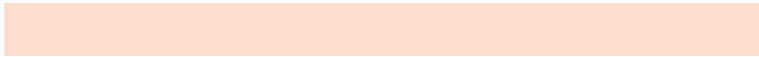
20.3446, 21.4041, 23.3091

Same Dimension

The Same Dimension uses a secret algorithm to generate beautiful new colors.



62.2048, 62.3363, 58.0446



78.3990, 77.6460, 69.5986



66.6241, 71.1748, 59.5177



14.7345, 15.0828, 15.0391



19.8205, 12.2151, 1.3131



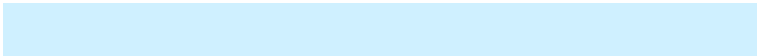
1.5445, 1.0623, 0.1236

Inverse Universe

The Inverse Universe completely reimagines the original color for something new.



59.9066, 65.7329, 82.2041



74.8728, 82.8530, 106.6538



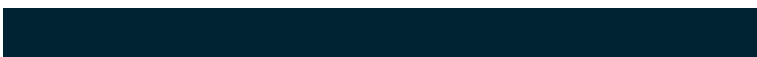
55.5916, 57.1030, 80.7658



14.4162, 15.5538, 18.3867



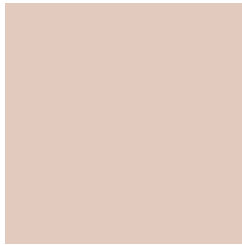
15.2861, 17.6344, 44.9813



1.2107, 1.4654, 3.3510

Previews

White Background



This preview shows how the XYZ color 62.2031, 62.3335, 58.0433 looks on a white background.

Color Contrast Check

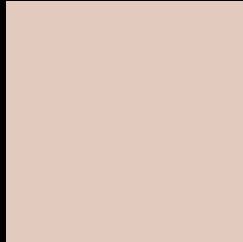
Large Text (above 18pt) WCAG AA × Fail

Any Text WCAG AA × Fail

Large Text (above 18pt) WCAG AAA × Fail

Any Text WCAG AAA × Fail

Black Background



This preview shows how the XYZ color 62.2031, 62.3335, 58.0433 looks on a black background.

Color Contrast Check

Large Text (above 18pt) WCAG AA ✓ Pass

Any Text WCAG AA ✓ Pass

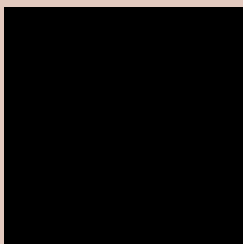
Large Text (above 18pt) WCAG AAA ✓ Pass

Any Text WCAG AAA ✓ Pass

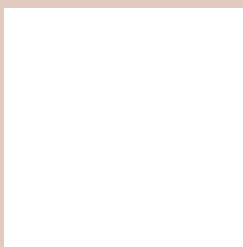
If you want to check with other color combinations, try the [Color Contrast Checker](#).

XYZ 62.2031, 62.3335, 58.0433

Background



This preview shows how black text looks on a background with the XYZ color 62.2031, 62.3335, 58.0433.



This preview shows how white text looks on a background with the XYZ color 62.2031, 62.3335,

Color Blindness Simulation

Color vision deficiency is a very complex topic, and I could not describe the different causes any better than Wikipedia does, so if you want to learn more, you should check out their [article about color blindness](#).

Dichromacy



Original Color

62.2031, 62.3335, 58.0433

Protanopia

59.4285, 62.2890, 59.3428

Deuteranopia

63.6625, 62.3938, 57.9780



Tritanopia

65.1941, 62.5249, 72.2507

Trichromacy



Original Color

62.2031, 62.3335, 58.0433

Protanomaly

60.5592, 62.5285, 58.7466

Deuteranomaly

63.2456, 62.5238, 58.0251

Tritanomaly

64.1080, 62.4228, 67.0625

Monochromacy



Original Color

62.2031, 62.3335, 58.0433

Achromatopsia

59.9535, 63.0757, 68.6895

Achromatomaly

60.7563, 62.8540, 64.8069

CSS Examples

Text

The CSS property to change the color of the text to XYZ 62.2031, 62.3335, 58.0433 is called "color". The color property can be set on classes, ids or directly on the HTML element.

This example shows how text in the color `rgb(227, 202, 191)` looks like.

```
.text, #text, p{  
    color:rgb(227, 202, 191)  
}
```

If you want to add a text shadow in that color use the text-shadow property, you can generate a text shadow directly with our [CSS Text Shadow Generator](#).

Here you see how black text with a 4 pixel rgb(227, 202, 191) colored shadow looks like.

```
.shadow{ text-shadow: 4px 4px 2px rgb(227, 202, 191) }
```

Border

The CSS property to change the border of an element to XYZ 62.2031, 62.3335, 58.0433 is called "border". The border property can be set on classes, ids or directly on the HTML element.

This example shows the color as border, it can be applied via the CSS property "border" or "border-color".

```
.border, #border, table{ border:4px solid rgb(227, 202, 191) }
```


If only the border color should be changed use the property `border-color`.

```
.border{ border-color:rgb(227, 202, 191) }
```

If you want to add a box shadow in that color use:

Here you see how a box with a 4 pixel `rgb(227, 202, 191)` colored shadow looks like.

```
.boxshadow{ -moz-box-shadow:4px 4px 4px  
4px rgb(227, 202, 191); -webkit-box-  
shadow:4px 4px 4px 4px rgb(227, 202, 191);  
box-shadow:4px 4px 4px 4px rgb(227, 202,  
191) }
```

Background

The CSS property to change the background color of an element to XYZ 62.2031, 62.3335, 58.0433 is called "background". The background property can be set on classes, ids or directly on the HTML element.

```
.background, #background, body{  
background: rgb(227, 202, 191) }
```

If only the background color should be changed can be used:

```
.background{ background-color: rgb(227,  
202, 191) }
```

This example shows the color as background, it is applied via the CSS property "background".

To optimize and compress your CSS code, you can use our [online CSS compressor and optimizer](#) based on csstidy. If you want to create a linear or radial gradient as background or border, check our [CSS Gradient Generator](#).

Hey! You found this booklet interesting? Support Converting Colors with the new Membership Option!

The pro membership hides all ads, plus gives you double the colors in the color bucket, and more awesome pro features!

[Learn more, Memberships starting at \\$2.50/m!](#)

**Follow me
on Twitter!**

@ConvertingColor