

Converting Colors

XYZ(62.2642, 62.1784, 66.4776)

Have a look what the booklet for
XYZ(62.2642, 62.1784, 66.4776)
contains.

XYZ(62.2642, 62.1784, 66.4776)	3
<i>Conversions</i>	4
<i>Details</i>	6
<i>Harmonies</i>	12
<i>Previews</i>	24
<i>Color Blindness Simulation</i>	28
<i>CSS Examples</i>	31

Color

**XYZ(62.2642, 62.1784,
66.4776)**

Conversions

Conversions Part 1

Format	Color
Hex	DECACD
RGB	222, 202, 205
RGB Percent	87%, 79%, 80%
CMY	0.1294, 0.2078, 0.1961
CMYK	0.00, 0.09, 0.08, 0.13
HSL	351°, 23%, 83%
HSV	351°, 9%, 87%
XYZ	62.2642, 62.1784, 66.4776
YIQ	208.3220, 10.9570, 5.1730

Conversions

Conversions Part 2

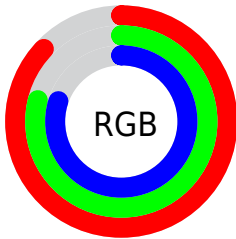
Format	Color
R _Y B	222, 202, 205
Decimal	14600909
CIE Lab	83.01, 7.49, 1.04
CIE LCh	83, 7.559, 7.871
Yxy	62.1784, 0.3261, 0.3257
Android (android.graphics.Color)	4292790989 (0xFFDECACD)
YUV	208.3220, -1.6377, 11.9956
Hunter-Lab	78.8533, 2.9541, 5.2126

Details

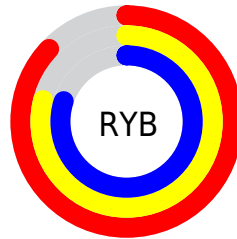
The XYZ color **62.2642, 62.1784, 66.4776** is a light color, and the websafe version is hex **CCCCCC**. A complement of this color would be **63.2670, 69.9152, 77.1817**, and the grayscale version is **60.1699, 63.3034, 68.9374**.

A 20% lighter version of the original color is **95.0500, 100.0000, 108.9000**, and **32.1122, 31.6297, 33.6908** is the 20% darker color. If you saturate the color by 10%, you get **55.2830, 51.6443, 53.5803**, and if you desaturate by 10%, it is **70.2730, 74.3266, 81.0749**.

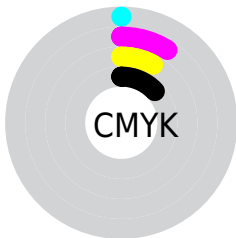
Distribution



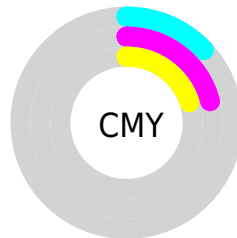
- Red (87%)
- Green (79%)
- Blue (80%)



- Red (87%)
- Yellow (79%)
- Blue (80%)



- Cyan (0%)
- Magenta (9%)
- Yellow (8%)
- Black (13%)



- Cyan (13%)
- Magenta (21%)
- Yellow (20%)

Brightness & Saturation Gradients

These gradients show how the XYZ color 62.2642, 62.1784, 66.4776 changes by changing the brightness by 10 percent. The first figure shows a shift by +10% for each color and the second figure -10%.

Similar to the brightness gradients but the following saturation gradients show a change of the XYZ color 62.2642, 62.1784, 66.4776 by changing the saturation by 10% instead.

62.2642, 62.1784,
66.4776

62.2642, 62.1784,
66.4776

422.5964,
432.5815, 466.5338

45.5026, 45.1769,
48.2013

107.1951,
107.9833, 115.8051

32.0565, 31.5968,
33.6252

136.0951,
137.5555, 147.6933

21.5604, 21.0537,
22.3308

169.7719,
172.0867, 184.9559

13.6490, 13.1633,
13.8995

208.5910,
211.9613, 228.0115

7.9570, 7.5411,
7.9129

252.9176,
257.5637, 277.2785

4.1190, 3.8027,
3.9523

303.1171,

1.7697, 1.5638,

309.2782, 333.1755

1.5992

359.5549,
367.4894, 396.1211

■ 0.4993, 0.3330,
0.2902

■ 0.0000, 0.0000,
0.0000

■ 62.2642, 62.1784,
66.4776

■ 62.2642, 62.1784,
66.4776

■ 55.2830, 51.6443,
53.5803

■ 70.2730, 74.3266,
81.0749

■ 49.2828, 42.6484,
42.3171

■ 79.3435, 88.1441,
97.4268

■ 44.2206, 35.1211,
32.6236

■ 83.9346, 94.2698,
108.3798

■ 40.0488, 28.9843,
24.4298

■ 36.7152, 24.1524,
17.6602

■ 34.1620, 20.5305,
12.2326

■ 32.3242, 18.0109,
8.0564

■ 31.1258, 16.4663,
5.0294

■ 30.4540, 15.6998,
3.0263

Harmonies

Analogous

The Analogous color harmony consists of three colors that are next to each other on the color wheel.



62.0556, 62.1784, 71.1462



62.2642, 62.1784, 66.4776



61.6124, 62.1784, 62.3296

Triad

The Triadic color harmony groups three colors that are evenly spaced from another and form a triangle on the color wheel.



62.2642, 62.1784, 66.4776



57.1919, 62.1784, 60.8477



57.9237, 62.1784, 76.3789

Complementary

The Complementary color scheme is a pair of colors which are on the opposite of each other on the color wheel.



62.2642, 62.1784, 66.4776



63.2670, 69.9152, 77.1817

Split Complementary

Split-complementary colors differ from the complementary color scheme. The scheme consists of three colors, the original color and two neighbors of the complement color.



56.6544, 62.1784, 73.3740



62.2642, 62.1784, 66.4776



56.2373, 62.1784, 64.3702

Square

The Square scheme is like the rectangle color scheme, but the four colors are evenly spaced on the color wheel.



62.2642, 62.1784, 66.4776



58.6697, 62.1784, 59.1782



56.0424, 62.1784, 68.9408



59.5298, 62.1784, 77.0067

Rectangle

The Rectangle color scheme consists of four colors that form a rectangle on the color wheel.



62.2642, 62.1784, 66.4776



60.7845, 62.1784, 60.3678



56.0424, 62.1784, 68.9408



57.4443, 62.1784, 75.6068

Sweetspot

The Sweet Spot groups the original color and five complimentary colors.



62.2659, 62.1811, 66.4789



91.6283, 94.8040, 102.6808



63.5207, 62.5778, 77.8389



19.4213, 20.0022, 21.6300



0.0000, 0.0000, 0.0000



20.3446, 21.4041, 23.3091

Same Dimension

The Same Dimension uses a secret algorithm to generate beautiful new colors.



62.2659, 62.1811, 66.4789



83.1409, 81.9490, 87.1505



63.5873, 65.3971, 65.1518



13.7905, 13.7338, 14.6671



18.0838, 9.3005, 1.8409



1.2800, 0.6553, 0.2675

Inverse Universe

The Inverse Universe completely reimagines the original color for something new.



62.2659, 62.1811, 66.4789



83.1409, 81.9490, 87.1505



61.8446, 66.4335, 78.6715



13.7905, 13.7338, 14.6671



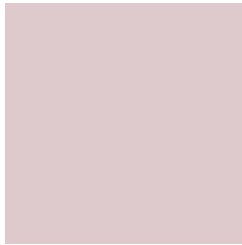
18.0838, 9.3005, 1.8409



1.2800, 0.6553, 0.2675

Previews

White Background



This preview shows how the XYZ color 62.2642, 62.1784, 66.4776 looks on a white background.

Color Contrast Check

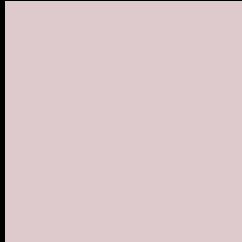
Large Text (above 18pt) WCAG AA × Fail

Any Text WCAG AA × Fail

Large Text (above 18pt) WCAG AAA × Fail

Any Text WCAG AAA × Fail

Black Background



This preview shows how the XYZ color 62.2642, 62.1784, 66.4776 looks on a black background.

Color Contrast Check

Large Text (above 18pt) WCAG AA ✓ Pass

Any Text WCAG AA ✓ Pass

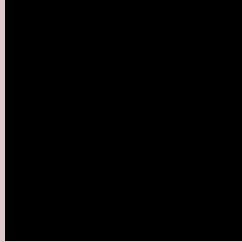
Large Text (above 18pt) WCAG AAA ✓ Pass

Any Text WCAG AAA ✓ Pass

If you want to check with other color combinations, try the [Color Contrast Checker](#).

XYZ 62.2642, 62.1784, 66.4776

Background



This preview shows how black text looks on a background with the XYZ color 62.2642, 62.1784, 66.4776.



This preview shows how white text looks on a background with the XYZ color 62.2642, 62.1784,

Color Blindness Simulation

Color vision deficiency is a very complex topic, and I could not describe the different causes any better than Wikipedia does, so if you want to learn more, you should check out their [article about color blindness](#).

Dichromacy



Original Color

62.2642, 62.1784, 66.4776

Protanopia

59.9121, 62.3492, 67.9084

Deuteranopia

63.3523, 62.0472, 66.3949



Tritanopia

63.7894, 62.1137, 73.5928

Trichromacy



Original Color

62.2642, 62.1784, 66.4776

Protanomaly

60.7035, 62.4150, 67.2404

Deuteranomaly

62.9574, 62.1886, 66.4430

Tritanomaly

63.2017, 62.2147, 70.9649

Monochromacy



Original Color

62.2642, 62.1784, 66.4776

Achromatopsia

59.9535, 63.0757, 68.6895

Achromatomaly

60.7744, 62.7937, 67.9487

CSS Examples

Text

The CSS property to change the color of the text to XYZ 62.2642, 62.1784, 66.4776 is called "color". The color property can be set on classes, ids or directly on the HTML element.

This example shows how text in the color rgb(222, 202, 205) looks like.

```
.text, #text, p{  
    color:rgb(222, 202, 205)  
}
```

If you want to add a text shadow in that color use the text-shadow property, you can generate a text shadow directly with our [CSS Text Shadow Generator](#).

Here you see how black text with a 4 pixel rgb(222, 202, 205) colored shadow looks like.

```
.shadow{ text-shadow: 4px 4px 2px rgb(222, 202, 205) }
```

Border

The CSS property to change the border of an element to XYZ 62.2642, 62.1784, 66.4776 is called "border". The border property can be set on classes, ids or directly on the HTML element.

This example shows the color as border, it can be applied via the CSS property "border" or "border-color".

```
.border, #border, table{ border:4px solid rgb(222, 202, 205) }
```


If only the border color should be changed use the property border-color.

```
.border{ border-color:rgb(222, 202, 205) }
```

If you want to add a box shadow in that color use:

Here you see how a box with a 4 pixel rgb(222, 202, 205) colored shadow looks like.

```
.boxshadow{ -moz-box-shadow:4px 4px 4px  
4px rgb(222, 202, 205); -webkit-box-  
shadow:4px 4px 4px 4px rgb(222, 202, 205);  
box-shadow:4px 4px 4px 4px rgb(222, 202,  
205) }
```

Background

The CSS property to change the background color of an element to XYZ 62.2642, 62.1784, 66.4776 is called "background". The background property can be set on classes, ids or directly on the HTML element.

```
.background, #background, body{  
background: rgb(222, 202, 205) }
```

If only the background color should be changed can be used:

```
.background{ background-color: rgb(222,  
202, 205) }
```

This example shows the color as background, it is applied via the CSS property "background".

To optimize and compress your CSS code, you can use our [online CSS compressor and optimizer](#) based on csstidy. If you want to create a linear or radial gradient as background or border, check our [CSS Gradient Generator](#).

Hey! You found this booklet interesting? Support Converting Colors with the new Membership Option!

The pro membership hides all ads, plus gives you double the colors in the color bucket, and more awesome pro features!

[Learn more, Memberships starting at \\$2.50/m!](#)

**Follow me
on Twitter!**

@ConvertingColor