

Converting Colors

XYZ(62.3071, 61.9283, 61.1603)

Have a look what the booklet for
XYZ(62.3071, 61.9283, 61.1603)
contains.

XYZ(62.2145, 61.9276, 60.8987)	3
<i>Conversions</i>	4
<i>Details</i>	6
<i>Harmonies</i>	12
<i>Previews</i>	24
<i>Color Blindness Simulation</i>	28
<i>CSS Examples</i>	31

Color

**XYZ(62.2145, 61.9276,
60.8987)**

Conversions

Conversions Part 1

Format	Color
Hex	E2C9C4
RGB	226, 201, 196
RGB Percent	89%, 79%, 77%
CMY	0.1137, 0.2117, 0.2314
CMYK	0.00, 0.11, 0.13, 0.11
HSL	10°, 34%, 83%
HSV	10°, 13%, 89%
XYZ	62.2145, 61.9276, 60.8987
YIQ	207.9050, 16.5050, 3.7450

Conversions

Conversions Part 2

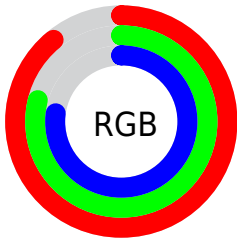
Format	Color
R _Y B	226, 202, 196
Decimal	14862788
CIE Lab	82.87, 7.95, 5.69
CIE LCh	83, 9.774, 35.609
Yxy	61.9276, 0.3362, 0.3347
Android (android.graphics.Color)	4293052868 (0xFFE2C9C4)
YUV	207.9050, -5.8692, 15.8693
Hunter-Lab	78.6941, 3.4051, 9.2033

Details

The XYZ color **62.2145, 61.9276, 60.8987** is a light color, and the websafe version is hex **CCCCCC**. A complement of this color would be **62.3485, 68.9382, 81.9724**, and the grayscale version is **59.9235, 63.0441, 68.6551**.

A 20% lighter version of the original color is **94.7296, 99.8718, 107.2129**, and **31.8938, 31.3665, 29.9645** is the 20% darker color. If you saturate the color by 10%, you get **55.7099, 52.7293, 46.9806**, and if you desaturate by 10%, it is **69.6482, 72.3626, 77.0396**.

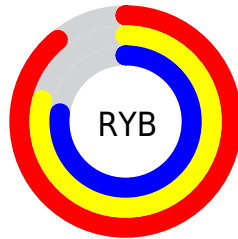
Distribution



Red (89%)

Green (79%)

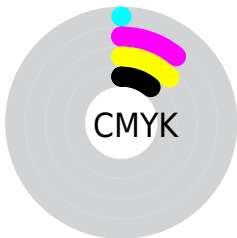
Blue (77%)



Red (89%)

Yellow (79%)

Blue (77%)

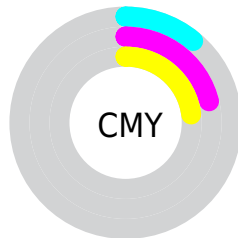


Cyan (0%)

Magenta (11%)

Yellow (13%)

Black (11%)



Cyan (11%)

Magenta (21%)

Yellow (23%)

Brightness & Saturation Gradients

These gradients show how the XYZ color 62.2145, 61.9276, 60.8987 changes by changing the brightness by 10 percent. The first figure shows a shift by +10% for each color and the second figure -10%.

Similar to the brightness gradients but the following saturation gradients show a change of the XYZ color 62.2145, 61.9276, 60.8987 by changing the saturation by 10% instead.

62.2145, 61.9276,
60.8987

62.2145, 61.9276,
60.8987

422.4182,
431.6669, 445.7988

45.4623, 44.9742,
43.7134

107.1237,
107.6209, 107.6883

32.0245, 31.4371,
30.1097

136.0114,
137.1296, 138.1298

21.5359, 20.9319,
19.6691

169.6749,
171.5921, 173.8270

13.6310, 13.0742,
11.9731

208.4797,
211.3930, 215.1985

7.9444, 7.4797,
6.6030

252.7911,
256.9165, 262.6629

4.1109, 3.7639,
3.1404

302.9744,

1.7651, 1.5424,

308.5470, 316.6387

1.1668

359.3949,
366.6691, 377.5445

■ 0.4965, 0.3183,
0.0000

■ 0.0000, 0.0000,
0.0000

■ 62.2145, 61.9276,
60.8987

■ 62.2145, 61.9276,
60.8987

■ 55.7099, 52.7293,
46.9806

■ 69.6482, 72.3626,
77.0396

■ 50.0926, 44.7139,
35.1841

■ 78.0404, 84.0694,
95.4909

■ 45.3253, 37.8355,
25.4057

■ 85.1743, 94.9089,
108.4378

■ 41.3657, 32.0424,
17.5317

■ 38.1682, 27.2785,
11.4374

■ 35.6823, 23.4828,
6.9827

■ 33.8510, 20.5877,
4.0066

■ 32.6082, 18.5164,
2.3149

■ 32.0478, 17.5359,
1.6957

Harmonies

Analogous

The Analogous color harmony consists of three colors that are next to each other on the color wheel.



62.9833, 61.9276, 66.3014



62.2145, 61.9276, 60.8987



60.5486, 61.9276, 57.4078

Triad

The Triadic color harmony groups three colors that are evenly spaced from another and form a triangle on the color wheel.



62.2145, 61.9276, 60.8987



55.2486, 61.9276, 62.7516



59.2570, 61.9276, 79.6421

Complementary

The Complementary color scheme is a pair of colors which are on the opposite of each other on the color wheel.



62.2145, 61.9276, 60.8987



62.3485, 68.9382, 81.9724

Split Complementary

Split-complementary colors differ from the complementary color scheme. The scheme consists of three colors, the original color and two neighbors of the complement color.



57.2038, 61.9276, 78.5525



62.2145, 61.9276, 60.8987



54.9214, 61.9276, 68.5685

Square

The Square scheme is like the rectangle color scheme, but the four colors are evenly spaced on the color wheel.



62.2145, 61.9276, 60.8987



56.5338, 61.9276, 58.4321



55.6289, 61.9276, 74.4094



61.2499, 61.9276, 77.3042

Rectangle

The Rectangle color scheme consists of four colors that form a rectangle on the color wheel.



62.2145, 61.9276, 60.8987



59.1709, 61.9276, 56.5133



55.6289, 61.9276, 74.4094



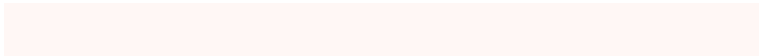
58.5508, 61.9276, 79.6661

Sweetspot

The Sweet Spot groups the original color and five complimentary colors.



62.2162, 61.9304, 60.9000



90.7994, 94.0574, 99.5954



64.1558, 60.8699, 76.7750



19.2686, 19.8994, 20.9548



0.0000, 0.0000, 0.0000



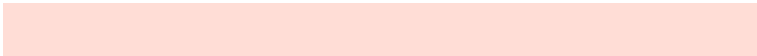
20.3446, 21.4041, 23.3091

Same Dimension

The Same Dimension uses a secret algorithm to generate beautiful new colors.



62.2162, 61.9304, 60.9000



79.2611, 77.8412, 74.5997



65.8844, 69.2668, 62.1227



13.8911, 14.0681, 14.2901



18.3412, 10.1202, 0.9867



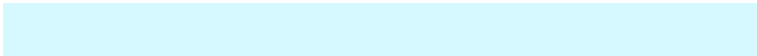
1.3280, 0.8148, 0.0873

Inverse Universe

The Inverse Universe completely reimagines the original color for something new.



62.3485, 68.9382, 81.9724



79.4671, 88.8006, 107.5596



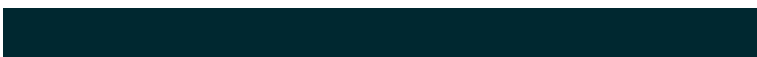
58.5645, 61.3702, 80.7111



13.9118, 15.1627, 17.5812



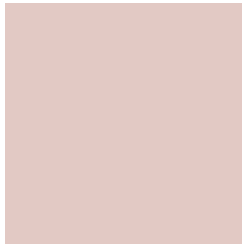
18.2032, 23.8759, 44.6975



1.3141, 1.7597, 3.1156

Previews

White Background



This preview shows how the XYZ color 62.2145, 61.9276, 60.8987 looks on a white background.

Color Contrast Check

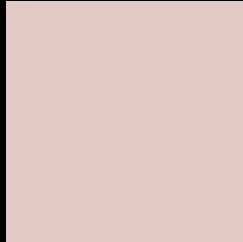
Large Text (above 18pt) WCAG AA × Fail

Any Text WCAG AA × Fail

Large Text (above 18pt) WCAG AAA × Fail

Any Text WCAG AAA × Fail

Black Background



This preview shows how the XYZ color 62.2145, 61.9276, 60.8987 looks on a black background.

Color Contrast Check

Large Text (above 18pt) WCAG AA ✓ Pass

Any Text WCAG AA ✓ Pass

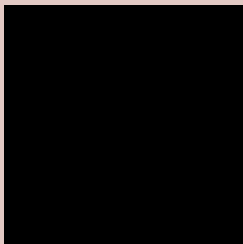
Large Text (above 18pt) WCAG AAA ✓ Pass

Any Text WCAG AAA ✓ Pass

If you want to check with other color combinations, try the [Color Contrast Checker](#).

XYZ 62.2145, 61.9276, 60.8987

Background



This preview shows how black text looks on a background with the XYZ color 62.2145, 61.9276, 60.8987.



This preview shows how white text looks on a background with the XYZ color 62.2145, 61.9276,

Color Blindness Simulation

Color vision deficiency is a very complex topic, and I could not describe the different causes any better than Wikipedia does, so if you want to learn more, you should check out their [article about color blindness](#).

Dichromacy



Original Color

62.2145, 61.9276, 60.8987

Protanopia

59.5315, 62.2632, 62.9132

Deuteranopia

63.0204, 61.6554, 60.8037



Tritanopia

64.3266, 61.7372, 72.1444

Trichromacy



Original Color

62.2145, 61.9276, 60.8987

Protanomaly

60.4012, 62.0147, 62.2126

Deuteranomaly

62.9312, 61.9521, 60.8657

Tritanomaly

63.3645, 61.6827, 67.5978

Monochromacy



Original Color

62.2145, 61.9276, 60.8987

Achromatopsia

59.9535, 63.0757, 68.6895

Achromatomaly

60.7547, 62.4693, 65.9824

CSS Examples

Text

The CSS property to change the color of the text to XYZ 62.2145, 61.9276, 60.8987 is called "color". The color property can be set on classes, ids or directly on the HTML element.

This example shows how text in the color `rgb(226, 201, 196)` looks like.

```
.text, #text, p{  
    color:rgb(226, 201, 196)  
}
```

If you want to add a text shadow in that color use the text-shadow property, you can generate a text shadow directly with our [CSS Text Shadow Generator](#).

Here you see how black text with a 4 pixel rgb(226, 201, 196) colored shadow looks like.

```
.shadow{ text-shadow: 4px 4px 2px rgb(226, 201, 196) }
```

Border

The CSS property to change the border of an element to XYZ 62.2145, 61.9276, 60.8987 is called "border". The border property can be set on classes, ids or directly on the HTML element.

This example shows the color as border, it can be applied via the CSS property "border" or "border-color".

```
.border, #border, table{ border:4px solid rgb(226, 201, 196) }
```


If only the border color should be changed use the property `border-color`.

```
.border{ border-color:rgb(226, 201, 196) }
```

If you want to add a box shadow in that color use:

Here you see how a box with a 4 pixel `rgb(226, 201, 196)` colored shadow looks like.

```
.boxshadow{ -moz-box-shadow:4px 4px 4px 4px rgb(226, 201, 196); -webkit-box-shadow:4px 4px 4px 4px rgb(226, 201, 196); box-shadow:4px 4px 4px 4px rgb(226, 201, 196) }
```

Background

The CSS property to change the background color of an element to XYZ 62.2145, 61.9276, 60.8987 is called "background". The background property can be set on classes, ids or directly on the HTML element.

```
.background, #background, body{  
background: rgb(226, 201, 196) }
```

If only the background color should be changed can be used:

```
.background{ background-color: rgb(226,  
201, 196) }
```

This example shows the color as background, it is applied via the CSS property "background".

To optimize and compress your CSS code, you can use our [online CSS compressor and optimizer](#) based on csstidy. If you want to create a linear or radial gradient as background or border, check our [CSS Gradient Generator](#).

Hey! You found this booklet interesting? Support Converting Colors with the new Membership Option!

The pro membership hides all ads, plus gives you double the colors in the color bucket, and more awesome pro features!

[Learn more, Memberships starting at \\$2.50/m!](#)

**Follow me
on Twitter!**

@ConvertingColor