

Converting Colors

XYZ(62.3247, 63.3211, 53.1811)

Have a look what the booklet for
XYZ(62.3247, 63.3211, 53.1811)
contains.

XYZ(62.3495, 63.2211, 53.1727)	3
<i>Conversions</i>	4
<i>Details</i>	6
<i>Harmonies</i>	12
<i>Previews</i>	24
<i>Color Blindness Simulation</i>	28
<i>CSS Examples</i>	31

Color

**XYZ(62.3495, 63.2211,
53.1727)**

Conversions

Conversions Part 1

Format	Color
Hex	E5CCB6
RGB	229, 204, 182
RGB Percent	90%, 80%, 71%
CMY	0.1020, 0.2000, 0.2863
CMYK	0.00, 0.11, 0.21, 0.10
HSL	28°, 47%, 81%
HSV	28°, 21%, 90%
XYZ	62.3495, 63.2211, 53.1727
YIQ	208.9670, 21.9620, -1.5420

Conversions

Conversions Part 2

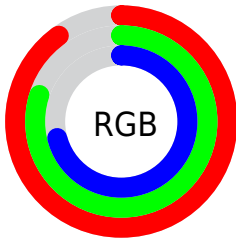
Format	Color
RYB	229, 223, 182
Decimal	15060150
CIELab	83.56, 5.31, 14.16
CIElCh	84, 15.120, 69.426
Yxy	63.2211, 0.3488, 0.3537
Android (android.graphics.Color)	4293250230 (0xFFE5CCB6)
YUV	208.9670, -13.2947, 17.5689
Hunter-Lab	79.5117, 0.8262, 16.0086

Details

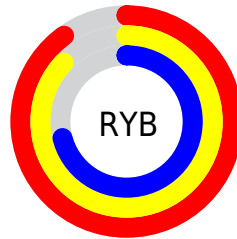
The XYZ color **62.3495, 63.2211, 53.1727** is a light color, and the websafe version is hex **FFCCCC**. A complement of this color would be **55.7468, 60.2266, 82.8161**, and the grayscale version is **60.6582, 63.8171, 69.4968**.

A 20% lighter version of the original color is **92.4326, 98.9530, 95.1170**, and **32.1024, 32.2819, 25.3079** is the 20% darker color. If you saturate the color by 10%, you get **57.3918, 56.7881, 40.7834**, and if you desaturate by 10%, it is **67.9241, 70.2674, 67.6784**.

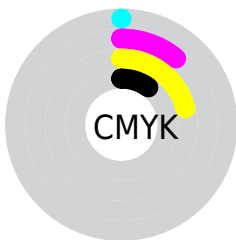
Distribution



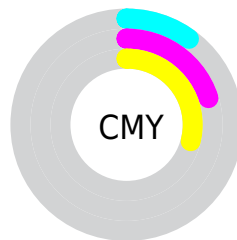
- Red (90%)
- Green (80%)
- Blue (71%)



- Red (90%)
- Yellow (87%)
- Blue (71%)



- Cyan (0%)
- Magenta (11%)
- Yellow (21%)
- Black (10%)





- Cyan (10%)
- Magenta (20%)
- Yellow (29%)

Brightness & Saturation Gradients


These gradients show how the XYZ color 62.3495, 63.2211, 53.1727 changes by changing the brightness by 10 percent. The first figure shows a shift by +10% for each color and the second figure -10%.


Similar to the brightness gradients but the following saturation gradients show a change of the XYZ color 62.3495, 63.2211, 53.1727 by changing the saturation by 10% instead.


 62.3495, 63.2211,
53.1727

 62.3495, 63.2211,
53.1727

422.9021,
436.3715, 416.0324

 45.5718, 46.0201,
37.5520


 107.3176,
109.4884, 96.3026

 32.1113, 32.2617,
25.3360

136.2387,
139.3235, 124.6488

 21.6025, 21.5615,
16.1063


169.9384,
174.1388, 158.0740

 13.6801, 13.5350,
9.4442

208.7819,
214.3187, 196.9966

 7.9787, 7.7980,
4.9313

253.1347,
260.2474, 241.8352

 4.1330, 3.9660,
2.1490

303.3621,

 1.7777, 1.6545,

312.3096, 293.0083

0.6447

359.8294,
370.8895, 350.9346

■ 0.5041, 0.3940,
0.0000

■ 0.0000, 0.0000,
0.0000

■ 62.3495, 63.2211,
53.1727

■ 62.3495, 63.2211,
53.1727

■ 57.3918, 56.7881,
40.7834

■ 67.9241, 70.2674,
67.6784

■ 53.0219, 50.9420,
30.4059

■ 74.1328, 77.9354,
84.3904

■ 49.2158, 45.6668,
21.9325

■ 80.9988, 86.2442,
103.3983

■ 45.9456, 40.9426,
15.2438

■ 85.4006, 93.9525,
108.2413

■ 43.1808, 36.7478,
10.2065

■ 86.1234, 95.3981,
108.4822

■ 40.8866, 33.0590,
6.6686

■ 39.0229, 29.8500,
4.4489

■ 37.5932, 27.2179,
3.2722

Harmonies

Analogous

The Analogous color harmony consists of three colors that are next to each other on the color wheel.



65.1307, 63.2211, 57.9188



62.3495, 63.2211, 53.1727



59.0555, 63.2211, 52.4065

Triad

The Triadic color harmony groups three colors that are evenly spaced from another and form a triangle on the color wheel.



62.3495, 63.2211, 53.1727



54.0393, 63.2211, 71.8594



64.2145, 63.2211, 83.8657

Complementary

The Complementary color scheme is a pair of colors which are on the opposite of each other on the color wheel.



62.3495, 63.2211, 53.1727



55.7468, 60.2266, 82.8161

Split Complementary

Split-complementary colors differ from the complementary color scheme. The scheme consists of three colors, the original color and two neighbors of the complement color.



61.1360, 63.2211, 88.3861



62.3495, 63.2211, 53.1727



55.3159, 63.2211, 81.0477

Square

The Square scheme is like the rectangle color scheme, but the four colors are evenly spaced on the color wheel.



62.3495, 63.2211, 53.1727



54.3373, 63.2211, 62.6406



57.8853, 63.2211, 87.3102



66.2345, 63.2211, 75.4292

Rectangle

The Rectangle color scheme consists of four colors that form a rectangle on the color wheel.



62.3495, 63.2211, 53.1727



57.0229, 63.2211, 54.1779



57.8853, 63.2211, 87.3102



63.2646, 63.2211, 85.9271

Sweetspot

The Sweet Spot groups the original color and five complimentary colors.



62.3512, 63.2239, 53.1740



90.1425, 93.9713, 95.5919



60.3124, 54.6230, 66.4395



19.1838, 19.9771, 20.1641



0.0000, 0.0000, 0.0000



20.3446, 21.4041, 23.3091

Same Dimension

The Same Dimension uses a secret algorithm to generate beautiful new colors.



62.3512, 63.2239, 53.1740



76.5534, 76.7963, 60.2230



68.3450, 75.2116, 55.1720



14.9305, 15.4749, 15.1045



21.6120, 15.7982, 1.9103



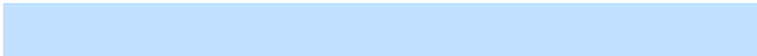
1.6893, 1.3520, 0.1719

Inverse Universe

The Inverse Universe completely reimagines the original color for something new.



55.7468, 60.2266, 82.8161



66.5656, 72.2624, 105.0474



50.4857, 49.7043, 81.0623



14.2143, 15.1499, 18.3194



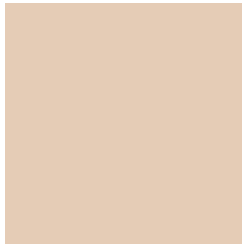
12.1722, 11.4064, 43.9433



0.9923, 1.0285, 3.2782

Previews

White Background



This preview shows how the XYZ color 62.3495, 63.2211, 53.1727 looks on a white background.

Color Contrast Check

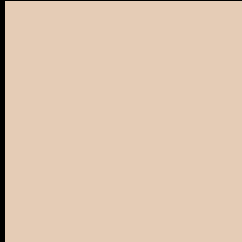
Large Text (above 18pt) WCAG AA × Fail

Any Text WCAG AA × Fail

Large Text (above 18pt) WCAG AAA × Fail

Any Text WCAG AAA × Fail

Black Background



This preview shows how the XYZ color 62.3495, 63.2211, 53.1727 looks on a black background.

Color Contrast Check

Large Text (above 18pt) WCAG AA ✓ Pass

Any Text WCAG AA ✓ Pass

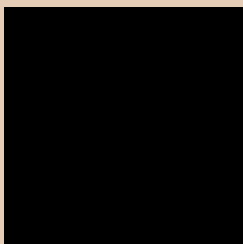
Large Text (above 18pt) WCAG AAA ✓ Pass

Any Text WCAG AAA ✓ Pass

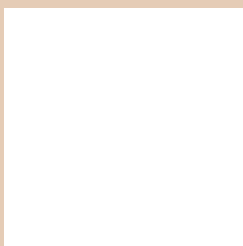
If you want to check with other color combinations, try the [Color Contrast Checker](#).

XYZ 62.3495, 63.2211, 53.1727

Background



This preview shows how black text looks on a background with the XYZ color 62.3495, 63.2211, 53.1727.



This preview shows how white text looks on a background with the XYZ color 62.3495, 63.2211,

Color Blindness Simulation

Color vision deficiency is a very complex topic, and I could not describe the different causes any better than Wikipedia does, so if you want to learn more, you should check out their [article about color blindness](#).

Dichromacy



Original Color

62.3495, 63.2211, 53.1727

Protanopia

60.1210, 63.4779, 54.4311

Deuteranopia

64.6938, 63.3693, 53.6215



Tritanopia

66.2934, 63.0768, 72.9710

Trichromacy



Original Color

62.3495, 63.2211, 53.1727

Protanomaly

60.9843, 63.5741, 53.8566

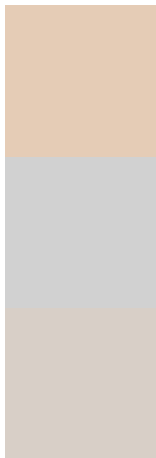
Deuteranomaly

63.9287, 63.3221, 53.6527

Tritanomaly

64.9448, 63.2409, 65.2837

Monochromacy



Original Color

62.3495, 63.2211, 53.1727

Achromatopsia

60.6036, 63.7597, 69.4343

Achromatomaly

60.9405, 63.3481, 63.0483

CSS Examples

Text

The CSS property to change the color of the text to XYZ 62.3495, 63.2211, 53.1727 is called "color". The color property can be set on classes, ids or directly on the HTML element.

This example shows how text in the color rgb(229, 204, 182) looks like.

```
.text, #text, p{  
    color:rgb(229, 204, 182)  
}
```

If you want to add a text shadow in that color use the text-shadow property, you can generate a text shadow directly with our [CSS Text Shadow Generator](#).

Here you see how black text with a 4 pixel rgb(229, 204, 182) colored shadow looks like.

```
.shadow{ text-shadow: 4px 4px 2px rgb(229, 204, 182) }
```

Border

The CSS property to change the border of an element to XYZ 62.3495, 63.2211, 53.1727 is called "border". The border property can be set on classes, ids or directly on the HTML element.

This example shows the color as border, it can be applied via the CSS property "border" or "border-color".

```
.border, #border, table{ border:4px solid rgb(229, 204, 182) }
```


If only the border color should be changed use the property `border-color`.

```
.border{ border-color:rgb(229, 204, 182) }
```

If you want to add a box shadow in that color use:

Here you see how a box with a 4 pixel `rgb(229, 204, 182)` colored shadow looks like.

```
.boxshadow{ -moz-box-shadow:4px 4px 4px 4px rgb(229, 204, 182); -webkit-box-shadow:4px 4px 4px 4px rgb(229, 204, 182); box-shadow:4px 4px 4px 4px rgb(229, 204, 182) }
```

Background

The CSS property to change the background color of an element to XYZ 62.3495, 63.2211, 53.1727 is called "background". The background property can be set on classes, ids or directly on the HTML element.

```
.background, #background, body{  
background: rgb(229, 204, 182) }
```

If only the background color should be changed can be used:

```
.background{ background-color: rgb(229,  
204, 182) }
```

This example shows the color as background, it is applied via the CSS property "background".

To optimize and compress your CSS code, you can use our [online CSS compressor and optimizer](#) based on csstidy. If you want to create a linear or radial gradient as background or border, check our [CSS Gradient Generator](#).

Hey! You found this booklet interesting? Support Converting Colors with the new Membership Option!

The pro membership hides all ads, plus gives you double the colors in the color bucket, and more awesome pro features!

[Learn more, Memberships starting at \\$2.50/m!](#)

**Follow me
on Twitter!**

@ConvertingColor