

Converting Colors

XYZ(62.3738, 61.2140, 65.6548)

Have a look what the booklet for
XYZ(62.3738, 61.2140, 65.6548)
contains.

XYZ(62.3738, 61.2140, 65.6548)	3
<i>Conversions</i>	4
<i>Details</i>	6
<i>Harmonies</i>	12
<i>Previews</i>	24
<i>Color Blindness Simulation</i>	28
<i>CSS Examples</i>	31

Color

**XYZ(62.3738, 61.2140,
65.6548)**

Conversions

Conversions Part 1

Format	Color
Hex	E1C7CC
RGB	225, 199, 204
RGB Percent	88%, 78%, 80%
CMY	0.1176, 0.2196, 0.2000
CMYK	0.00, 0.12, 0.09, 0.12
HSL	348°, 30%, 83%
HSV	348°, 12%, 88%
XYZ	62.3738, 61.2140, 65.6548
YIQ	207.3440, 13.8910, 7.0670

Conversions

Conversions Part 2

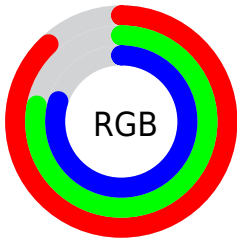
Format	Color
R _Y B	225, 199, 204
Decimal	14796748
CIE Lab	82.49, 9.96, 0.85
CIE LCh	82, 9.996, 4.883
Yxy	61.2140, 0.3296, 0.3235
Android (android.graphics.Color)	4292986828 (0xFFE1C7CC)
YUV	207.3440, -1.6486, 15.4843
Hunter-Lab	78.2394, 5.3844, 5.0142

Details

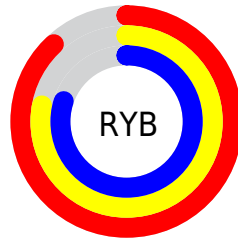
The XYZ color **62.3738, 61.2140, 65.6548** is a light color, and the websafe version is hex **CCCCCC**. A complement of this color would be **63.3990, 71.1613, 78.1075**, and the grayscale version is **59.5354, 62.6359, 68.2105**.

A 20% lighter version of the original color is **95.0500, 100.0000, 108.9000**, and **32.2080, 30.9989, 33.1400** is the 20% darker color. If you saturate the color by 10%, you get **55.5206, 50.7946, 53.2353**, and if you desaturate by 10%, it is **70.2503, 73.2713, 79.6720**.

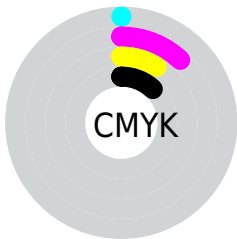
Distribution



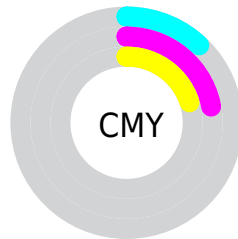
- Red (88%)
- Green (78%)
- Blue (80%)



- Red (88%)
- Yellow (78%)
- Blue (80%)



- Cyan (0%)
- Magenta (12%)
- Yellow (9%)
- Black (12%)



- Cyan (12%)
- Magenta (22%)
- Yellow (20%)

Brightness & Saturation Gradients

These gradients show how the XYZ color 62.3738, 61.2140, 65.6548 changes by changing the brightness by 10 percent. The first figure shows a shift by +10% for each color and the second figure -10%.

Similar to the brightness gradients but the following saturation gradients show a change of the XYZ color 62.3738, 61.2140, 65.6548 by changing the saturation by 10% instead.

62.3738, 61.2140,
65.6548

62.3738, 61.2140,
65.6548

422.9891,
429.0582, 463.5118

45.5915, 44.3979,
47.5375

107.3525,
106.5887, 114.6130

32.1269, 30.9834,
33.1034

136.2796,
135.9161, 146.2910

21.6144, 20.5862,
21.9339

169.9858,
170.1828, 183.3264

13.6889, 12.8219,
13.6105

208.8363,
209.7731, 226.1375

7.9849, 7.3060,
7.7146

253.1966,
255.0713, 275.1431

4.1370, 3.6542,
3.8277

303.4319,

1.7799, 1.4821,

306.4620, 330.7617

1.5313

359.9076,
364.3295, 393.4117

■ 0.5055, 0.2761,
0.2411

■ 0.0000, 0.0000,
0.0000

■ 62.3738, 61.2140,
65.6548

■ 62.3738, 61.2140,
65.6548

■ 55.5206, 50.7946,
53.2353

■ 70.2503, 73.2713,
79.6720

■ 49.6434, 41.9347,
42.3527

■ 79.1846, 87.0247,
95.3373

■ 44.6987, 34.5614,
32.9478

■ 84.8616, 94.7477,
108.4232

■ 40.6378, 28.5928,
24.9560

■ 37.4074, 23.9392,
18.3081

■ 34.9484, 20.5003,
12.9287

■ 33.1936, 18.1613,
8.7348

■ 32.0635, 16.7852,
5.6328

■ 31.4921, 16.1839,
3.7729

Harmonies

Analogous

The Analogous color harmony consists of three colors that are next to each other on the color wheel.



61.9832, 61.2140, 71.7736



62.3738, 61.2140, 65.6548



61.6190, 61.2140, 60.1443

Triad

The Triadic color harmony groups three colors that are evenly spaced from another and form a triangle on the color wheel.



62.3738, 61.2140, 65.6548



55.8632, 61.2140, 57.4550



56.4549, 61.2140, 77.8870

Complementary

The Complementary color scheme is a pair of colors which are on the opposite of each other on the color wheel.



62.3738, 61.2140, 65.6548



63.3990, 71.1613, 78.1075

Split Complementary

Split-complementary colors differ from the complementary color scheme. The scheme consists of three colors, the original color and two neighbors of the complement color.



54.8754, 61.2140, 73.6122



62.3738, 61.2140, 65.6548



54.5396, 61.2140, 61.7793

Square

The Square scheme is like the rectangle color scheme, but the four colors are evenly spaced on the color wheel.



62.3738, 61.2140, 65.6548



57.8330, 61.2140, 55.5985



54.1825, 61.2140, 67.6585



58.5326, 61.2140, 79.0804

Rectangle

The Rectangle color scheme consists of four colors that form a rectangle on the color wheel.



62.3738, 61.2140, 65.6548



60.5784, 61.2140, 57.4800



54.1825, 61.2140, 67.6585



55.8498, 61.2140, 76.7504

Sweetspot

The Sweet Spot groups the original color and five complimentary colors.



62.3755, 61.2167, 65.6561



91.6788, 94.8241, 102.9465



63.4706, 61.4703, 79.7545



19.4348, 20.0076, 21.7014



0.0000, 0.0000, 0.0000



20.3446, 21.4041, 23.3091

Same Dimension

The Same Dimension uses a secret algorithm to generate beautiful new colors.



62.3755, 61.2167, 65.6561



80.3995, 77.5796, 82.8044



63.6264, 64.6622, 63.1637



13.8143, 13.7434, 14.7925



18.1793, 9.3387, 2.3439



1.2913, 0.6598, 0.3267

Inverse Universe

The Inverse Universe completely reimagines the original color for something new.



62.3755, 61.2167, 65.6561



80.3995, 77.5796, 82.8044



62.0103, 67.3092, 80.9585



13.8143, 13.7434, 14.7925



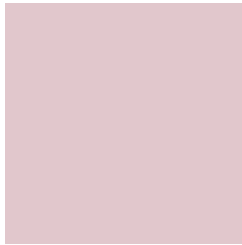
18.1793, 9.3387, 2.3439



1.2913, 0.6598, 0.3267

Previews

White Background



This preview shows how the XYZ color 62.3738, 61.2140, 65.6548 looks on a white background.

Color Contrast Check

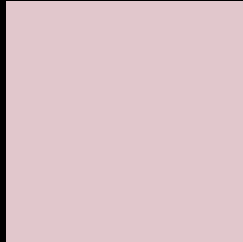
Large Text (above 18pt) WCAG AA × Fail

Any Text WCAG AA × Fail

Large Text (above 18pt) WCAG AAA × Fail

Any Text WCAG AAA × Fail

Black Background



This preview shows how the XYZ color 62.3738, 61.2140, 65.6548 looks on a black background.

Color Contrast Check

Large Text (above 18pt) WCAG AA ✓ Pass

Any Text WCAG AA ✓ Pass

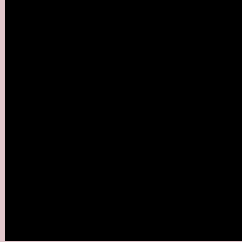
Large Text (above 18pt) WCAG AAA ✓ Pass

Any Text WCAG AAA ✓ Pass

If you want to check with other color combinations, try the [Color Contrast Checker](#).

XYZ 62.3738, 61.2140, 65.6548

Background



This preview shows how black text looks on a background with the XYZ color 62.3738, 61.2140, 65.6548.



This preview shows how white text looks on a background with the XYZ color 62.3738, 61.2140,

65.6548.

Color Blindness Simulation

Color vision deficiency is a very complex topic, and I could not describe the different causes any better than Wikipedia does, so if you want to learn more, you should check out their [article about color blindness](#).

Dichromacy



Original Color

62.3738, 61.2140, 65.6548

Protanopia

58.8678, 61.1006, 67.7224

Deuteranopia

62.6865, 61.3752, 65.6694



Tritanopia

63.5684, 61.3610, 71.4442

Trichromacy



Original Color

62.3738, 61.2140, 65.6548

Protanomaly

59.9927, 60.9934, 67.0035

Deuteranomaly

62.6865, 61.3752, 65.6694

Tritanomaly

63.1910, 61.2101, 69.4570

Monochromacy



Original Color

62.3738, 61.2140, 65.6548

Achromatopsia

59.3074, 62.3960, 67.9493

Achromatomaly

60.4650, 61.9381, 67.1609

CSS Examples

Text

The CSS property to change the color of the text to XYZ 62.3738, 61.2140, 65.6548 is called "color". The color property can be set on classes, ids or directly on the HTML element.

This example shows how text in the color `rgb(225, 199, 204)` looks like.

```
.text, #text, p{  
    color:rgb(225, 199, 204)  
}
```

If you want to add a text shadow in that color use the text-shadow property, you can generate a text shadow directly with our [CSS Text Shadow Generator](#).

Here you see how black text with a 4 pixel rgb(225, 199, 204) colored shadow looks like.

```
.shadow{ text-shadow: 4px 4px 2px rgb(225, 199, 204) }
```

Border

The CSS property to change the border of an element to XYZ 62.3738, 61.2140, 65.6548 is called "border". The border property can be set on classes, ids or directly on the HTML element.

This example shows the color as border, it can be applied via the CSS property "border" or "border-color".

```
.border, #border, table{ border:4px solid rgb(225, 199, 204) }
```


If only the border color should be changed use the property border-color.

```
.border{ border-color:rgb(225, 199, 204) }
```

If you want to add a box shadow in that color use:

Here you see how a box with a 4 pixel rgb(225, 199, 204) colored shadow looks like.

```
.boxshadow{ -moz-box-shadow:4px 4px 4px  
4px rgb(225, 199, 204); -webkit-box-  
shadow:4px 4px 4px 4px rgb(225, 199, 204);  
box-shadow:4px 4px 4px 4px rgb(225, 199,  
204) }
```

Background

The CSS property to change the background color of an element to XYZ 62.3738, 61.2140, 65.6548 is called "background". The background property can be set on classes, ids or directly on the HTML element.

```
.background, #background, body{  
background: rgb(225, 199, 204) }
```

If only the background color should be changed can be used:

```
.background{ background-color: rgb(225,  
199, 204) }
```

This example shows the color as background, it is applied via the CSS property "background".

To optimize and compress your CSS code, you can use our [online CSS compressor and optimizer](#) based on csstidy. If you want to create a linear or radial gradient as background or border, check our [CSS Gradient Generator](#).

Hey! You found this booklet interesting? Support Converting Colors with the new Membership Option!

The pro membership hides all ads, plus gives you double the colors in the color bucket, and more awesome pro features!

[Learn more, Memberships starting at \\$2.50/m!](#)

**Follow me
on Twitter!**

@ConvertingColor