

# Converting Colors

XYZ(62.3821, 63.2959, 62.5230)

Have a look what the booklet for  
XYZ(62.3821, 63.2959, 62.5230)  
contains.

<b>XYZ(62.4558, 63.4278, 62.3771)</b> .....	3
<b><i>Conversions</i></b> .....	4
<b><i>Details</i></b> .....	6
<b><i>Harmonies</i></b> .....	12
<b><i>Previews</i></b> .....	24
<b><i>Color Blindness Simulation</i></b> .....	28
<b><i>CSS Examples</i></b> .....	31

# Color

**XYZ(62.4558, 63.4278,  
62.3771)**

# Conversions

## Conversions Part 1

Format	Color
Hex	DFCDC6
RGB	223, 205, 198
RGB Percent	87%, 80%, 78%
CMY	0.1255, 0.1961, 0.2235
CMYK	0.00, 0.08, 0.11, 0.13
HSL	17°, 28%, 83%
HSV	17°, 11%, 87%
XYZ	62.4558, 63.4278, 62.3771
YIQ	209.5840, 12.9750, 1.6390

# Conversions

## Conversions Part 2

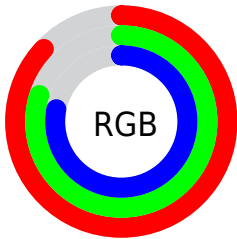
<b>Format</b>	<b>Color</b>
R <sub>Y</sub> B	223, 208, 198
Decimal	14667206
CIE Lab	83.67, 5.09, 5.73
CIE LCh	84, 7.669, 48.387
Yxy	63.4278, 0.3318, 0.3369
Android (android.graphics.Color)	4292857286 (0xFFDFCDC6)
YUV	209.5840, -5.7109, 11.7658
Hunter-Lab	79.6416, 0.6089, 9.3118

# Details

The XYZ color **62.4558, 63.4278, 62.3771** is a light color, and the websafe version is hex **CCCCCC**. A complement of this color would be **61.1637, 66.4441, 79.4141**, and the grayscale version is **61.0176, 64.1953, 69.9087**.

A 20% lighter version of the original color is **95.0500, 100.0000, 108.9000**, and **32.2491, 32.4717, 30.9535** is the 20% darker color. If you saturate the color by 10%, you get **56.4261, 55.1858, 48.5975**, and if you desaturate by 10%, it is **69.2617, 72.6149, 78.2854**.

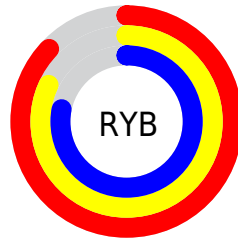
# Distribution



Red (87%)

Green (80%)

Blue (78%)



Red (87%)

Yellow (82%)

Blue (78%)

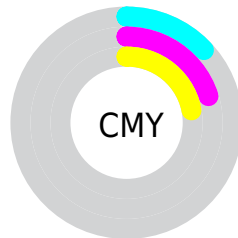


Cyan (0%)

Magenta (8%)

Yellow (11%)

Black (13%)



Cyan (13%)

Magenta (20%)

Yellow (22%)

# Brightness & Saturation Gradients

These gradients show how the XYZ color 62.4558, 63.4278, 62.3771 changes by changing the brightness by 10 percent. The first figure shows a shift by +10% for each color and the second figure -10%.

Similar to the brightness gradients but the following saturation gradients show a change of the XYZ color 62.4558, 63.4278, 62.3771 by changing the saturation by 10% instead.



62.4558, 63.4278,  
62.3771

62.4558, 63.4278,  
62.3771

423.2829,  
437.1204, 451.3509

45.6581, 46.1874,  
44.8997

107.4702,  
109.7865, 109.8472

32.1796, 32.3937,  
31.0361

136.4177,  
139.6735, 140.6771

21.6549, 21.6624,  
20.3676

170.1458,  
174.5449, 176.7948

13.7187, 13.6090,  
12.4758

209.0198,  
214.7849, 218.6190

8.0057, 7.8493,  
6.9422

253.4052,  
260.7781, 266.5681

4.1504, 3.9986,  
3.3480

303.6673,

1.7876, 1.6728,

312.9089, 321.0608

1.2750

360.1714,  
371.5615, 382.5155

■ 0.5102, 0.4060,  
0.0412

■ 0.0000, 0.0000,  
0.0000

■ 62.4558, 63.4278,  
62.3771

■ 62.4558, 63.4278,  
62.3771

■ 56.4261, 55.1858,  
48.5975

■ 69.2617, 72.6149,  
78.2854

■ 51.1392, 47.8502,  
36.8517

■ 76.8655, 82.7675,  
96.4035

■ 46.5665, 41.3920,  
27.0438

■ 83.6585, 93.2617,  
108.1998

■ 42.6760, 35.7773,  
19.0684

■ 84.2418, 94.4281,  
108.3942

■ 39.4328, 30.9702,  
12.8098

■ 36.7985, 26.9318,  
8.1394

■ 34.7305, 23.6198,  
4.9098

■ 33.1794, 20.9870,  
2.9455

■ 32.1803, 19.1853,  
2.0070

# Harmonies

## Analogous

The Analogous color harmony consists of three colors that are next to each other on the color wheel.



63.4022, 63.4278, 66.1863



62.4558, 63.4278, 62.3771



60.9384, 63.4278, 60.3951

# Triad

The Triadic color harmony groups three colors that are evenly spaced from another and form a triangle on the color wheel.



62.4558, 63.4278, 62.3771



57.1787, 63.4278, 67.2175



61.3104, 63.4278, 78.2132

# Complementary

The Complementary color scheme is a pair of colors which are on the opposite of each other on the color wheel.



62.4558, 63.4278, 62.3771



61.1637, 66.4441, 79.4141

# Split Complementary

Split-complementary colors differ from the complementary color scheme. The scheme consists of three colors, the original color and two neighbors of the complement color.



59.6387, 63.4278, 78.5209



62.4558, 63.4278, 62.3771



57.2741, 63.4278, 72.0200

# Square

The Square scheme is like the rectangle color scheme, but the four colors are evenly spaced on the color wheel.



62.4558, 63.4278, 62.3771



57.9044, 63.4278, 63.1018



58.1675, 63.4278, 76.2084



62.7324, 63.4278, 75.3863



# Rectangle

The Rectangle color scheme consists of four colors that form a rectangle on the color wheel.



62.4558, 63.4278, 62.3771



59.8165, 63.4278, 60.3125



58.1675, 63.4278, 76.2084



60.7584, 63.4278, 78.6194

# Sweetspot

The Sweet Spot groups the original color and five complimentary colors.



62.4576, 63.4306, 62.3785



92.1109, 96.0537, 101.9646



63.0642, 61.0522, 73.6531



19.5510, 20.3380, 21.4378



0.0000, 0.0000, 0.0000



20.3446, 21.4041, 23.3091

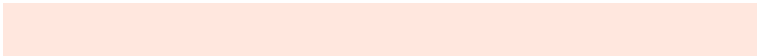


# Same Dimension

The Same Dimension uses a secret algorithm to generate beautiful new colors.



62.4576, 63.4306, 62.3785



83.0190, 83.7545, 80.7925



65.4811, 69.4777, 63.3863



14.0183, 14.3226, 14.3325



19.0038, 11.4455, 1.2076



1.3916, 0.9421, 0.1085

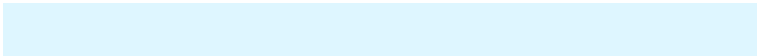


# Inverse Universe

The Inverse Universe completely reimagines the original color for something new.



61.1637, 66.4441, 79.4141



80.9968, 88.4629, 107.4138



58.1621, 60.4409, 78.4136



13.7751, 14.8892, 17.5356



15.3766, 18.2228, 43.7553



1.1402, 1.4119, 3.0577



# Previews

## White Background



This preview shows how the XYZ color 62.4558, 63.4278, 62.3771 looks on a white background.

## Color Contrast Check

Large Text (above 18pt) WCAG AA × Fail

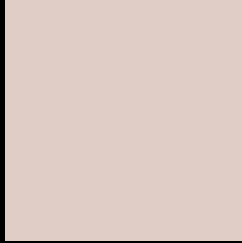
Any Text WCAG AA × Fail

Large Text (above 18pt) WCAG AAA × Fail

Any Text WCAG AAA × Fail



# Black Background



This preview shows how the XYZ color 62.4558, 63.4278, 62.3771 looks on a black background.

## Color Contrast Check

Large Text (above 18pt) WCAG AA ✓ Pass

Any Text WCAG AA ✓ Pass

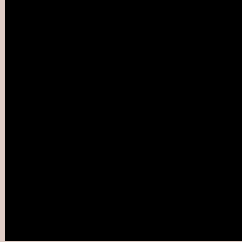
Large Text (above 18pt) WCAG AAA ✓ Pass

Any Text WCAG AAA ✓ Pass

If you want to check with other color combinations, try the [Color Contrast Checker](#).

**XYZ 62.4558, 63.4278, 62.3771**

## **Background**



This preview shows how black text looks on a background with the XYZ color 62.4558, 63.4278, 62.3771.



This preview shows how white text looks on a background with the XYZ color 62.4558, 63.4278,



# Color Blindness Simulation

Color vision deficiency is a very complex topic, and I could not describe the different causes any better than Wikipedia does, so if you want to learn more, you should check out their [article about color blindness](#).

## Dichromacy



### Original Color

62.4558, 63.4278, 62.3771

### Protanopia

60.7128, 63.5780, 63.7155

### Deuteranopia

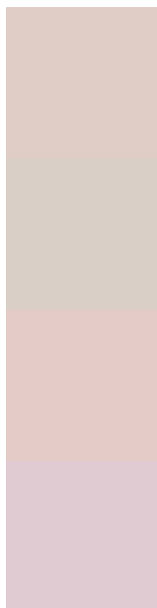
64.7080, 63.5204, 62.8830



## Tritanopia

65.1394, 63.4718, 75.1477

# Trichromacy



## Original Color

62.4558, 63.4278, 62.3771

## Protanomaly

61.2369, 63.5009, 63.0622

## Deuteranomaly

63.9778, 63.4934, 62.9163

## Tritanomaly

64.1651, 63.4226, 70.4879

# Monochromacy



## Original Color

62.4558, 63.4278, 62.3771

## Achromatopsia

61.2578, 64.4480, 70.1838

## Achromatomaly

61.7208, 64.0151, 67.4956

# CSS Examples

## Text

The CSS property to change the color of the text to XYZ 62.4558, 63.4278, 62.3771 is called "color". The color property can be set on classes, ids or directly on the HTML element.

This example shows how text in the color rgb(223, 205, 198) looks like.

```
.text, #text, p{  
    color:rgb(223, 205, 198)  
}
```

If you want to add a text shadow in that color use the text-shadow property, you can generate a text shadow directly with our [CSS Text Shadow Generator](#).

Here you see how black text with a 4 pixel rgb(223, 205, 198) colored shadow looks like.

```
.shadow{ text-shadow: 4px 4px 2px rgb(223, 205, 198) }
```

## Border

The CSS property to change the border of an element to XYZ 62.4558, 63.4278, 62.3771 is called "border". The border property can be set on classes, ids or directly on the HTML element.

This example shows the color as border, it can be applied via the CSS property "border" or "border-color".

```
.border, #border, table{ border:4px solid rgb(223, 205, 198) }
```



If only the border color should be changed use the property `border-color`.

```
.border{ border-color:rgb(223, 205, 198) }
```

If you want to add a box shadow in that color use:

Here you see how a box with a 4 pixel `rgb(223, 205, 198)` colored shadow looks like.

```
.boxshadow{ -moz-box-shadow:4px 4px 4px  
4px rgb(223, 205, 198); -webkit-box-  
shadow:4px 4px 4px 4px rgb(223, 205, 198);  
box-shadow:4px 4px 4px 4px rgb(223, 205,  
198) }
```

# Background

The CSS property to change the background color of an element to XYZ 62.4558, 63.4278, 62.3771 is called "background". The background property can be set on classes, ids or directly on the HTML element.

```
.background, #background, body{  
background: rgb(223, 205, 198) }
```

If only the background color should be changed can be used:

```
.background{ background-color: rgb(223,  
205, 198) }
```

This example shows the color as background, it is applied via the CSS property "background".

To optimize and compress your CSS code, you can use our [online CSS compressor and optimizer](#) based on csstidy. If you want to create a linear or radial gradient as background or border, check our [CSS Gradient Generator](#).

Hey! You found this booklet interesting? Support Converting Colors with the new Membership Option!

The pro membership hides all ads, plus gives you double the colors in the color bucket, and more awesome pro features!

**[Learn more, Memberships starting at \\$2.50/m!](#)**

**Follow me  
on Twitter!**

@ConvertingColor