

Converting Colors

XYZ(62.3852, 62.1629, 67.1728)

Have a look what the booklet for
XYZ(62.3852, 62.1629, 67.1728)
contains.

XYZ(62.3853, 62.2269, 67.1154)	3
<i>Conversions</i>	4
<i>Details</i>	6
<i>Harmonies</i>	12
<i>Previews</i>	24
<i>Color Blindness Simulation</i>	28
<i>CSS Examples</i>	31

Color

**XYZ(62.3853, 62.2269,
67.1154)**

Conversions

Conversions Part 1

Format	Color
Hex	DECACE
RGB	222, 202, 206
RGB Percent	87%, 79%, 81%
CMY	0.1294, 0.2078, 0.1922
CMYK	0.00, 0.09, 0.07, 0.13
HSL	348°, 23%, 83%
HSV	348°, 9%, 87%
XYZ	62.3853, 62.2269, 67.1154
YIQ	208.4360, 10.6360, 5.4840

Conversions

Conversions Part 2

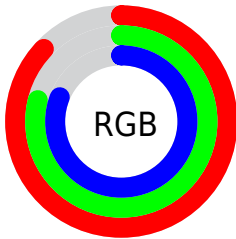
Format	Color
R _Y B	222, 202, 206
Decimal	14600910
CIE Lab	83.03, 7.66, 0.54
CIE LCh	83, 7.677, 4.023
Yxy	62.2269, 0.3254, 0.3246
Android (android.graphics.Color)	4292790990 (0xFFDECAE)
YUV	208.4360, -1.2009, 11.8956
Hunter-Lab	78.8840, 3.1194, 4.7742

Details

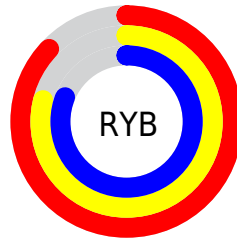
The XYZ color **62.3853, 62.2269, 67.1154** is a light color, and the websafe version is hex **CCCCCC**. A complement of this color would be **63.1357, 69.8626, 76.4904**, and the grayscale version is **60.2414, 63.3786, 69.0193**.

A 20% lighter version of the original color is **95.0500, 100.0000, 108.9000**, and **32.1938, 31.6623, 34.1204** is the 20% darker color. If you saturate the color by 10%, you get **55.5093, 51.7348, 54.7716**, and if you desaturate by 10%, it is **70.2581, 74.3207, 80.9963**.

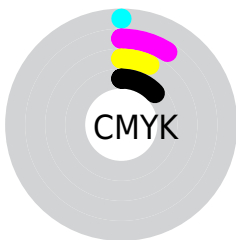
Distribution



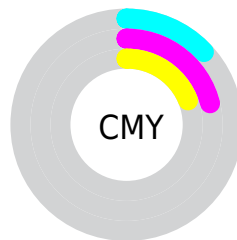
- Red (87%)
- Green (79%)
- Blue (81%)



- Red (87%)
- Yellow (79%)
- Blue (81%)



- Cyan (0%)
- Magenta (9%)
- Yellow (7%)
- Black (13%)



- Cyan (13%)
- Magenta (21%)
- Yellow (19%)

Brightness & Saturation Gradients

These gradients show how the XYZ color 62.3853, 62.2269, 67.1154 changes by changing the brightness by 10 percent. The first figure shows a shift by +10% for each color and the second figure -10%.

Similar to the brightness gradients but the following saturation gradients show a change of the XYZ color 62.3853, 62.2269, 67.1154 by changing the saturation by 10% instead.

62.3853, 62.2269,
67.1154

62.3853, 62.2269,
67.1154

423.0304,
432.7583, 468.8681

45.6009, 45.2161,
48.7162

107.3690,
108.0534, 116.7280

32.1343, 31.6276,
34.0304

136.2990,
137.6378, 148.7784

21.6201, 21.0773,
22.6394

170.0082,
172.1823, 186.2164

13.6931, 13.1805,
14.1247

208.8620,
212.0711, 229.4605

7.9878, 7.5529,
8.0677

253.2258,
257.6888, 278.9292

4.1389, 3.8102,
4.0499

303.4649,

1.7810, 1.5680,

309.4196, 335.0409

1.6528

359.9446,
367.6479, 398.2144

■ 0.5062, 0.3359,
0.3281

■ 0.0000, 0.0000,
0.0000

■ 62.3853, 62.2269,
67.1154

■ 62.3853, 62.2269,
67.1154

■ 55.5093, 51.7348,
54.7716

■ 70.2581, 74.3207,
80.9963

■ 49.5848, 42.7692,
43.9077

■ 79.1601, 88.0708,
96.4608

■ 44.5710, 35.2613,
34.4688

■ 83.9345, 94.2698,
108.3798

■ 40.4220, 29.1336,
26.3950

■ 37.0877, 24.3014,
19.6221

■ 34.5129, 20.6709,
14.0807

■ 32.6352, 18.1353,
9.6946

■ 31.3819, 16.5688,
6.3786

■ 30.6441, 15.7759,
4.0280

Harmonies

Analogous

The Analogous color harmony consists of three colors that are next to each other on the color wheel.



62.0600, 62.2269, 71.8366



62.3853, 62.2269, 67.1154



61.8291, 62.2269, 62.7688

Triad

The Triadic color harmony groups three colors that are evenly spaced from another and form a triangle on the color wheel.



62.3853, 62.2269, 67.1154



57.3773, 62.2269, 60.4591



57.7581, 62.2269, 76.3063

Complementary

The Complementary color scheme is a pair of colors which are on the opposite of each other on the color wheel.



62.3853, 62.2269, 67.1154



63.1357, 69.8626, 76.4904

Split Complementary

Split-complementary colors differ from the complementary color scheme. The scheme consists of three colors, the original color and two neighbors of the complement color.



56.5394, 62.2269, 72.9975



62.3853, 62.2269, 67.1154



56.3224, 62.2269, 63.8300

Square

The Square scheme is like the rectangle color scheme, but the four colors are evenly spaced on the color wheel.



62.3853, 62.2269, 67.1154



58.9212, 62.2269, 59.0412



56.0185, 62.2269, 68.3977



59.3690, 62.2269, 77.2855

Rectangle

The Rectangle color scheme consists of four colors that form a rectangle on the color wheel.



62.3853, 62.2269, 67.1154



61.0392, 62.2269, 60.6249



56.0185, 62.2269, 68.3977



57.2900, 62.2269, 75.4222

Sweetspot

The Sweet Spot groups the original color and five complimentary colors.



62.3871, 62.2296, 67.1167



91.6879, 94.8278, 102.9946



63.2208, 62.4233, 77.8248



19.4373, 20.0086, 21.7144



0.0000, 0.0000, 0.0000



20.3446, 21.4041, 23.3091

Same Dimension

The Same Dimension uses a secret algorithm to generate beautiful new colors.



62.3871, 62.2296, 67.1167



83.3400, 82.0286, 88.1990



63.3427, 64.9080, 65.0704



13.8187, 13.7451, 14.8153



18.1990, 9.3466, 2.4476



1.2933, 0.6606, 0.3374

Inverse Universe

The Inverse Universe completely reimagines the original color for something new.



62.3871, 62.2296, 67.1167



83.3400, 82.0286, 88.1990



62.1000, 66.9442, 78.7565



13.8187, 13.7451, 14.8153



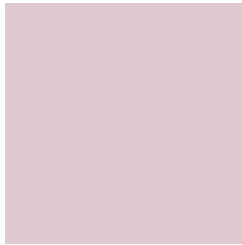
18.1990, 9.3466, 2.4476



1.2933, 0.6606, 0.3374

Previews

White Background



This preview shows how the XYZ color 62.3853, 62.2269, 67.1154 looks on a white background.

Color Contrast Check

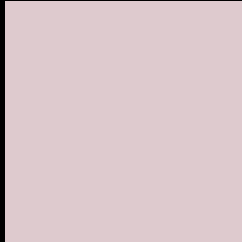
Large Text (above 18pt) WCAG AA × Fail

Any Text WCAG AA × Fail

Large Text (above 18pt) WCAG AAA × Fail

Any Text WCAG AAA × Fail

Black Background



This preview shows how the XYZ color 62.3853, 62.2269, 67.1154 looks on a black background.

Color Contrast Check

Large Text (above 18pt) WCAG AA ✓ Pass

Any Text WCAG AA ✓ Pass

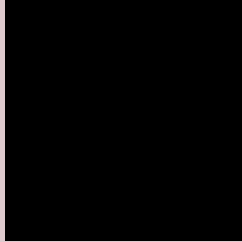
Large Text (above 18pt) WCAG AAA ✓ Pass

Any Text WCAG AAA ✓ Pass

If you want to check with other color combinations, try the [Color Contrast Checker](#).

XYZ 62.3853, 62.2269, 67.1154

Background



This preview shows how black text looks on a background with the XYZ color 62.3853, 62.2269, 67.1154.

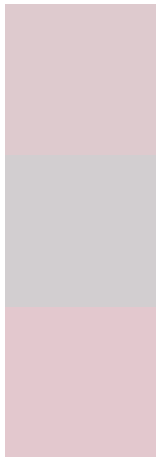


This preview shows how white text looks on a background with the XYZ color 62.3853, 62.2269,

Color Blindness Simulation

Color vision deficiency is a very complex topic, and I could not describe the different causes any better than Wikipedia does, so if you want to learn more, you should check out their [article about color blindness](#).

Dichromacy



Original Color

62.3853, 62.2269, 67.1154

Protanopia

60.0348, 62.3983, 68.5544

Deuteranopia

63.4734, 62.0957, 67.0328



Tritanopia

63.4804, 61.9544, 73.5784

Trichromacy



Original Color

62.3853, 62.2269, 67.1154

Protanomaly

60.8254, 62.4638, 67.8824

Deuteranomaly

63.0786, 62.2371, 67.0809

Tritanomaly

63.2017, 62.2147, 70.9649

Monochromacy



Original Color

62.3853, 62.2269, 67.1154

Achromatopsia

59.9535, 63.0757, 68.6895

Achromatomaly

60.7744, 62.7937, 67.9487

CSS Examples

Text

The CSS property to change the color of the text to XYZ 62.3853, 62.2269, 67.1154 is called "color". The color property can be set on classes, ids or directly on the HTML element.

This example shows how text in the color rgb(222, 202, 206) looks like.

```
.text, #text, p{  
    color:rgb(222, 202, 206)  
}
```

If you want to add a text shadow in that color use the text-shadow property, you can generate a text shadow directly with our [CSS Text Shadow Generator](#).

Here you see how black text with a 4 pixel rgb(222, 202, 206) colored shadow looks like.

```
.shadow{ text-shadow: 4px 4px 2px rgb(222, 202, 206) }
```

Border

The CSS property to change the border of an element to XYZ 62.3853, 62.2269, 67.1154 is called "border". The border property can be set on classes, ids or directly on the HTML element.

This example shows the color as border, it can be applied via the CSS property "border" or "border-color".

```
.border, #border, table{ border:4px solid rgb(222, 202, 206) }
```


If only the border color should be changed use the property `border-color`.

```
.border{ border-color:rgb(222, 202, 206) }
```

If you want to add a box shadow in that color use:

Here you see how a box with a 4 pixel `rgb(222, 202, 206)` colored shadow looks like.

```
.boxshadow{ -moz-box-shadow:4px 4px 4px  
4px rgb(222, 202, 206); -webkit-box-  
shadow:4px 4px 4px 4px rgb(222, 202, 206);  
box-shadow:4px 4px 4px 4px rgb(222, 202,  
206) }
```

Background

The CSS property to change the background color of an element to XYZ 62.3853, 62.2269, 67.1154 is called "background". The background property can be set on classes, ids or directly on the HTML element.

```
.background, #background, body{  
background: rgb(222, 202, 206) }
```

If only the background color should be changed can be used:

```
.background{ background-color: rgb(222,  
202, 206) }
```

This example shows the color as background, it is applied via the CSS property "background".

To optimize and compress your CSS code, you can use our [online CSS compressor and optimizer](#) based on csstidy. If you want to create a linear or radial gradient as background or border, check our [CSS Gradient Generator](#).

Hey! You found this booklet interesting? Support Converting Colors with the new Membership Option!

The pro membership hides all ads, plus gives you double the colors in the color bucket, and more awesome pro features!

[Learn more, Memberships starting at \\$2.50/m!](#)

**Follow me
on Twitter!**

@ConvertingColor