

Converting Colors

XYZ(62.4052, 62.6827, 62.8427)

Have a look what the booklet for
XYZ(62.4052, 62.6827, 62.8427)
contains.

XYZ(62.4052, 62.6827, 62.8427)	3
<i>Conversions</i>	4
<i>Details</i>	6
<i>Harmonies</i>	12
<i>Previews</i>	24
<i>Color Blindness Simulation</i>	28
<i>CSS Examples</i>	31

Color

**XYZ(62.4052, 62.6827,
62.8427)**

Conversions

Conversions Part 1

Format	Color
Hex	E0CBC7
RGB	224, 203, 199
RGB Percent	88%, 80%, 78%
CMY	0.1216, 0.2039, 0.2196
CMYK	0.00, 0.09, 0.11, 0.12
HSL	10°, 29%, 83%
HSV	10°, 11%, 88%
XYZ	62.4052, 62.6827, 62.8427
YIQ	208.8230, 13.8000, 3.2080

Conversions

Conversions Part 2

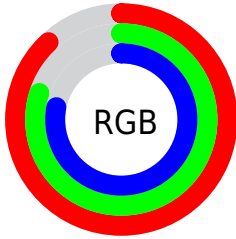
Format	Color
R _Y B	224, 204, 199
Decimal	14732231
CIE Lab	83.28, 6.66, 4.65
CIE LCh	83, 8.124, 34.882
Yxy	62.6827, 0.3321, 0.3335
Android (android.graphics.Color)	4292922311 (0xFFE0CBC7)
YUV	208.8230, -4.8427, 13.3102
Hunter-Lab	79.1724, 2.1454, 8.3595

Details

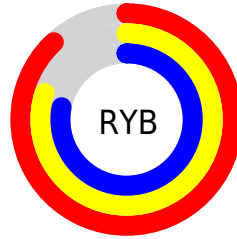
The XYZ color **62.4052, 62.6827, 62.8427** is a light color, and the websafe version is hex **CCCCCC**. A complement of this color would be **62.6006, 68.7089, 80.4844**, and the grayscale version is **60.5147, 63.6662, 69.3325**.

A 20% lighter version of the original color is **95.0500, 100.0000, 108.9000**, and **32.2205, 31.9742, 31.2615** is the 20% darker color. If you saturate the color by 10%, you get **55.8175, 53.3671, 48.7460**, and if you desaturate by 10%, it is **69.9184, 73.2352, 79.1382**.

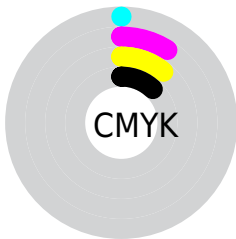
Distribution



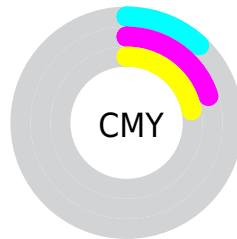
- Red (88%)
- Green (80%)
- Blue (78%)



- Red (88%)
- Yellow (80%)
- Blue (78%)



- Cyan (0%)
- Magenta (9%)
- Yellow (11%)
- Black (12%)



- Cyan (12%)
- Magenta (20%)
- Yellow (22%)

Brightness & Saturation Gradients

These gradients show how the XYZ color 62.4052, 62.6827, 62.8427 changes by changing the brightness by 10 percent. The first figure shows a shift by +10% for each color and the second figure -10%.

Similar to the brightness gradients but the following saturation gradients show a change of the XYZ color 62.4052, 62.6827, 62.8427 by changing the saturation by 10% instead.

■ 62.4052, 62.6827,
62.8427

■ 62.4052, 62.6827,
62.8427

423.1016,
434.4170, 453.0906

■ 45.6170, 45.5846,
45.2738

107.3976,
108.7116, 110.5259

■ 32.1471, 31.9181,
31.3286

136.3325,
138.4112, 141.4773

■ 21.6299, 21.2990,
20.5886

170.0471,
173.0800, 177.7266

■ 13.7003, 13.3427,
12.6353

208.9066,
213.1025, 219.6924

■ 7.9928, 7.6650,
7.0502

253.2764,
258.8631, 267.7931

■ 4.1421, 3.8813,
3.4146

303.5220,

■ 1.7829, 1.6074,

310.7461, 322.4474

1.3100

360.0086,
369.1359, 384.0737

■ 0.5073, 0.3626,
0.0700

■ 0.0000, 0.0000,
0.0000

■ 62.4052, 62.6827,
62.8427

■ 62.4052, 62.6827,
62.8427

■ 55.8175, 53.3671,
48.7460

■ 69.9184, 73.2352,
79.1382

■ 50.1142, 45.2350,
36.7498

■ 78.3857, 85.0590,
97.7168

■ 45.2587, 38.2413,
26.7545

■ 84.5507, 94.5874,
108.4086

■ 41.2101, 32.3349,
18.6507

■ 37.9237, 27.4608,
12.3187

■ 35.3506, 23.5589,
7.6248

■ 33.4358, 20.5631,
4.4162

■ 32.1159, 18.3986,
2.5112

■ 31.3679, 17.1017,
1.6477

Harmonies

Analogous

The Analogous color harmony consists of three colors that are next to each other on the color wheel.



63.0233, 62.6827, 67.4271



62.4052, 62.6827, 62.8427



61.0301, 62.6827, 59.8245

Triad

The Triadic color harmony groups three colors that are evenly spaced from another and form a triangle on the color wheel.



62.4052, 62.6827, 62.8427



56.5582, 62.6827, 64.2082



59.8673, 62.6827, 78.3987

Complementary

The Complementary color scheme is a pair of colors which are on the opposite of each other on the color wheel.



62.4052, 62.6827, 62.8427



62.6006, 68.7089, 80.4844

Split Complementary

Split-complementary colors differ from the complementary color scheme. The scheme consists of three colors, the original color and two neighbors of the complement color.



58.1492, 62.6827, 77.4334



62.4052, 62.6827, 62.8427



56.2606, 62.6827, 69.0812

Square

The Square scheme is like the rectangle color scheme, but the four colors are evenly spaced on the color wheel.



62.4052, 62.6827, 62.8427



57.6585, 62.6827, 60.5852



56.8376, 62.6827, 73.9606



61.5397, 62.6827, 76.5372

Rectangle

The Rectangle color scheme consists of four colors that form a rectangle on the color wheel.



62.4052, 62.6827, 62.8427



59.8813, 62.6827, 59.0219



56.8376, 62.6827, 73.9606



59.2758, 62.6827, 78.3948

Sweetspot

The Sweet Spot groups the original color and five complimentary colors.



62.4069, 62.6855, 62.8440



91.8271, 95.4861, 101.8700



64.1160, 61.8756, 76.4484



19.4746, 20.1854, 21.4123



0.0000, 0.0000, 0.0000



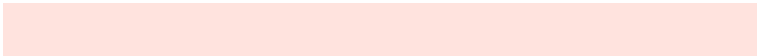
20.3446, 21.4041, 23.3091

Same Dimension

The Same Dimension uses a secret algorithm to generate beautiful new colors.



62.4069, 62.6855, 62.8440



81.9174, 81.5513, 80.4253



65.4141, 68.6999, 63.8464



13.8837, 14.0533, 14.2876



18.3127, 10.0634, 0.9772



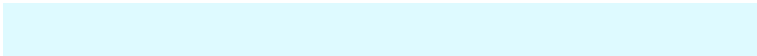
1.3245, 0.8078, 0.0861

Inverse Universe

The Inverse Universe completely reimagines the original color for something new.



62.6006, 68.7089, 80.4844



82.2178, 90.9050, 107.8208



59.5035, 62.5147, 79.4520



13.9199, 15.1789, 17.5838



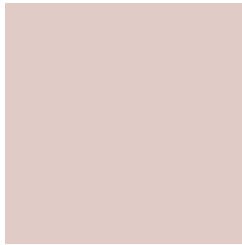
18.3853, 24.2401, 44.7582



1.3251, 1.7817, 3.1193

Previews

White Background



This preview shows how the XYZ color 62.4052, 62.6827, 62.8427 looks on a white background.

Color Contrast Check

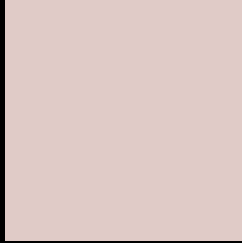
Large Text (above 18pt) WCAG AA × Fail

Any Text WCAG AA × Fail

Large Text (above 18pt) WCAG AAA × Fail

Any Text WCAG AAA × Fail

Black Background



This preview shows how the XYZ color 62.4052, 62.6827, 62.8427 looks on a black background.

Color Contrast Check

Large Text (above 18pt) WCAG AA ✓ Pass

Any Text WCAG AA ✓ Pass

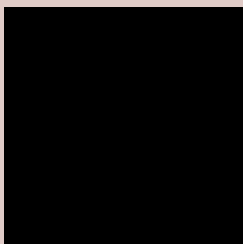
Large Text (above 18pt) WCAG AAA ✓ Pass

Any Text WCAG AAA ✓ Pass

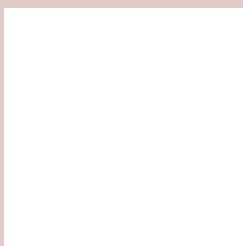
If you want to check with other color combinations, try the [Color Contrast Checker](#).

XYZ 62.4052, 62.6827, 62.8427

Background



This preview shows how black text looks on a background with the XYZ color 62.4052, 62.6827, 62.8427.



This preview shows how white text looks on a background with the XYZ color 62.4052, 62.6827,

Color Blindness Simulation

Color vision deficiency is a very complex topic, and I could not describe the different causes any better than Wikipedia does, so if you want to learn more, you should check out their [article about color blindness](#).

Dichromacy



Original Color

62.4052, 62.6827, 62.8427

Protanopia

60.2960, 62.9888, 64.2385

Deuteranopia

64.1504, 62.8857, 62.7899



Tritanopia

64.4130, 62.4352, 73.6220

Trichromacy



Original Color

62.4052, 62.6827, 62.8427

Protanomaly

61.1119, 63.0645, 63.5953

Deuteranomaly

63.4242, 62.8586, 62.8229

Tritanomaly

63.5708, 62.4340, 69.6732

Monochromacy



Original Color

62.4052, 62.6827, 62.8427

Achromatopsia

60.6036, 63.7597, 69.4343

Achromatomaly

61.0638, 63.3296, 66.7630

CSS Examples

Text

The CSS property to change the color of the text to XYZ 62.4052, 62.6827, 62.8427 is called "color". The color property can be set on classes, ids or directly on the HTML element.

This example shows how text in the color rgb(224, 203, 199) looks like.

```
.text, #text, p{  
    color:rgb(224, 203, 199)  
}
```

If you want to add a text shadow in that color use the text-shadow property, you can generate a text shadow directly with our [CSS Text Shadow Generator](#).

Here you see how black text with a 4 pixel rgb(224, 203, 199) colored shadow looks like.

```
.shadow{ text-shadow: 4px 4px 2px rgb(224, 203, 199) }
```

Border

The CSS property to change the border of an element to XYZ 62.4052, 62.6827, 62.8427 is called "border". The border property can be set on classes, ids or directly on the HTML element.

This example shows the color as border, it can be applied via the CSS property "border" or "border-color".

```
.border, #border, table{ border:4px solid rgb(224, 203, 199) }
```


If only the border color should be changed use the property `border-color`.

```
.border{ border-color:rgb(224, 203, 199) }
```

If you want to add a box shadow in that color use:

Here you see how a box with a 4 pixel `rgb(224, 203, 199)` colored shadow looks like.

```
.boxshadow{ -moz-box-shadow:4px 4px 4px  
4px rgb(224, 203, 199); -webkit-box-  
shadow:4px 4px 4px 4px rgb(224, 203, 199);  
box-shadow:4px 4px 4px 4px rgb(224, 203,  
199) }
```

Background

The CSS property to change the background color of an element to XYZ 62.4052, 62.6827, 62.8427 is called "background". The background property can be set on classes, ids or directly on the HTML element.

```
.background, #background, body{  
background: rgb(224, 203, 199) }
```

If only the background color should be changed can be used:

```
.background{ background-color: rgb(224,  
203, 199) }
```

This example shows the color as background, it is applied via the CSS property "background".

To optimize and compress your CSS code, you can use our [online CSS compressor and optimizer](#) based on csstidy. If you want to create a linear or radial gradient as background or border, check our [CSS Gradient Generator](#).

Hey! You found this booklet interesting? Support Converting Colors with the new Membership Option!

The pro membership hides all ads, plus gives you double the colors in the color bucket, and more awesome pro features!

[Learn more, Memberships starting at \\$2.50/m!](#)

**Follow me
on Twitter!**

@ConvertingColor