

Converting Colors

XYZ(62.4213, 53.3846, 43.5740)

Have a look what the booklet for
XYZ(62.4213, 53.3846, 43.5740)
contains.

| | |
|--|----|
| XYZ(62.2356, 53.1777, 43.5434) | 3 |
| <i>Conversions</i> | 4 |
| <i>Details</i> | 6 |
| <i>Harmonies</i> | 12 |
| <i>Previews</i> | 24 |
| <i>Color Blindness Simulation</i> | 28 |
| <i>CSS Examples</i> | 31 |

Color

**XYZ(62.2356, 53.1777,
43.5434)**

Conversions

Conversions Part 1

| Format | Color |
|---------------|----------------------------|
| Hex | FDACA7 |
| RGB | 253, 172, 167 |
| RGB Percent | 99%, 67%, 65% |
| CMY | 0.0078, 0.3255, 0.3451 |
| CMYK | 0.00, 0.32, 0.34, 0.01 |
| HSL | 3°, 96%, 82% |
| HSV | 3°, 34%, 99% |
| XYZ | 62.2356, 53.1777, 43.5434 |
| YIQ | 195.6490, 49.8810, 15.6170 |

Conversions

Conversions Part 2

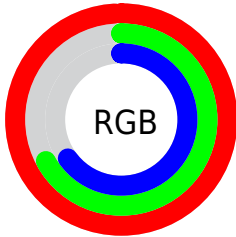
| Format | Color |
|-------------------------------------|--------------------------------|
| R _Y B | 253, 172, 167 |
| Decimal | 16624807 |
| CIE Lab | 77.98, 29.10, 14.68 |
| CIE LCh | 78, 32.590, 26.780 |
| Yxy | 53.1777, 0.3915, 0.3345 |
| Android (android.graphics.Color) | 4294814887 (0xFFFDACA7) |
| YUV | 195.6490, -14.1240, 50.2968 |
| Hunter-Lab | 72.9230, 24.7241, 15.6432 |

Details

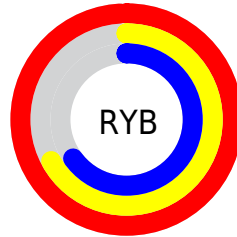
The XYZ color **62.2356, 53.1777, 43.5434** is a light color, and the websafe version is hex **FF9999**. A complement of this color would be **67.2322, 82.4393, 105.2975**, and the grayscale version is **52.3213, 55.0461, 59.9452**.

A 20% lighter version of the original color is **82.1682, 82.0207, 80.6081**, and **31.9395, 25.9008, 19.5356** is the 20% darker color. If you saturate the color by 10%, you get **55.9861, 44.0627, 31.0279**, and if you desaturate by 10%, it is **69.7584, 64.1068, 58.7416**.

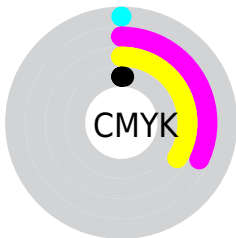
Distribution



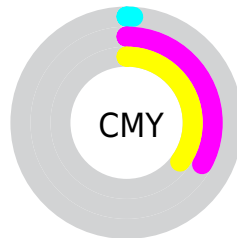
- Red (99%)
- Green (67%)
- Blue (65%)



- Red (99%)
- Yellow (67%)
- Blue (65%)



- Cyan (0%)
- Magenta (32%)
- Yellow (34%)
- Black (1%)



- Cyan (1%)
- Magenta (33%)
- Yellow (35%)

Brightness & Saturation Gradients

These gradients show how the XYZ color 62.2356, 53.1777, 43.5434 changes by changing the brightness by 10 percent. The first figure shows a shift by +10% for each color and the second figure -10%.

Similar to the brightness gradients but the following saturation gradients show a change of the XYZ color 62.2356, 53.1777, 43.5434 by changing the saturation by 10% instead.

62.2356, 53.1777,
43.5434

62.2356, 53.1777,
43.5434

422.4938,
398.9665, 376.8284

45.4794, 37.9446,
29.9772

107.1540, 94.8658,
81.8254

32.0381, 25.9397,
19.5693

136.0469,
122.0896, 107.3782

21.5463, 16.7786,
11.9014

169.7161,
154.0792, 137.7636

13.6386, 10.0767,
6.5549

208.5269,
191.2189, 173.4001

7.9498, 5.4499,
3.1111

252.8448,
233.8930, 214.7063

4.1144, 2.5136,
1.1517

303.0350,

1.7670, 0.8834,

282.4861, 262.1007

0.0000

359.4629,
337.3825, 316.0019

■ 0.4977, 0.0000,
0.0000

■ 0.0000, 0.0000,
0.0000

■ 62.2356, 53.1777,
43.5434

■ 62.2356, 53.1777,
43.5434

■ 55.9861, 44.0627,
31.0279

■ 69.7584, 64.1068,
58.7416

■ 50.9356, 36.6565,
21.0365

■ 78.6153, 76.9327,
76.7625

■ 47.0083, 30.8549,
13.3984

■ 88.8680, 91.7421,
97.7401

■ 44.1183, 26.5390,
7.9209

■ 94.3181, 99.6227,
108.8657

■ 42.1668, 23.5736,
4.3802

■ 41.0361, 21.7985,
2.5042

■ 40.6750, 21.2166,
1.9514

Harmonies

Analogous

The Analogous color harmony consists of three colors that are next to each other on the color wheel.



63.7284, 53.1777, 59.8865



62.2356, 53.1777, 43.5434



57.5262, 53.1777, 33.3157

Triad

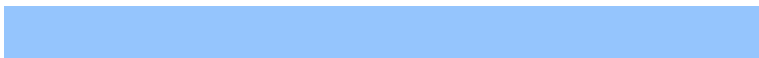
The Triadic color harmony groups three colors that are evenly spaced from another and form a triangle on the color wheel.



62.2356, 53.1777, 43.5434



41.0098, 53.1777, 40.7922



49.8616, 53.1777, 100.2579

Complementary

The Complementary color scheme is a pair of colors which are on the opposite of each other on the color wheel.



62.2356, 53.1777, 43.5434



67.2322, 82.4393, 105.2975

Split Complementary

Split-complementary colors differ from the complementary color scheme. The scheme consists of three colors, the original color and two neighbors of the complement color.



44.1506, 53.1777, 92.3231



62.2356, 53.1777, 43.5434



39.3160, 53.1777, 55.9609

Square

The Square scheme is like the rectangle color scheme, but the four colors are evenly spaced on the color wheel.



62.2356, 53.1777, 43.5434



45.2442, 53.1777, 31.9763



40.4165, 53.1777, 75.1126



56.2419, 53.1777, 95.0278

Rectangle

The Rectangle color scheme consists of four colors that form a rectangle on the color wheel.



62.2356, 53.1777, 43.5434



53.3854, 53.1777, 30.1146



40.4165, 53.1777, 75.1126



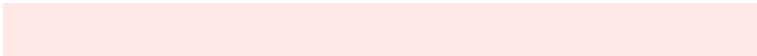
47.8049, 53.1777, 99.0075

Sweetspot

The Sweet Spot groups the original color and five complimentary colors.



62.2370, 53.1803, 43.5445



84.0243, 84.0880, 86.2974



71.3792, 55.3415, 96.2974



17.6781, 17.5553, 17.8445



0.0000, 0.0000, 0.0000



20.3446, 21.4041, 23.3091

Same Dimension

The Same Dimension uses a secret algorithm to generate beautiful new colors.



62.2370, 53.1803, 43.5445



58.7597, 47.4333, 35.1031



71.6060, 71.9182, 46.6674



18.0942, 18.1566, 18.6952



21.6700, 11.3512, 1.0489



2.1384, 1.1622, 0.1116

Inverse Universe

The Inverse Universe completely reimagines the original color for something new.



67.2322, 82.4393, 105.2975



64.5601, 81.4458, 106.9257



55.6656, 59.3062, 101.4420



18.4590, 20.2896, 23.1933



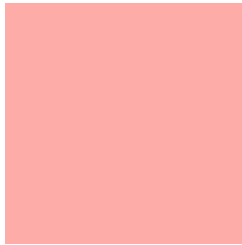
25.7769, 36.4633, 55.1141



2.5363, 3.6032, 5.3751

Previews

White Background



This preview shows how the XYZ color 62.2356, 53.1777, 43.5434 looks on a white background.

Color Contrast Check

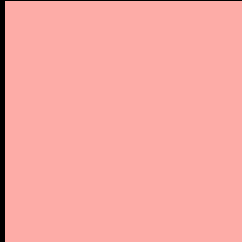
Large Text (above 18pt) WCAG AA × Fail

Any Text WCAG AA × Fail

Large Text (above 18pt) WCAG AAA × Fail

Any Text WCAG AAA × Fail

Black Background



This preview shows how the XYZ color 62.2356, 53.1777, 43.5434 looks on a black background.

Color Contrast Check

Large Text (above 18pt) WCAG AA ✓ Pass

Any Text WCAG AA ✓ Pass

Large Text (above 18pt) WCAG AAA ✓ Pass

Any Text WCAG AAA ✓ Pass

If you want to check with other color combinations, try the [Color Contrast Checker](#).

XYZ 62.2356, 53.1777, 43.5434

Background



This preview shows how black text looks on a background with the XYZ color 62.2356, 53.1777, 43.5434.



This preview shows how white text looks on a background with the XYZ color 62.2356, 53.1777,

43.5434.

Color Blindness Simulation

Color vision deficiency is a very complex topic, and I could not describe the different causes any better than Wikipedia does, so if you want to learn more, you should check out their [article about color blindness](#).

Dichromacy



Original Color

62.2356, 53.1777, 43.5434

Protanopia

50.9253, 53.6336, 49.7878

Deuteranopia

54.3839, 53.3277, 42.5489



Tritanopia

64.0582, 53.3868, 51.1844

Trichromacy



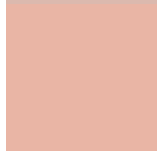
Original Color

62.2356, 53.1777, 43.5434



Protanomaly

54.2024, 52.8140, 47.3817



Deuteranomaly

56.9197, 53.0880, 42.8443



Tritanomaly

63.3718, 53.3710, 48.5565

Monochromacy



Original Color

62.2356, 53.1777, 43.5434



Achromatopsia

52.4687, 55.2011, 60.1140



Achromatomaly

55.1426, 53.7951, 53.3761

CSS Examples

Text

The CSS property to change the color of the text to XYZ 62.2356, 53.1777, 43.5434 is called "color". The color property can be set on classes, ids or directly on the HTML element.

This example shows how text in the color `rgb(253, 172, 167)` looks like.

```
.text, #text, p{  
    color:rgb(253, 172, 167)  
}
```

If you want to add a text shadow in that color use the text-shadow property, you can generate a text shadow directly with our [CSS Text Shadow Generator](#).

Here you see how black text with a 4 pixel rgb(253, 172, 167) colored shadow looks like.

```
.shadow{ text-shadow: 4px 4px 2px rgb(253, 172, 167) }
```

Border

The CSS property to change the border of an element to XYZ 62.2356, 53.1777, 43.5434 is called "border". The border property can be set on classes, ids or directly on the HTML element.

This example shows the color as border, it can be applied via the CSS property "border" or "border-color".

```
.border, #border, table{ border:4px solid rgb(253, 172, 167) }
```


If only the border color should be changed use the property `border-color`.

```
.border{ border-color:rgb(253, 172, 167) }
```

If you want to add a box shadow in that color use:

Here you see how a box with a 4 pixel `rgb(253, 172, 167)` colored shadow looks like.

```
.boxshadow{ -moz-box-shadow:4px 4px 4px  
4px rgb(253, 172, 167); -webkit-box-  
shadow:4px 4px 4px 4px rgb(253, 172, 167);  
box-shadow:4px 4px 4px 4px rgb(253, 172,  
167) }
```

Background

The CSS property to change the background color of an element to XYZ 62.2356, 53.1777, 43.5434 is called "background". The background property can be set on classes, ids or directly on the HTML element.

```
.background, #background, body{  
background: rgb(253, 172, 167) }
```

If only the background color should be changed can be used:

```
.background{ background-color: rgb(253,  
172, 167) }
```

This example shows the color as background, it is applied via the CSS property "background".

To optimize and compress your CSS code, you can use our [online CSS compressor and optimizer](#) based on csstidy. If you want to create a linear or radial gradient as background or border, check our [CSS Gradient Generator](#).

Hey! You found this booklet interesting? Support Converting Colors with the new Membership Option!

The pro membership hides all ads, plus gives you double the colors in the color bucket, and more awesome pro features!

[Learn more, Memberships starting at \\$2.50/m!](#)

**Follow me
on Twitter!**

@ConvertingColor