

Converting Colors

XYZ(62.4337, 60.7396, 64.5329)

Have a look what the booklet for
XYZ(62.4337, 60.7396, 64.5329)
contains.

XYZ(62.3055, 60.5277, 64.2763)	3
<i>Conversions</i>	4
<i>Details</i>	6
<i>Harmonies</i>	12
<i>Previews</i>	24
<i>Color Blindness Simulation</i>	28
<i>CSS Examples</i>	31

Color

**XYZ(62.3055, 60.5277,
64.2763)**

Conversions

Conversions Part 1

Format	Color
Hex	E3C5CA
RGB	227, 197, 202
RGB Percent	89%, 77%, 79%
CMY	0.1098, 0.2274, 0.2078
CMYK	0.00, 0.13, 0.11, 0.11
HSL	350°, 35%, 83%
HSV	350°, 13%, 89%
XYZ	62.3055, 60.5277, 64.2763
YIQ	206.5400, 16.2750, 7.9150

Conversions

Conversions Part 2

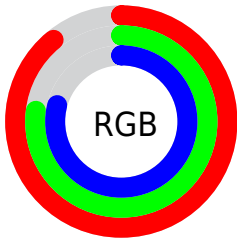
Format	Color
R _Y B	227, 197, 202
Decimal	14927306
CIE Lab	82.12, 11.39, 1.40
CIE LCh	82, 11.480, 7.029
Yxy	60.5277, 0.3330, 0.3235
Android (android.graphics.Color)	4293117386 (0xFFE3C5CA)
YUV	206.5400, -2.2382, 17.9434
Hunter-Lab	77.7996, 6.8019, 5.4756

Details

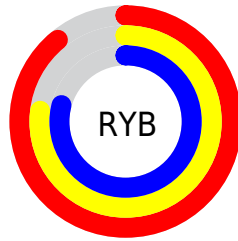
The XYZ color **62.3055, 60.5277, 64.2763** is a light color, and the websafe version is hex **FFCCCC**. A complement of this color would be **63.6822, 72.0840, 79.6680**, and the grayscale version is **59.0204, 62.0941, 67.6205**.

A 20% lighter version of the original color is **94.7318, 99.3636, 108.7939**, and **31.9623, 30.4410, 32.2081** is the 20% darker color. If you saturate the color by 10%, you get **55.4298, 50.1436, 51.6018**, and if you desaturate by 10%, it is **70.2354, 72.5793, 78.6586**.

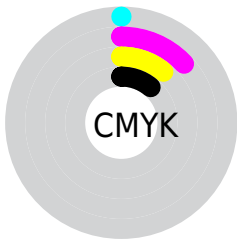
Distribution



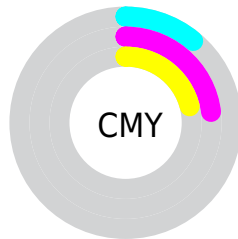
- Red (89%)
- Green (77%)
- Blue (79%)



- Red (89%)
- Yellow (77%)
- Blue (79%)



- Cyan (0%)
- Magenta (13%)
- Yellow (11%)
- Black (11%)



- Cyan (11%)
- Magenta (23%)
- Yellow (21%)

Brightness & Saturation Gradients

These gradients show how the XYZ color 62.3055, 60.5277, 64.2763 changes by changing the brightness by 10 percent. The first figure shows a shift by +10% for each color and the second figure -10%.

Similar to the brightness gradients but the following saturation gradients show a change of the XYZ color 62.3055, 60.5277, 64.2763 by changing the saturation by 10% instead.

62.3055, 60.5277,
64.2763

62.3055, 60.5277,
64.2763

422.7444,
426.5401, 458.4215

45.5361, 43.8441,
46.4269

107.2544,
105.5948, 112.6120

32.0830, 30.5480,
32.2317

136.1646,
134.7471, 143.9355

21.5808, 20.2549,
21.2723

169.8525,
168.8244, 180.5873

13.6640, 12.5805,
13.1300

208.6834,
208.2111, 222.9861

7.9675, 7.1403,
7.3863

253.0227,
253.2917, 271.5503

4.1258, 3.5500,
3.6228

303.2357,

1.7735, 1.4252,

304.4504, 326.6987

1.4208

359.6879,
362.0718, 388.8495

■ 0.5017, 0.2352,
0.1578

■ 0.0000, 0.0000,
0.0000

■ 62.3055, 60.5277,
64.2763

■ 62.3055, 60.5277,
64.2763

■ 55.4298, 50.1436,
51.6018

■ 70.2354, 72.5793,
78.6586

■ 49.5587, 41.3458,
40.5677

■ 79.2563, 86.3588,
94.8051

■ 44.6463, 34.0585,
31.1075

■ 85.4889, 95.0711,
108.4525

■ 40.6409, 28.1962,
23.1490

■ 37.4861, 23.6652,
16.6140

■ 35.1189, 20.3604,
11.4174

■ 33.4672, 18.1607,
7.4643

■ 32.4452, 16.9202,
4.6472

■ 32.0256, 16.4698,
3.3086

Harmonies

Analogous

The Analogous color harmony consists of three colors that are next to each other on the color wheel.



61.9515, 60.5277, 71.2803



62.3055, 60.5277, 64.2763



61.3512, 60.5277, 58.1506

Triad

The Triadic color harmony groups three colors that are evenly spaced from another and form a triangle on the color wheel.



62.3055, 60.5277, 64.2763



54.7545, 60.5277, 55.7635



55.7208, 60.5277, 79.0445

Complementary

The Complementary color scheme is a pair of colors which are on the opposite of each other on the color wheel.



62.3055, 60.5277, 64.2763



63.6822, 72.0840, 79.6680

Split Complementary

Split-complementary colors differ from the complementary color scheme. The scheme consists of three colors, the original color and two neighbors of the complement color.



53.8704, 60.5277, 74.3185



62.3055, 60.5277, 64.2763



53.3236, 60.5277, 60.8058

Square

The Square scheme is like the rectangle color scheme, but the four colors are evenly spaced on the color wheel.



62.3055, 60.5277, 64.2763



56.9584, 60.5277, 53.4656



53.0045, 60.5277, 67.5597



58.1049, 60.5277, 80.1367

Rectangle

The Rectangle color scheme consists of four colors that form a rectangle on the color wheel.



62.3055, 60.5277, 64.2763



60.1170, 60.5277, 55.2775



53.0045, 60.5277, 67.5597



55.0178, 60.5277, 77.8127

Sweetspot

The Sweet Spot groups the original color and five complimentary colors.



62.3072, 60.5304, 64.2776



90.5432, 93.1284, 100.7942



63.9575, 61.0110, 81.0791



19.2041, 19.6654, 21.2567



0.0000, 0.0000, 0.0000



20.3446, 21.4041, 23.3091

Same Dimension

The Same Dimension uses a secret algorithm to generate beautiful new colors.



62.3072, 60.5304, 64.2776



78.3878, 74.6747, 78.6856



64.0713, 64.9901, 61.9940



14.4744, 14.4070, 15.4328



18.7060, 9.6166, 2.0806



1.4118, 0.7224, 0.3090

Inverse Universe

The Inverse Universe completely reimagines the original color for something new.



62.3072, 60.5304, 64.2776



78.3878, 74.6747, 78.6856



61.7062, 67.0442, 82.3623



14.4744, 14.4070, 15.4328



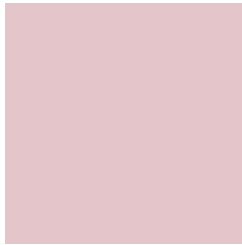
18.7060, 9.6166, 2.0806



1.4118, 0.7224, 0.3090

Previews

White Background



This preview shows how the XYZ color 62.3055, 60.5277, 64.2763 looks on a white background.

Color Contrast Check

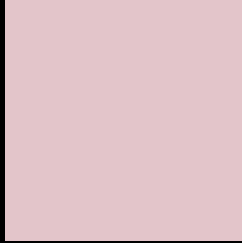
Large Text (above 18pt) WCAG AA × Fail

Any Text WCAG AA × Fail

Large Text (above 18pt) WCAG AAA × Fail

Any Text WCAG AAA × Fail

Black Background



This preview shows how the XYZ color 62.3055, 60.5277, 64.2763 looks on a black background.

Color Contrast Check

Large Text (above 18pt) WCAG AA ✓ Pass

Any Text WCAG AA ✓ Pass

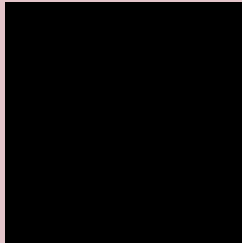
Large Text (above 18pt) WCAG AAA ✓ Pass

Any Text WCAG AAA ✓ Pass

If you want to check with other color combinations, try the [Color Contrast Checker](#).

XYZ 62.3055, 60.5277, 64.2763

Background



This preview shows how black text looks on a background with the XYZ color 62.3055, 60.5277, 64.2763.



This preview shows how white text looks on a background with the XYZ color 62.3055, 60.5277,

64.2763.

Color Blindness Simulation

Color vision deficiency is a very complex topic, and I could not describe the different causes any better than Wikipedia does, so if you want to learn more, you should check out their [article about color blindness](#).

Dichromacy



Original Color

62.3055, 60.5277, 64.2763

Protanopia

58.5089, 60.5780, 67.0015

Deuteranopia

61.9061, 60.6600, 64.3229



Tritanopia

63.4927, 60.6770, 69.9934

Trichromacy



Original Color

62.3055, 60.5277, 64.2763

Protanomaly

59.9304, 60.6281, 66.3013

Deuteranomaly

62.2188, 60.8212, 64.3375

Tritanomaly

63.1200, 60.5279, 68.0308

Monochromacy



Original Color

62.3055, 60.5277, 64.2763

Achromatopsia

59.3074, 62.3960, 67.9493

Achromatomaly

60.1069, 61.4158, 66.4441

CSS Examples

Text

The CSS property to change the color of the text to XYZ 62.3055, 60.5277, 64.2763 is called "color". The color property can be set on classes, ids or directly on the HTML element.

This example shows how text in the color `rgb(227, 197, 202)` looks like.

```
.text, #text, p{  
    color:rgb(227, 197, 202)  
}
```

If you want to add a text shadow in that color use the text-shadow property, you can generate a text shadow directly with our [CSS Text Shadow Generator](#).

Here you see how black text with a 4 pixel rgb(227, 197, 202) colored shadow looks like.

```
.shadow{ text-shadow: 4px 4px 2px rgb(227, 197, 202) }
```

Border

The CSS property to change the border of an element to XYZ 62.3055, 60.5277, 64.2763 is called "border". The border property can be set on classes, ids or directly on the HTML element.

This example shows the color as border, it can be applied via the CSS property "border" or "border-color".

```
.border, #border, table{ border:4px solid rgb(227, 197, 202) }
```


If only the border color should be changed use the property `border-color`.

```
.border{ border-color:rgb(227, 197, 202) }
```

If you want to add a box shadow in that color use:

Here you see how a box with a 4 pixel `rgb(227, 197, 202)` colored shadow looks like.

```
.boxshadow{ -moz-box-shadow:4px 4px 4px 4px rgb(227, 197, 202); -webkit-box-shadow:4px 4px 4px 4px rgb(227, 197, 202); box-shadow:4px 4px 4px 4px rgb(227, 197, 202) }
```

Background

The CSS property to change the background color of an element to XYZ 62.3055, 60.5277, 64.2763 is called "background". The background property can be set on classes, ids or directly on the HTML element.

```
.background, #background, body{  
background: rgb(227, 197, 202) }
```

If only the background color should be changed can be used:

```
.background{ background-color: rgb(227,  
197, 202) }
```

This example shows the color as background, it is applied via the CSS property "background".

To optimize and compress your CSS code, you can use our [online CSS compressor and optimizer](#) based on csstidy. If you want to create a linear or radial gradient as background or border, check our [CSS Gradient Generator](#).

Hey! You found this booklet interesting? Support Converting Colors with the new Membership Option!

The pro membership hides all ads, plus gives you double the colors in the color bucket, and more awesome pro features!

[Learn more, Memberships starting at \\$2.50/m!](#)

**Follow me
on Twitter!**

@ConvertingColor