

Converting Colors

XYZ(62.4921, 64.6507, 60.5582)

Have a look what the booklet for
XYZ(62.4921, 64.6507, 60.5582)
contains.

XYZ(62.5304, 64.5815, 60.7995)	3
<i>Conversions</i>	4
<i>Details</i>	6
<i>Harmonies</i>	12
<i>Previews</i>	24
<i>Color Blindness Simulation</i>	28
<i>CSS Examples</i>	31

Color

**XYZ(62.5304, 64.5815,
60.7995)**

Conversions

Conversions Part 1

Format	Color
Hex	DED0C3
RGB	222, 208, 195
RGB Percent	87%, 82%, 76%
CMY	0.1294, 0.1843, 0.2353
CMYK	0.00, 0.06, 0.12, 0.13
HSL	29°, 29%, 82%
HSV	29°, 12%, 87%
XYZ	62.5304, 64.5815, 60.7995
YIQ	210.7040, 12.5170, -1.0750

Conversions

Conversions Part 2

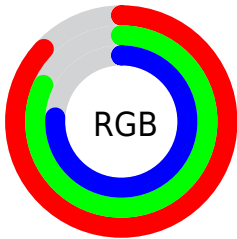
Format	Color
R_{YB}	222, 220, 195
Decimal	14602435
CIE _{Lab}	84.27, 2.68, 8.18
CIE _{LCh}	84, 8.608, 71.883
Yxy	64.5815, 0.3328, 0.3437
Android (android.graphics.Color)	4292792515 (0xFFDED0C3)
YUV	210.7040, -7.7421, 9.9066
Hunter-Lab	80.3626, -1.7432, 11.3971

Details

The XYZ color **62.5304, 64.5815, 60.7995** is a light color, and the websafe version is hex **CCCCCC**. A complement of this color would be **58.4907, 62.4757, 78.0841**, and the grayscale version is **61.7667, 64.9834, 70.7669**.

A 20% lighter version of the original color is **94.5707, 99.8083, 106.3760**, and **32.2997, 33.2498, 29.9148** is the 20% darker color. If you saturate the color by 10%, you get **57.5005, 58.2440, 47.6461**, and if you desaturate by 10%, it is **68.1407, 71.4812, 75.9890**.

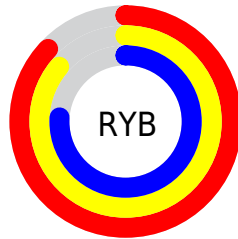
Distribution



Red (87%)

Green (82%)

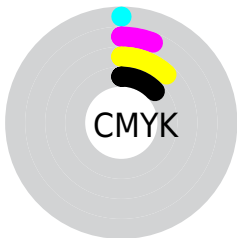
Blue (76%)



Red (87%)

Yellow (86%)

Blue (76%)

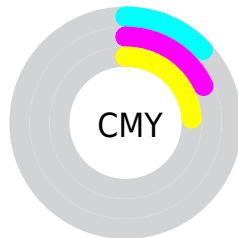


Cyan (0%)

Magenta (6%)

Yellow (12%)

Black (13%)



Cyan (13%)

Magenta (18%)

Yellow (24%)

Brightness & Saturation Gradients

These gradients show how the XYZ color 62.5304, 64.5815, 60.7995 changes by changing the brightness by 10 percent. The first figure shows a shift by +10% for each color and the second figure -10%.

Similar to the brightness gradients but the following saturation gradients show a change of the XYZ color 62.5304, 64.5815, 60.7995 by changing the saturation by 10% instead.

62.5304, 64.5815,
60.7995

62.5304, 64.5815,
60.7995

423.5500,
441.2865, 445.4247

45.7186, 47.1218,
43.6339

107.5774,
111.4480, 107.5433

32.2275, 33.1320,
30.0477

136.5433,
141.6235, 137.9585

21.6917, 22.2276,
19.6224

170.2913,
176.8065, 173.6273

13.7459, 14.0242,
11.9395

209.1867,
217.3813, 214.9683

8.0247, 8.1375,
6.5805

253.5949,
263.7323, 262.4000

4.1627, 4.1831,
3.1267

303.8813,

1.7946, 1.7765,

316.2439, 316.3409

1.1597

360.4112,
375.3005, 377.2096

■ 0.5144, 0.4725,
0.0000

■ 0.0000, 0.0000,
0.0000

■ 62.5304, 64.5815,
60.7995

■ 62.5304, 64.5815,
60.7995

■ 57.5005, 58.2440,
47.6461

■ 68.1407, 71.4812,
75.9890

■ 53.0250, 52.4450,
36.4369

■ 74.3456, 78.9489,
93.2931

■ 49.0835, 47.1714,
27.0788

■ 80.0841, 86.5690,
107.0963

■ 45.6524, 42.4064,
19.4697

■ 83.6277, 93.6562,
108.2775

■ 42.7058, 38.1320,
13.4971

■ 83.9345, 94.2697,
108.3798

■ 40.2153, 34.3289,
9.0354

■ 38.1486, 30.9760,
5.9404

■ 36.4678, 28.0495,
4.0389

■ 35.3743, 26.0294,
3.1597

Harmonies

Analogous

The Analogous color harmony consists of three colors that are next to each other on the color wheel.



64.1542, 64.5815, 63.5358



62.5304, 64.5815, 60.7995



60.6306, 64.5815, 60.5316

Triad

The Triadic color harmony groups three colors that are evenly spaced from another and form a triangle on the color wheel.



62.5304, 64.5815, 60.7995



57.8630, 64.5815, 72.5036



63.8642, 64.5815, 78.4325

Complementary

The Complementary color scheme is a pair of colors which are on the opposite of each other on the color wheel.



62.5304, 64.5815, 60.7995



58.4907, 62.4757, 78.0841

Split Complementary

Split-complementary colors differ from the complementary color scheme. The scheme consists of three colors, the original color and two neighbors of the complement color.



62.1412, 64.5815, 81.1068



62.5304, 64.5815, 60.7995



58.6923, 64.5815, 77.5670

Square

The Square scheme is like the rectangle color scheme, but the four colors are evenly spaced on the color wheel.



62.5304, 64.5815, 60.7995



57.9623, 64.5815, 67.1022



60.2493, 64.5815, 80.7821



64.9353, 64.5815, 73.6355

Rectangle

The Rectangle color scheme consists of four colors that form a rectangle on the color wheel.



62.5304, 64.5815, 60.7995



59.4657, 64.5815, 61.7704



60.2493, 64.5815, 80.7821



63.3406, 64.5815, 79.6204

Sweetspot

The Sweet Spot groups the original color and five complimentary colors.



62.5322, 64.5844, 60.8009



91.7873, 96.0332, 99.9248



61.1983, 59.1840, 68.7805



19.5181, 20.3984, 21.0379



0.0000, 0.0000, 0.0000



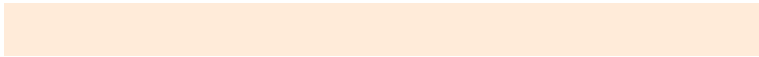
20.3446, 21.4041, 23.3091

Same Dimension

The Same Dimension uses a secret algorithm to generate beautiful new colors.



62.5322, 64.5844, 60.8009



83.4897, 85.7724, 77.6306



65.8580, 71.2361, 61.9095



14.2493, 14.7845, 14.4095



21.1216, 15.6811, 1.9135



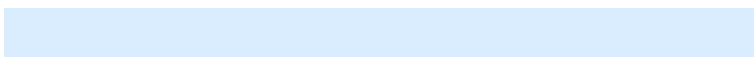
1.5534, 1.2656, 0.1624

Inverse Universe

The Inverse Universe completely reimagines the original color for something new.



58.4907, 62.4757, 78.0841



76.7529, 82.2573, 106.4397



55.4087, 56.3117, 77.0567



13.5368, 14.4128, 17.4562



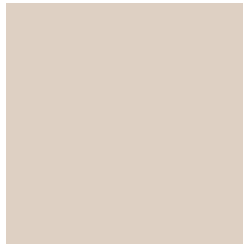
11.5902, 10.6499, 42.4931



0.8929, 0.9173, 2.9752

Previews

White Background



This preview shows how the XYZ color 62.5304, 64.5815, 60.7995 looks on a white background.

Color Contrast Check

Large Text (above 18pt) WCAG AA × Fail

Any Text WCAG AA × Fail

Large Text (above 18pt) WCAG AAA × Fail

Any Text WCAG AAA × Fail

Black Background



This preview shows how the XYZ color 62.5304, 64.5815, 60.7995 looks on a black background.

Color Contrast Check

Large Text (above 18pt) WCAG AA ✓ Pass

Any Text WCAG AA ✓ Pass

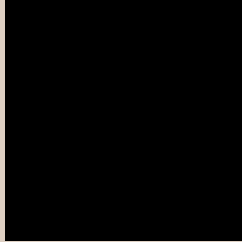
Large Text (above 18pt) WCAG AAA ✓ Pass

Any Text WCAG AAA ✓ Pass

If you want to check with other color combinations, try the [Color Contrast Checker](#).

XYZ 62.5304, 64.5815, 60.7995

Background



This preview shows how black text looks on a background with the XYZ color 62.5304, 64.5815, 60.7995.



This preview shows how white text looks on a background with the XYZ color 62.5304, 64.5815,

Color Blindness Simulation

Color vision deficiency is a very complex topic, and I could not describe the different causes any better than Wikipedia does, so if you want to learn more, you should check out their [article about color blindness](#).

Dichromacy



Original Color

62.5304, 64.5815, 60.7995

Protanopia

61.3795, 64.3382, 61.4080

Deuteranopia

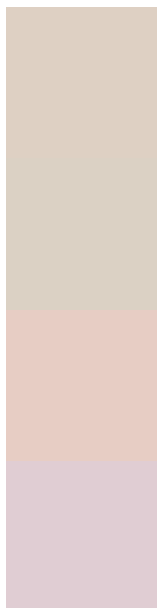
65.9118, 64.5303, 61.2062



Tritanopia

65.5625, 64.3606, 76.6775

Trichromacy



Original Color

62.5304, 64.5815, 60.7995

Protanomaly

61.9777, 64.6465, 61.4360

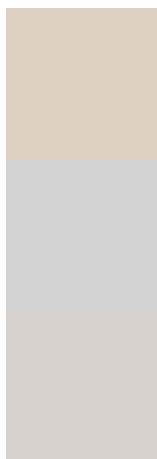
Deuteranomaly

64.7501, 64.6371, 61.2881

Tritanomaly

64.3297, 64.2131, 70.6318

Monochromacy



Original Color

62.5304, 64.5815, 60.7995

Achromatopsia

61.9161, 65.1406, 70.9381

Achromatomaly

62.0904, 64.9480, 67.0213

CSS Examples

Text

The CSS property to change the color of the text to XYZ 62.5304, 64.5815, 60.7995 is called "color". The color property can be set on classes, ids or directly on the HTML element.

This example shows how text in the color rgb(222, 208, 195) looks like.

```
.text, #text, p{  
    color:rgb(222, 208, 195)  
}
```

If you want to add a text shadow in that color use the text-shadow property, you can generate a text shadow directly with our [CSS Text Shadow Generator](#).

Here you see how black text with a 4 pixel rgb(222, 208, 195) colored shadow looks like.

```
.shadow{ text-shadow: 4px 4px 2px rgb(222, 208, 195) }
```

Border

The CSS property to change the border of an element to XYZ 62.5304, 64.5815, 60.7995 is called "border". The border property can be set on classes, ids or directly on the HTML element.

This example shows the color as border, it can be applied via the CSS property "border" or "border-color".

```
.border, #border, table{ border:4px solid rgb(222, 208, 195) }
```


If only the border color should be changed use the property border-color.

```
.border{ border-color:rgb(222, 208, 195) }
```

If you want to add a box shadow in that color use:

Here you see how a box with a 4 pixel rgb(222, 208, 195) colored shadow looks like.

```
.boxshadow{ -moz-box-shadow:4px 4px 4px  
4px rgb(222, 208, 195); -webkit-box-  
shadow:4px 4px 4px 4px rgb(222, 208, 195);  
box-shadow:4px 4px 4px 4px rgb(222, 208,  
195) }
```

Background

The CSS property to change the background color of an element to XYZ 62.5304, 64.5815, 60.7995 is called "background". The background property can be set on classes, ids or directly on the HTML element.

```
.background, #background, body{  
background: rgb(222, 208, 195) }
```

If only the background color should be changed can be used:

```
.background{ background-color: rgb(222,  
208, 195) }
```

This example shows the color as background, it is applied via the CSS property "background".

To optimize and compress your CSS code, you can use our [online CSS compressor and optimizer](#) based on csstidy. If you want to create a linear or radial gradient as background or border, check our [CSS Gradient Generator](#).

Hey! You found this booklet interesting? Support Converting Colors with the new Membership Option!

The pro membership hides all ads, plus gives you double the colors in the color bucket, and more awesome pro features!

[Learn more, Memberships starting at \\$2.50/m!](#)

**Follow me
on Twitter!**

@ConvertingColor