

Converting Colors

XYZ(62.4944, 61.9058, 68.8121)

Have a look what the booklet for
XYZ(62.4944, 61.9058, 68.8121)
contains.

XYZ(62.5195, 61.9063, 68.9756)	3
<i>Conversions</i>	4
<i>Details</i>	6
<i>Harmonies</i>	12
<i>Previews</i>	24
<i>Color Blindness Simulation</i>	28
<i>CSS Examples</i>	31

Color

**XYZ(62.5195, 61.9063,
68.9756)**

Conversions

Conversions Part 1

Format	Color
Hex	DEC9D1
RGB	222, 201, 209
RGB Percent	87%, 79%, 82%
CMY	0.1294, 0.2117, 0.1804
CMYK	0.00, 0.09, 0.06, 0.13
HSL	337°, 24%, 83%
HSV	337°, 9%, 87%
XYZ	62.5195, 61.9063, 68.9756
YIQ	208.1910, 9.9480, 6.9400

Conversions

Conversions Part 2

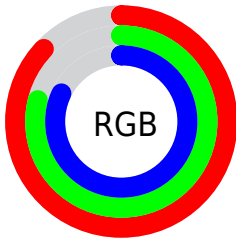
Format	Color
R _Y B	222, 201, 209
Decimal	14600657
CIE Lab	82.86, 8.70, -1.31
CIE LCh	83, 8.802, 351.419
Yxy	61.9063, 0.3233, 0.3201
Android (android.graphics.Color)	4292790737 (0xFFDEC9D1)
YUV	208.1910, 0.3988, 12.1105
Hunter-Lab	78.6806, 4.1450, 3.0996

Details

The XYZ color **62.5195, 61.9063, 68.9756** is a light color, and the websafe version is hex **CCCCCC**. A complement of this color would be **62.3487, 69.5168, 73.7537**, and the grayscale version is **60.0725, 63.2010, 68.8258**.

A 20% lighter version of the original color is **95.0500, 100.0000, 108.9000**, and **32.2865, 31.4495, 35.3790** is the 20% darker color. If you saturate the color by 10%, you get **56.0850, 51.6436, 58.7939**, and if you desaturate by 10%, it is **69.8523, 73.7290, 80.1827**.

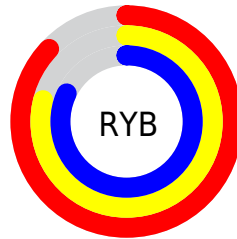
Distribution



Red (87%)

Green (79%)

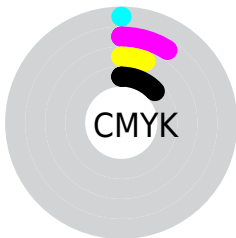
Blue (82%)



Red (87%)

Yellow (79%)

Blue (82%)

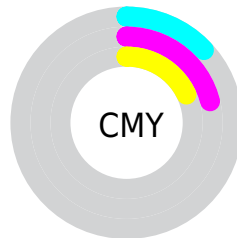


Cyan (0%)

Magenta (9%)

Yellow (6%)

Black (13%)



Cyan (13%)

Magenta (21%)

Yellow (18%)

Brightness & Saturation Gradients

These gradients show how the XYZ color 62.5195, 61.9063, 68.9756 changes by changing the brightness by 10 percent. The first figure shows a shift by +10% for each color and the second figure -10%.

Similar to the brightness gradients but the following saturation gradients show a change of the XYZ color 62.5195, 61.9063, 68.9756 by changing the saturation by 10% instead.

62.5195, 61.9063,
68.9756

62.5195, 61.9063,
68.9756

423.5110,
431.5892, 475.6365

45.7098, 44.9570,
50.2202

107.5617,
107.5901, 119.4141

32.2205, 31.4236,
35.2160

136.5249,
137.0934, 151.9343

21.6864, 20.9216,
23.5444

170.2700,
171.5501, 189.8798

13.7419, 13.0667,
14.7869

209.1623,
211.3447, 233.6692

8.0219, 7.4745,
8.5250

253.5672,
256.8615, 283.7211

4.1609, 3.7606,
4.3402

303.8500,

1.7935, 1.5406,

308.4849, 340.4539

1.8137

360.3762,
366.5993, 404.2862

■ 0.5138, 0.3170,
0.4370

■ 0.0000, 0.0000,
0.0000

■ 62.5195, 61.9063,
68.9756

■ 62.5195, 61.9063,
68.9756

■ 56.0850, 51.6436,
58.7939

■ 69.8523, 73.7290,
80.1827

■ 50.5078, 42.8675,
49.6035

■ 78.1118, 87.1650,
92.4399

■ 45.7518, 35.5105,
41.3741

■ 83.1772, 93.9668,
104.3913

■ 41.7758, 29.4971,
34.0723

■ 83.9346, 94.2698,
108.3798

■ 38.5351, 24.7445,
27.6624

■ 35.9801, 21.1605,
22.1062

■ 34.0547, 18.6404,
17.3622

■ 32.6931, 17.0604,
13.3839

■ 31.7891, 16.2165,
10.1102

Harmonies

Analogous

The Analogous color harmony consists of three colors that are next to each other on the color wheel.



61.7366, 61.9063, 74.1294



62.5195, 61.9063, 68.9756



62.3001, 61.9063, 63.6636

Triad

The Triadic color harmony groups three colors that are evenly spaced from another and form a triangle on the color wheel.



62.5195, 61.9063, 68.9756



57.5186, 61.9063, 58.1443



56.5954, 61.9063, 75.9023

Complementary

The Complementary color scheme is a pair of colors which are on the opposite of each other on the color wheel.



62.5195, 61.9063, 68.9756



62.3487, 69.5168, 73.7537

Split Complementary

Split-complementary colors differ from the complementary color scheme. The scheme consists of three colors, the original color and two neighbors of the complement color.



55.5106, 61.9063, 71.2910



62.5195, 61.9063, 68.9756



56.0356, 61.9063, 61.1009

Square

The Square scheme is like the rectangle color scheme, but the four colors are evenly spaced on the color wheel.



62.5195, 61.9063, 68.9756



59.3858, 61.9063, 57.5984



55.3079, 61.9063, 65.8593



58.2977, 61.9063, 78.2669

Rectangle

The Rectangle color scheme consists of four colors that form a rectangle on the color wheel.



62.5195, 61.9063, 68.9756



61.6169, 61.9063, 60.7307



55.3079, 61.9063, 65.8593



56.1480, 61.9063, 74.5522

Sweetspot

The Sweet Spot groups the original color and five complimentary colors.



62.5213, 61.9090, 68.9769



91.9046, 94.9145, 104.1357



61.7906, 61.3387, 77.6910



19.4956, 20.0319, 22.0215



0.0000, 0.0000, 0.0000



20.3446, 21.4041, 23.3091

Same Dimension

The Same Dimension uses a secret algorithm to generate beautiful new colors.



62.5213, 61.9090, 68.9769



84.0741, 82.3223, 92.0649



62.1313, 62.6740, 64.0841



13.9221, 13.7865, 15.3602



18.9066, 9.6296, 6.1739



1.3532, 0.6845, 0.6526

Inverse Universe

The Inverse Universe completely reimagines the original color for something new.



62.5213, 61.9090, 68.9769



84.0741, 82.3223, 92.0649



62.7495, 68.6437, 79.0505



13.9221, 13.7865, 15.3602



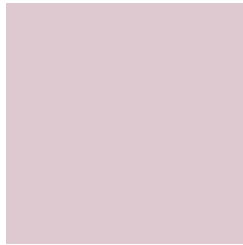
18.9066, 9.6296, 6.1739



1.3532, 0.6845, 0.6526

Previews

White Background



This preview shows how the XYZ color 62.5195, 61.9063, 68.9756 looks on a white background.

Color Contrast Check

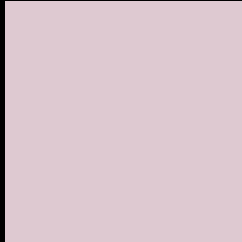
Large Text (above 18pt) WCAG AA × Fail

Any Text WCAG AA × Fail

Large Text (above 18pt) WCAG AAA × Fail

Any Text WCAG AAA × Fail

Black Background



This preview shows how the XYZ color 62.5195, 61.9063, 68.9756 looks on a black background.

Color Contrast Check

Large Text (above 18pt) WCAG AA ✓ Pass

Any Text WCAG AA ✓ Pass

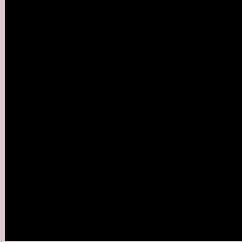
Large Text (above 18pt) WCAG AAA ✓ Pass

Any Text WCAG AAA ✓ Pass

If you want to check with other color combinations, try the [Color Contrast Checker](#).

XYZ 62.5195, 61.9063, 68.9756

Background



This preview shows how black text looks on a background with the XYZ color 62.5195, 61.9063, 68.9756.



This preview shows how white text looks on a background with the XYZ color 62.5195, 61.9063,

Color Blindness Simulation

Color vision deficiency is a very complex topic, and I could not describe the different causes any better than Wikipedia does, so if you want to learn more, you should check out their [article about color blindness](#).

Dichromacy



Original Color

62.5195, 61.9063, 68.9756

Protanopia

60.0095, 61.9714, 71.0862

Deuteranopia

63.2142, 61.9196, 68.9415



Tritanopia

63.4804, 61.9544, 73.5784

Trichromacy



Original Color

62.5195, 61.9063, 68.9756

Protanomaly

61.0823, 62.1850, 70.4115

Deuteranomaly

62.9034, 61.7593, 68.9270

Tritanomaly

63.0959, 61.8006, 71.5540

Monochromacy



Original Color

62.5195, 61.9063, 68.9756

Achromatopsia

59.9535, 63.0757, 68.6895

Achromatomaly

60.6571, 62.3628, 68.5148

CSS Examples

Text

The CSS property to change the color of the text to XYZ 62.5195, 61.9063, 68.9756 is called "color". The color property can be set on classes, ids or directly on the HTML element.

This example shows how text in the color `rgb(222, 201, 209)` looks like.

```
.text, #text, p{  
    color:rgb(222, 201, 209)  
}
```

If you want to add a text shadow in that color use the text-shadow property, you can generate a text shadow directly with our [CSS Text Shadow Generator](#).

Here you see how black text with a 4 pixel rgb(222, 201, 209) colored shadow looks like.

```
.shadow{ text-shadow: 4px 4px 2px rgb(222, 201, 209) }
```

Border

The CSS property to change the border of an element to XYZ 62.5195, 61.9063, 68.9756 is called "border". The border property can be set on classes, ids or directly on the HTML element.

This example shows the color as border, it can be applied via the CSS property "border" or "border-color".

```
.border, #border, table{ border:4px solid rgb(222, 201, 209) }
```


If only the border color should be changed use the property `border-color`.

```
.border{ border-color:rgb(222, 201, 209) }
```

If you want to add a box shadow in that color use:

Here you see how a box with a 4 pixel `rgb(222, 201, 209)` colored shadow looks like.

```
.boxshadow{ -moz-box-shadow:4px 4px 4px  
4px rgb(222, 201, 209); -webkit-box-  
shadow:4px 4px 4px 4px rgb(222, 201, 209);  
box-shadow:4px 4px 4px 4px rgb(222, 201,  
209) }
```

Background

The CSS property to change the background color of an element to XYZ 62.5195, 61.9063, 68.9756 is called "background". The background property can be set on classes, ids or directly on the HTML element.

```
.background, #background, body{  
background: rgb(222, 201, 209) }
```

If only the background color should be changed can be used:

```
.background{ background-color: rgb(222,  
201, 209) }
```

This example shows the color as background, it is applied via the CSS property "background".

To optimize and compress your CSS code, you can use our [online CSS compressor and optimizer](#) based on csstidy. If you want to create a linear or radial gradient as background or border, check our [CSS Gradient Generator](#).

Hey! You found this booklet interesting? Support Converting Colors with the new Membership Option!

The pro membership hides all ads, plus gives you double the colors in the color bucket, and more awesome pro features!

[Learn more, Memberships starting at \\$2.50/m!](#)

**Follow me
on Twitter!**

@ConvertingColor