

Converting Colors

XYZ(62.5306, 61.0323, 60.1636)

Have a look what the booklet for
XYZ(62.5306, 61.0323, 60.1636)
contains.

XYZ(62.6775, 61.1513, 60.1297)	3
<i>Conversions</i>	4
<i>Details</i>	6
<i>Harmonies</i>	12
<i>Previews</i>	24
<i>Color Blindness Simulation</i>	28
<i>CSS Examples</i>	31

Color

**XYZ(62.6775, 61.1513,
60.1297)**

Conversions

Conversions Part 1

Format	Color
Hex	E6C6C3
RGB	230, 198, 195
RGB Percent	90%, 78%, 76%
CMY	0.0980, 0.2235, 0.2353
CMYK	0.00, 0.14, 0.15, 0.10
HSL	5°, 41%, 83%
HSV	5°, 15%, 90%
XYZ	62.6775, 61.1513, 60.1297
YIQ	207.2260, 20.0350, 5.8510

Conversions

Conversions Part 2

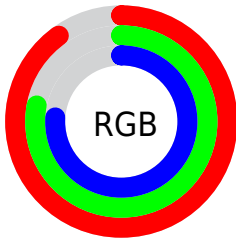
Format	Color
R _Y B	230, 198, 195
Decimal	15124163
CIE Lab	82.46, 10.81, 5.67
CIE LCh	82, 12.207, 27.689
Yxy	61.1513, 0.3407, 0.3324
Android (android.graphics.Color)	4293314243 (0xFFE6C6C3)
YUV	207.2260, -6.0274, 19.9728
Hunter-Lab	78.1993, 6.2207, 9.1497

Details

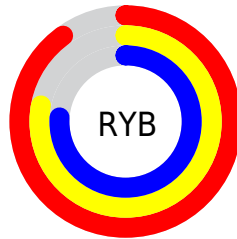
The XYZ color **62.6775, 61.1513, 60.1297** is a light color, and the websafe version is hex **FFCCCC**. A complement of this color would be **64.2572, 72.2517, 85.4226**, and the grayscale version is **59.4838, 62.5816, 68.1514**.

A 20% lighter version of the original color is **94.5707, 99.8083, 106.3760**, and **32.2365, 30.8683, 29.4584** is the 20% darker color. If you saturate the color by 10%, you get **55.7980, 51.2380, 45.9795**, and if you desaturate by 10%, it is **70.6281, 72.5646, 76.6146**.

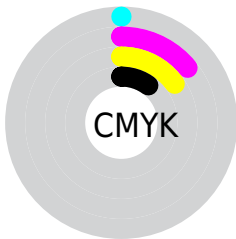
Distribution



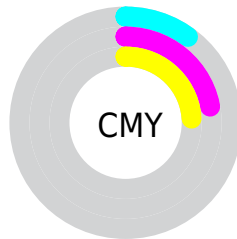
- Red (90%)
- Green (78%)
- Blue (76%)



- Red (90%)
- Yellow (78%)
- Blue (76%)



- Cyan (0%)
- Magenta (14%)
- Yellow (15%)
- Black (10%)



- Cyan (10%)
- Magenta (22%)
- Yellow (24%)

Brightness & Saturation Gradients

These gradients show how the XYZ color 62.6775, 61.1513, 60.1297 changes by changing the brightness by 10 percent. The first figure shows a shift by +10% for each color and the second figure -10%.

Similar to the brightness gradients but the following saturation gradients show a change of the XYZ color 62.6775, 61.1513, 60.1297 by changing the saturation by 10% instead.

62.6775, 61.1513,
60.1297

62.6775, 61.1513,
60.1297

424.0764,
428.8285, 442.8936

45.8380, 44.3473,
43.0972

107.7885,
106.4980, 106.5630

32.3221, 30.9436,
29.6294

136.7908,
135.8094, 136.8009

21.7644, 20.5559,
19.3078

170.5781,
170.0588, 172.2777

13.7995, 12.7998,
11.7139

209.5156,
209.6305, 213.4118

8.0621, 7.2908,
6.4290

253.9689,
254.9090, 260.6220

4.1869, 3.6446,
3.0347

304.3032,

1.8084, 1.4768,

306.2785, 314.3266

1.1124

360.8839,
364.1236, 374.9443

■ 0.5227, 0.2723,
0.0000

■ 0.0000, 0.0000,
0.0000

■ 62.6775, 61.1513,
60.1297

■ 62.6775, 61.1513,
60.1297

■ 55.7980, 51.2380,
45.9795

■ 70.6281, 72.5646,
76.6146

■ 49.9390, 42.7546,
34.0547

■ 79.6877, 85.5280,
95.5289

■ 45.0533, 35.6374,
24.2432

■ 86.4433, 95.5631,
108.4972

■ 41.0879, 29.8150,
16.4216

■ 37.9848, 25.2093,
10.4535

■ 35.6796, 21.7340,
6.1856

■ 34.0983, 19.2910,
3.4398

■ 33.1529, 17.7657,
1.9984

■ 32.8790, 17.3144,
1.6091

Harmonies

Analogous

The Analogous color harmony consists of three colors that are next to each other on the color wheel.



63.2791, 61.1513, 67.1643



62.6775, 61.1513, 60.1297



60.8447, 61.1513, 55.1669

Triad

The Triadic color harmony groups three colors that are evenly spaced from another and form a triangle on the color wheel.



62.6775, 61.1513, 60.1297



53.9860, 61.1513, 59.1972



57.9204, 61.1513, 81.9909

Complementary

The Complementary color scheme is a pair of colors which are on the opposite of each other on the color wheel.



62.6775, 61.1513, 60.1297



64.2572, 72.2517, 85.4226

Split Complementary

Split-complementary colors differ from the complementary color scheme. The scheme consists of three colors, the original color and two neighbors of the complement color.



55.4827, 61.1513, 79.4754



62.6775, 61.1513, 60.1297



53.2539, 61.1513, 66.0058

Square

The Square scheme is like the rectangle color scheme, but the four colors are evenly spaced on the color wheel.



62.6775, 61.1513, 60.1297



55.8230, 61.1513, 54.6574



53.7937, 61.1513, 73.4830



60.4842, 61.1513, 80.1289

Rectangle

The Rectangle color scheme consists of four colors that form a rectangle on the color wheel.



62.6775, 61.1513, 60.1297



59.1984, 61.1513, 53.5131



53.7937, 61.1513, 73.4830



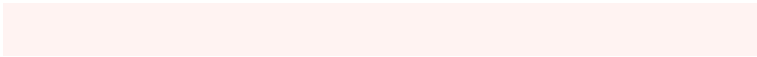
57.0596, 61.1513, 81.6254

Sweetspot

The Sweet Spot groups the original color and five complimentary colors.



62.6792, 61.1540, 60.1310



89.4584, 91.9934, 97.2429



66.0255, 61.4047, 81.1062



18.9857, 19.4581, 20.4767



0.0000, 0.0000, 0.0000



20.3446, 21.4041, 23.3091

Same Dimension

The Same Dimension uses a secret algorithm to generate beautiful new colors.



62.6792, 61.1540, 60.1310



76.5653, 73.4770, 70.5336



66.8907, 69.5771, 61.5348



14.4759, 14.5658, 14.9530



18.6504, 9.8750, 0.9231



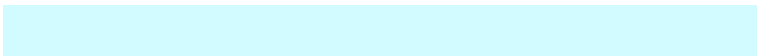
1.4128, 0.7988, 0.0797

Inverse Universe

The Inverse Universe completely reimagines the original color for something new.



64.2572, 72.2517, 85.4226



78.8888, 89.8218, 107.7872



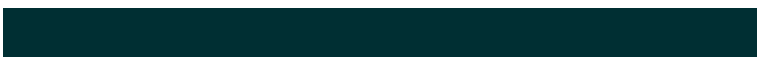
59.7332, 63.2038, 83.9146



14.6961, 16.1136, 18.4800



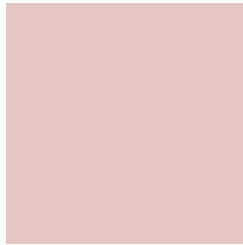
21.2151, 29.4922, 46.9576



1.5990, 2.2420, 3.4804

Previews

White Background



This preview shows how the XYZ color 62.6775, 61.1513, 60.1297 looks on a white background.

Color Contrast Check

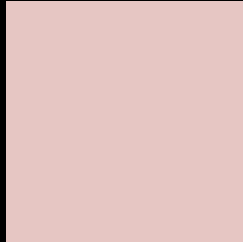
Large Text (above 18pt) WCAG AA × Fail

Any Text WCAG AA × Fail

Large Text (above 18pt) WCAG AAA × Fail

Any Text WCAG AAA × Fail

Black Background



This preview shows how the XYZ color 62.6775, 61.1513, 60.1297 looks on a black background.

Color Contrast Check

Large Text (above 18pt) WCAG AA ✓ Pass

Any Text WCAG AA ✓ Pass

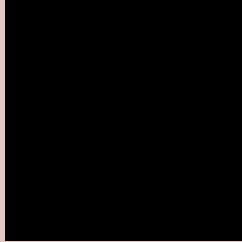
Large Text (above 18pt) WCAG AAA ✓ Pass

Any Text WCAG AAA ✓ Pass

If you want to check with other color combinations, try the [Color Contrast Checker](#).

XYZ 62.6775, 61.1513, 60.1297

Background



This preview shows how black text looks on a background with the XYZ color 62.6775, 61.1513, 60.1297.



This preview shows how white text looks on a background with the XYZ color 62.6775, 61.1513,

Color Blindness Simulation

Color vision deficiency is a very complex topic, and I could not describe the different causes any better than Wikipedia does, so if you want to learn more, you should check out their [article about color blindness](#).

Dichromacy



Original Color

62.6775, 61.1513, 60.1297

Protanopia

58.7656, 61.1581, 62.7402

Deuteranopia

62.3575, 60.9863, 60.1147



Tritanopia

64.7765, 61.3388, 70.0535

Trichromacy



Original Color

62.6775, 61.1513, 60.1297

Protanomaly

60.2270, 61.2237, 62.0691

Deuteranomaly

62.3575, 60.9863, 60.1147

Tritanomaly

63.9407, 61.3292, 66.2253

Monochromacy



Original Color

62.6775, 61.1513, 60.1297

Achromatopsia

59.3074, 62.3960, 67.9493

Achromatomaly

60.3967, 61.9446, 65.2732

CSS Examples

Text

The CSS property to change the color of the text to XYZ 62.6775, 61.1513, 60.1297 is called "color". The color property can be set on classes, ids or directly on the HTML element.

This example shows how text in the color `rgb(230, 198, 195)` looks like.

```
.text, #text, p{  
    color:rgb(230, 198, 195)  
}
```

If you want to add a text shadow in that color use the text-shadow property, you can generate a text shadow directly with our [CSS Text Shadow Generator](#).

Here you see how black text with a 4 pixel rgb(230, 198, 195) colored shadow looks like.

```
.shadow{ text-shadow: 4px 4px 2px rgb(230, 198, 195) }
```

Border

The CSS property to change the border of an element to XYZ 62.6775, 61.1513, 60.1297 is called "border". The border property can be set on classes, ids or directly on the HTML element.

This example shows the color as border, it can be applied via the CSS property "border" or "border-color".

```
.border, #border, table{ border:4px solid rgb(230, 198, 195) }
```


If only the border color should be changed use the property `border-color`.

```
.border{ border-color:rgb(230, 198, 195) }
```

If you want to add a box shadow in that color use:

Here you see how a box with a 4 pixel `rgb(230, 198, 195)` colored shadow looks like.

```
.boxshadow{ -moz-box-shadow:4px 4px 4px 4px rgb(230, 198, 195); -webkit-box-shadow:4px 4px 4px 4px rgb(230, 198, 195); box-shadow:4px 4px 4px 4px rgb(230, 198, 195) }
```

Background

The CSS property to change the background color of an element to XYZ 62.6775, 61.1513, 60.1297 is called "background". The background property can be set on classes, ids or directly on the HTML element.

```
.background, #background, body{  
background: rgb(230, 198, 195) }
```

If only the background color should be changed can be used:

```
.background{ background-color: rgb(230,  
198, 195) }
```

This example shows the color as background, it is applied via the CSS property "background".

To optimize and compress your CSS code, you can use our [online CSS compressor and optimizer](#) based on csstidy. If you want to create a linear or radial gradient as background or border, check our [CSS Gradient Generator](#).

Hey! You found this booklet interesting? Support Converting Colors with the new Membership Option!

The pro membership hides all ads, plus gives you double the colors in the color bucket, and more awesome pro features!

[Learn more, Memberships starting at \\$2.50/m!](#)

**Follow me
on Twitter!**

@ConvertingColor