

Converting Colors

XYZ(62.5722, 63.2393, 68.2600)

Have a look what the booklet for
XYZ(62.5722, 63.2393, 68.2600)
contains.

XYZ(62.6090, 63.3833, 67.9658)	3
<i>Conversions</i>	4
<i>Details</i>	6
<i>Harmonies</i>	12
<i>Previews</i>	24
<i>Color Blindness Simulation</i>	28
<i>CSS Examples</i>	31

Color

**XYZ(62.6090, 63.3833,
67.9658)**

Conversions

Conversions Part 1

Format	Color
Hex	DCCDCF
RGB	220, 205, 207
RGB Percent	86%, 80%, 81%
CMY	0.1373, 0.1961, 0.1882
CMYK	0.00, 0.07, 0.06, 0.14
HSL	352°, 18%, 83%
HSV	352°, 7%, 86%
XYZ	62.6090, 63.3833, 67.9658
YIQ	209.7130, 8.2980, 3.8020

Conversions

Conversions Part 2

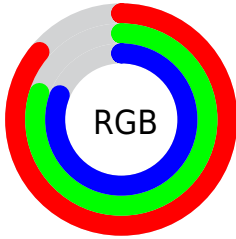
Format	Color
R _Y B	220, 205, 207
Decimal	14470607
CIE Lab	83.64, 5.55, 0.87
CIE LCh	84, 5.617, 8.951
Yxy	63.3833, 0.3228, 0.3268
Android (android.graphics.Color)	4292660687 (0xFFDCCDCF)
YUV	209.7130, -1.3375, 9.0217
Hunter-Lab	79.6136, 1.0504, 5.1139

Details

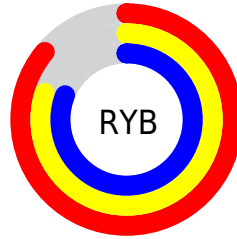
The XYZ color **62.6090, 63.3833, 67.9658** is a light color, and the websafe version is hex **CCCCCC**. A complement of this color would be **63.4273, 69.2291, 76.3527**, and the grayscale version is **61.0766, 64.2573, 69.9762**.

A 20% lighter version of the original color is **95.0500, 100.0000, 108.9000**, and **32.3334, 32.4325, 34.6929** is the 20% darker color. If you saturate the color by 10%, you get **55.5196, 52.7127, 54.7856**, and if you desaturate by 10%, it is **70.7236, 75.6520, 82.8789**.

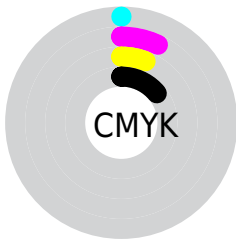
Distribution



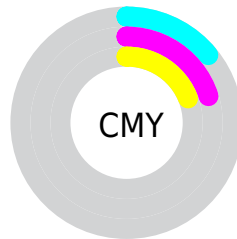
- Red (86%)
- Green (80%)
- Blue (81%)



- Red (86%)
- Yellow (80%)
- Blue (81%)



- Cyan (0%)
- Magenta (7%)
- Yellow (6%)
- Black (14%)



- Cyan (14%)
- Magenta (20%)
- Yellow (19%)

Brightness & Saturation Gradients

These gradients show how the XYZ color 62.6090, 63.3833, 67.9658 changes by changing the brightness by 10 percent. The first figure shows a shift by +10% for each color and the second figure -10%.

Similar to the brightness gradients but the following saturation gradients show a change of the XYZ color 62.6090, 63.3833, 67.9658 by changing the saturation by 10% instead.

■ 62.6090, 63.3833,
67.9658

■ 62.6090, 63.3833,
67.9658

423.8313,
436.9592, 471.9696

■ 45.7824, 46.1514,
49.4034

107.6902,
109.7223, 117.9570

■ 32.2781, 32.3653,
34.5717

136.6755,
139.5982, 150.2228

■ 21.7305, 21.6407,
23.0523

170.4445,
174.4575, 187.8936

■ 13.7745, 13.5931,
14.4264

209.3625,
214.6846, 231.3877

■ 8.0447, 7.8382,
8.2757

253.7948,
260.6639, 281.1239

■ 4.1756, 3.9916,
4.1816

304.1068,

■ 1.8019, 1.6689,

312.7799, 337.5206

1.7255

360.6638,
371.4169, 400.9963

■ 0.5188, 0.4034,
0.3781

■ 0.0000, 0.0000,
0.0000

■ 62.6090, 63.3833,
67.9658

■ 62.6090, 63.3833,
67.9658

■ 55.5196, 52.7127,
54.7856

■ 70.7236, 75.6520,
82.8789

■ 49.4094, 43.5666,
43.2713

■ 79.8965, 89.5720,
99.5803

■ 44.2367, 35.8776,
33.3576

■ 83.3255, 93.9558,
108.3513

■ 39.9548, 29.5705,
24.9733

■ 36.5130, 24.5630,
18.0419

■ 33.8552, 20.7643,
12.4801

■ 31.9188, 18.0716,
8.1963

■ 30.6310, 16.3651,
5.0873

■ 29.9003, 15.4913,
3.0322

Harmonies

Analogous

The Analogous color harmony consists of three colors that are next to each other on the color wheel.



62.4768, 63.3833, 71.4735



62.6090, 63.3833, 67.9658



62.1008, 63.3833, 64.8451

Triad

The Triadic color harmony groups three colors that are evenly spaced from another and form a triangle on the color wheel.



62.6090, 63.3833, 67.9658



58.7702, 63.3833, 63.8821



59.3990, 63.3833, 75.5258

Complementary

The Complementary color scheme is a pair of colors which are on the opposite of each other on the color wheel.



62.6090, 63.3833, 67.9658



63.4273, 69.2291, 76.3527

Split Complementary

Split-complementary colors differ from the complementary color scheme. The scheme consists of three colors, the original color and two neighbors of the complement color.



58.4244, 63.3833, 73.3571



62.6090, 63.3833, 67.9658



58.0649, 63.3833, 66.6108

Square

The Square scheme is like the rectangle color scheme, but the four colors are evenly spaced on the color wheel.



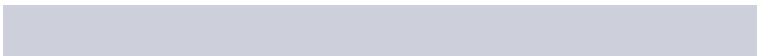
62.6090, 63.3833, 67.9658



59.8769, 63.3833, 62.5406



57.9392, 63.3833, 70.0722



60.6124, 63.3833, 75.9186

Rectangle

The Rectangle color scheme consists of four colors that form a rectangle on the color wheel.



62.6090, 63.3833, 67.9658



61.4712, 63.3833, 63.3753



57.9392, 63.3833, 70.0722



59.0331, 63.3833, 74.9768

Sweetspot

The Sweet Spot groups the original color and five complimentary colors.



62.6108, 63.3861, 67.9672



92.7408, 96.5076, 104.6590



63.6650, 63.7382, 76.6581



19.8745, 20.6932, 22.4458



0.0000, 0.0000, 0.0000



20.3446, 21.4041, 23.3091

Same Dimension

The Same Dimension uses a secret algorithm to generate beautiful new colors.



62.6108, 63.3861, 67.9672



86.1661, 86.5807, 92.5329



63.7068, 65.9662, 67.1360



13.1262, 13.0796, 13.9261



17.4776, 8.9921, 1.6293



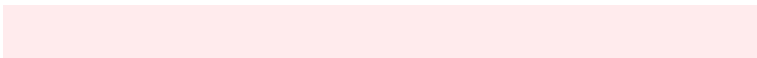
1.1557, 0.5919, 0.2288

Inverse Universe

The Inverse Universe completely reimagines the original color for something new.



62.6108, 63.3861, 67.9672



86.1661, 86.5807, 92.5329



62.2707, 66.4952, 77.2638



13.1262, 13.0796, 13.9261



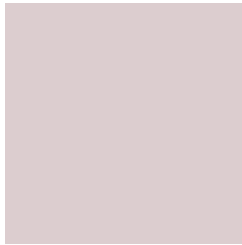
17.4776, 8.9921, 1.6293



1.1557, 0.5919, 0.2288

Previews

White Background



This preview shows how the XYZ color 62.6090, 63.3833, 67.9658 looks on a white background.

Color Contrast Check

Large Text (above 18pt) WCAG AA × Fail

Any Text WCAG AA × Fail

Large Text (above 18pt) WCAG AAA × Fail

Any Text WCAG AAA × Fail

Black Background



This preview shows how the XYZ color 62.6090, 63.3833, 67.9658 looks on a black background.

Color Contrast Check

Large Text (above 18pt) WCAG AA ✓ Pass

Any Text WCAG AA ✓ Pass

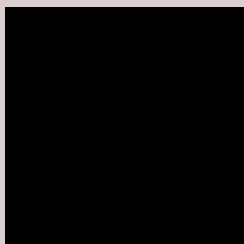
Large Text (above 18pt) WCAG AAA ✓ Pass

Any Text WCAG AAA ✓ Pass

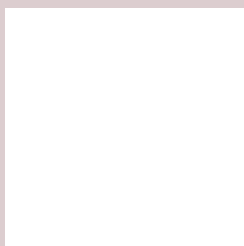
If you want to check with other color combinations, try the [Color Contrast Checker](#).

XYZ 62.6090, 63.3833, 67.9658

Background



This preview shows how black text looks on a background with the XYZ color 62.6090, 63.3833, 67.9658.



This preview shows how white text looks on a background with the XYZ color 62.6090, 63.3833,

67.9658.

Color Blindness Simulation

Color vision deficiency is a very complex topic, and I could not describe the different causes any better than Wikipedia does, so if you want to learn more, you should check out their [article about color blindness](#).

Dichromacy



Original Color

62.6090, 63.3833, 67.9658

Protanopia

60.8494, 63.1768, 68.6617

Deuteranopia

64.8188, 63.4531, 68.5059



Tritanopia

64.2663, 63.3559, 75.8596

Trichromacy



Original Color

62.6090, 63.3833, 67.9658

Protanomaly

61.4808, 63.1438, 68.6221

Deuteranomaly

64.1051, 63.4347, 68.5399

Tritanomaly

63.6774, 63.4642, 73.1836

Monochromacy



Original Color

62.6090, 63.3833, 67.9658

Achromatopsia

61.2578, 64.4480, 70.1838

Achromatomaly

61.7961, 64.0113, 69.4200

CSS Examples

Text

The CSS property to change the color of the text to XYZ 62.6090, 63.3833, 67.9658 is called "color". The color property can be set on classes, ids or directly on the HTML element.

This example shows how text in the color rgb(220, 205, 207) looks like.

```
.text, #text, p{  
    color:rgb(220, 205, 207)  
}
```

If you want to add a text shadow in that color use the text-shadow property, you can generate a text shadow directly with our [CSS Text Shadow Generator](#).

Here you see how black text with a 4 pixel rgb(220, 205, 207) colored shadow looks like.

```
.shadow{ text-shadow: 4px 4px 2px rgb(220, 205, 207) }
```

Border

The CSS property to change the border of an element to XYZ 62.6090, 63.3833, 67.9658 is called "border". The border property can be set on classes, ids or directly on the HTML element.

This example shows the color as border, it can be applied via the CSS property "border" or "border-color".

```
.border, #border, table{ border:4px solid rgb(220, 205, 207) }
```


If only the border color should be changed use the property `border-color`.

```
.border{ border-color:rgb(220, 205, 207) }
```

If you want to add a box shadow in that color use:

Here you see how a box with a 4 pixel `rgb(220, 205, 207)` colored shadow looks like.

```
.boxshadow{ -moz-box-shadow:4px 4px 4px 4px rgb(220, 205, 207); -webkit-box-shadow:4px 4px 4px 4px rgb(220, 205, 207); box-shadow:4px 4px 4px 4px rgb(220, 205, 207) }
```

Background

The CSS property to change the background color of an element to XYZ 62.6090, 63.3833, 67.9658 is called "background". The background property can be set on classes, ids or directly on the HTML element.

```
.background, #background, body{  
background: rgb(220, 205, 207) }
```

If only the background color should be changed can be used:

```
.background{ background-color: rgb(220,  
205, 207) }
```

This example shows the color as background, it is applied via the CSS property "background".

To optimize and compress your CSS code, you can use our [online CSS compressor and optimizer](#) based on csstidy. If you want to create a linear or radial gradient as background or border, check our [CSS Gradient Generator](#).

Hey! You found this booklet interesting? Support Converting Colors with the new Membership Option!

The pro membership hides all ads, plus gives you double the colors in the color bucket, and more awesome pro features!

[Learn more, Memberships starting at \\$2.50/m!](#)

**Follow me
on Twitter!**

@ConvertingColor