

Converting Colors

XYZ(62.6245, 64.2908, 64.4537)

Have a look what the booklet for
XYZ(62.6245, 64.2908, 64.4537)
contains.

XYZ(62.6742, 64.2148, 64.3498)	3
<i>Conversions</i>	4
<i>Details</i>	6
<i>Harmonies</i>	12
<i>Previews</i>	24
<i>Color Blindness Simulation</i>	28
<i>CSS Examples</i>	31

Color

**XYZ(62.6742, 64.2148,
64.3498)**

Conversions

Conversions Part 1

Format	Color
Hex	DDCFC9
RGB	221, 207, 201
RGB Percent	87%, 81%, 79%
CMY	0.1333, 0.1882, 0.2118
CMYK	0.00, 0.06, 0.09, 0.13
HSL	18°, 23%, 83%
HSV	18°, 9%, 87%
XYZ	62.6742, 64.2148, 64.3498
YIQ	210.5020, 10.2700, 1.1020

Conversions

Conversions Part 2

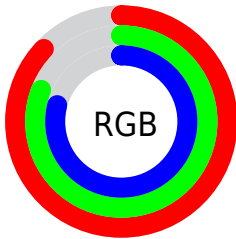
Format	Color
R _Y B	221, 210, 201
Decimal	14536649
CIE Lab	84.08, 3.83, 4.71
CIE LCh	84, 6.069, 50.879
Yxy	64.2148, 0.3277, 0.3358
Android (android.graphics.Color)	4292726729 (0xFFDDCFC9)
YUV	210.5020, -4.6845, 9.2067
Hunter-Lab	80.1341, -0.6270, 8.4825

Details

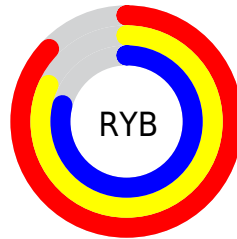
The XYZ color **62.6742, 64.2148, 64.3498** is a light color, and the websafe version is hex **CCCCCC**. A complement of this color would be **61.4388, 66.2377, 77.9543**, and the grayscale version is **61.6151, 64.8239, 70.5932**.

A 20% lighter version of the original color is **95.0500, 100.0000, 108.9000**, and **32.3836, 32.9960, 32.2658** is the 20% darker color. If you saturate the color by 10%, you get **56.6945, 56.1203, 50.4398**, and if you desaturate by 10%, it is **69.3986, 73.1986, 80.3550**.

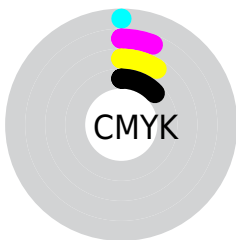
Distribution



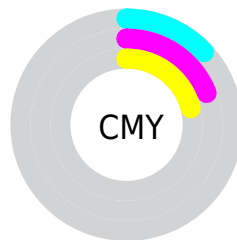
- Red (87%)
- Green (81%)
- Blue (79%)



- Red (87%)
- Yellow (82%)
- Blue (79%)



- Cyan (0%)
- Magenta (6%)
- Yellow (9%)
- Black (13%)



- Cyan (13%)
- Magenta (19%)
- Yellow (21%)

Brightness & Saturation Gradients

These gradients show how the XYZ color 62.6742, 64.2148, 64.3498 changes by changing the brightness by 10 percent. The first figure shows a shift by +10% for each color and the second figure -10%.

Similar to the brightness gradients but the following saturation gradients show a change of the XYZ color 62.6742, 64.2148, 64.3498 by changing the saturation by 10% instead.

■ 62.6742, 64.2148,
64.3498

■ 62.6742, 64.2148,
64.3498

424.0646,
439.9649, 458.6938

■ 45.8353, 46.8247,
46.4861

107.7838,
110.9202, 112.7189

■ 32.3200, 32.8971,
32.2781

136.7853,
141.0043, 144.0613

■ 21.7628, 22.0476,
21.3074

170.5716,
176.0885, 180.7336

■ 13.7983, 13.8919,
13.1555

209.5083,
216.5572, 223.1545

■ 8.0613, 8.0455,
7.4037

253.9605,
262.7948, 271.7424

■ 4.1863, 4.1241,
3.6336

304.2938,

■ 1.8081, 1.7432,

315.1857, 326.9159

1.4266

360.8733,
374.1143, 389.0935

■ 0.5225, 0.4514,
0.1623

■ 0.0000, 0.0000,
0.0000

■ 62.6742, 64.2148,
64.3498

■ 62.6742, 64.2148,
64.3498

■ 56.6945, 56.1203,
50.4398

■ 69.3986, 73.1986,
80.3550

■ 51.4277, 48.8794,
38.5336

■ 76.8875, 83.0895,
98.5333

■ 46.8477, 42.4661,
28.5392

■ 83.1216, 93.0973,
108.1964

■ 42.9244, 36.8499,
20.3557

■ 83.6291, 94.1123,
108.3655

■ 39.6256, 31.9983,
13.8729

■ 36.9158, 27.8768,
8.9683

■ 34.7559, 24.4473,
5.5029

■ 33.1007, 21.6684,
3.3130

■ 31.8864, 19.4886,
2.1414

Harmonies

Analogous

The Analogous color harmony consists of three colors that are next to each other on the color wheel.



63.4731, 64.2148, 67.3223



62.6742, 64.2148, 64.3498



61.4435, 64.2148, 62.8843

Triad

The Triadic color harmony groups three colors that are evenly spaced from another and form a triangle on the color wheel.



62.6742, 64.2148, 64.3498



58.5258, 64.2148, 68.7559



61.9570, 64.2148, 77.0416

Complementary

The Complementary color scheme is a pair of colors which are on the opposite of each other on the color wheel.



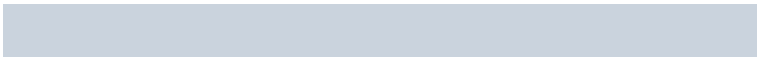
62.6742, 64.2148, 64.3498



61.4388, 66.2377, 77.9543

Split Complementary

Split-complementary colors differ from the complementary color scheme. The scheme consists of three colors, the original color and two neighbors of the complement color.



60.6268, 64.2148, 77.4597



62.6742, 64.2148, 64.3498



58.6587, 64.2148, 72.5816

Square

The Square scheme is like the rectangle color scheme, but the four colors are evenly spaced on the color wheel.



62.6742, 64.2148, 64.3498



59.0573, 64.2148, 65.3663



59.4231, 64.2148, 75.8006



63.0548, 64.2148, 74.6784

Rectangle

The Rectangle color scheme consists of four colors that form a rectangle on the color wheel.



62.6742, 64.2148, 64.3498



60.5493, 64.2148, 62.9209



59.4231, 64.2148, 75.8006



61.5217, 64.2148, 77.4176

Sweetspot

The Sweet Spot groups the original color and five complimentary colors.



62.6760, 64.2176, 64.3512



92.1584, 96.1487, 101.9804



62.9720, 62.0527, 72.9491



19.5638, 20.3636, 21.4420



0.0000, 0.0000, 0.0000



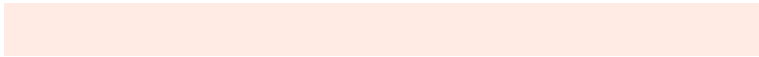
20.3446, 21.4041, 23.3091

Same Dimension

The Same Dimension uses a secret algorithm to generate beautiful new colors.



62.6760, 64.2176, 64.3512



84.9127, 86.4323, 84.8446



65.1750, 69.2157, 65.1842



13.3731, 13.6856, 13.6623



18.5526, 11.3907, 1.2208



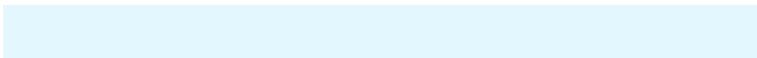
1.2763, 0.8867, 0.1039

Inverse Universe

The Inverse Universe completely reimagines the original color for something new.



61.4388, 66.2377, 77.9543



82.8451, 89.8074, 107.5759



58.9708, 61.3016, 77.1316



13.0977, 14.1352, 16.6902



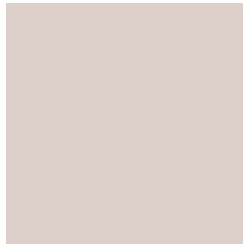
14.4611, 16.7917, 42.2173



1.0110, 1.2360, 2.7597

Previews

White Background



This preview shows how the XYZ color 62.6742, 64.2148, 64.3498 looks on a white background.

Color Contrast Check

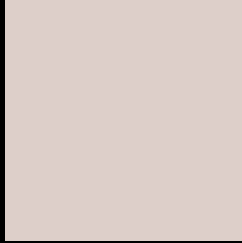
Large Text (above 18pt) WCAG AA × Fail

Any Text WCAG AA × Fail

Large Text (above 18pt) WCAG AAA × Fail

Any Text WCAG AAA × Fail

Black Background



This preview shows how the XYZ color 62.6742, 64.2148, 64.3498 looks on a black background.

Color Contrast Check

Large Text (above 18pt) WCAG AA ✓ Pass

Any Text WCAG AA ✓ Pass

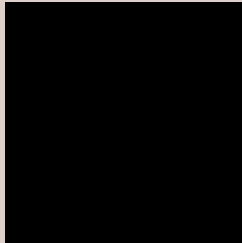
Large Text (above 18pt) WCAG AAA ✓ Pass

Any Text WCAG AAA ✓ Pass

If you want to check with other color combinations, try the [Color Contrast Checker](#).

XYZ 62.6742, 64.2148, 64.3498

Background



This preview shows how black text looks on a background with the XYZ color 62.6742, 64.2148, 64.3498.

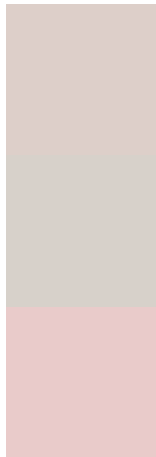


This preview shows how white text looks on a background with the XYZ color 62.6742, 64.2148,

Color Blindness Simulation

Color vision deficiency is a very complex topic, and I could not describe the different causes any better than Wikipedia does, so if you want to learn more, you should check out their [article about color blindness](#).

Dichromacy



Original Color

62.6742, 64.2148, 64.3498

Protanopia

61.4855, 64.3123, 65.0500

Deuteranopia

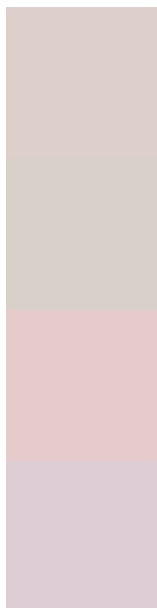
65.6209, 64.2998, 64.8296



Tritanopia

65.2516, 64.2003, 76.6629

Trichromacy



Original Color

62.6742, 64.2148, 64.3498

Protanomaly

61.8318, 64.1277, 64.9961

Deuteranomaly

64.5666, 64.1080, 64.8482

Tritanomaly

64.2730, 64.1547, 71.9463

Monochromacy



Original Color

62.6742, 64.2148, 64.3498

Achromatopsia

61.9161, 65.1406, 70.9381

Achromatomaly

62.3334, 65.0453, 68.3012

CSS Examples

Text

The CSS property to change the color of the text to XYZ 62.6742, 64.2148, 64.3498 is called "color". The color property can be set on classes, ids or directly on the HTML element.

This example shows how text in the color rgb(221, 207, 201) looks like.

```
.text, #text, p{  
    color:rgb(221, 207, 201)  
}
```

If you want to add a text shadow in that color use the text-shadow property, you can generate a text shadow directly with our [CSS Text Shadow Generator](#).

Here you see how black text with a 4 pixel rgb(221, 207, 201) colored shadow looks like.

```
.shadow{ text-shadow: 4px 4px 2px rgb(221, 207, 201) }
```

Border

The CSS property to change the border of an element to XYZ 62.6742, 64.2148, 64.3498 is called "border". The border property can be set on classes, ids or directly on the HTML element.

This example shows the color as border, it can be applied via the CSS property "border" or "border-color".

```
.border, #border, table{ border:4px solid rgb(221, 207, 201) }
```


If only the border color should be changed use the property `border-color`.

```
.border{ border-color:rgb(221, 207, 201) }
```

If you want to add a box shadow in that color use:

Here you see how a box with a 4 pixel `rgb(221, 207, 201)` colored shadow looks like.

```
.boxshadow{ -moz-box-shadow:4px 4px 4px  
4px rgb(221, 207, 201); -webkit-box-  
shadow:4px 4px 4px 4px rgb(221, 207, 201);  
box-shadow:4px 4px 4px 4px rgb(221, 207,  
201) }
```

Background

The CSS property to change the background color of an element to XYZ 62.6742, 64.2148, 64.3498 is called "background". The background property can be set on classes, ids or directly on the HTML element.

```
.background, #background, body{  
background: rgb(221, 207, 201) }
```

If only the background color should be changed can be used:

```
.background{ background-color: rgb(221,  
207, 201) }
```

This example shows the color as background, it is applied via the CSS property "background".

To optimize and compress your CSS code, you can use our [online CSS compressor and optimizer](#) based on csstidy. If you want to create a linear or radial gradient as background or border, check our [CSS Gradient Generator](#).

Hey! You found this booklet interesting? Support Converting Colors with the new Membership Option!

The pro membership hides all ads, plus gives you double the colors in the color bucket, and more awesome pro features!

[Learn more, Memberships starting at \\$2.50/m!](#)

**Follow me
on Twitter!**

@ConvertingColor