

Converting Colors

XYZ(62.7222, 63.2245, 61.7211)

Have a look what the booklet for
XYZ(62.7222, 63.2245, 61.7211)
contains.

XYZ(62.7222, 63.2245, 61.7211)	3
<i>Conversions</i>	4
<i>Details</i>	6
<i>Harmonies</i>	12
<i>Previews</i>	24
<i>Color Blindness Simulation</i>	28
<i>CSS Examples</i>	31

Color

**XYZ(62.7222, 63.2245,
61.7211)**

Conversions

Conversions Part 1

Format	Color
Hex	E1CCC5
RGB	225, 204, 197
RGB Percent	88%, 80%, 77%
CMY	0.1176, 0.2000, 0.2274
CMYK	0.00, 0.09, 0.12, 0.12
HSL	15°, 32%, 83%
HSV	15°, 12%, 88%
XYZ	62.7222, 63.2245, 61.7211
YIQ	209.4810, 14.7630, 2.2750

Conversions

Conversions Part 2

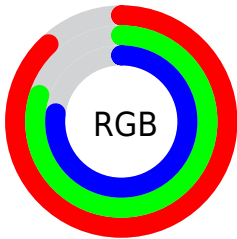
Format	Color
R_{YB}	225, 206, 197
Decimal	14798021
CIE Lab	83.56, 6.17, 6.13
CIE LCh	84, 8.700, 44.836
Yxy	63.2245, 0.3342, 0.3369
Android (android.graphics.Color)	4292988101 (0xFFE1CCC5)
YUV	209.4810, -6.1531, 13.6102
Hunter-Lab	79.5138, 1.6554, 9.6370

Details

The XYZ color **62.7222, 63.2245, 61.7211** is a light color, and the websafe version is hex **CCCCCC**. A complement of this color would be **61.6876, 67.4479, 81.0021**, and the grayscale version is **60.9522, 64.1264, 69.8337**.

A 20% lighter version of the original color is **94.8894, 99.9358, 108.0543**, and **32.4418, 32.3419, 30.5193** is the 20% darker color. If you saturate the color by 10%, you get **56.5393, 54.6807, 47.8757**, and if you desaturate by 10%, it is **69.7279, 72.7967, 77.7407**.

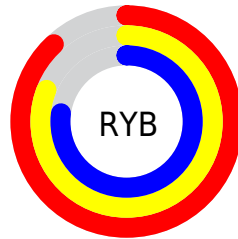
Distribution



Red (88%)

Green (80%)

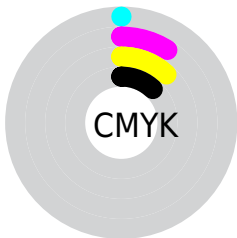
Blue (77%)



Red (88%)

Yellow (81%)

Blue (77%)

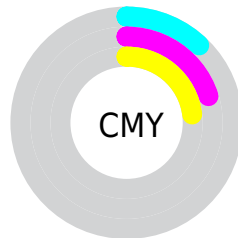


Cyan (0%)

Magenta (9%)

Yellow (12%)

Black (12%)



Cyan (12%)

Magenta (20%)

Yellow (23%)

Brightness & Saturation Gradients

These gradients show how the XYZ color 62.7222, 63.2245, 61.7211 changes by changing the brightness by 10 percent. The first figure shows a shift by +10% for each color and the second figure -10%.

Similar to the brightness gradients but the following saturation gradients show a change of the XYZ color 62.7222, 63.2245, 61.7211 by changing the saturation by 10% instead.

62.7222, 63.2245,
61.7211

62.7222, 63.2245,
61.7211

424.2363,
436.3838, 448.8926

45.8743, 46.0229,
44.3730

107.8527,
109.4933, 108.8900

32.3509, 32.2639,
30.6245

136.8660,
139.3293, 139.5480

21.7865, 21.5631,
20.0571

170.6652,
174.1455, 175.4796

13.8158, 13.5362,
12.2520

209.6156,
214.3263, 217.1036

8.0735, 7.7988,
6.7909

254.0825,
260.2562, 264.8383

4.1942, 3.9665,
3.2552

304.4314,

1.8126, 1.6548,

312.3194, 319.1023

1.2264

361.0275,
370.9005, 380.3142

■ 0.5252, 0.3942,
0.0003

■ 0.0000, 0.0000,
0.0000

■ 62.7222, 63.2245,
61.7211

■ 62.7222, 63.2245,
61.7211

■ 56.5393, 54.6807,
47.8757

■ 69.7279, 72.7967,
77.7407

■ 51.1431, 47.1225,
36.1064

■ 77.5803, 83.4215,
96.0188

■ 46.5027, 40.5165,
26.3135

■ 84.7406, 94.5058,
108.3829

■ 42.5829, 34.8240,
18.3876

■ 84.8615, 94.7477,
108.4232

■ 39.3456, 30.0038,
12.2084

■ 36.7490, 26.0113,
7.6414

■ 34.7462, 22.7977,
4.5323

■ 33.2828, 20.3083,
2.6961

■ 32.4795, 18.8636,
1.9292

Harmonies

Analogous

The Analogous color harmony consists of three colors that are next to each other on the color wheel.



63.6957, 63.2245, 66.1952



62.7222, 63.2245, 61.7211



61.0541, 63.2245, 59.2241

Triad

The Triadic color harmony groups three colors that are evenly spaced from another and form a triangle on the color wheel.



62.7222, 63.2245, 61.7211



56.6340, 63.2245, 66.1388



61.0337, 63.2245, 79.4629

Complementary

The Complementary color scheme is a pair of colors which are on the opposite of each other on the color wheel.



62.7222, 63.2245, 61.7211



61.6876, 67.4479, 81.0021

Split Complementary

Split-complementary colors differ from the complementary color scheme. The scheme consists of three colors, the original color and two neighbors of the complement color.



59.1420, 63.2245, 79.4458



62.7222, 63.2245, 61.7211



56.6288, 63.2245, 71.5558

Square

The Square scheme is like the rectangle color scheme, but the four colors are evenly spaced on the color wheel.



62.7222, 63.2245, 61.7211



57.5527, 63.2245, 61.6817



57.5383, 63.2245, 76.4878



62.7070, 63.2245, 76.5333

Rectangle

The Rectangle color scheme consists of four colors that form a rectangle on the color wheel.



62.7222, 63.2245, 61.7211



59.7854, 63.2245, 58.9286



57.5383, 63.2245, 76.4878



60.4016, 63.2245, 79.8063

Sweetspot

The Sweet Spot groups the original color and five complimentary colors.



62.7239, 63.2273, 61.7224



91.0593, 94.5771, 99.6821



63.6732, 61.0029, 74.7491



19.3342, 20.0305, 20.9766



0.0000, 0.0000, 0.0000



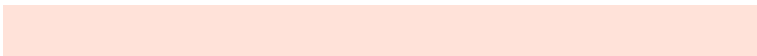
20.3446, 21.4041, 23.3091

Same Dimension

The Same Dimension uses a secret algorithm to generate beautiful new colors.



62.7239, 63.2273, 61.7224



81.0149, 80.8227, 76.8057



66.2014, 70.1822, 62.8816



13.9844, 14.2548, 14.3212



18.7944, 11.0267, 1.1378



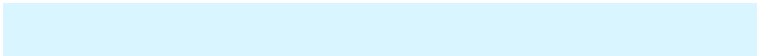
1.3732, 0.9052, 0.1024

Inverse Universe

The Inverse Universe completely reimagines the original color for something new.



61.6876, 67.4479, 81.0021



79.3742, 87.4998, 107.3134



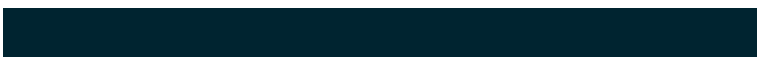
58.2102, 60.4932, 79.8430



13.8111, 14.9612, 17.5476



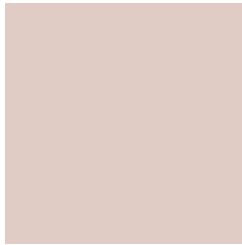
16.0741, 19.6178, 43.9878



1.1838, 1.4990, 3.0722

Previews

White Background



This preview shows how the XYZ color 62.7222, 63.2245, 61.7211 looks on a white background.

Color Contrast Check

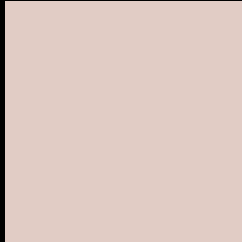
Large Text (above 18pt) WCAG AA × Fail

Any Text WCAG AA × Fail

Large Text (above 18pt) WCAG AAA × Fail

Any Text WCAG AAA × Fail

Black Background



This preview shows how the XYZ color 62.7222, 63.2245, 61.7211 looks on a black background.

Color Contrast Check

Large Text (above 18pt) WCAG AA ✓ Pass

Any Text WCAG AA ✓ Pass

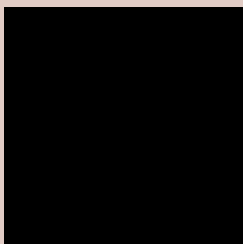
Large Text (above 18pt) WCAG AAA ✓ Pass

Any Text WCAG AAA ✓ Pass

If you want to check with other color combinations, try the [Color Contrast Checker](#).

XYZ 62.7222, 63.2245, 61.7211

Background



This preview shows how black text looks on a background with the XYZ color 62.7222, 63.2245, 61.7211.



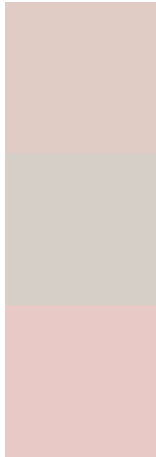
This preview shows how white text looks on a background with the XYZ color 62.7222, 63.2245,

61.7211.

Color Blindness Simulation

Color vision deficiency is a very complex topic, and I could not describe the different causes any better than Wikipedia does, so if you want to learn more, you should check out their [article about color blindness](#).

Dichromacy



Original Color

62.7222, 63.2245, 61.7211

Protanopia

60.3532, 63.0453, 63.0208

Deuteranopia

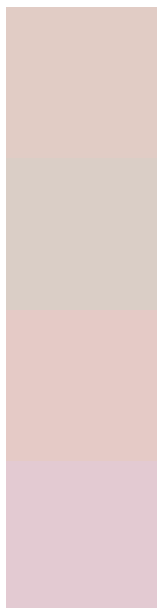
64.3584, 63.0063, 62.1955



Tritanopia

65.4059, 63.2770, 74.4121

Trichromacy



Original Color

62.7222, 63.2245, 61.7211

Protanomaly

61.1778, 63.1253, 62.3861

Deuteranomaly

63.6267, 62.9763, 62.2282

Tritanomaly

64.4319, 63.2251, 69.7805

Monochromacy



Original Color

62.7222, 63.2245, 61.7211

Achromatopsia

60.6036, 63.7597, 69.4343

Achromatomaly

61.3566, 63.4805, 66.7767

CSS Examples

Text

The CSS property to change the color of the text to XYZ 62.7222, 63.2245, 61.7211 is called "color". The color property can be set on classes, ids or directly on the HTML element.

This example shows how text in the color `rgb(225, 204, 197)` looks like.

```
.text, #text, p{  
    color:rgb(225, 204, 197)  
}
```

If you want to add a text shadow in that color use the text-shadow property, you can generate a text shadow directly with our [CSS Text Shadow Generator](#).

Here you see how black text with a 4 pixel rgb(225, 204, 197) colored shadow looks like.

```
.shadow{ text-shadow: 4px 4px 2px rgb(225, 204, 197) }
```

Border

The CSS property to change the border of an element to XYZ 62.7222, 63.2245, 61.7211 is called "border". The border property can be set on classes, ids or directly on the HTML element.

This example shows the color as border, it can be applied via the CSS property "border" or "border-color".

```
.border, #border, table{ border:4px solid rgb(225, 204, 197) }
```


If only the border color should be changed use the property `border-color`.

```
.border{ border-color:rgb(225, 204, 197) }
```

If you want to add a box shadow in that color use:

Here you see how a box with a 4 pixel `rgb(225, 204, 197)` colored shadow looks like.

```
.boxshadow{ -moz-box-shadow:4px 4px 4px 4px rgb(225, 204, 197); -webkit-box-shadow:4px 4px 4px 4px rgb(225, 204, 197); box-shadow:4px 4px 4px 4px rgb(225, 204, 197) }
```

Background

The CSS property to change the background color of an element to XYZ 62.7222, 63.2245, 61.7211 is called "background". The background property can be set on classes, ids or directly on the HTML element.

```
.background, #background, body{  
background: rgb(225, 204, 197) }
```

If only the background color should be changed can be used:

```
.background{ background-color: rgb(225,  
204, 197) }
```

This example shows the color as background, it is applied via the CSS property "background".

To optimize and compress your CSS code, you can use our [online CSS compressor and optimizer](#) based on csstidy. If you want to create a linear or radial gradient as background or border, check our [CSS Gradient Generator](#).

Hey! You found this booklet interesting? Support Converting Colors with the new Membership Option!

The pro membership hides all ads, plus gives you double the colors in the color bucket, and more awesome pro features!

[Learn more, Memberships starting at \\$2.50/m!](#)

**Follow me
on Twitter!**

@ConvertingColor