

Converting Colors

XYZ(62.7561, 63.1063, 61.2150)

Have a look what the booklet for
XYZ(62.7561, 63.1063, 61.2150)
contains.

XYZ(62.9207, 63.3400, 61.1341)	3
<i>Conversions</i>	4
<i>Details</i>	6
<i>Harmonies</i>	12
<i>Previews</i>	24
<i>Color Blindness Simulation</i>	28
<i>CSS Examples</i>	31

Color

**XYZ(62.9207, 63.3400,
61.1341)**

Conversions

Conversions Part 1

Format	Color
Hex	E2CCC4
RGB	226, 204, 196
RGB Percent	89%, 80%, 77%
CMY	0.1137, 0.2000, 0.2314
CMYK	0.00, 0.10, 0.13, 0.11
HSL	16°, 34%, 83%
HSV	16°, 13%, 89%
XYZ	62.9207, 63.3400, 61.1341
YIQ	209.6660, 15.6800, 2.1760

Conversions

Conversions Part 2

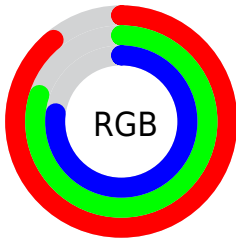
Format	Color
R _Y B	226, 207, 196
Decimal	14863556
CIE Lab	83.62, 6.37, 6.77
CIE LCh	84, 9.290, 46.736
Yxy	63.3400, 0.3358, 0.3380
Android (android.graphics.Color)	4293053636 (0xFFE2CCC4)
YUV	209.6660, -6.7373, 14.3249
Hunter-Lab	79.5864, 1.8451, 10.1670

Details

The XYZ color **62.9207, 63.3400, 61.1341** is a light color, and the websafe version is hex **CCCCCC**. A complement of this color would be **61.5635, 67.3682, 81.7107**, and the grayscale version is **61.0766, 64.2573, 69.9762**.

A 20% lighter version of the original color is **94.7296, 99.8718, 107.2129**, and **32.3664, 32.3117, 30.1221** is the 20% darker color. If you saturate the color by 10%, you get **56.8088, 54.9272, 47.3470**, and if you desaturate by 10%, it is **69.8426, 72.7515, 77.1045**.

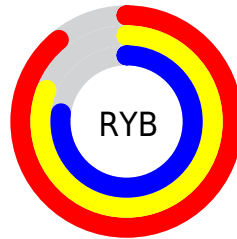
Distribution



Red (89%)

Green (80%)

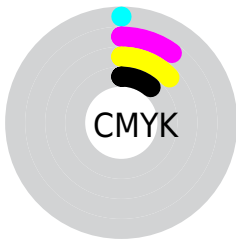
Blue (77%)



Red (89%)

Yellow (81%)

Blue (77%)

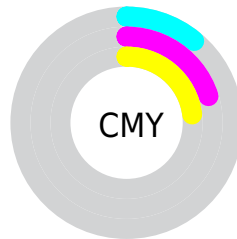


Cyan (0%)

Magenta (10%)

Yellow (13%)

Black (11%)



Cyan (11%)

Magenta (20%)

Yellow (23%)

Brightness & Saturation Gradients

These gradients show how the XYZ color 62.9207, 63.3400, 61.1341 changes by changing the brightness by 10 percent. The first figure shows a shift by +10% for each color and the second figure -10%.

Similar to the brightness gradients but the following saturation gradients show a change of the XYZ color 62.9207, 63.3400, 61.1341 by changing the saturation by 10% instead.

62.9207, 63.3400,
61.1341

62.9207, 63.3400,
61.1341

424.9459,
436.8024, 446.6857

46.0355, 46.1163,
43.9021

108.1376,
109.6599, 108.0325

32.4786, 32.3376,
30.2570

137.1999,
139.5249, 138.5360

21.8846, 21.6195,
19.7800

171.0519,
174.3724, 174.3005

13.8883, 13.5776,
12.0527

210.0591,
214.5869, 215.7444

8.1242, 7.8275,
6.6566

254.5867,
260.5528, 263.2864

4.2270, 3.9847,
3.1731

305.0002,

1.8313, 1.6650,

312.6544, 317.3449

1.1837

361.6648,
371.2761, 378.3384

■ 0.5364, 0.4009,
0.0000

■ 0.0000, 0.0000,
0.0000

■ 62.9207, 63.3400,
61.1341

■ 62.9207, 63.3400,
61.1341

■ 56.8088, 54.9272,
47.3470

■ 69.8426, 72.7515,
77.1045

■ 51.4715, 47.4716,
35.6437

■ 77.5981, 83.1848,
95.3435

■ 46.8781, 40.9413,
25.9233

■ 84.7661, 94.0925,
108.3018

■ 42.9941, 35.2992,
18.0746

■ 85.1743, 94.9089,
108.4378

■ 39.7818, 30.5057,
11.9753

■ 37.1999, 26.5180,
7.4886

■ 35.2018, 23.2892,
4.4569

■ 33.7335, 20.7670,
2.6900

■ 32.9958, 19.4319,
2.0117

Harmonies

Analogous

The Analogous color harmony consists of three colors that are next to each other on the color wheel.



64.0228, 63.3400, 65.7939



62.9207, 63.3400, 61.1341



61.1037, 63.3400, 58.6376

Triad

The Triadic color harmony groups three colors that are evenly spaced from another and form a triangle on the color wheel.



62.9207, 63.3400, 61.1341



56.4791, 63.3400, 66.4307



61.3350, 63.3400, 80.2479

Complementary

The Complementary color scheme is a pair of colors which are on the opposite of each other on the color wheel.



62.9207, 63.3400, 61.1341



61.5635, 67.3682, 81.7107

Split Complementary

Split-complementary colors differ from the complementary color scheme. The scheme consists of three colors, the original color and two neighbors of the complement color.



59.3107, 63.3400, 80.4422



62.9207, 63.3400, 61.1341



56.5378, 63.3400, 72.2395

Square

The Square scheme is like the rectangle color scheme, but the four colors are evenly spaced on the color wheel.



62.9207, 63.3400, 61.1341



57.4019, 63.3400, 61.5776



57.5643, 63.3400, 77.4408



63.0933, 63.3400, 76.9240

Rectangle

The Rectangle color scheme consists of four colors that form a rectangle on the color wheel.



62.9207, 63.3400, 61.1341



59.7456, 63.3400, 58.4393



57.5643, 63.3400, 77.4408



60.6623, 63.3400, 80.6876

Sweetspot

The Sweet Spot groups the original color and five complimentary colors.



62.9224, 63.3428, 61.1354



91.1114, 94.6813, 99.6994



63.7596, 60.7114, 74.6884



19.3473, 20.0568, 20.9810



0.0000, 0.0000, 0.0000



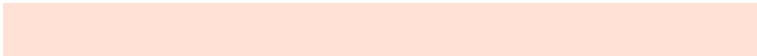
20.3446, 21.4041, 23.3091

Same Dimension

The Same Dimension uses a secret algorithm to generate beautiful new colors.



62.9224, 63.3428, 61.1354



80.3515, 80.0220, 74.9631



66.6601, 70.8180, 62.3813



14.0032, 14.2924, 14.3274



18.9075, 11.2529, 1.1755



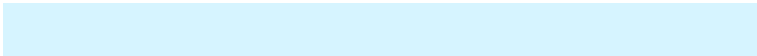
1.3832, 0.9254, 0.1057

Inverse Universe

The Inverse Universe completely reimagines the original color for something new.



61.5635, 67.3682, 81.7107



78.2251, 86.3165, 107.1456



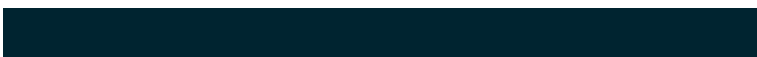
57.8492, 59.9395, 80.4726



13.7911, 14.9212, 17.5409



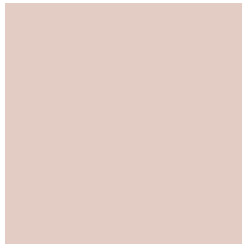
15.6825, 18.8346, 43.8572



1.1594, 1.4502, 3.0641

Previews

White Background



This preview shows how the XYZ color 62.9207, 63.3400, 61.1341 looks on a white background.

Color Contrast Check

Large Text (above 18pt) WCAG AA × Fail

Any Text WCAG AA × Fail

Large Text (above 18pt) WCAG AAA × Fail

Any Text WCAG AAA × Fail

Black Background



This preview shows how the XYZ color 62.9207, 63.3400, 61.1341 looks on a black background.

Color Contrast Check

Large Text (above 18pt) WCAG AA ✓ Pass

Any Text WCAG AA ✓ Pass

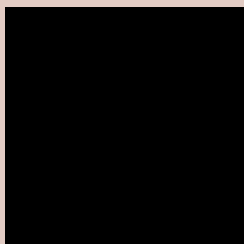
Large Text (above 18pt) WCAG AAA ✓ Pass

Any Text WCAG AAA ✓ Pass

If you want to check with other color combinations, try the [Color Contrast Checker](#).

XYZ 62.9207, 63.3400, 61.1341

Background



This preview shows how black text looks on a background with the XYZ color 62.9207, 63.3400, 61.1341.

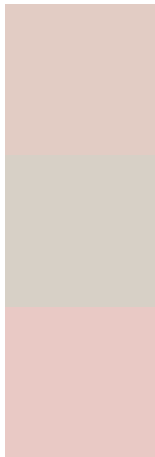


This preview shows how white text looks on a background with the XYZ color 62.9207, 63.3400,

Color Blindness Simulation

Color vision deficiency is a very complex topic, and I could not describe the different causes any better than Wikipedia does, so if you want to learn more, you should check out their [article about color blindness](#).

Dichromacy



Original Color

62.9207, 63.3400, 61.1341

Protanopia

60.7732, 63.6360, 62.5060

Deuteranopia

64.5690, 63.1281, 61.6051



Tritanopia

65.7241, 63.4411, 74.4270

Trichromacy



Original Color

62.9207, 63.3400, 61.1341

Protanomaly

61.6043, 63.7169, 61.8750

Deuteranomaly

63.8317, 63.0953, 61.6376

Tritanomaly

64.6241, 63.3385, 69.1411

Monochromacy



Original Color

62.9207, 63.3400, 61.1341

Achromatopsia

61.2578, 64.4480, 70.1838

Achromatomaly

61.8942, 64.1185, 66.8715

CSS Examples

Text

The CSS property to change the color of the text to XYZ 62.9207, 63.3400, 61.1341 is called "color". The color property can be set on classes, ids or directly on the HTML element.

This example shows how text in the color rgb(226, 204, 196) looks like.

```
.text, #text, p{  
    color:rgb(226, 204, 196)  
}
```

If you want to add a text shadow in that color use the text-shadow property, you can generate a text shadow directly with our [CSS Text Shadow Generator](#).

Here you see how black text with a 4 pixel rgb(226, 204, 196) colored shadow looks like.

```
.shadow{ text-shadow: 4px 4px 2px rgb(226, 204, 196) }
```

Border

The CSS property to change the border of an element to XYZ 62.9207, 63.3400, 61.1341 is called "border". The border property can be set on classes, ids or directly on the HTML element.

This example shows the color as border, it can be applied via the CSS property "border" or "border-color".

```
.border, #border, table{ border:4px solid rgb(226, 204, 196) }
```


If only the border color should be changed use the property `border-color`.

```
.border{ border-color:rgb(226, 204, 196) }
```

If you want to add a box shadow in that color use:

Here you see how a box with a 4 pixel `rgb(226, 204, 196)` colored shadow looks like.

```
.boxshadow{ -moz-box-shadow:4px 4px 4px  
4px rgb(226, 204, 196); -webkit-box-  
shadow:4px 4px 4px 4px rgb(226, 204, 196);  
box-shadow:4px 4px 4px 4px rgb(226, 204,  
196) }
```

Background

The CSS property to change the background color of an element to XYZ 62.9207, 63.3400, 61.1341 is called "background". The background property can be set on classes, ids or directly on the HTML element.

```
.background, #background, body{  
background: rgb(226, 204, 196) }
```

If only the background color should be changed can be used:

```
.background{ background-color: rgb(226,  
204, 196) }
```

This example shows the color as background, it is applied via the CSS property "background".

To optimize and compress your CSS code, you can use our [online CSS compressor and optimizer](#) based on csstidy. If you want to create a linear or radial gradient as background or border, check our [CSS Gradient Generator](#).

Hey! You found this booklet interesting? Support Converting Colors with the new Membership Option!

The pro membership hides all ads, plus gives you double the colors in the color bucket, and more awesome pro features!

[Learn more, Memberships starting at \\$2.50/m!](#)

**Follow me
on Twitter!**

@ConvertingColor