

Converting Colors

XYZ(62.7587, 63.2032, 63.5353)

Have a look what the booklet for
XYZ(62.7587, 63.2032, 63.5353)
contains.

XYZ(62.7587, 63.2032, 63.5353)	3
<i>Conversions</i>	4
<i>Details</i>	6
<i>Harmonies</i>	12
<i>Previews</i>	24
<i>Color Blindness Simulation</i>	28
<i>CSS Examples</i>	31

Color

**XYZ(62.7587, 63.2032,
63.5353)**

Conversions

Conversions Part 1

Format	Color
Hex	E0CCC8
RGB	224, 204, 200
RGB Percent	88%, 80%, 78%
CMY	0.1216, 0.2000, 0.2157
CMYK	0.00, 0.09, 0.11, 0.12
HSL	10°, 28%, 83%
HSV	10°, 11%, 88%
XYZ	62.7587, 63.2032, 63.5353
YIQ	209.5240, 13.2040, 2.9960

Conversions

Conversions Part 2

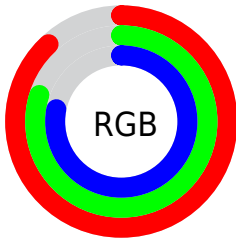
Format	Color
R_{YB}	224, 205, 200
Decimal	14732488
CIE _{Lab}	83.55, 6.30, 4.51
CIE _{LCh}	84, 7.749, 35.582
Yxy	63.2032, 0.3312, 0.3335
Android (android.graphics.Color)	4292922568 (0xFFE0CCC8)
YUV	209.5240, -4.6953, 12.6955
Hunter-Lab	79.5004, 1.7845, 8.2668

Details

The XYZ color **62.7587, 63.2032, 63.5353** is a light color, and the websafe version is hex **CCCCCC**. A complement of this color would be **62.8669, 68.8463, 80.4970**, and the grayscale version is **60.9719, 64.1471, 69.8562**.

A 20% lighter version of the original color is **95.0500, 100.0000, 108.9000**, and **32.4568, 32.3230, 31.7224** is the 20% darker color. If you saturate the color by 10%, you get **56.1574, 53.8872, 49.3514**, and if you desaturate by 10%, it is **70.2787, 73.7413, 79.9192**.

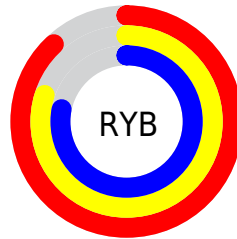
Distribution



Red (88%)

Green (80%)

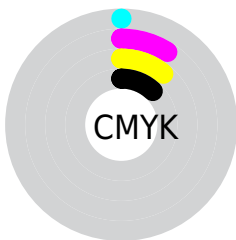
Blue (78%)



Red (88%)

Yellow (80%)

Blue (78%)

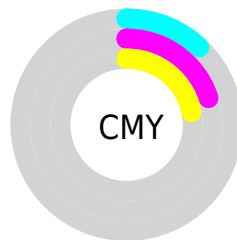


Cyan (0%)

Magenta (9%)

Yellow (11%)

Black (12%)



Cyan (12%)

Magenta (20%)

Yellow (22%)

Brightness & Saturation Gradients

These gradients show how the XYZ color 62.7587, 63.2032, 63.5353 changes by changing the brightness by 10 percent. The first figure shows a shift by +10% for each color and the second figure -10%.

Similar to the brightness gradients but the following saturation gradients show a change of the XYZ color 62.7587, 63.2032, 63.5353 by changing the saturation by 10% instead.

62.7587, 63.2032,
63.5353

62.7587, 63.2032,
63.5353

424.3668,
436.3066, 455.6709

45.9039, 46.0056,
45.8306

107.9051,
109.4626, 111.5344

32.3743, 32.2503,
31.7645

136.9274,
139.2932, 142.6660

21.8045, 21.5527,
20.9183

170.7363,
174.1037, 179.1102

13.8291, 13.5286,
12.8737

209.6971,
214.2783, 221.2857

8.0828, 7.7936,
7.2119

254.1753,
260.2015, 269.6110

4.2002, 3.9631,
3.5145

304.5360,

1.8160, 1.6530,

312.2577, 324.5046

1.3630

361.1447,
370.8312, 386.3850

■ 0.5273, 0.3929,
0.1126

■ 0.0000, 0.0000,
0.0000

■ 62.7587, 63.2032,
63.5353

■ 62.7587, 63.2032,
63.5353

■ 56.1574, 53.8872,
49.3514

■ 70.2787, 73.7413,
79.9192

■ 50.4342, 45.7409,
37.2698

■ 78.7454, 85.5349,
98.5871

■ 45.5532, 38.7204,
27.1912

■ 84.5508, 94.5875,
108.4086

■ 41.4741, 32.7758,
19.0071

■ 38.1530, 27.8535,
12.5981

■ 35.5420, 23.8952,
7.8317

■ 33.5871, 20.8365,
4.5565

■ 32.2264, 18.6050,
2.5924

■ 31.4140, 17.1938,
1.6630

Harmonies

Analogous

The Analogous color harmony consists of three colors that are next to each other on the color wheel.



63.3704, 63.2032, 67.9149



62.7587, 63.2032, 63.5353



61.4282, 63.2032, 60.6746

Triad

The Triadic color harmony groups three colors that are evenly spaced from another and form a triangle on the color wheel.



62.7587, 63.2032, 63.5353



57.1578, 63.2032, 65.0358



60.3899, 63.2032, 78.5172

Complementary

The Complementary color scheme is a pair of colors which are on the opposite of each other on the color wheel.



62.7587, 63.2032, 63.5353



62.8669, 68.8463, 80.4970

Split Complementary

Split-complementary colors differ from the complementary color scheme. The scheme consists of three colors, the original color and two neighbors of the complement color.



58.7374, 63.2032, 77.6583



62.7587, 63.2032, 63.5353



56.8915, 63.2032, 69.7281

Square

The Square scheme is like the rectangle color scheme, but the four colors are evenly spaced on the color wheel.



62.7587, 63.2032, 63.5353



58.1989, 63.2032, 61.5120



57.4645, 63.2032, 74.3847



61.9864, 63.2032, 76.6798

Rectangle

The Rectangle color scheme consists of four colors that form a rectangle on the color wheel.



62.7587, 63.2032, 63.5353



60.3238, 63.2032, 59.9364



57.4645, 63.2032, 74.3847



59.8224, 63.2032, 78.5353

Sweetspot

The Sweet Spot groups the original color and five complimentary colors.



62.7605, 63.2060, 63.5366



91.8429, 95.5176, 101.8752



64.3138, 62.3241, 76.3510



19.4789, 20.1938, 21.4137



0.0000, 0.0000, 0.0000



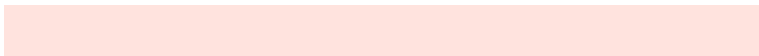
20.3446, 21.4041, 23.3091

Same Dimension

The Same Dimension uses a secret algorithm to generate beautiful new colors.



62.7605, 63.2060, 63.5366



81.9780, 81.6725, 80.4455



65.7225, 69.1300, 64.5240



13.8911, 14.0681, 14.2901



18.3413, 10.1205, 0.9868



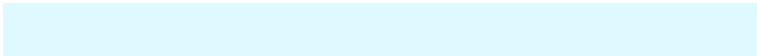
1.3280, 0.8148, 0.0873

Inverse Universe

The Inverse Universe completely reimagines the original color for something new.



62.8669, 68.8463, 80.4970



82.1492, 90.7678, 107.7980



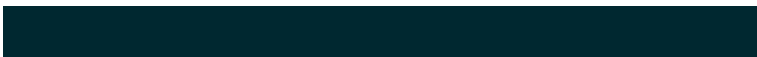
59.8307, 62.7738, 79.4849



13.9118, 15.1627, 17.5811



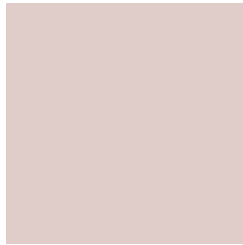
18.2024, 23.8744, 44.6972



1.3141, 1.7596, 3.1156

Previews

White Background



This preview shows how the XYZ color 62.7587, 63.2032, 63.5353 looks on a white background.

Color Contrast Check

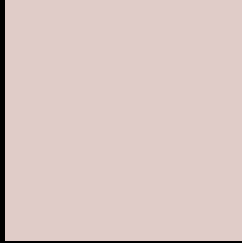
Large Text (above 18pt) WCAG AA × Fail

Any Text WCAG AA × Fail

Large Text (above 18pt) WCAG AAA × Fail

Any Text WCAG AAA × Fail

Black Background



This preview shows how the XYZ color 62.7587, 63.2032, 63.5353 looks on a black background.

Color Contrast Check

Large Text (above 18pt) WCAG AA ✓ Pass

Any Text WCAG AA ✓ Pass

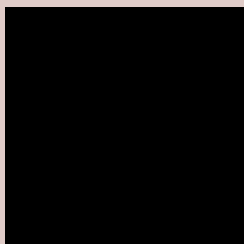
Large Text (above 18pt) WCAG AAA ✓ Pass

Any Text WCAG AAA ✓ Pass

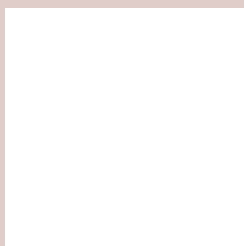
If you want to check with other color combinations, try the [Color Contrast Checker](#).

XYZ 62.7587, 63.2032, 63.5353

Background



This preview shows how black text looks on a background with the XYZ color 62.7587, 63.2032, 63.5353.



This preview shows how white text looks on a background with the XYZ color 62.7587, 63.2032,

Color Blindness Simulation

Color vision deficiency is a very complex topic, and I could not describe the different causes any better than Wikipedia does, so if you want to learn more, you should check out their [article about color blindness](#).

Dichromacy



Original Color

62.7587, 63.2032, 63.5353

Protanopia

60.4141, 63.0360, 64.8601

Deuteranopia

64.3843, 62.9793, 64.0211



Tritanopia

64.7751, 62.9518, 74.3825

Trichromacy



Original Color

62.7587, 63.2032, 63.5353

Protanomaly

61.2292, 63.1114, 64.2129

Deuteranomaly

63.6581, 62.9521, 64.0542

Tritanomaly

63.9297, 62.9518, 70.4095

Monochromacy



Original Color

62.7587, 63.2032, 63.5353

Achromatopsia

61.2578, 64.4480, 70.1838

Achromatomaly

61.7208, 64.0151, 67.4956

CSS Examples

Text

The CSS property to change the color of the text to XYZ 62.7587, 63.2032, 63.5353 is called "color". The color property can be set on classes, ids or directly on the HTML element.

This example shows how text in the color rgb(224, 204, 200) looks like.

```
.text, #text, p{  
    color:rgb(224, 204, 200)  
}
```

If you want to add a text shadow in that color use the text-shadow property, you can generate a text shadow directly with our [CSS Text Shadow Generator](#).

Here you see how black text with a 4 pixel rgb(224, 204, 200) colored shadow looks like.

```
.shadow{ text-shadow: 4px 4px 2px rgb(224, 204, 200) }
```

Border

The CSS property to change the border of an element to XYZ 62.7587, 63.2032, 63.5353 is called "border". The border property can be set on classes, ids or directly on the HTML element.

This example shows the color as border, it can be applied via the CSS property "border" or "border-color".

```
.border, #border, table{ border:4px solid rgb(224, 204, 200) }
```


If only the border color should be changed use the property `border-color`.

```
.border{ border-color:rgb(224, 204, 200) }
```

If you want to add a box shadow in that color use:

Here you see how a box with a 4 pixel `rgb(224, 204, 200)` colored shadow looks like.

```
.boxshadow{ -moz-box-shadow:4px 4px 4px  
4px rgb(224, 204, 200); -webkit-box-  
shadow:4px 4px 4px 4px rgb(224, 204, 200);  
box-shadow:4px 4px 4px 4px rgb(224, 204,  
200) }
```

Background

The CSS property to change the background color of an element to XYZ 62.7587, 63.2032, 63.5353 is called "background". The background property can be set on classes, ids or directly on the HTML element.

```
.background, #background, body{  
background: rgb(224, 204, 200) }
```

If only the background color should be changed can be used:

```
.background{ background-color: rgb(224,  
204, 200) }
```

This example shows the color as background, it is applied via the CSS property "background".

To optimize and compress your CSS code, you can use our [online CSS compressor and optimizer](#) based on csstidy. If you want to create a linear or radial gradient as background or border, check our [CSS Gradient Generator](#).

Hey! You found this booklet interesting? Support Converting Colors with the new Membership Option!

The pro membership hides all ads, plus gives you double the colors in the color bucket, and more awesome pro features!

[Learn more, Memberships starting at \\$2.50/m!](#)

**Follow me
on Twitter!**

@ConvertingColor