

Converting Colors

XYZ(62.7588, 61.1457, 65.4804)

Have a look what the booklet for
XYZ(62.7588, 61.1457, 65.4804)
contains.

| | |
|--|----|
| XYZ(62.7717, 61.0787, 65.6077) | 3 |
| <i>Conversions</i> | 4 |
| <i>Details</i> | 6 |
| <i>Harmonies</i> | 12 |
| <i>Previews</i> | 24 |
| <i>Color Blindness Simulation</i> | 28 |
| <i>CSS Examples</i> | 31 |

Color

**XYZ(62.7717, 61.0787,
65.6077)**

Conversions

Conversions Part 1

| Format | Color |
|---------------|---------------------------|
| Hex | E3C6CC |
| RGB | 227, 198, 204 |
| RGB Percent | 89%, 78%, 80% |
| CMY | 0.1098, 0.2235, 0.2000 |
| CMYK | 0.00, 0.13, 0.10, 0.11 |
| HSL | 348°, 34%, 83% |
| HSV | 348°, 13%, 89% |
| XYZ | 62.7717, 61.0787, 65.6077 |
| YIQ | 207.3550, 15.3580, 8.0140 |

Conversions

Conversions Part 2

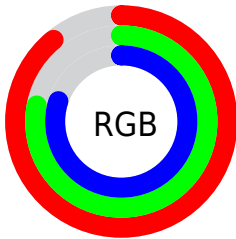
| Format | Color |
|-------------------------------------|-------------------------------|
| R _Y B | 227, 198, 204 |
| Decimal | 14927564 |
| CIE Lab | 82.42, 11.19, 0.77 |
| CIE LCh | 82, 11.221, 3.915 |
| Yxy | 61.0787, 0.3313, 0.3224 |
| Android (android.graphics.Color) | 4293117644 (0xFFE3C6CC) |
| YUV | 207.3550, -1.6540, 17.2287 |
| Hunter-Lab | 78.1529, 6.6021, 4.9343 |

Details

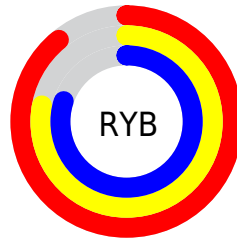
The XYZ color **62.7717, 61.0787, 65.6077** is a light color, and the websafe version is hex **FFCCCC**. A complement of this color would be **63.8113, 72.1659, 78.9763**, and the grayscale version is **59.5419, 62.6427, 68.2179**.

A 20% lighter version of the original color is **95.0500, 100.0000, 108.9000**, and **32.2729, 30.8065, 33.0994** is the 20% darker color. If you saturate the color by 10%, you get **55.9308, 50.6550, 53.2814**, and if you desaturate by 10%, it is **70.6434, 73.1629, 79.5110**.

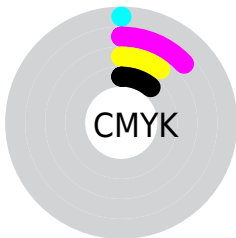
Distribution



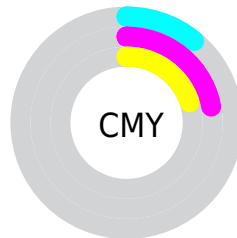
- Red (89%)
- Green (78%)
- Blue (80%)



- Red (89%)
- Yellow (78%)
- Blue (80%)



- Cyan (0%)
- Magenta (13%)
- Yellow (10%)
- Black (11%)



- Cyan (11%)
- Magenta (22%)
- Yellow (20%)

Brightness & Saturation Gradients

These gradients show how the XYZ color 62.7717, 61.0787, 65.6077 changes by changing the brightness by 10 percent. The first figure shows a shift by +10% for each color and the second figure -10%.

Similar to the brightness gradients but the following saturation gradients show a change of the XYZ color 62.7717, 61.0787, 65.6077 by changing the saturation by 10% instead.

62.7717, 61.0787,
65.6077

62.7717, 61.0787,
65.6077

424.4133,
428.5625, 463.3384

45.9145, 44.2887,
47.4995

107.9237,
106.3929, 114.5447

32.3827, 30.8975,
33.0736

136.9493,
135.6858, 146.2107

21.8109, 20.5208,
21.9112

170.7617,
169.9152, 183.2329

13.8339, 12.7742,
13.5940

209.7262,
209.4654, 226.0301

8.0861, 7.2732,
7.7033

254.2083,
254.7209, 275.0207

4.2024, 3.6336,
3.8207

304.5733,

1.8173, 1.4708,

306.0659, 330.6233

1.5275

361.1865,
363.8850, 393.2563

■ 0.5280, 0.2680,
0.2383

■ 0.0000, 0.0000,
0.0000

■ 62.7717, 61.0787,
65.6077

■ 62.7717, 61.0787,
65.6077

■ 55.9308, 50.6550,
53.2814

■ 70.6434, 73.1629,
79.5110

■ 50.0725, 41.8113,
42.4719

■ 79.5811, 86.9674,
95.0405

■ 45.1526, 34.4726,
33.1213

■ 85.4888, 95.0710,
108.4525

■ 41.1213, 28.5546,
25.1660

■ 37.9241, 23.9646,
18.5379

■ 35.5006, 20.5990,
13.1630

■ 33.7815, 18.3385,
8.9593

■ 32.6846, 17.0395,
5.8348

■ 32.1907, 16.5358,
4.1782

Harmonies

Analogous

The Analogous color harmony consists of three colors that are next to each other on the color wheel.



62.2899, 61.0787, 72.4757



62.7717, 61.0787, 65.6077



61.9609, 61.0787, 59.4114

Triad

The Triadic color harmony groups three colors that are evenly spaced from another and form a triangle on the color wheel.



62.7717, 61.0787, 65.6077



55.5209, 61.0787, 56.1456



56.0514, 61.0787, 79.0712

Complementary

The Complementary color scheme is a pair of colors which are on the opposite of each other on the color wheel.



62.7717, 61.0787, 65.6077



63.8113, 72.1659, 78.9763

Split Complementary

Split-complementary colors differ from the complementary color scheme. The scheme consists of three colors, the original color and two neighbors of the complement color.



54.3139, 61.0787, 74.1404



62.7717, 61.0787, 65.6077



54.0136, 61.0787, 60.8702

Square

The Square scheme is like the rectangle color scheme, but the four colors are evenly spaced on the color wheel.



62.7717, 61.0787, 65.6077



57.7395, 61.0787, 54.1913



53.5778, 61.0787, 67.4091



58.3685, 61.0787, 80.5540

Rectangle

The Rectangle color scheme consists of four colors that form a rectangle on the color wheel.



62.7717, 61.0787, 65.6077



60.8092, 61.0787, 56.4021



53.5778, 61.0787, 67.4091



55.3823, 61.0787, 77.7461

Sweetspot

The Sweet Spot groups the original color and five complimentary colors.



62.7734, 61.0814, 65.6090



90.6064, 93.1537, 101.1273



63.7937, 61.2648, 81.1367



19.2200, 19.6718, 21.3407



0.0000, 0.0000, 0.0000



20.3446, 21.4041, 23.3091

Same Dimension

The Same Dimension uses a secret algorithm to generate beautiful new colors.



62.7734, 61.0814, 65.6090



79.5327, 76.1746, 81.5023



63.9970, 64.6575, 62.5365



14.4983, 14.4165, 15.5584



18.8076, 9.6573, 2.6158



1.4231, 0.7269, 0.3683

Inverse Universe

The Inverse Universe completely reimagines the original color for something new.



62.7734, 61.0814, 65.6090



79.5327, 76.1746, 81.5023



62.4310, 68.1038, 82.5286



14.4983, 14.4165, 15.5584



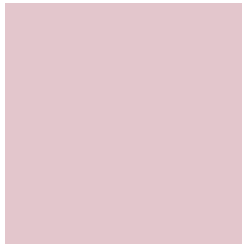
18.8076, 9.6573, 2.6158



1.4231, 0.7269, 0.3683

Previews

White Background



This preview shows how the XYZ color 62.7717, 61.0787, 65.6077 looks on a white background.

Color Contrast Check

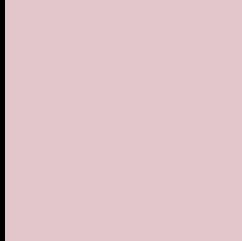
Large Text (above 18pt) WCAG AA × Fail

Any Text WCAG AA × Fail

Large Text (above 18pt) WCAG AAA × Fail

Any Text WCAG AAA × Fail

Black Background



This preview shows how the XYZ color 62.7717, 61.0787, 65.6077 looks on a black background.

Color Contrast Check

Large Text (above 18pt) WCAG AA ✓ Pass

Any Text WCAG AA ✓ Pass

Large Text (above 18pt) WCAG AAA ✓ Pass

Any Text WCAG AAA ✓ Pass

If you want to check with other color combinations, try the [Color Contrast Checker](#).

XYZ 62.7717, 61.0787, 65.6077

Background



This preview shows how black text looks on a background with the XYZ color 62.7717, 61.0787, 65.6077.



This preview shows how white text looks on a background with the XYZ color 62.7717, 61.0787,

Color Blindness Simulation

Color vision deficiency is a very complex topic, and I could not describe the different causes any better than Wikipedia does, so if you want to learn more, you should check out their [article about color blindness](#).

Dichromacy



Original Color

62.7717, 61.0787, 65.6077

Protanopia

58.9905, 61.1497, 68.3684

Deuteranopia

62.3738, 61.2140, 65.6548



Tritanopia

63.8448, 61.1800, 70.7313

Trichromacy



Original Color

62.7717, 61.0787, 65.6077

Protanomaly

60.4073, 61.1931, 67.6591

Deuteranomaly

62.6865, 61.3752, 65.6694

Tritanomaly

63.4698, 61.0299, 68.7563

Monochromacy



Original Color

62.7717, 61.0787, 65.6077

Achromatopsia

59.3074, 62.3960, 67.9493

Achromatomaly

60.4650, 61.9381, 67.1609

CSS Examples

Text

The CSS property to change the color of the text to XYZ 62.7717, 61.0787, 65.6077 is called "color". The color property can be set on classes, ids or directly on the HTML element.

This example shows how text in the color `rgb(227, 198, 204)` looks like.

```
.text, #text, p{  
    color:rgb(227, 198, 204)  
}
```

If you want to add a text shadow in that color use the text-shadow property, you can generate a text shadow directly with our [CSS Text Shadow Generator](#).

Here you see how black text with a 4 pixel rgb(227, 198, 204) colored shadow looks like.

```
.shadow{ text-shadow: 4px 4px 2px rgb(227, 198, 204) }
```

Border

The CSS property to change the border of an element to XYZ 62.7717, 61.0787, 65.6077 is called "border". The border property can be set on classes, ids or directly on the HTML element.

This example shows the color as border, it can be applied via the CSS property "border" or "border-color".

```
.border, #border, table{ border:4px solid rgb(227, 198, 204) }
```


If only the border color should be changed use the property `border-color`.

```
.border{ border-color:rgb(227, 198, 204) }
```

If you want to add a box shadow in that color use:

Here you see how a box with a 4 pixel `rgb(227, 198, 204)` colored shadow looks like.

```
.boxshadow{ -moz-box-shadow:4px 4px 4px  
4px rgb(227, 198, 204); -webkit-box-  
shadow:4px 4px 4px 4px rgb(227, 198, 204);  
box-shadow:4px 4px 4px 4px rgb(227, 198,  
204) }
```

Background

The CSS property to change the background color of an element to XYZ 62.7717, 61.0787, 65.6077 is called "background". The background property can be set on classes, ids or directly on the HTML element.

```
.background, #background, body{  
background: rgb(227, 198, 204) }
```

If only the background color should be changed can be used:

```
.background{ background-color: rgb(227,  
198, 204) }
```

This example shows the color as background, it is applied via the CSS property "background".

To optimize and compress your CSS code, you can use our [online CSS compressor and optimizer](#) based on csstidy. If you want to create a linear or radial gradient as background or border, check our [CSS Gradient Generator](#).

Hey! You found this booklet interesting? Support Converting Colors with the new Membership Option!

The pro membership hides all ads, plus gives you double the colors in the color bucket, and more awesome pro features!

[Learn more, Memberships starting at \\$2.50/m!](#)

**Follow me
on Twitter!**

@ConvertingColor