

Converting Colors

XYZ(62.7775, 62.1671, 70.4460)

Have a look what the booklet for
XYZ(62.7775, 62.1671, 70.4460)
contains.

XYZ(62.7687, 62.0060, 70.2881)	3
<i>Conversions</i>	4
<i>Details</i>	6
<i>Harmonies</i>	12
<i>Previews</i>	24
<i>Color Blindness Simulation</i>	28
<i>CSS Examples</i>	31

Color

**XYZ(62.7687, 62.0060,
70.2881)**

Conversions

Conversions Part 1

Format	Color
Hex	DEC9D3
RGB	222, 201, 211
RGB Percent	87%, 79%, 83%
CMY	0.1294, 0.2117, 0.1725
CMYK	0.00, 0.09, 0.05, 0.13
HSL	331°, 24%, 83%
HSV	331°, 9%, 87%
XYZ	62.7687, 62.0060, 70.2881
YIQ	208.4190, 9.3060, 7.5620

Conversions

Conversions Part 2

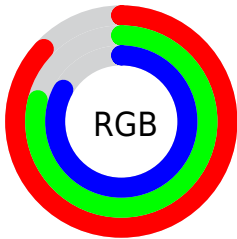
Format	Color
R _Y B	222, 201, 211
Decimal	14600659
CIE Lab	82.92, 9.05, -2.30
CIE LCh	83, 9.341, 345.716
Yxy	62.0060, 0.3218, 0.3179
Android (android.graphics.Color)	4292790739 (0xFFDEC9D3)
YUV	208.4190, 1.2724, 11.9105
Hunter-Lab	78.7439, 4.4850, 2.1975

Details

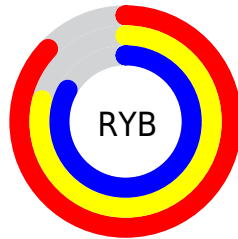
The XYZ color **62.7687, 62.0060, 70.2881** is a light color, and the websafe version is hex **CCCCCC**. A complement of this color would be **62.0947, 69.4151, 72.4164**, and the grayscale version is **60.2153, 63.3512, 68.9895**.

A 20% lighter version of the original color is **95.0500, 100.0000, 108.9000**, and **32.4559, 31.5172, 36.2711** is the 20% darker color. If you saturate the color by 10%, you get **56.5575, 51.8327, 61.2826**, and if you desaturate by 10%, it is **69.8368, 73.7228, 80.1013**.

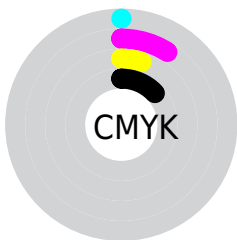
Distribution



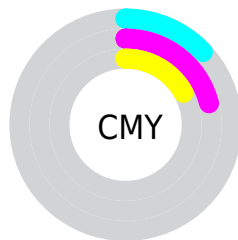
- Red (87%)
- Green (79%)
- Blue (83%)



- Red (87%)
- Yellow (79%)
- Blue (83%)



- Cyan (0%)
- Magenta (9%)
- Yellow (5%)
- Black (13%)



- Cyan (13%)
- Magenta (21%)
- Yellow (17%)

Brightness & Saturation Gradients

These gradients show how the XYZ color 62.7687, 62.0060, 70.2881 changes by changing the brightness by 10 percent. The first figure shows a shift by +10% for each color and the second figure -10%.

Similar to the brightness gradients but the following saturation gradients show a change of the XYZ color 62.7687, 62.0060, 70.2881 by changing the saturation by 10% instead.

62.7687, 62.0060,
70.2881

62.7687, 62.0060,
70.2881

424.4026,
431.9530, 480.3774

45.9121, 45.0375,
51.2832

107.9194,
107.7342, 121.3045

32.3808, 31.4870,
36.0557

136.9442,
137.2627, 154.1530

21.8094, 20.9700,
24.1872

170.7558,
171.7468, 192.4532

13.8328, 13.1021,
15.2591

209.7195,
211.5707, 236.6235

8.0854, 7.4989,
8.8528

254.2007,
257.1188, 287.0826

4.2019, 3.7760,
4.5498

304.5647,

1.8170, 1.5491,

308.7757, 344.2489

1.9315

361.1768,
366.9256, 408.5410

■ 0.5279, 0.3229,
0.5127

■ 0.0000, 0.0000,
0.0000

■ 62.7687, 62.0060,
70.2881

■ 62.7687, 62.0060,
70.2881

■ 56.5575, 51.8327,
61.2826

■ 69.8368, 73.7228,
80.1013

■ 51.1639, 43.1299,
53.0584

■ 77.7888, 87.0358,
90.7396

■ 46.5530, 35.8310,
45.5935

■ 82.5028, 93.6971,
100.8400

■ 42.6855, 29.8610,
38.8630

■ 83.9346, 94.2698,
108.3798

■ 39.5183, 25.1378,
32.8404

■ 37.0038, 21.5700,
27.4973

■ 35.0878, 19.0536,
22.8023

■ 33.7065, 17.4657,
18.7205

■ 32.7561, 16.6033,
15.2029

Harmonies

Analogous

The Analogous color harmony consists of three colors that are next to each other on the color wheel.



61.7514, 62.0060, 75.5592



62.7687, 62.0060, 70.2881



62.7426, 62.0060, 64.5536

Triad

The Triadic color harmony groups three colors that are evenly spaced from another and form a triangle on the color wheel.



62.7687, 62.0060, 70.2881



57.8919, 62.0060, 57.3888



56.2716, 62.0060, 75.7708

Complementary

The Complementary color scheme is a pair of colors which are on the opposite of each other on the color wheel.



62.7687, 62.0060, 70.2881



62.0947, 69.4151, 72.4164

Split Complementary

Split-complementary colors differ from the complementary color scheme. The scheme consists of three colors, the original color and two neighbors of the complement color.



55.2844, 62.0060, 70.5635



62.7687, 62.0060, 70.2881



56.2052, 62.0060, 60.0611

Square

The Square scheme is like the rectangle color scheme, but the four colors are evenly spaced on the color wheel.



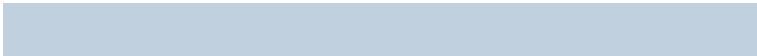
62.7687, 62.0060, 70.2881



59.8957, 62.0060, 57.3244



55.2604, 62.0060, 64.8139



57.9843, 62.0060, 78.8447

Rectangle

The Rectangle color scheme consists of four colors that form a rectangle on the color wheel.



62.7687, 62.0060, 70.2881



62.1360, 62.0060, 61.2431



55.2604, 62.0060, 64.8139



55.8456, 62.0060, 74.1990

Sweetspot

The Sweet Spot groups the original color and five complimentary colors.



62.7705, 62.0087, 70.2894



92.0193, 94.9603, 104.7395



61.1819, 61.0249, 77.6625



19.5265, 20.0443, 22.1843



0.0000, 0.0000, 0.0000



20.3446, 21.4041, 23.3091

Same Dimension

The Same Dimension uses a secret algorithm to generate beautiful new colors.



62.7705, 62.0087, 70.2894



84.4689, 82.4802, 94.1438



61.6373, 61.6861, 63.9195



13.9776, 13.8087, 15.6522



19.4844, 9.8608, 9.2166



1.3956, 0.7015, 0.8760

Inverse Universe

The Inverse Universe completely reimagines the original color for something new.



62.7705, 62.0087, 70.2894



84.4689, 82.4802, 94.1438



63.3025, 69.7497, 79.2347



13.9776, 13.8087, 15.6522



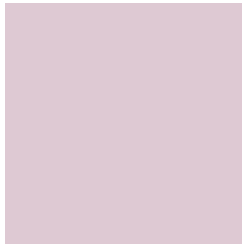
19.4844, 9.8608, 9.2166



1.3956, 0.7015, 0.8760

Previews

White Background



This preview shows how the XYZ color 62.7687, 62.0060, 70.2881 looks on a white background.

Color Contrast Check

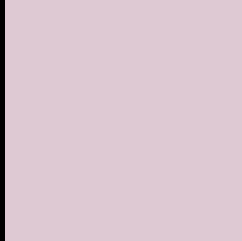
Large Text (above 18pt) WCAG AA × Fail

Any Text WCAG AA × Fail

Large Text (above 18pt) WCAG AAA × Fail

Any Text WCAG AAA × Fail

Black Background



This preview shows how the XYZ color 62.7687, 62.0060, 70.2881 looks on a black background.

Color Contrast Check

Large Text (above 18pt) WCAG AA ✓ Pass

Any Text WCAG AA ✓ Pass

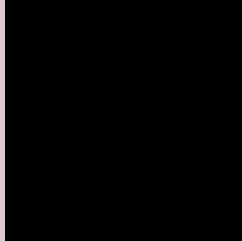
Large Text (above 18pt) WCAG AAA ✓ Pass

Any Text WCAG AAA ✓ Pass

If you want to check with other color combinations, try the [Color Contrast Checker](#).

XYZ 62.7687, 62.0060, 70.2881

Background



This preview shows how black text looks on a background with the XYZ color 62.7687, 62.0060, 70.2881.



This preview shows how white text looks on a background with the XYZ color 62.7687, 62.0060,

Color Blindness Simulation

Color vision deficiency is a very complex topic, and I could not describe the different causes any better than Wikipedia does, so if you want to learn more, you should check out their [article about color blindness](#).

Dichromacy



Original Color

62.7687, 62.0060, 70.2881

Protanopia

59.9813, 61.9276, 72.4102

Deuteranopia

63.1526, 61.8590, 70.2395



Tritanopia

63.4804, 61.9544, 73.5784

Trichromacy



Original Color

62.7687, 62.0060, 70.2881

Protanomaly

61.0437, 62.1360, 71.7269

Deuteranomaly

62.8436, 61.6997, 70.2250

Tritanomaly

63.2233, 61.8516, 72.2246

Monochromacy



Original Color

62.7687, 62.0060, 70.2881

Achromatopsia

59.9535, 63.0757, 68.6895

Achromatomaly

60.7805, 62.4122, 69.1649

CSS Examples

Text

The CSS property to change the color of the text to XYZ 62.7687, 62.0060, 70.2881 is called "color". The color property can be set on classes, ids or directly on the HTML element.

This example shows how text in the color `rgb(222, 201, 211)` looks like.

```
.text, #text, p{  
    color:rgb(222, 201, 211)  
}
```

If you want to add a text shadow in that color use the text-shadow property, you can generate a text shadow directly with our [CSS Text Shadow Generator](#).

Here you see how black text with a 4 pixel rgb(222, 201, 211) colored shadow looks like.

```
.shadow{ text-shadow: 4px 4px 2px rgb(222, 201, 211) }
```

Border

The CSS property to change the border of an element to XYZ 62.7687, 62.0060, 70.2881 is called "border". The border property can be set on classes, ids or directly on the HTML element.

This example shows the color as border, it can be applied via the CSS property "border" or "border-color".

```
.border, #border, table{ border:4px solid rgb(222, 201, 211) }
```


If only the border color should be changed use the property border-color.

```
.border{ border-color:rgb(222, 201, 211) }
```

If you want to add a box shadow in that color use:

Here you see how a box with a 4 pixel rgb(222, 201, 211) colored shadow looks like.

```
.boxshadow{ -moz-box-shadow:4px 4px 4px  
4px rgb(222, 201, 211); -webkit-box-  
shadow:4px 4px 4px 4px rgb(222, 201, 211);  
box-shadow:4px 4px 4px 4px rgb(222, 201,  
211) }
```

Background

The CSS property to change the background color of an element to XYZ 62.7687, 62.0060, 70.2881 is called "background". The background property can be set on classes, ids or directly on the HTML element.

```
.background, #background, body{  
background: rgb(222, 201, 211) }
```

If only the background color should be changed can be used:

```
.background{ background-color: rgb(222,  
201, 211) }
```

This example shows the color as background, it is applied via the CSS property "background".

To optimize and compress your CSS code, you can use our [online CSS compressor and optimizer](#) based on csstidy. If you want to create a linear or radial gradient as background or border, check our [CSS Gradient Generator](#).

Hey! You found this booklet interesting? Support Converting Colors with the new Membership Option!

The pro membership hides all ads, plus gives you double the colors in the color bucket, and more awesome pro features!

[Learn more, Memberships starting at \\$2.50/m!](#)

**Follow me
on Twitter!**

@ConvertingColor