

Converting Colors

XYZ(62.7900, 62.7126, 64.6476)

Have a look what the booklet for
XYZ(62.7900, 62.7126, 64.6476)
contains.

XYZ(62.7571, 62.8234, 64.6956)	3
<i>Conversions</i>	4
<i>Details</i>	6
<i>Harmonies</i>	12
<i>Previews</i>	24
<i>Color Blindness Simulation</i>	28
<i>CSS Examples</i>	31

Color

**XYZ(62.7571, 62.8234,
64.6956)**

Conversions

Conversions Part 1

Format	Color
Hex	E0CBCA
RGB	224, 203, 202
RGB Percent	88%, 80%, 79%
CMY	0.1216, 0.2039, 0.2078
CMYK	0.00, 0.09, 0.10, 0.12
HSL	3°, 26%, 84%
HSV	3°, 10%, 88%
XYZ	62.7571, 62.8234, 64.6956
YIQ	209.1650, 12.8370, 4.1410

Conversions

Conversions Part 2

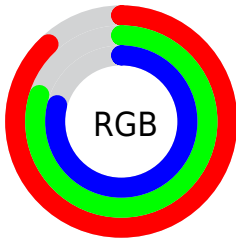
Format	Color
RYB	224, 203, 202
Decimal	14732234
CIELab	83.35, 7.16, 3.15
CIElCh	83, 7.823, 23.769
Yxy	62.8234, 0.3298, 0.3302
Android (android.graphics.Color)	4292922314 (0xFFE0CBCA)
YUV	209.1650, -3.5323, 13.0103
Hunter-Lab	79.2612, 2.6248, 7.0884

Details

The XYZ color **62.7571, 62.8234, 64.6956** is a light color, and the websafe version is hex **CCCCCC**. A complement of this color would be **64.1992, 70.7126, 80.7871**, and the grayscale version is **60.7299, 63.8926, 69.5791**.

A 20% lighter version of the original color is **95.0500, 100.0000, 108.9000**, and **32.4549, 32.0680, 32.4962** is the 20% darker color. If you saturate the color by 10%, you get **55.5902, 52.4299, 50.1575**, and if you desaturate by 10%, it is **71.0087, 74.7687, 81.4961**.

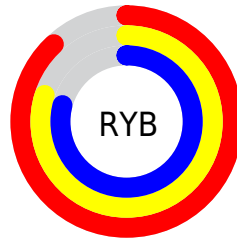
Distribution



Red (88%)

Green (80%)

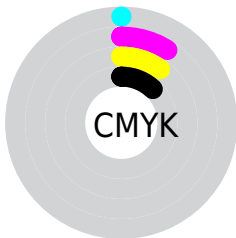
Blue (79%)



Red (88%)

Yellow (80%)

Blue (79%)

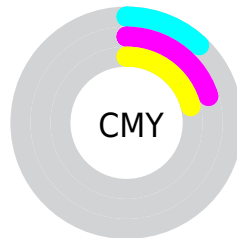


Cyan (0%)

Magenta (9%)

Yellow (10%)

Black (12%)



Cyan (12%)

Magenta (20%)

Yellow (21%)

Brightness & Saturation Gradients

These gradients show how the XYZ color 62.7571, 62.8234, 64.6956 changes by changing the brightness by 10 percent. The first figure shows a shift by +10% for each color and the second figure -10%.

Similar to the brightness gradients but the following saturation gradients show a change of the XYZ color 62.7571, 62.8234, 64.6956 by changing the saturation by 10% instead.

62.7571, 62.8234,
64.6956

62.7571, 62.8234,
64.6956

424.3611,
434.9283, 459.9735

45.9026, 45.6984,
46.7645

107.9028,
108.9147, 113.2212

32.3733, 32.0079,
32.4965

136.9247,
138.6497, 144.6528

21.8037, 21.3675,
21.4731

170.7332,
173.3569, 181.4216

13.8285, 13.3929,
13.2756

209.6936,
213.4206, 223.9463

8.0824, 7.6996,
7.4857

254.1712,
259.2251, 272.6452

4.2000, 3.9034,
3.6846

304.5314,

1.8159, 1.6197,

311.1550, 327.9371

1.4540

361.1396,
369.5946, 390.2403

■ 0.5272, 0.3708,
0.1833

■ 0.0000, 0.0000,
0.0000

■ 62.7571, 62.8234,
64.6956

■ 62.7571, 62.8234,
64.6956

■ 55.5902, 52.4299,
50.1575

■ 71.0087, 74.7687,
81.4961

■ 49.4579, 43.5168,
37.7813

■ 80.3820, 88.3171,
100.6457

■ 44.3140, 36.0191,
27.4651

■ 84.5508, 94.5875,
108.4086

■ 40.1067, 29.8641,
19.0970

■ 36.7797, 24.9724,
12.5547

■ 34.2703, 21.2565,
7.7018

■ 32.5079, 18.6175,
4.3831

■ 31.4095, 16.9405,
2.4146

■ 30.8582, 16.0787,
1.4886

Harmonies

Analogous

The Analogous color harmony consists of three colors that are next to each other on the color wheel.



63.0244, 62.8234, 69.4263



62.7571, 62.8234, 64.6956



61.6670, 62.8234, 61.1190

Triad

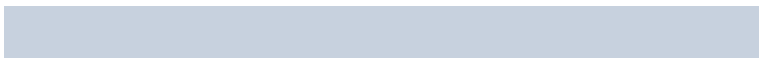
The Triadic color harmony groups three colors that are evenly spaced from another and form a triangle on the color wheel.



62.7571, 62.8234, 64.6956



57.1107, 62.8234, 63.0127



59.3573, 62.8234, 78.1504

Complementary

The Complementary color scheme is a pair of colors which are on the opposite of each other on the color wheel.



62.7571, 62.8234, 64.6956



64.1992, 70.7126, 80.7871

Split Complementary

Split-complementary colors differ from the complementary color scheme. The scheme consists of three colors, the original color and two neighbors of the complement color.



57.7983, 62.8234, 76.2461



62.7571, 62.8234, 64.6956



56.5172, 62.8234, 67.3917

Square

The Square scheme is like the rectangle color scheme, but the four colors are evenly spaced on the color wheel.



62.7571, 62.8234, 64.6956



58.4024, 62.8234, 60.1801



56.7666, 62.8234, 72.2515



61.0405, 62.8234, 77.3449

Rectangle

The Rectangle color scheme consists of four colors that form a rectangle on the color wheel.



62.7571, 62.8234, 64.6956



60.6312, 62.8234, 59.7940



56.7666, 62.8234, 72.2515



58.8017, 62.8234, 77.8032

Sweetspot

The Sweet Spot groups the original color and five complimentary colors.



62.7589, 62.8262, 64.6969



91.5575, 94.9469, 101.7801



65.2171, 63.4314, 78.8077



19.4022, 20.0405, 21.3882



0.0000, 0.0000, 0.0000



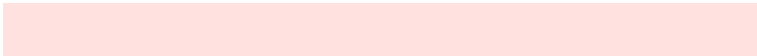
20.3446, 21.4041, 23.3091

Same Dimension

The Same Dimension uses a secret algorithm to generate beautiful new colors.



62.7589, 62.8262, 64.6969



81.8898, 80.9455, 82.1137



65.3811, 68.0707, 65.5710



13.7571, 13.8003, 14.2454



17.9803, 9.3986, 0.8664



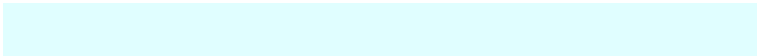
1.2643, 0.6874, 0.0660

Inverse Universe

The Inverse Universe completely reimagines the original color for something new.



64.1992, 70.7126, 80.7871



84.2308, 93.7637, 108.2665



61.4228, 65.1597, 79.8616



14.0602, 15.4595, 17.6306



21.8197, 31.1090, 45.9030



1.5292, 2.1899, 3.1873

Previews

White Background



This preview shows how the XYZ color 62.7571, 62.8234, 64.6956 looks on a white background.

Color Contrast Check

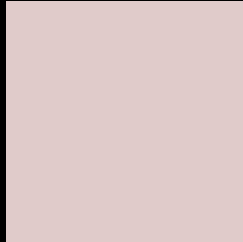
Large Text (above 18pt) WCAG AA × Fail

Any Text WCAG AA × Fail

Large Text (above 18pt) WCAG AAA × Fail

Any Text WCAG AAA × Fail

Black Background



This preview shows how the XYZ color 62.7571, 62.8234, 64.6956 looks on a black background.

Color Contrast Check

Large Text (above 18pt) WCAG AA ✓ Pass

Any Text WCAG AA ✓ Pass

Large Text (above 18pt) WCAG AAA ✓ Pass

Any Text WCAG AAA ✓ Pass

If you want to check with other color combinations, try the [Color Contrast Checker](#).

XYZ 62.7571, 62.8234, 64.6956

Background



This preview shows how black text looks on a background with the XYZ color 62.7571, 62.8234, 64.6956.



This preview shows how white text looks on a background with the XYZ color 62.7571, 62.8234,

Color Blindness Simulation

Color vision deficiency is a very complex topic, and I could not describe the different causes any better than Wikipedia does, so if you want to learn more, you should check out their [article about color blindness](#).

Dichromacy



Original Color

62.7571, 62.8234, 64.6956

Protanopia

60.3633, 62.9823, 66.1021

Deuteranopia

64.1804, 62.8606, 64.6277



Tritanopia

64.7751, 62.9518, 74.3825

Trichromacy



Original Color

62.7571, 62.8234, 64.6956

Protanomaly

61.1697, 63.0533, 65.4464

Deuteranomaly

63.7761, 62.9993, 64.6758

Tritanomaly

64.0555, 63.0021, 71.0719

Monochromacy



Original Color

62.7571, 62.8234, 64.6956

Achromatopsia

60.6036, 63.7597, 69.4343

Achromatomaly

61.1850, 63.3780, 67.4009

CSS Examples

Text

The CSS property to change the color of the text to XYZ 62.7571, 62.8234, 64.6956 is called "color". The color property can be set on classes, ids or directly on the HTML element.

This example shows how text in the color rgb(224, 203, 202) looks like.

```
.text, #text, p{  
    color:rgb(224, 203, 202)  
}
```

If you want to add a text shadow in that color use the text-shadow property, you can generate a text shadow directly with our [CSS Text Shadow Generator](#).

Here you see how black text with a 4 pixel rgb(224, 203, 202) colored shadow looks like.

```
.shadow{ text-shadow: 4px 4px 2px rgb(224, 203, 202) }
```

Border

The CSS property to change the border of an element to XYZ 62.7571, 62.8234, 64.6956 is called "border". The border property can be set on classes, ids or directly on the HTML element.

This example shows the color as border, it can be applied via the CSS property "border" or "border-color".

```
.border, #border, table{ border:4px solid rgb(224, 203, 202) }
```


If only the border color should be changed use the property `border-color`.

```
.border{ border-color:rgb(224, 203, 202) }
```

If you want to add a box shadow in that color use:

Here you see how a box with a 4 pixel `rgb(224, 203, 202)` colored shadow looks like.

```
.boxshadow{ -moz-box-shadow:4px 4px 4px  
4px rgb(224, 203, 202); -webkit-box-  
shadow:4px 4px 4px 4px rgb(224, 203, 202);  
box-shadow:4px 4px 4px 4px rgb(224, 203,  
202) }
```

Background

The CSS property to change the background color of an element to XYZ 62.7571, 62.8234, 64.6956 is called "background". The background property can be set on classes, ids or directly on the HTML element.

```
.background, #background, body{  
background: rgb(224, 203, 202) }
```

If only the background color should be changed can be used:

```
.background{ background-color: rgb(224,  
203, 202) }
```

This example shows the color as background, it is applied via the CSS property "background".

To optimize and compress your CSS code, you can use our [online CSS compressor and optimizer](#) based on csstidy. If you want to create a linear or radial gradient as background or border, check our [CSS Gradient Generator](#).

Hey! You found this booklet interesting? Support Converting Colors with the new Membership Option!

The pro membership hides all ads, plus gives you double the colors in the color bucket, and more awesome pro features!

[Learn more, Memberships starting at \\$2.50/m!](#)

**Follow me
on Twitter!**

@ConvertingColor