

Converting Colors

XYZ(62.8199, 60.9598, 62.4245)

Have a look what the booklet for
XYZ(62.8199, 60.9598, 62.4245)
contains.

XYZ(62.9082, 60.8790, 62.4680)	3
<i>Conversions</i>	4
<i>Details</i>	6
<i>Harmonies</i>	12
<i>Previews</i>	24
<i>Color Blindness Simulation</i>	28
<i>CSS Examples</i>	31

Color

**XYZ(62.9082, 60.8790,
62.4680)**

Conversions

Conversions Part 1

Format	Color
Hex	E6C5C7
RGB	230, 197, 199
RGB Percent	90%, 77%, 78%
CMY	0.0980, 0.2274, 0.2196
CMYK	0.00, 0.14, 0.13, 0.10
HSL	356°, 40%, 84%
HSV	356°, 14%, 90%
XYZ	62.9082, 60.8790, 62.4680
YIQ	207.0950, 19.0260, 7.6180

Conversions

Conversions Part 2

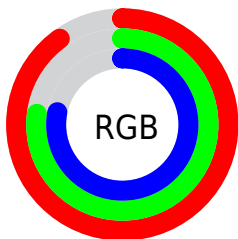
Format	Color
R _Y B	230, 197, 199
Decimal	15123911
CIE Lab	82.31, 11.97, 3.32
CIE LCh	82, 12.425, 15.497
Yxy	60.8790, 0.3378, 0.3269
Android (android.graphics.Color)	4293313991 (0xFFE6C5C7)
YUV	207.0950, -3.9908, 20.0877
Hunter-Lab	78.0250, 7.3731, 7.1490

Details

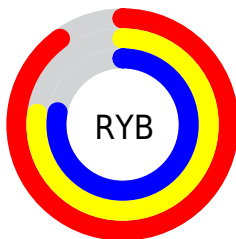
The XYZ color **62.9082, 60.8790, 62.4680** is a light color, and the websafe version is hex **FFCCCC**. A complement of this color would be **65.3288, 74.0670, 84.2557**, and the grayscale version is **59.3871, 62.4799, 68.0406**.

A 20% lighter version of the original color is **94.7318, 99.3636, 108.7939**, and **32.3889, 30.6879, 31.0043** is the 20% darker color. If you saturate the color by 10%, you get **55.7455, 50.2873, 48.5687**, and if you desaturate by 10%, it is **71.2274, 73.2122, 78.5119**.

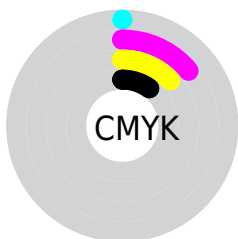
Distribution



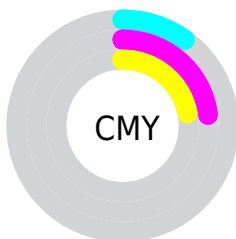
- Red (90%)
- Green (77%)
- Blue (78%)



- Red (90%)
- Yellow (77%)
- Blue (78%)



- Cyan (0%)
- Magenta (14%)
- Yellow (13%)
- Black (10%)



- Cyan (10%)
- Magenta (23%)
- Yellow (22%)

Brightness & Saturation Gradients

These gradients show how the XYZ color 62.9082, 60.8790, 62.4680 changes by changing the brightness by 10 percent. The first figure shows a shift by +10% for each color and the second figure -10%.

Similar to the brightness gradients but the following saturation gradients show a change of the XYZ color 62.9082, 60.8790, 62.4680 by changing the saturation by 10% instead.

62.9082, 60.8790,
62.4680

62.9082, 60.8790,
62.4680

424.9012,
427.8302, 451.6908

46.0253, 44.1275,
44.9727

108.1196,
106.1037, 109.9798

32.4705, 30.7708,
31.0932

137.1789,
135.3457, 140.8334

21.8784, 20.4244,
20.4107

171.0276,
169.5201, 176.9768

13.8837, 12.7039,
12.5069

210.0312,
209.0111, 218.8287

8.1210, 7.2250,
6.9632

254.5550,
254.2033, 266.8075

4.2249, 3.6032,
3.3610

304.9644,

1.8301, 1.4542,

305.4809, 321.3317

1.2818

361.6246,
363.2284, 382.8200

■ 0.5357, 0.2561,
0.0468

■ 0.0000, 0.0000,
0.0000

■ 62.9082, 60.8790,
62.4680

■ 62.9082, 60.8790,
62.4680

■ 55.7455, 50.2873,
48.5687

■ 71.2274, 73.2122,
78.5119

■ 49.6833, 41.3510,
36.7195

■ 80.7457, 87.3517,
96.7818

■ 44.6686, 33.9890,
26.8245

■ 86.4434, 95.5632,
108.4972

■ 40.6418, 28.1098,
18.7787

■ 37.5376, 23.6131,
12.4672

■ 35.2827, 20.3856,
7.7623

■ 33.7926, 18.2965,
4.5187

■ 32.9653, 17.1863,
2.5648

■ 32.7121, 16.8546,
1.9415

Harmonies

Analogous

The Analogous color harmony consists of three colors that are next to each other on the color wheel.



62.9324, 60.8790, 70.0047



62.9082, 60.8790, 62.4680



61.5051, 60.8790, 56.4247

Triad

The Triadic color harmony groups three colors that are evenly spaced from another and form a triangle on the color wheel.



62.9082, 60.8790, 62.4680



54.3090, 60.8790, 56.5855



56.5984, 60.8790, 81.4240

Complementary

The Complementary color scheme is a pair of colors which are on the opposite of each other on the color wheel.



62.9082, 60.8790, 62.4680



65.3288, 74.0670, 84.2557

Split Complementary

Split-complementary colors differ from the complementary color scheme. The scheme consists of three colors, the original color and two neighbors of the complement color.



54.3689, 60.8790, 77.2360



62.9082, 60.8790, 62.4680



53.0747, 60.8790, 62.7031

Square

The Square scheme is like the rectangle color scheme, but the four colors are evenly spaced on the color wheel.



62.9082, 60.8790, 62.4680



56.5144, 60.8790, 53.2091



53.0963, 60.8790, 70.2583



59.2342, 60.8790, 81.3490

Rectangle

The Rectangle color scheme consists of four colors that form a rectangle on the color wheel.



62.9082, 60.8790, 62.4680



60.0003, 60.8790, 53.8882



53.0963, 60.8790, 70.2583



55.7783, 60.8790, 80.4550

Sweetspot

The Sweet Spot groups the original color and five complimentary colors.



62.9099, 60.8817, 62.4693



90.3771, 93.0619, 99.9197



66.1825, 62.1097, 83.3638



19.1622, 19.6487, 21.0364



0.0000, 0.0000, 0.0000



20.3446, 21.4041, 23.3091

Same Dimension

The Same Dimension uses a secret algorithm to generate beautiful new colors.



62.9099, 60.8817, 62.4693



76.8685, 73.0411, 73.8477



66.0819, 67.5941, 62.3907



14.4122, 14.3821, 15.1049



18.5343, 9.5479, 1.1766



1.3821, 0.7106, 0.1529

Inverse Universe

The Inverse Universe completely reimagines the original color for something new.



62.9099, 60.8817, 62.4693



76.8685, 73.0411, 73.8477



61.7903, 66.5439, 84.4512



14.4122, 14.3821, 15.1049



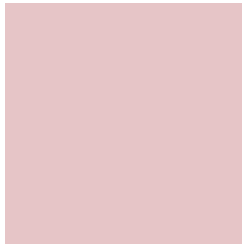
18.5343, 9.5479, 1.1766



1.3821, 0.7106, 0.1529

Previews

White Background



This preview shows how the XYZ color 62.9082, 60.8790, 62.4680 looks on a white background.

Color Contrast Check

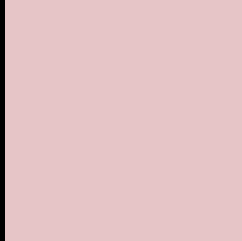
Large Text (above 18pt) WCAG AA × Fail

Any Text WCAG AA × Fail

Large Text (above 18pt) WCAG AAA × Fail

Any Text WCAG AAA × Fail

Black Background



This preview shows how the XYZ color 62.9082, 60.8790, 62.4680 looks on a black background.

Color Contrast Check

Large Text (above 18pt) WCAG AA ✓ Pass

Any Text WCAG AA ✓ Pass

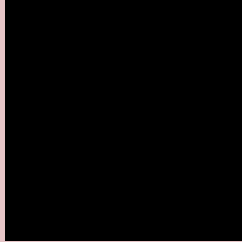
Large Text (above 18pt) WCAG AAA ✓ Pass

Any Text WCAG AAA ✓ Pass

If you want to check with other color combinations, try the [Color Contrast Checker](#).

XYZ 62.9082, 60.8790, 62.4680

Background



This preview shows how black text looks on a background with the XYZ color 62.9082, 60.8790, 62.4680.



This preview shows how white text looks on a background with the XYZ color 62.9082, 60.8790,

Color Blindness Simulation

Color vision deficiency is a very complex topic, and I could not describe the different causes any better than Wikipedia does, so if you want to learn more, you should check out their [article about color blindness](#).

Dichromacy



Original Color

62.9082, 60.8790, 62.4680

Protanopia

58.6669, 61.0528, 65.1922

Deuteranopia

62.1814, 60.8426, 62.4993



Tritanopia

64.1030, 60.6723, 69.3051

Trichromacy



Original Color

62.9082, 60.8790, 62.4680

Protanomaly

60.1626, 60.7893, 64.4397

Deuteranomaly

62.4978, 61.0057, 62.5141

Tritanomaly

63.8355, 60.9250, 66.7877

Monochromacy



Original Color

62.9082, 60.8790, 62.4680

Achromatopsia

59.3074, 62.3960, 67.9493

Achromatomaly

60.2794, 61.5186, 65.8240

CSS Examples

Text

The CSS property to change the color of the text to XYZ 62.9082, 60.8790, 62.4680 is called "color". The color property can be set on classes, ids or directly on the HTML element.

This example shows how text in the color `rgb(230, 197, 199)` looks like.

```
.text, #text, p{  
    color:rgb(230, 197, 199)  
}
```

If you want to add a text shadow in that color use the text-shadow property, you can generate a text shadow directly with our [CSS Text Shadow Generator](#).

Here you see how black text with a 4 pixel rgb(230, 197, 199) colored shadow looks like.

```
.shadow{ text-shadow: 4px 4px 2px rgb(230, 197, 199) }
```

Border

The CSS property to change the border of an element to XYZ 62.9082, 60.8790, 62.4680 is called "border". The border property can be set on classes, ids or directly on the HTML element.

This example shows the color as border, it can be applied via the CSS property "border" or "border-color".

```
.border, #border, table{ border:4px solid rgb(230, 197, 199) }
```


If only the border color should be changed use the property `border-color`.

```
.border{ border-color:rgb(230, 197, 199) }
```

If you want to add a box shadow in that color use:

Here you see how a box with a 4 pixel `rgb(230, 197, 199)` colored shadow looks like.

```
.boxshadow{ -moz-box-shadow:4px 4px 4px  
4px rgb(230, 197, 199); -webkit-box-  
shadow:4px 4px 4px 4px rgb(230, 197, 199);  
box-shadow:4px 4px 4px 4px rgb(230, 197,  
199) }
```

Background

The CSS property to change the background color of an element to XYZ 62.9082, 60.8790, 62.4680 is called "background". The background property can be set on classes, ids or directly on the HTML element.

```
.background, #background, body{  
background: rgb(230, 197, 199) }
```

If only the background color should be changed can be used:

```
.background{ background-color: rgb(230,  
197, 199) }
```

This example shows the color as background, it is applied via the CSS property "background".

To optimize and compress your CSS code, you can use our [online CSS compressor and optimizer](#) based on csstidy. If you want to create a linear or radial gradient as background or border, check our [CSS Gradient Generator](#).

Hey! You found this booklet interesting? Support Converting Colors with the new Membership Option!

The pro membership hides all ads, plus gives you double the colors in the color bucket, and more awesome pro features!

[Learn more, Memberships starting at \\$2.50/m!](#)

**Follow me
on Twitter!**

@ConvertingColor