

# Converting Colors

XYZ(62.8412, 63.5761, 66.0395)

Have a look what the booklet for  
XYZ(62.8412, 63.5761, 66.0395)  
contains.

<b>XYZ(62.8546, 63.5519, 66.0807)</b> .....	3
<b><i>Conversions</i></b> .....	4
<b><i>Details</i></b> .....	6
<b><i>Harmonies</i></b> .....	12
<b><i>Previews</i></b> .....	24
<b><i>Color Blindness Simulation</i></b> .....	28
<b><i>CSS Examples</i></b> .....	31

# **Color**

**XYZ(62.8546, 63.5519,  
66.0807)**

# Conversions

## Conversions Part 1

Format	Color
Hex	DECDCC
RGB	222, 205, 204
RGB Percent	87%, 80%, 80%
CMY	0.1294, 0.1961, 0.2000
CMYK	0.00, 0.08, 0.08, 0.13
HSL	3°, 21%, 84%
HSV	3°, 8%, 87%
XYZ	62.8546, 63.5519, 66.0807
YIQ	209.9690, 10.4530, 3.2930

# Conversions

## Conversions Part 2

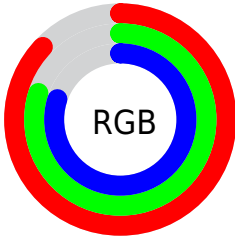
<b>Format</b>	<b>Color</b>
R <sub>Y</sub> B	222, 205, 204
Decimal	14601676
CIE Lab	83.73, 5.74, 2.62
CIE LCh	84, 6.307, 24.559
Yxy	63.5519, 0.3265, 0.3302
Android (android.graphics.Color)	4292791756 (0xFFDECDCC)
YUV	209.9690, -2.9427, 10.5512
Hunter-Lab	79.7194, 1.2289, 6.6572

# Details

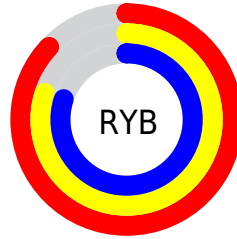
The XYZ color **62.8546, 63.5519, 66.0807** is a light color, and the websafe version is hex **CCCCCC**. A complement of this color would be **63.9429, 69.8229, 79.2149**, and the grayscale version is **61.2536, 64.4436, 70.1791**.

A 20% lighter version of the original color is **95.0500, 100.0000, 108.9000**, and **32.5080, 32.5507, 33.4237** is the 20% darker color. If you saturate the color by 10%, you get **55.6970, 53.1980, 51.4811**, and if you desaturate by 10%, it is **71.0671, 75.4067, 82.9059**.

# Distribution



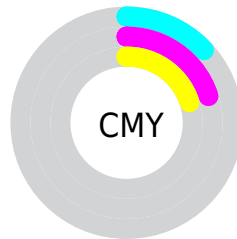
- Red (87%)
- Green (80%)
- Blue (80%)



- Red (87%)
- Yellow (80%)
- Blue (80%)



- Cyan (0%)
- Magenta (8%)
- Yellow (8%)
- Black (13%)



- Cyan (13%)
- Magenta (20%)
- Yellow (20%)

# Brightness & Saturation Gradients

These gradients show how the XYZ color 62.8546, 63.5519, 66.0807 changes by changing the brightness by 10 percent. The first figure shows a shift by +10% for each color and the second figure -10%.

Similar to the brightness gradients but the following saturation gradients show a change of the XYZ color 62.8546, 63.5519, 66.0807 by changing the saturation by 10% instead.



62.8546, 63.5519,  
66.0807

62.8546, 63.5519,  
66.0807

424.7097,  
437.5697, 465.0775

45.9818, 46.2878,  
47.8810

108.0427,  
109.9653, 115.2303

32.4360, 32.4730,  
33.3734

137.0887,  
139.8835, 147.0172

21.8519, 21.7231,  
22.1392

170.9232,  
174.7885, 184.1703

13.8641, 13.6535,  
13.7599

209.9114,  
215.0647, 227.1082

8.1073, 7.8801,  
7.8170

254.4189,  
261.0966, 276.2493

4.2161, 4.0183,  
3.8920

304.8108,

1.8251, 1.6838,

313.2684, 332.0122

1.5663

361.4526,  
371.9646, 394.8154

■ 0.5327, 0.4131,  
0.2666

■ 0.0000, 0.0000,  
0.0000

■ 62.8546, 63.5519,  
66.0807

■ 62.8546, 63.5519,  
66.0807

■ 55.6970, 53.1980,  
51.4811

■ 71.0671, 75.4067,  
82.9059

■ 49.5465, 44.2773,  
39.0101

■ 80.3693, 88.8102,  
102.0402

■ 44.3595, 36.7291,  
28.5695

■ 83.9345, 94.2697,  
108.3798

■ 40.0872, 30.4854,  
20.0518

■ 36.6763, 25.4721,  
13.3397

■ 34.0684, 21.6079,  
8.3029

■ 32.1973, 18.8018,  
4.7939

■ 30.9867, 16.9487,  
2.6392

■ 30.3380, 15.9199,  
1.5945

# Harmonies

## Analogous

The Analogous color harmony consists of three colors that are next to each other on the color wheel.



63.0896, 63.5519, 69.9217



62.8546, 63.5519, 66.0807



61.9589, 63.5519, 63.1777

# Triad

The Triadic color harmony groups three colors that are evenly spaced from another and form a triangle on the color wheel.



62.8546, 63.5519, 66.0807



58.2640, 63.5519, 64.8755



60.1524, 63.5519, 77.0568

# Complementary

The Complementary color scheme is a pair of colors which are on the opposite of each other on the color wheel.



62.8546, 63.5519, 66.0807



63.9429, 69.8229, 79.2149

# Split Complementary

Split-complementary colors differ from the complementary color scheme. The scheme consists of three colors, the original color and two neighbors of the complement color.



58.8757, 63.5519, 75.5875



62.8546, 63.5519, 66.0807



57.7961, 63.5519, 68.4778

# Square

The Square scheme is like the rectangle color scheme, but the four colors are evenly spaced on the color wheel.



62.8546, 63.5519, 66.0807



59.3059, 63.5519, 62.5006



58.0183, 63.5519, 72.4102



61.5159, 63.5519, 76.3558



# Rectangle

The Rectangle color scheme consists of four colors that form a rectangle on the color wheel.



62.8546, 63.5519, 66.0807



61.1148, 63.5519, 62.1146



58.0183, 63.5519, 72.4102



59.6991, 63.5519, 76.7987

# Sweetspot

The Sweet Spot groups the original color and five complimentary colors.



62.8564, 63.5547, 66.0821



92.7226, 96.6418, 104.1270



64.7823, 63.9420, 77.4048



19.8708, 20.7205, 22.3374



0.0000, 0.0000, 0.0000



20.3446, 21.4041, 23.3091

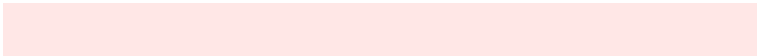


# Same Dimension

The Same Dimension uses a secret algorithm to generate beautiful new colors.



62.8564, 63.5547, 66.0821



84.0070, 84.0535, 86.2916



65.0453, 67.9326, 66.8117



13.7683, 13.8225, 14.2491



17.9997, 9.4373, 0.8729



1.2696, 0.6980, 0.0678

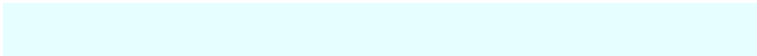


# Inverse Universe

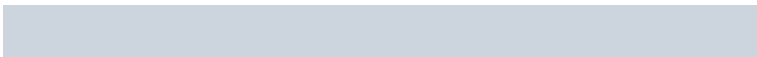
The Inverse Universe completely reimagines the original color for something new.



63.9429, 69.8229, 79.2149



85.8308, 94.5763, 108.3390



61.6560, 65.2492, 78.4527



14.0477, 15.4345, 17.6264



21.4925, 30.4546, 45.7939

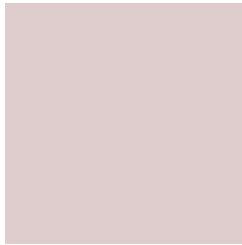


1.5100, 2.1515, 3.1809



# Previews

## White Background



This preview shows how the XYZ color 62.8546, 63.5519, 66.0807 looks on a white background.

## Color Contrast Check

Large Text (above 18pt) WCAG AA × Fail

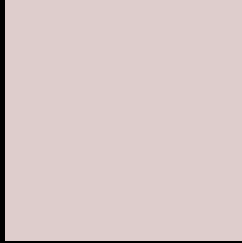
Any Text WCAG AA × Fail

Large Text (above 18pt) WCAG AAA × Fail

Any Text WCAG AAA × Fail



# Black Background



This preview shows how the XYZ color 62.8546, 63.5519, 66.0807 looks on a black background.

## Color Contrast Check

Large Text (above 18pt) WCAG AA ✓ Pass

Any Text WCAG AA ✓ Pass

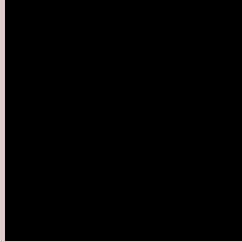
Large Text (above 18pt) WCAG AAA ✓ Pass

Any Text WCAG AAA ✓ Pass

If you want to check with other color combinations, try the [Color Contrast Checker](#).

# XYZ 62.8546, 63.5519, 66.0807

## Background



This preview shows how black text looks on a background with the XYZ color 62.8546, 63.5519, 66.0807.



This preview shows how white text looks on a background with the XYZ color 62.8546, 63.5519,



# Color Blindness Simulation

Color vision deficiency is a very complex topic, and I could not describe the different causes any better than Wikipedia does, so if you want to learn more, you should check out their [article about color blindness](#).

## Dichromacy



### Original Color

62.8546, 63.5519, 66.0807

### Protanopia

61.1370, 63.7141, 67.4683

### Deuteranopia

64.7731, 63.4718, 66.5950



## Tritanopia

64.8826, 63.6736, 75.8884

# Trichromacy



## Original Color

62.8546, 63.5519, 66.0807

## Protanomaly

61.6512, 63.6324, 66.7905

## Deuteranomaly

64.0539, 63.4505, 66.6288

## Tritanomaly

64.1619, 63.7287, 72.5375

# Monochromacy



## Original Color

62.8546, 63.5519, 66.0807

## Achromatopsia

61.2578, 64.4480, 70.1838

## Achromatomaly

61.6726, 63.9620, 68.7699

# CSS Examples

## Text

The CSS property to change the color of the text to XYZ 62.8546, 63.5519, 66.0807 is called "color". The color property can be set on classes, ids or directly on the HTML element.

This example shows how text in the color rgb(222, 205, 204) looks like.

```
.text, #text, p{  
    color:rgb(222, 205, 204)  
}
```

If you want to add a text shadow in that color use the text-shadow property, you can generate a text shadow directly with our [CSS Text Shadow Generator](#).

Here you see how black text with a 4 pixel rgb(222, 205, 204) colored shadow looks like.

```
.shadow{ text-shadow: 4px 4px 2px rgb(222, 205, 204) }
```

## Border

The CSS property to change the border of an element to XYZ 62.8546, 63.5519, 66.0807 is called "border". The border property can be set on classes, ids or directly on the HTML element.

This example shows the color as border, it can be applied via the CSS property "border" or "border-color".

```
.border, #border, table{ border:4px solid rgb(222, 205, 204) }
```



If only the border color should be changed use the property border-color.

```
.border{ border-color:rgb(222, 205, 204) }
```

If you want to add a box shadow in that color use:

Here you see how a box with a 4 pixel rgb(222, 205, 204) colored shadow looks like.

```
.boxshadow{ -moz-box-shadow:4px 4px 4px  
4px rgb(222, 205, 204); -webkit-box-  
shadow:4px 4px 4px 4px rgb(222, 205, 204);  
box-shadow:4px 4px 4px 4px rgb(222, 205,  
204) }
```

# Background

The CSS property to change the background color of an element to XYZ 62.8546, 63.5519, 66.0807 is called "background". The background property can be set on classes, ids or directly on the HTML element.

```
.background, #background, body{  
background: rgb(222, 205, 204) }
```

If only the background color should be changed can be used:

```
.background{ background-color: rgb(222,  
205, 204) }
```

This example shows the color as background, it is applied via the CSS property "background".

To optimize and compress your CSS code, you can use our [online CSS compressor and optimizer](#) based on csstidy. If you want to create a linear or radial gradient as background or border, check our [CSS Gradient Generator](#).

Hey! You found this booklet interesting? Support Converting Colors with the new Membership Option!

The pro membership hides all ads, plus gives you double the colors in the color bucket, and more awesome pro features!

**[Learn more, Memberships starting at \\$2.50/m!](#)**

**Follow me  
on Twitter!**

@ConvertingColor