

Converting Colors

XYZ(62.8640, 63.0130, 58.7125)

Have a look what the booklet for
XYZ(62.8640, 63.0130, 58.7125)
contains.

XYZ(62.8653, 63.0116, 58.7183)	3
<i>Conversions</i>	4
<i>Details</i>	6
<i>Harmonies</i>	12
<i>Previews</i>	24
<i>Color Blindness Simulation</i>	28
<i>CSS Examples</i>	31

Color

**XYZ(62.8653, 63.0116,
58.7183)**

Conversions

Conversions Part 1

Format	Color
Hex	E4CBC0
RGB	228, 203, 192
RGB Percent	89%, 80%, 75%
CMY	0.1059, 0.2039, 0.2471
CMYK	0.00, 0.11, 0.16, 0.11
HSL	18°, 40%, 82%
HSV	18°, 16%, 89%
XYZ	62.8653, 63.0116, 58.7183
YIQ	209.2210, 18.4310, 1.8790

Conversions

Conversions Part 2

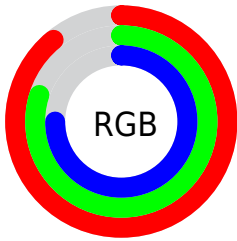
Format	Color
R _Y B	228, 208, 192
Decimal	14994368
CIE Lab	83.45, 6.98, 8.67
CIE LCh	83, 11.132, 51.154
Yxy	63.0116, 0.3406, 0.3414
Android (android.graphics.Color)	4293184448 (0xFFE4CBC0)
YUV	209.2210, -8.4900, 16.4692
Hunter-Lab	79.3798, 2.4493, 11.7083

Details

The XYZ color **62.8653, 63.0116, 58.7183** is a light color, and the websafe version is hex **CCCCCC**. A complement of this color would be **60.5544, 66.4323, 83.0306**, and the grayscale version is **60.7953, 63.9614, 69.6539**.

A 20% lighter version of the original color is **93.9433, 99.5573, 103.0721**, and **32.4209, 32.1296, 28.9190** is the 20% darker color. If you saturate the color by 10%, you get **56.9830, 54.9811, 45.2444**, and if you desaturate by 10%, it is **69.5243, 71.9679, 74.3833**.

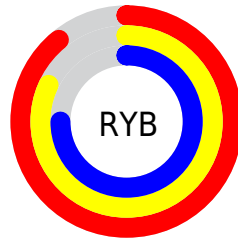
Distribution



Red (89%)

Green (80%)

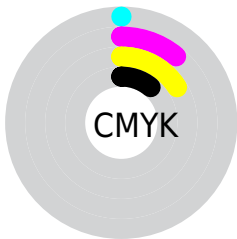
Blue (75%)



Red (89%)

Yellow (82%)

Blue (75%)

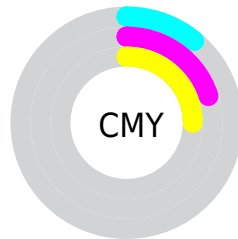


Cyan (0%)

Magenta (11%)

Yellow (16%)

Black (11%)



Cyan (11%)

Magenta (20%)


Yellow (25%)

Brightness & Saturation Gradients

These gradients show how the XYZ color 62.8653, 63.0116, 58.7183 changes by changing the brightness by 10 percent. The first figure shows a shift by +10% for each color and the second figure -10%.


Similar to the brightness gradients but the following saturation gradients show a change of the XYZ color 62.8653, 63.0116, 58.7183 by changing the saturation by 10% instead.


 62.8653, 63.0116,
58.7183

 62.8653, 63.0116,
58.7183


424.7479,
435.6116, 437.5300

 45.9905, 45.8506,
41.9679


 108.0581,
109.1862, 104.4932

 32.4429, 32.1279,
28.7508


137.1067,
138.9687, 134.3548

 21.8572, 21.4592,
18.6484

170.9440,
173.7270, 169.4238

 13.8680, 13.4601,
11.2423

209.9354,
213.8457, 210.1189

 8.1100, 7.7461,
6.1138

254.4461,
259.7091, 256.8585

 4.2178, 3.9329,
2.8445

304.8415,

 1.8261, 1.6361,

311.7016, 310.0612

1.0158

361.4870,
370.2077, 370.1455

■ 0.5333, 0.3818,
0.0000

■ 0.0000, 0.0000,
0.0000

■ 62.8653, 63.0116,
58.7183

■ 62.8653, 63.0116,
58.7183

■ 56.9830, 54.9811,
45.2444

■ 69.5243, 71.9679,
74.3833

■ 51.8427, 47.8379,
33.8593

■ 76.9824, 81.8700,
92.3276

■ 47.4150, 41.5531,
24.4584

■ 84.3857, 92.3952,
107.9942

■ 43.6661, 36.0933,
16.9261

■ 85.8052, 95.2341,
108.4674

■ 40.5594, 31.4223,
11.1353

■ 38.0543, 27.5014,
6.9424

■ 36.1050, 24.2878,
4.1803

■ 34.6570, 21.7337,
2.6441

■ 34.1662, 20.8361,
2.2210

Harmonies

Analogous

The Analogous color harmony consists of three colors that are next to each other on the color wheel.



64.3486, 63.0116, 63.8984



62.8653, 63.0116, 58.7183



60.6110, 63.0116, 56.2333

Triad

The Triadic color harmony groups three colors that are evenly spaced from another and form a triangle on the color wheel.



62.8653, 63.0116, 58.7183



55.3973, 63.0116, 66.5744



61.5904, 63.0116, 81.8418

Complementary

The Complementary color scheme is a pair of colors which are on the opposite of each other on the color wheel.



62.8653, 63.0116, 58.7183



60.5544, 66.4323, 83.0306

Split Complementary

Split-complementary colors differ from the complementary color scheme. The scheme consists of three colors, the original color and two neighbors of the complement color.



59.1760, 63.0116, 82.6788



62.8653, 63.0116, 58.7183



55.6435, 63.0116, 73.5455

Square

The Square scheme is like the rectangle color scheme, but the four colors are evenly spaced on the color wheel.



62.8653, 63.0116, 58.7183



56.3295, 63.0116, 60.5637



57.0113, 63.0116, 79.5522



63.5988, 63.0116, 77.3368

Rectangle

The Rectangle color scheme consists of four colors that form a rectangle on the color wheel.



62.8653, 63.0116, 58.7183



58.9925, 63.0116, 56.3153



57.0113, 63.0116, 79.5522



60.7979, 63.0116, 82.5729

Sweetspot

The Sweet Spot groups the original color and five complimentary colors.



62.8670, 63.0144, 58.7196



90.3052, 93.6870, 97.5252



63.3957, 59.2143, 73.8711



19.1908, 19.8683, 20.5451



0.0000, 0.0000, 0.0000



20.3446, 21.4041, 23.3091

Same Dimension

The Same Dimension uses a secret algorithm to generate beautiful new colors.



62.8670, 63.0144, 58.7196



78.3991, 77.6461, 69.5986



67.3137, 71.9079, 60.2019



14.7345, 15.0828, 15.0391



19.8205, 12.2152, 1.3131



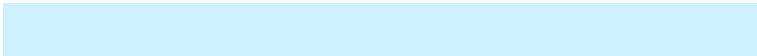
1.5445, 1.0623, 0.1236

Inverse Universe

The Inverse Universe completely reimagines the original color for something new.



60.5544, 66.4323, 83.0306



74.8727, 82.8530, 106.6538



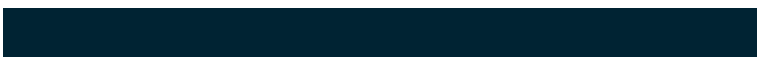
56.2121, 57.7478, 81.5832



14.4162, 15.5538, 18.3867



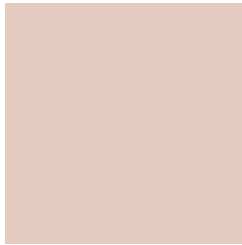
15.2861, 17.6343, 44.9813



1.2107, 1.4654, 3.3510

Previews

White Background



This preview shows how the XYZ color 62.8653, 63.0116, 58.7183 looks on a white background.

Color Contrast Check

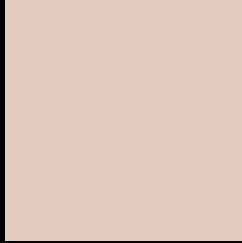
Large Text (above 18pt) WCAG AA × Fail

Any Text WCAG AA × Fail

Large Text (above 18pt) WCAG AAA × Fail

Any Text WCAG AAA × Fail

Black Background



This preview shows how the XYZ color 62.8653, 63.0116, 58.7183 looks on a black background.

Color Contrast Check

Large Text (above 18pt) WCAG AA ✓ Pass

Any Text WCAG AA ✓ Pass

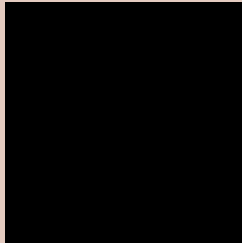
Large Text (above 18pt) WCAG AAA ✓ Pass

Any Text WCAG AAA ✓ Pass

If you want to check with other color combinations, try the [Color Contrast Checker](#).

XYZ 62.8653, 63.0116, 58.7183

Background



This preview shows how black text looks on a background with the XYZ color 62.8653, 63.0116, 58.7183.



This preview shows how white text looks on a background with the XYZ color 62.8653, 63.0116,

Color Blindness Simulation

Color vision deficiency is a very complex topic, and I could not describe the different causes any better than Wikipedia does, so if you want to learn more, you should check out their [article about color blindness](#).

Dichromacy



Original Color

62.8653, 63.0116, 58.7183

Protanopia

60.0748, 62.9678, 60.0267

Deuteranopia

64.3328, 63.0715, 58.6525



Tritanopia

65.8750, 63.2038, 73.0175

Trichromacy



Original Color

62.8653, 63.0116, 58.7183

Protanomaly

61.2121, 63.2085, 59.4263

Deuteranomaly

63.9137, 63.2026, 58.6999

Tritanomaly

64.7823, 63.1013, 67.7969

Monochromacy



Original Color

62.8653, 63.0116, 58.7183

Achromatopsia

60.6036, 63.7597, 69.4343

Achromatomaly

61.4112, 63.5364, 65.5269

CSS Examples

Text

The CSS property to change the color of the text to XYZ 62.8653, 63.0116, 58.7183 is called "color". The color property can be set on classes, ids or directly on the HTML element.

This example shows how text in the color `rgb(228, 203, 192)` looks like.

```
.text, #text, p{  
    color:rgb(228, 203, 192)  
}
```

If you want to add a text shadow in that color use the text-shadow property, you can generate a text shadow directly with our [CSS Text Shadow Generator](#).

Here you see how black text with a 4 pixel rgb(228, 203, 192) colored shadow looks like.

```
.shadow{ text-shadow: 4px 4px 2px rgb(228, 203, 192) }
```

Border

The CSS property to change the border of an element to XYZ 62.8653, 63.0116, 58.7183 is called "border". The border property can be set on classes, ids or directly on the HTML element.

This example shows the color as border, it can be applied via the CSS property "border" or "border-color".

```
.border, #border, table{ border:4px solid rgb(228, 203, 192) }
```


If only the border color should be changed use the property border-color.

```
.border{ border-color:rgb(228, 203, 192) }
```

If you want to add a box shadow in that color use:

Here you see how a box with a 4 pixel rgb(228, 203, 192) colored shadow looks like.

```
.boxshadow{ -moz-box-shadow:4px 4px 4px  
4px rgb(228, 203, 192); -webkit-box-  
shadow:4px 4px 4px 4px rgb(228, 203, 192);  
box-shadow:4px 4px 4px 4px rgb(228, 203,  
192) }
```

Background

The CSS property to change the background color of an element to XYZ 62.8653, 63.0116, 58.7183 is called "background". The background property can be set on classes, ids or directly on the HTML element.

```
.background, #background, body{  
background: rgb(228, 203, 192) }
```

If only the background color should be changed can be used:

```
.background{ background-color: rgb(228,  
203, 192) }
```

This example shows the color as background, it is applied via the CSS property "background".

To optimize and compress your CSS code, you can use our [online CSS compressor and optimizer](#) based on csstidy. If you want to create a linear or radial gradient as background or border, check our [CSS Gradient Generator](#).

Hey! You found this booklet interesting? Support Converting Colors with the new Membership Option!

The pro membership hides all ads, plus gives you double the colors in the color bucket, and more awesome pro features!

[Learn more, Memberships starting at \\$2.50/m!](#)

**Follow me
on Twitter!**

@ConvertingColor