

Converting Colors

XYZ(62.8660, 61.3039, 66.3332)

Have a look what the booklet for
XYZ(62.8660, 61.3039, 66.3332)
contains.

XYZ(62.8069, 61.4234, 66.3032)	3
<i>Conversions</i>	4
<i>Details</i>	6
<i>Harmonies</i>	12
<i>Previews</i>	24
<i>Color Blindness Simulation</i>	28
<i>CSS Examples</i>	31

Color

**XYZ(62.8069, 61.4234,
66.3032)**

Conversions

Conversions Part 1

Format	Color
Hex	E2C7CD
RGB	226, 199, 205
RGB Percent	89%, 78%, 80%
CMY	0.1137, 0.2196, 0.1961
CMYK	0.00, 0.12, 0.09, 0.11
HSL	347°, 32%, 83%
HSV	347°, 12%, 89%
XYZ	62.8069, 61.4234, 66.3032
YIQ	207.7570, 14.1660, 7.5900

Conversions

Conversions Part 2

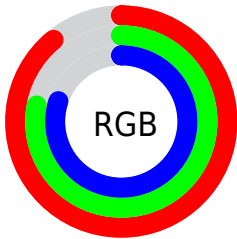
Format	Color
R _Y B	226, 199, 205
Decimal	14862285
CIE Lab	82.61, 10.48, 0.49
CIE LCh	83, 10.491, 2.676
Yxy	61.4234, 0.3296, 0.3224
Android (android.graphics.Color)	4293052365 (0xFFE2C7CD)
YUV	207.7570, -1.3592, 15.9991
Hunter-Lab	78.3731, 5.8941, 4.7021

Details

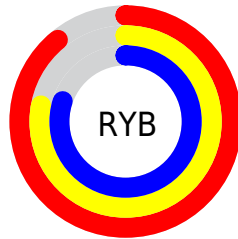
The XYZ color **62.8069, 61.4234, 66.3032** is a light color, and the websafe version is hex **CCCCCC**. A complement of this color would be **63.6702, 71.7037, 78.1981**, and the grayscale version is **59.8004, 62.9147, 68.5141**.

A 20% lighter version of the original color is **95.0500, 100.0000, 108.9000**, and **32.5059, 31.1431, 33.5761** is the 20% darker color. If you saturate the color by 10%, you get **55.9841, 50.9847, 54.1406**, and if you desaturate by 10%, it is **70.6439, 73.5074, 79.9818**.

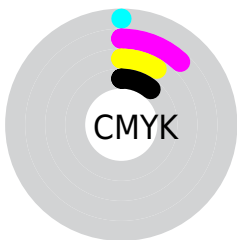
Distribution



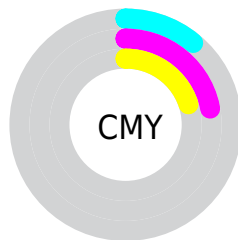
- Red (89%)
- Green (78%)
- Blue (80%)



- Red (89%)
- Yellow (78%)
- Blue (80%)



- Cyan (0%)
- Magenta (12%)
- Yellow (9%)
- Black (11%)



- Cyan (11%)
- Magenta (22%)
- Yellow (20%)

Brightness & Saturation Gradients

These gradients show how the XYZ color 62.8069, 61.4234, 66.3032 changes by changing the brightness by 10 percent. The first figure shows a shift by +10% for each color and the second figure -10%.

Similar to the brightness gradients but the following saturation gradients show a change of the XYZ color 62.8069, 61.4234, 66.3032 by changing the saturation by 10% instead.

62.8069, 61.4234,
66.3032

62.8069, 61.4234,
66.3032

424.5392,
429.8247, 465.8942

45.9431, 44.5670,
48.0605

107.9743,
106.8917, 115.5525

32.4053, 31.1165,
33.5145

137.0085,
136.2724, 147.3963

21.8283, 20.6876,
22.2465

170.8302,
170.5967, 184.6109

13.8467, 12.8958,
13.8381

209.8049,
210.2488, 227.6147

8.0951, 7.3568,
7.8707

254.2977,
255.6133, 276.8265

4.2082, 3.6863,
3.9257

304.6741,

1.8206, 1.4996,

307.0745, 332.6646

1.5847

361.2995,
365.0169, 395.5477

■ 0.5300, 0.2885,
0.2799

■ 0.0000, 0.0000,
0.0000

■ 62.8069, 61.4234,
66.3032

■ 62.8069, 61.4234,
66.3032

■ 55.9841, 50.9847,
54.1406

■ 70.6439, 73.5074,
79.9818

■ 50.1284, 42.1121,
43.4375

■ 79.5292, 87.2950,
95.2225

■ 45.1970, 34.7322,
34.1393

■ 85.1743, 94.9089,
108.4378

■ 41.1416, 28.7624,
26.1868

■ 37.9092, 24.1120,
19.5162

■ 35.4414, 20.6797,
14.0584

■ 33.6712, 18.3496,
9.7374

■ 32.5196, 16.9824,
6.4680

■ 31.9443, 16.4009,
4.5219

Harmonies

Analogous

The Analogous color harmony consists of three colors that are next to each other on the color wheel.



62.3068, 61.4234, 72.7253



62.8069, 61.4234, 66.3032



62.0962, 61.4234, 60.4154

Triad

The Triadic color harmony groups three colors that are evenly spaced from another and form a triangle on the color wheel.



62.8069, 61.4234, 66.3032



56.0780, 61.4234, 56.9899



56.4191, 61.4234, 78.4935

Complementary

The Complementary color scheme is a pair of colors which are on the opposite of each other on the color wheel.



62.8069, 61.4234, 66.3032



63.6702, 71.7037, 78.1981

Split Complementary

Split-complementary colors differ from the complementary color scheme. The scheme consists of three colors, the original color and two neighbors of the complement color.



54.8172, 61.4234, 73.7893



62.8069, 61.4234, 66.3032



54.6239, 61.4234, 61.3559

Square

The Square scheme is like the rectangle color scheme, but the four colors are evenly spaced on the color wheel.



62.8069, 61.4234, 66.3032



58.1795, 61.4234, 55.2586



54.1683, 61.4234, 67.4594



58.5832, 61.4234, 80.0254

Rectangle

The Rectangle color scheme consists of four colors that form a rectangle on the color wheel.



62.8069, 61.4234, 66.3032



61.0417, 61.4234, 57.5091



54.1683, 61.4234, 67.4594



55.7989, 61.4234, 77.2165

Sweetspot

The Sweet Spot groups the original color and five complimentary colors.



62.8086, 61.4261, 66.3045



90.6305, 93.1633, 101.2543



63.5774, 61.5096, 80.4739



19.2261, 19.6743, 21.3728



0.0000, 0.0000, 0.0000



20.3446, 21.4041, 23.3091

Same Dimension

The Same Dimension uses a secret algorithm to generate beautiful new colors.



62.8086, 61.4261, 66.3045



80.5467, 77.6384, 83.5795



63.7943, 64.5337, 63.1301



13.8313, 13.7501, 14.8816



18.2607, 9.3713, 2.7728



1.2993, 0.6630, 0.3689

Inverse Universe

The Inverse Universe completely reimagines the original color for something new.



62.8086, 61.4261, 66.3045



80.5467, 77.6384, 83.5795



62.5622, 68.1938, 81.8176



13.8313, 13.7501, 14.8816



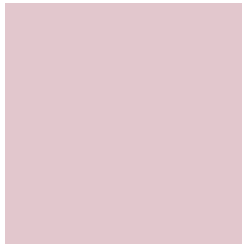
18.2607, 9.3713, 2.7728



1.2993, 0.6630, 0.3689

Previews

White Background



This preview shows how the XYZ color 62.8069, 61.4234, 66.3032 looks on a white background.

Color Contrast Check

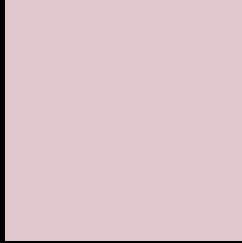
Large Text (above 18pt) WCAG AA × Fail

Any Text WCAG AA × Fail

Large Text (above 18pt) WCAG AAA × Fail

Any Text WCAG AAA × Fail

Black Background



This preview shows how the XYZ color 62.8069, 61.4234, 66.3032 looks on a black background.

Color Contrast Check

Large Text (above 18pt) WCAG AA ✓ Pass

Any Text WCAG AA ✓ Pass

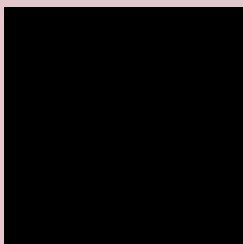
Large Text (above 18pt) WCAG AAA ✓ Pass

Any Text WCAG AAA ✓ Pass

If you want to check with other color combinations, try the [Color Contrast Checker](#).

XYZ 62.8069, 61.4234, 66.3032

Background



This preview shows how black text looks on a background with the XYZ color 62.8069, 61.4234, 66.3032.



This preview shows how white text looks on a background with the XYZ color 62.8069, 61.4234,

Color Blindness Simulation

Color vision deficiency is a very complex topic, and I could not describe the different causes any better than Wikipedia does, so if you want to learn more, you should check out their [article about color blindness](#).

Dichromacy



Original Color

62.8069, 61.4234, 66.3032

Protanopia

59.5110, 61.7720, 68.4611

Deuteranopia

62.8069, 61.4234, 66.3032



Tritanopia

63.8829, 61.5232, 71.4590

Trichromacy



Original Color

62.8069, 61.4234, 66.3032

Protanomaly

60.6428, 61.6639, 67.7376

Deuteranomaly

62.8069, 61.4234, 66.3032

Tritanomaly

63.5055, 61.3722, 69.4717

Monochromacy



Original Color

62.8069, 61.4234, 66.3032

Achromatopsia

59.9535, 63.0757, 68.6895

Achromatomaly

61.1181, 62.6147, 67.8961

CSS Examples

Text

The CSS property to change the color of the text to XYZ 62.8069, 61.4234, 66.3032 is called "color". The color property can be set on classes, ids or directly on the HTML element.

This example shows how text in the color `rgb(226, 199, 205)` looks like.

```
.text, #text, p{  
    color:rgb(226, 199, 205)  
}
```

If you want to add a text shadow in that color use the text-shadow property, you can generate a text shadow directly with our [CSS Text Shadow Generator](#).

Here you see how black text with a 4 pixel rgb(226, 199, 205) colored shadow looks like.

```
.shadow{ text-shadow: 4px 4px 2px rgb(226, 199, 205) }
```

Border

The CSS property to change the border of an element to XYZ 62.8069, 61.4234, 66.3032 is called "border". The border property can be set on classes, ids or directly on the HTML element.

This example shows the color as border, it can be applied via the CSS property "border" or "border-color".

```
.border, #border, table{ border:4px solid rgb(226, 199, 205) }
```


If only the border color should be changed use the property `border-color`.

```
.border{ border-color:rgb(226, 199, 205) }
```

If you want to add a box shadow in that color use:

Here you see how a box with a 4 pixel `rgb(226, 199, 205)` colored shadow looks like.

```
.boxshadow{ -moz-box-shadow:4px 4px 4px  
4px rgb(226, 199, 205); -webkit-box-  
shadow:4px 4px 4px 4px rgb(226, 199, 205);  
box-shadow:4px 4px 4px 4px rgb(226, 199,  
205) }
```

Background

The CSS property to change the background color of an element to XYZ 62.8069, 61.4234, 66.3032 is called "background". The background property can be set on classes, ids or directly on the HTML element.

```
.background, #background, body{  
background: rgb(226, 199, 205) }
```

If only the background color should be changed can be used:

```
.background{ background-color: rgb(226,  
199, 205) }
```

This example shows the color as background, it is applied via the CSS property "background".

To optimize and compress your CSS code, you can use our [online CSS compressor and optimizer](#) based on csstidy. If you want to create a linear or radial gradient as background or border, check our [CSS Gradient Generator](#).

Hey! You found this booklet interesting? Support Converting Colors with the new Membership Option!

The pro membership hides all ads, plus gives you double the colors in the color bucket, and more awesome pro features!

[Learn more, Memberships starting at \\$2.50/m!](#)

**Follow me
on Twitter!**

@ConvertingColor