

Converting Colors

XYZ(62.8848, 62.9829, 60.4723)

Have a look what the booklet for
XYZ(62.8848, 62.9829, 60.4723)
contains.

XYZ(62.8848, 62.9829, 60.4723)	3
<i>Conversions</i>	4
<i>Details</i>	6
<i>Harmonies</i>	12
<i>Previews</i>	24
<i>Color Blindness Simulation</i>	28
<i>CSS Examples</i>	31

Color

**XYZ(62.8848, 62.9829,
60.4723)**

Conversions

Conversions Part 1

Format	Color
Hex	E3CBC3
RGB	227, 203, 195
RGB Percent	89%, 80%, 76%
CMY	0.1098, 0.2039, 0.2353
CMYK	0.00, 0.11, 0.14, 0.11
HSL	15°, 36%, 83%
HSV	15°, 14%, 89%
XYZ	62.8848, 62.9829, 60.4723
YIQ	209.2640, 16.8720, 2.6000

Conversions

Conversions Part 2

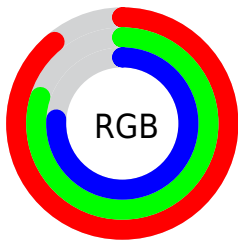
Format	Color
RYB	227, 206, 195
Decimal	14928835
CIELab	83.43, 7.09, 7.04
CIELCh	83, 9.993, 44.784
Yxy	62.9829, 0.3375, 0.3380
Android (android.graphics.Color)	4293118915 (0xFFE3CBC3)
YUV	209.2640, -7.0322, 15.5545
Hunter-Lab	79.3618, 2.5570, 10.3753

Details

The XYZ color **62.8848, 62.9829, 60.4723** is a light color, and the websafe version is hex **CCCCCC**. A complement of this color would be **61.7020, 67.8097, 82.5101**, and the grayscale version is **60.8149, 63.9820, 69.6764**.

A 20% lighter version of the original color is **94.5707, 99.8083, 106.3760**, and **32.3498, 32.0759, 29.6856** is the 20% darker color. If you saturate the color by 10%, you get **56.7096, 54.4320, 46.6992**, and if you desaturate by 10%, it is **69.8951, 72.5782, 76.4502**.

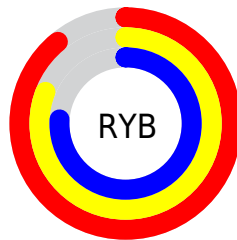
Distribution



Red (89%)

Green (80%)

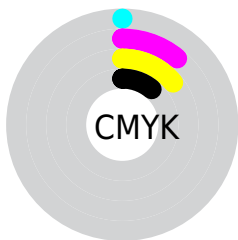
Blue (76%)



Red (89%)

Yellow (81%)

Blue (76%)

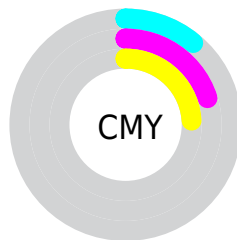


Cyan (0%)

Magenta (11%)

Yellow (14%)

Black (11%)



Cyan (11%)

Magenta (20%)

Yellow (24%)

Brightness & Saturation Gradients

These gradients show how the XYZ color 62.8848, 62.9829, 60.4723 changes by changing the brightness by 10 percent. The first figure shows a shift by +10% for each color and the second figure -10%.

Similar to the brightness gradients but the following saturation gradients show a change of the XYZ color 62.8848, 62.9829, 60.4723 by changing the saturation by 10% instead.

62.8848, 62.9829,
60.4723

62.8848, 62.9829,
60.4723

424.8176,
435.5074, 444.1894

46.0063, 45.8274,
43.3716

108.0860,
109.1448, 107.0646

32.4555, 32.1096,
29.8433

137.1395,
138.9200, 137.3933

21.8668, 21.4452,
19.4686

170.9820,
173.6706, 172.9684

13.8751, 13.4498,
11.8291

209.9789,
213.7809, 214.2085

8.1150, 7.7390,
6.5063

254.4956,
259.6353, 261.5321

4.2210, 3.9284,
3.0816

304.8973,

1.8279, 1.6336,

311.6183, 315.3577

1.1365

361.5496,
370.1142, 376.1040

■ 0.5344, 0.3801,
0.0000

■ 0.0000, 0.0000,
0.0000

■ 62.8848, 62.9829,
60.4723

■ 62.8848, 62.9829,
60.4723

■ 56.7096, 54.4320,
46.6992

■ 69.8951, 72.5782,
76.4502

■ 51.3325, 46.8818,
35.0297

■ 77.7653, 83.2433,
94.7202

■ 46.7215, 40.2975,
25.3607

■ 85.1934, 94.4802,
108.3541

■ 42.8402, 34.6395,
17.5785

■ 85.4888, 95.0710,
108.4525

■ 39.6490, 29.8649,
11.5582

■ 37.1044, 25.9275,
7.1596

■ 35.1576, 22.7766,
4.2205

■ 33.7511, 20.3551,
2.5445

■ 33.1311, 19.2356,
1.9666

Harmonies

Analogous

The Analogous color harmony consists of three colors that are next to each other on the color wheel.



64.0039, 62.9829, 65.5630



62.8848, 62.9829, 60.4723



60.9691, 62.9829, 57.6448

Triad

The Triadic color harmony groups three colors that are evenly spaced from another and form a triangle on the color wheel.



62.8848, 62.9829, 60.4723



55.9131, 62.9829, 65.4781



60.9382, 62.9829, 80.8384

Complementary

The Complementary color scheme is a pair of colors which are on the opposite of each other on the color wheel.



62.8848, 62.9829, 60.4723



61.7020, 67.8097, 82.5101

Split Complementary

Split-complementary colors differ from the complementary color scheme. The scheme consists of three colors, the original color and two neighbors of the complement color.



58.7711, 62.9829, 80.8122



62.8848, 62.9829, 60.4723



55.9053, 62.9829, 71.6834

Square

The Square scheme is like the rectangle color scheme, but the four colors are evenly spaced on the color wheel.



62.8848, 62.9829, 60.4723



56.9619, 62.9829, 60.4134



56.9403, 62.9829, 77.3768



62.8617, 62.9829, 77.4462

Rectangle

The Rectangle color scheme consists of four colors that form a rectangle on the color wheel.



62.8848, 62.9829, 60.4723



59.5149, 62.9829, 57.3082



56.9403, 62.9829, 77.3768



60.2132, 62.9829, 81.2354

Sweetspot

The Sweet Spot groups the original color and five complimentary colors.



62.8865, 62.9857, 60.4736



91.0592, 94.5770, 99.6821



63.9805, 60.4764, 75.3195



19.3341, 20.0305, 20.9766



0.0000, 0.0000, 0.0000



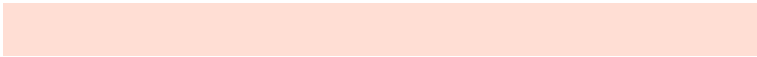
20.3446, 21.4041, 23.3091

Same Dimension

The Same Dimension uses a secret algorithm to generate beautiful new colors.



62.8865, 62.9857, 60.4736



79.3320, 78.5008, 73.0270



66.8610, 70.9347, 61.7985



14.6684, 14.9508, 15.0171



19.4001, 11.3743, 1.1730



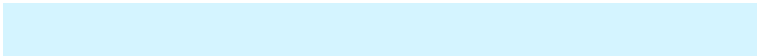
1.5061, 0.9855, 0.1108

Inverse Universe

The Inverse Universe completely reimagines the original color for something new.



61.7020, 67.8097, 82.5101



77.4985, 85.9608, 107.1152



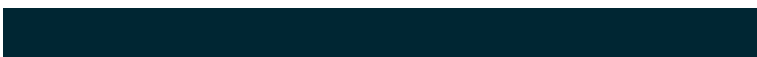
57.7275, 59.8609, 81.1853



14.4862, 15.6937, 18.4100



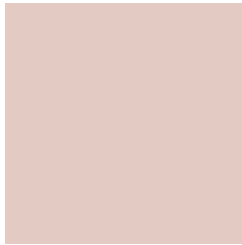
16.5908, 20.2436, 45.4162



1.2985, 1.6409, 3.3802

Previews

White Background



This preview shows how the XYZ color 62.8848, 62.9829, 60.4723 looks on a white background.

Color Contrast Check

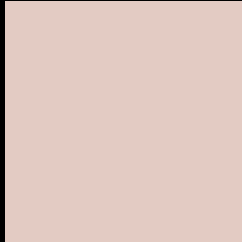
Large Text (above 18pt) WCAG AA × Fail

Any Text WCAG AA × Fail

Large Text (above 18pt) WCAG AAA × Fail

Any Text WCAG AAA × Fail

Black Background



This preview shows how the XYZ color 62.8848, 62.9829, 60.4723 looks on a black background.

Color Contrast Check

Large Text (above 18pt) WCAG AA ✓ Pass

Any Text WCAG AA ✓ Pass

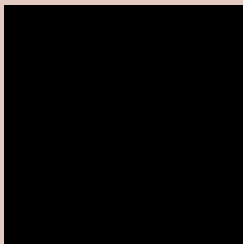
Large Text (above 18pt) WCAG AAA ✓ Pass

Any Text WCAG AAA ✓ Pass

If you want to check with other color combinations, try the [Color Contrast Checker](#).

XYZ 62.8848, 62.9829, 60.4723

Background



This preview shows how black text looks on a background with the XYZ color 62.8848, 62.9829, 60.4723.



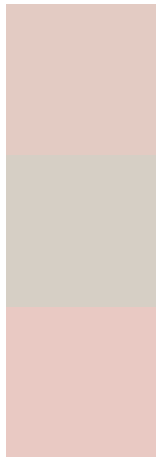
This preview shows how white text looks on a background with the XYZ color 62.8848, 62.9829,

60.4723.

Color Blindness Simulation

Color vision deficiency is a very complex topic, and I could not describe the different causes any better than Wikipedia does, so if you want to learn more, you should check out their [article about color blindness](#).

Dichromacy



Original Color

62.8848, 62.9829, 60.4723

Protanopia

60.1224, 62.9530, 61.8057

Deuteranopia

64.3412, 63.0371, 60.4060



Tritanopia

65.6821, 63.0894, 73.6814

Trichromacy



Original Color

62.8848, 62.9829, 60.4723

Protanomaly

61.2485, 63.1882, 61.1930

Deuteranomaly

63.9259, 63.1701, 60.4536

Tritanomaly

64.5849, 62.9854, 68.4279

Monochromacy



Original Color

62.8848, 62.9829, 60.4723

Achromatopsia

60.6036, 63.7597, 69.4343

Achromatomaly

61.5308, 63.5842, 66.1567

CSS Examples

Text

The CSS property to change the color of the text to XYZ 62.8848, 62.9829, 60.4723 is called "color". The color property can be set on classes, ids or directly on the HTML element.

This example shows how text in the color `rgb(227, 203, 195)` looks like.

```
.text, #text, p{  
    color:rgb(227, 203, 195)  
}
```

If you want to add a text shadow in that color use the text-shadow property, you can generate a text shadow directly with our [CSS Text Shadow Generator](#).

Here you see how black text with a 4 pixel rgb(227, 203, 195) colored shadow looks like.

```
.shadow{ text-shadow: 4px 4px 2px rgb(227, 203, 195) }
```

Border

The CSS property to change the border of an element to XYZ 62.8848, 62.9829, 60.4723 is called "border". The border property can be set on classes, ids or directly on the HTML element.

This example shows the color as border, it can be applied via the CSS property "border" or "border-color".

```
.border, #border, table{ border:4px solid rgb(227, 203, 195) }
```


If only the border color should be changed use the property border-color.

```
.border{ border-color:rgb(227, 203, 195) }
```

If you want to add a box shadow in that color use:

Here you see how a box with a 4 pixel rgb(227, 203, 195) colored shadow looks like.

```
.boxshadow{ -moz-box-shadow:4px 4px 4px  
4px rgb(227, 203, 195); -webkit-box-  
shadow:4px 4px 4px 4px rgb(227, 203, 195);  
box-shadow:4px 4px 4px 4px rgb(227, 203,  
195) }
```

Background

The CSS property to change the background color of an element to XYZ 62.8848, 62.9829, 60.4723 is called "background". The background property can be set on classes, ids or directly on the HTML element.

```
.background, #background, body{  
background: rgb(227, 203, 195) }
```

If only the background color should be changed can be used:

```
.background{ background-color: rgb(227,  
203, 195) }
```

This example shows the color as background, it is applied via the CSS property "background".

To optimize and compress your CSS code, you can use our [online CSS compressor and optimizer](#) based on csstidy. If you want to create a linear or radial gradient as background or border, check our [CSS Gradient Generator](#).

Hey! You found this booklet interesting? Support Converting Colors with the new Membership Option!

The pro membership hides all ads, plus gives you double the colors in the color bucket, and more awesome pro features!

[Learn more, Memberships starting at \\$2.50/m!](#)

**Follow me
on Twitter!**

@ConvertingColor