

Converting Colors

XYZ(63.0232, 62.2082, 68.1451)

Have a look what the booklet for
XYZ(63.0232, 62.2082, 68.1451)
contains.

XYZ(63.0123, 62.1746, 68.3543)	3
<i>Conversions</i>	4
<i>Details</i>	6
<i>Harmonies</i>	12
<i>Previews</i>	24
<i>Color Blindness Simulation</i>	28
<i>CSS Examples</i>	31

Color

**XYZ(63.0123, 62.1746,
68.3543)**

Conversions

Conversions Part 1

Format	Color
Hex	E0C9D0
RGB	224, 201, 208
RGB Percent	88%, 79%, 82%
CMY	0.1216, 0.2117, 0.1843
CMYK	0.00, 0.10, 0.07, 0.12
HSL	342°, 27%, 83%
HSV	342°, 10%, 88%
XYZ	63.0123, 62.1746, 68.3543
YIQ	208.6750, 11.4610, 7.0530

Conversions

Conversions Part 2

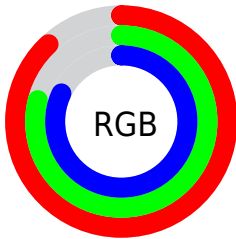
Format	Color
R_{YB}	224, 201, 208
Decimal	14731728
CIE _{Lab}	83.01, 9.23, -0.55
CIE _{LCh}	83, 9.245, 356.588
Yxy	62.1746, 0.3256, 0.3212
Android (android.graphics.Color)	4292921808 (0xFFE0C9D0)
YUV	208.6750, -0.3328, 13.4400
Hunter-Lab	78.8509, 4.6561, 3.7983

Details

The XYZ color **63.0123, 62.1746, 68.3543** is a light color, and the websafe version is hex **CCCCCC**. A complement of this color would be **63.2698, 70.7403, 75.9687**, and the grayscale version is **60.3909, 63.5360, 69.1907**.

A 20% lighter version of the original color is **95.0500, 100.0000, 108.9000**, and **32.6286, 31.6355, 34.9584** is the 20% darker color. If you saturate the color by 10%, you get **56.3425, 51.7538, 57.1312**, and if you desaturate by 10%, it is **70.6355, 74.1991, 80.8264**.

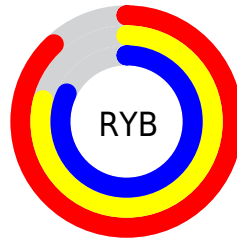
Distribution



Red (88%)

Green (79%)

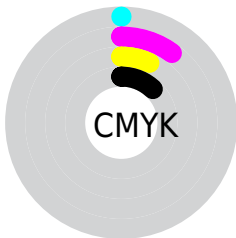
Blue (82%)



Red (88%)

Yellow (79%)

Blue (82%)

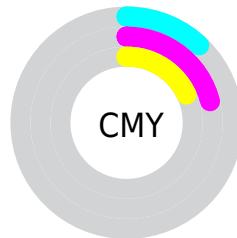


Cyan (0%)

Magenta (10%)

Yellow (7%)

Black (12%)



Cyan (12%)

Magenta (21%)

Yellow (18%)

Brightness & Saturation Gradients

These gradients show how the XYZ color 63.0123, 62.1746, 68.3543 changes by changing the brightness by 10 percent. The first figure shows a shift by +10% for each color and the second figure -10%.

Similar to the brightness gradients but the following saturation gradients show a change of the XYZ color 63.0123, 62.1746, 68.3543 by changing the saturation by 10% instead.

63.0123, 62.1746,
68.3543

63.0123, 62.1746,
68.3543

425.2731,
432.5677, 473.3824

46.1098, 45.1738,
49.7175

108.2690,
107.9778, 118.5179

32.5375, 31.5943,
34.8194

137.3539,
137.5491, 150.8817

21.9299, 21.0518,
23.2414

171.2303,
172.0792, 188.6584

13.9217, 13.1619,
14.5649

210.2637,
211.9527, 232.2664

8.1476, 7.5401,
8.3713

254.8193,
257.5539, 282.1242

4.2421, 3.8021,
4.2423

305.2625,

1.8400, 1.5635,

309.2672, 338.6505

1.7592

361.9586,
367.4770, 402.2637

■ 0.5416, 0.3328,
0.4008

■ 0.0000, 0.0000,
0.0000

■ 63.0123, 62.1746,
68.3543

■ 63.0123, 62.1746,
68.3543

■ 56.3425, 51.7538,
57.1312

■ 70.6355, 74.1991,
80.8264

■ 50.5827, 42.8608,
47.1136

■ 79.2429, 87.8829,
94.5811

■ 45.6937, 35.4257,
38.2614

■ 84.5118, 94.5719,
108.2028

■ 41.6315, 29.3697,
30.5306

■ 84.5509, 94.5875,
108.4086

■ 38.3479, 24.6067,
23.8740

■ 35.7898, 21.0410,
18.2412

■ 33.8968, 18.5632,
13.5770

■ 32.5978, 17.0433,
9.8201

■ 31.7888, 16.2667,
6.9570

Harmonies

Analogous

The Analogous color harmony consists of three colors that are next to each other on the color wheel.



62.3592, 62.1746, 73.9366



63.0123, 62.1746, 68.3543



62.5964, 62.1746, 62.8931

Triad

The Triadic color harmony groups three colors that are evenly spaced from another and form a triangle on the color wheel.



63.0123, 62.1746, 68.3543



57.3928, 62.1746, 58.3304



57.0054, 62.1746, 77.3001

Complementary

The Complementary color scheme is a pair of colors which are on the opposite of each other on the color wheel.



63.0123, 62.1746, 68.3543



63.2698, 70.7403, 75.9687

Split Complementary

Split-complementary colors differ from the complementary color scheme. The scheme consists of three colors, the original color and two neighbors of the complement color.



55.7268, 62.1746, 72.7407



63.0123, 62.1746, 68.3543



55.9469, 62.1746, 61.8198

Square

The Square scheme is like the rectangle color scheme, but the four colors are evenly spaced on the color wheel.



63.0123, 62.1746, 68.3543



59.3240, 62.1746, 57.3010



55.3437, 62.1746, 67.0451



58.8668, 62.1746, 79.2813

Rectangle

The Rectangle color scheme consists of four colors that form a rectangle on the color wheel.



63.0123, 62.1746, 68.3543



61.7739, 62.1746, 60.0178



55.3437, 62.1746, 67.0451



56.4948, 62.1746, 76.0060

Sweetspot

The Sweet Spot groups the original color and five complimentary colors.



63.0141, 62.1773, 68.3556



91.8127, 94.8777, 103.6517



62.8744, 61.8663, 79.1495



19.4708, 20.0220, 21.8912



0.0000, 0.0000, 0.0000



20.3446, 21.4041, 23.3091

Same Dimension

The Same Dimension uses a secret algorithm to generate beautiful new colors.



63.0141, 62.1773, 68.3556



82.8129, 80.7104, 88.8373



63.1684, 63.8333, 64.2532



13.8780, 13.7688, 15.1279



18.5481, 9.4862, 4.2859



1.3246, 0.6731, 0.5024

Inverse Universe

The Inverse Universe completely reimagines the original color for something new.



63.0141, 62.1773, 68.3556



82.8129, 80.7104, 88.8373



63.0804, 68.8739, 80.4912



13.8780, 13.7688, 15.1279



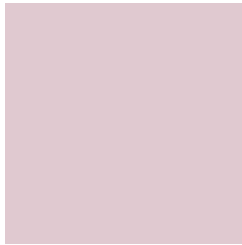
18.5481, 9.4862, 4.2859



1.3246, 0.6731, 0.5024

Previews

White Background



This preview shows how the XYZ color 63.0123, 62.1746, 68.3543 looks on a white background.

Color Contrast Check

Large Text (above 18pt) WCAG AA × Fail

Any Text WCAG AA × Fail

Large Text (above 18pt) WCAG AAA × Fail

Any Text WCAG AAA × Fail

Black Background



This preview shows how the XYZ color 63.0123, 62.1746, 68.3543 looks on a black background.

Color Contrast Check

Large Text (above 18pt) WCAG AA ✓ Pass

Any Text WCAG AA ✓ Pass

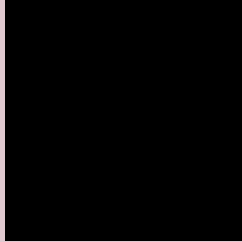
Large Text (above 18pt) WCAG AAA ✓ Pass

Any Text WCAG AAA ✓ Pass

If you want to check with other color combinations, try the [Color Contrast Checker](#).

XYZ 63.0123, 62.1746, 68.3543

Background



This preview shows how black text looks on a background with the XYZ color 63.0123, 62.1746, 68.3543.



This preview shows how white text looks on a background with the XYZ color 63.0123, 62.1746,

Color Blindness Simulation

Color vision deficiency is a very complex topic, and I could not describe the different causes any better than Wikipedia does, so if you want to learn more, you should check out their [article about color blindness](#).

Dichromacy



Original Color

63.0123, 62.1746, 68.3543

Protanopia

60.1237, 62.4011, 70.5038

Deuteranopia

63.4035, 62.0314, 68.3060



Tritanopia

63.9714, 62.2224, 72.9284

Trichromacy



Original Color

63.0123, 62.1746, 68.3543

Protanomaly

60.9573, 62.1350, 69.7532

Deuteranomaly

63.0908, 61.8702, 68.2914

Tritanomaly

63.5893, 62.0696, 70.9165

Monochromacy



Original Color

63.0123, 62.1746, 68.3543

Achromatopsia

60.6036, 63.7597, 69.4343

Achromatomaly

61.3115, 63.0422, 69.2585

CSS Examples

Text

The CSS property to change the color of the text to XYZ 63.0123, 62.1746, 68.3543 is called "color". The color property can be set on classes, ids or directly on the HTML element.

This example shows how text in the color rgb(224, 201, 208) looks like.

```
.text, #text, p{  
    color:rgb(224, 201, 208)  
}
```

If you want to add a text shadow in that color use the text-shadow property, you can generate a text shadow directly with our [CSS Text Shadow Generator](#).

Here you see how black text with a 4 pixel rgb(224, 201, 208) colored shadow looks like.

```
.shadow{ text-shadow: 4px 4px 2px rgb(224, 201, 208) }
```

Border

The CSS property to change the border of an element to XYZ 63.0123, 62.1746, 68.3543 is called "border". The border property can be set on classes, ids or directly on the HTML element.

This example shows the color as border, it can be applied via the CSS property "border" or "border-color".

```
.border, #border, table{ border:4px solid rgb(224, 201, 208) }
```


If only the border color should be changed use the property border-color.

```
.border{ border-color:rgb(224, 201, 208) }
```

If you want to add a box shadow in that color use:

Here you see how a box with a 4 pixel rgb(224, 201, 208) colored shadow looks like.

```
.boxshadow{ -moz-box-shadow:4px 4px 4px  
4px rgb(224, 201, 208); -webkit-box-  
shadow:4px 4px 4px 4px rgb(224, 201, 208);  
box-shadow:4px 4px 4px 4px rgb(224, 201,  
208) }
```

Background

The CSS property to change the background color of an element to XYZ 63.0123, 62.1746, 68.3543 is called "background". The background property can be set on classes, ids or directly on the HTML element.

```
.background, #background, body{  
background: rgb(224, 201, 208) }
```

If only the background color should be changed can be used:

```
.background{ background-color: rgb(224,  
201, 208) }
```

This example shows the color as background, it is applied via the CSS property "background".

To optimize and compress your CSS code, you can use our [online CSS compressor and optimizer](#) based on csstidy. If you want to create a linear or radial gradient as background or border, check our [CSS Gradient Generator](#).

Hey! You found this booklet interesting? Support Converting Colors with the new Membership Option!

The pro membership hides all ads, plus gives you double the colors in the color bucket, and more awesome pro features!

[Learn more, Memberships starting at \\$2.50/m!](#)

**Follow me
on Twitter!**

@ConvertingColor