

Converting Colors

XYZ(63.0436, 64.3078, 61.0646)

Have a look what the booklet for
XYZ(63.0436, 64.3078, 61.0646)
contains.

XYZ(63.3280, 64.6187, 61.3595)	3
<i>Conversions</i>	4
<i>Details</i>	6
<i>Harmonies</i>	12
<i>Previews</i>	24
<i>Color Blindness Simulation</i>	28
<i>CSS Examples</i>	31

Color

**XYZ(63.3280, 64.6187,
61.3595)**

Conversions

Conversions Part 1

Format	Color
Hex	E1CFC4
RGB	225, 207, 196
RGB Percent	88%, 81%, 77%
CMY	0.1176, 0.1882, 0.2314
CMYK	0.00, 0.08, 0.13, 0.12
HSL	23°, 33%, 83%
HSV	23°, 13%, 88%
XYZ	63.3280, 64.6187, 61.3595
YIQ	211.1280, 14.2590, 0.3950

Conversions

Conversions Part 2

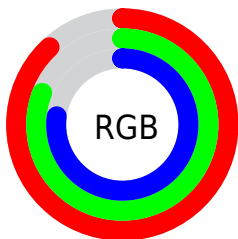
Format	Color
R _Y B	225, 214, 196
Decimal	14798788
CIE Lab	84.29, 4.43, 7.71
CIE LCh	84, 8.895, 60.094
Yxy	64.6187, 0.3345, 0.3413
Android (android.graphics.Color)	4292988868 (0xFFE1CFC4)
YUV	211.1280, -7.4581, 12.1657
Hunter-Lab	80.3858, -0.0526, 11.0132

Details

The XYZ color **63.3280, 64.6187, 61.3595** is a light color, and the websafe version is hex **CCCCCC**. A complement of this color would be **60.4020, 65.2640, 80.6486**, and the grayscale version is **62.0441, 65.2752, 71.0847**.

A 20% lighter version of the original color is **94.7296, 99.8718, 107.2129**, and **32.8513, 33.2815, 30.2837** is the 20% darker color. If you saturate the color by 10%, you get **57.7226, 57.2032, 47.7891**, and if you desaturate by 10%, it is **69.6203, 72.7919, 77.0553**.

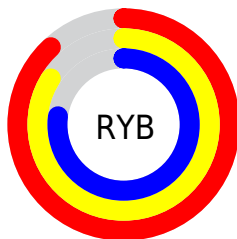
Distribution



Red (88%)

Green (81%)

Blue (77%)



Red (88%)

Yellow (84%)

Blue (77%)

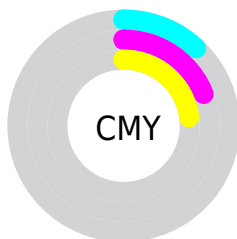


Cyan (0%)

Magenta (8%)

Yellow (13%)

Black (12%)



Cyan (12%)

Magenta (19%)

Yellow (23%)

Brightness & Saturation Gradients

These gradients show how the XYZ color 63.3280, 64.6187, 61.3595 changes by changing the brightness by 10 percent. The first figure shows a shift by +10% for each color and the second figure -10%.

Similar to the brightness gradients but the following saturation gradients show a change of the XYZ color 63.3280, 64.6187, 61.3595 by changing the saturation by 10% instead.

63.3280, 64.6187,
61.3595

63.3280, 64.6187,
61.3595

426.3997,
441.4205, 447.5339

46.3663, 47.1520,
44.0829

108.7217,
111.5015, 108.3619

32.7408, 33.1558,
30.3980

137.8844,
141.6863, 138.9248

22.0862, 22.2458,
19.8863

171.8448,
176.8793, 174.7535

14.0372, 14.0376,
12.1292

210.9683,
217.4649, 216.2667

8.2284, 8.1469,
6.7081

255.6201,
263.8274, 263.8827

4.2945, 4.1891,
3.2046

306.1657,

1.8701, 1.7799,

316.3512, 318.0203

1.2000

362.9705,
375.4208, 379.0978

■ 0.5593, 0.4746,
0.0000

■ 0.0000, 0.0000,
0.0000

■ 63.3280, 64.6187,
61.3595

■ 63.3280, 64.6187,
61.3595

■ 57.7226, 57.2032,
47.7891

■ 69.6203, 72.7919,
77.0553

■ 52.7739, 50.5146,
36.2475

■ 76.6175, 81.7355,
94.9589

■ 48.4574, 44.5323,
26.6371

■ 82.9442, 90.9128,
107.7840

■ 44.7449, 39.2316,
18.8501

■ 84.8617, 94.7477,
108.4232

■ 41.6055, 34.5862,
12.7684

■ 39.0056, 30.5678,
8.2594

■ 36.9069, 27.1455,
5.1708

■ 35.2650, 24.2847,
3.3190

■ 34.3299, 22.5641,
2.5459

Harmonies

Analogous

The Analogous color harmony consists of three colors that are next to each other on the color wheel.



64.7574, 64.6187, 65.0533



63.3280, 64.6187, 61.3595



61.4119, 64.6187, 60.0491

Triad

The Triadic color harmony groups three colors that are evenly spaced from another and form a triangle on the color wheel.



63.3280, 64.6187, 61.3595



57.7041, 64.6187, 70.3765



63.3390, 64.6187, 80.1782

Complementary

The Complementary color scheme is a pair of colors which are on the opposite of each other on the color wheel.



63.3280, 64.6187, 61.3595



60.4020, 65.2640, 80.6486

Split Complementary

Split-complementary colors differ from the complementary color scheme. The scheme consists of three colors, the original color and two neighbors of the complement color.



61.4243, 64.6187, 81.7857



63.3280, 64.6187, 61.3595



58.1957, 64.6187, 75.9452

Square

The Square scheme is like the rectangle color scheme, but the four colors are evenly spaced on the color wheel.



63.3280, 64.6187, 61.3595



58.1897, 64.6187, 65.0825



59.5471, 64.6187, 80.1976



64.7638, 64.6187, 75.9128

Rectangle

The Rectangle color scheme consists of four colors that form a rectangle on the color wheel.



63.3280, 64.6187, 61.3595



60.1247, 64.6187, 60.6458



59.5471, 64.6187, 80.1976



62.7300, 64.6187, 81.0572

Sweetspot

The Sweet Spot groups the original color and five complimentary colors.



63.3298, 64.6216, 61.3609



91.4648, 95.3881, 99.8172



62.9766, 60.3622, 72.1968



19.4366, 20.2353, 21.0108



0.0000, 0.0000, 0.0000



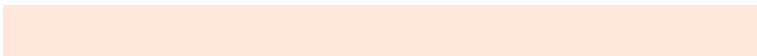
20.3446, 21.4041, 23.3091

Same Dimension

The Same Dimension uses a secret algorithm to generate beautiful new colors.



63.3298, 64.6216, 61.3609



82.3817, 83.5564, 77.2613



66.9076, 71.7772, 62.5535



14.1313, 14.5487, 14.3702



19.8863, 13.2106, 1.5018



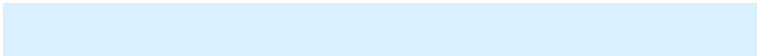
1.4628, 1.0846, 0.1322

Inverse Universe

The Inverse Universe completely reimagines the original color for something new.



60.4020, 65.2640, 80.6486



77.8944, 84.5402, 106.8202



56.9799, 58.4198, 79.5079



13.6569, 14.6529, 17.4962



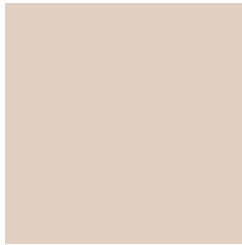
13.3200, 14.1096, 43.0698



1.0088, 1.1490, 3.0139

Previews

White Background



This preview shows how the XYZ color 63.3280, 64.6187, 61.3595 looks on a white background.

Color Contrast Check

Large Text (above 18pt) WCAG AA × Fail

Any Text WCAG AA × Fail

Large Text (above 18pt) WCAG AAA × Fail

Any Text WCAG AAA × Fail

Black Background



This preview shows how the XYZ color 63.3280, 64.6187, 61.3595 looks on a black background.

Color Contrast Check

Large Text (above 18pt) WCAG AA ✓ Pass

Any Text WCAG AA ✓ Pass

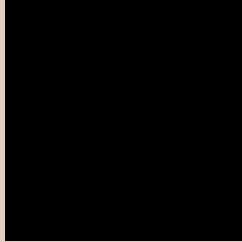
Large Text (above 18pt) WCAG AAA ✓ Pass

Any Text WCAG AAA ✓ Pass

If you want to check with other color combinations, try the [Color Contrast Checker](#).

XYZ 63.3280, 64.6187, 61.3595

Background



This preview shows how black text looks on a background with the XYZ color 63.3280, 64.6187, 61.3595.

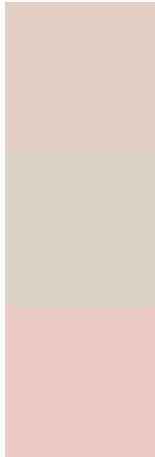


This preview shows how white text looks on a background with the XYZ color 63.3280, 64.6187,

Color Blindness Simulation

Color vision deficiency is a very complex topic, and I could not describe the different causes any better than Wikipedia does, so if you want to learn more, you should check out their [article about color blindness](#).

Dichromacy



Original Color

63.3280, 64.6187, 61.3595

Protanopia

61.7399, 64.8761, 62.0916

Deuteranopia

66.0261, 64.5760, 61.8078



Tritanopia

66.1370, 64.3203, 75.9471

Trichromacy



Original Color

63.3280, 64.6187, 61.3595

Protanomaly

62.3937, 64.8478, 62.0517

Deuteranomaly

64.9496, 64.3728, 61.8253

Tritanomaly

65.0293, 64.2198, 70.5963

Monochromacy



Original Color

63.3280, 64.6187, 61.3595

Achromatopsia

61.9161, 65.1406, 70.9381

Achromatomaly

62.5061, 65.1483, 67.6730

CSS Examples

Text

The CSS property to change the color of the text to XYZ 63.3280, 64.6187, 61.3595 is called "color". The color property can be set on classes, ids or directly on the HTML element.

This example shows how text in the color rgb(225, 207, 196) looks like.

```
.text, #text, p{  
    color:rgb(225, 207, 196)  
}
```

If you want to add a text shadow in that color use the text-shadow property, you can generate a text shadow directly with our [CSS Text Shadow Generator](#).

Here you see how black text with a 4 pixel rgb(225, 207, 196) colored shadow looks like.

```
.shadow{ text-shadow: 4px 4px 2px rgb(225, 207, 196) }
```

Border

The CSS property to change the border of an element to XYZ 63.3280, 64.6187, 61.3595 is called "border". The border property can be set on classes, ids or directly on the HTML element.

This example shows the color as border, it can be applied via the CSS property "border" or "border-color".

```
.border, #border, table{ border:4px solid rgb(225, 207, 196) }
```


If only the border color should be changed use the property border-color.

```
.border{ border-color:rgb(225, 207, 196) }
```

If you want to add a box shadow in that color use:

Here you see how a box with a 4 pixel rgb(225, 207, 196) colored shadow looks like.

```
.boxshadow{ -moz-box-shadow:4px 4px 4px  
4px rgb(225, 207, 196); -webkit-box-  
shadow:4px 4px 4px 4px rgb(225, 207, 196);  
box-shadow:4px 4px 4px 4px rgb(225, 207,  
196) }
```

Background

The CSS property to change the background color of an element to XYZ 63.3280, 64.6187, 61.3595 is called "background". The background property can be set on classes, ids or directly on the HTML element.

```
.background, #background, body{  
background: rgb(225, 207, 196) }
```

If only the background color should be changed can be used:

```
.background{ background-color: rgb(225,  
207, 196) }
```

This example shows the color as background, it is applied via the CSS property "background".

To optimize and compress your CSS code, you can use our [online CSS compressor and optimizer](#) based on csstidy. If you want to create a linear or radial gradient as background or border, check our [CSS Gradient Generator](#).

Hey! You found this booklet interesting? Support Converting Colors with the new Membership Option!

The pro membership hides all ads, plus gives you double the colors in the color bucket, and more awesome pro features!

[Learn more, Memberships starting at \\$2.50/m!](#)

**Follow me
on Twitter!**

@ConvertingColor