

Converting Colors

XYZ(63.1014, 62.5893, 64.4523)

Have a look what the booklet for
XYZ(63.1014, 62.5893, 64.4523)
contains.

XYZ(63.1452, 62.6741, 64.6463)	3
<i>Conversions</i>	4
<i>Details</i>	6
<i>Harmonies</i>	12
<i>Previews</i>	24
<i>Color Blindness Simulation</i>	28
<i>CSS Examples</i>	31

Color

**XYZ(63.1452, 62.6741,
64.6463)**

Conversions

Conversions Part 1

Format	Color
Hex	E2CACA
RGB	226, 202, 202
RGB Percent	89%, 79%, 79%
CMY	0.1137, 0.2078, 0.2078
CMYK	0.00, 0.11, 0.11, 0.11
HSL	0°, 29%, 84%
HSV	0°, 11%, 89%
XYZ	63.1452, 62.6741, 64.6463
YIQ	209.1760, 14.3040, 5.0880

Conversions

Conversions Part 2

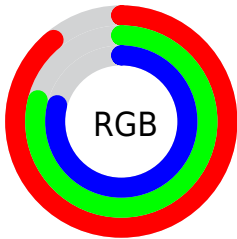
Format	Color
R _Y B	226, 202, 202
Decimal	14863050
CIE Lab	83.27, 8.39, 3.06
CIE LCh	83, 8.935, 20.028
Yxy	62.6741, 0.3315, 0.3291
Android (android.graphics.Color)	4293053130 (0xFFE2CACA)
YUV	209.1760, -3.5378, 14.7546
Hunter-Lab	79.1670, 3.8330, 7.0018

Details

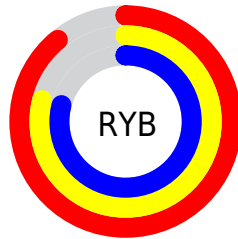
The XYZ color **63.1452, 62.6741, 64.6463** is a light color, and the websafe version is hex **CCCCCC**. A complement of this color would be **65.2805, 72.4387, 82.4935**, and the grayscale version is **60.7365, 63.8995, 69.5866**.

A 20% lighter version of the original color is **95.0500, 100.0000, 108.9000**, and **32.7298, 31.9759, 32.4639** is the 20% darker color. If you saturate the color by 10%, you get **55.7439, 51.8443, 49.9299**, and if you desaturate by 10%, it is **71.7182, 75.2187, 81.6882**.

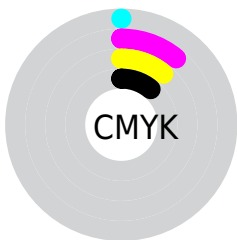
Distribution



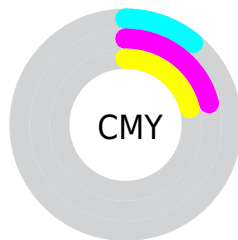
- Red (89%)
- Green (79%)
- Blue (79%)



- Red (89%)
- Yellow (79%)
- Blue (79%)



- Cyan (0%)
- Magenta (11%)
- Yellow (11%)
- Black (11%)



- Cyan (11%)
- Magenta (21%)
- Yellow (21%)

Brightness & Saturation Gradients

These gradients show how the XYZ color 63.1452, 62.6741, 64.6463 changes by changing the brightness by 10 percent. The first figure shows a shift by +10% for each color and the second figure -10%.

Similar to the brightness gradients but the following saturation gradients show a change of the XYZ color 63.1452, 62.6741, 64.6463 by changing the saturation by 10% instead.

63.1452, 62.6741,
64.6463

63.1452, 62.6741,
64.6463

425.7476,
434.3858, 459.7912

46.2178, 45.5776,
46.7248

108.4596,
108.6992, 113.1496

32.6231, 31.9126,
32.4654

137.5773,
138.3966, 144.5685

21.9957, 21.2948,
21.4494

171.4891,
173.0631, 181.3236

13.9703, 13.3396,
13.2585

210.5604,
213.0831, 223.8334

8.1816, 7.6628,
7.4740

255.1565,
258.8409, 272.5166

4.2641, 3.8800,
3.6773

305.6429,

1.8526, 1.6067,

310.7211, 327.7916

1.4501

362.3848,
369.1079, 390.0769

■ 0.5491, 0.3621,
0.1803

■ 0.0000, 0.0000,
0.0000

■ 63.1452, 62.6741,
64.6463

■ 63.1452, 62.6741,
64.6463

■ 55.7439, 51.8443,
49.9299

■ 71.7182, 75.2187,
81.6882

■ 49.4585, 42.6472,
37.4344

■ 81.5052, 89.5394,
101.1459

■ 44.2365, 35.0060,
27.0532

■ 85.1743, 94.9089,
108.4378

■ 40.0192, 28.8347,
18.6694

■ 36.7419, 24.0390,
12.1549

■ 34.3329, 20.5136,
7.3664

■ 32.7096, 18.1381,
4.1403

■ 31.7740, 16.7688,
2.2813

■ 31.3647, 16.1697,
1.4680

Harmonies

Analogous

The Analogous color harmony consists of three colors that are next to each other on the color wheel.



63.3214, 62.6741, 70.1090



63.1452, 62.6741, 64.6463



61.9995, 62.6741, 60.3743

Triad

The Triadic color harmony groups three colors that are evenly spaced from another and form a triangle on the color wheel.



63.1452, 62.6741, 64.6463



56.7555, 62.6741, 61.6033



58.9259, 62.6741, 79.3180

Complementary

The Complementary color scheme is a pair of colors which are on the opposite of each other on the color wheel.



63.1452, 62.6741, 64.6463



65.2805, 72.4387, 82.4935

Split Complementary

Split-complementary colors differ from the complementary color scheme. The scheme consists of three colors, the original color and two neighbors of the complement color.



57.2045, 62.6741, 76.7639



63.1452, 62.6741, 64.6463



55.9695, 62.6741, 66.4073

Square

The Square scheme is like the rectangle color scheme, but the four colors are evenly spaced on the color wheel.



63.1452, 62.6741, 64.6463



58.3009, 62.6741, 58.6846



56.1321, 62.6741, 71.9675



60.8570, 62.6741, 78.7832

Rectangle

The Rectangle color scheme consists of four colors that form a rectangle on the color wheel.



63.1452, 62.6741, 64.6463



60.8536, 62.6741, 58.6815



56.1321, 62.6741, 71.9675



58.3043, 62.6741, 78.7871

Sweetspot

The Sweet Spot groups the original color and five complimentary colors.



63.1469, 62.6769, 64.6476



91.4509, 94.7336, 101.7446



66.2127, 63.9016, 80.7965



19.3736, 19.9833, 21.3786



0.0000, 0.0000, 0.0000



20.3446, 21.4041, 23.3091

Same Dimension

The Same Dimension uses a secret algorithm to generate beautiful new colors.



63.1469, 62.6769, 64.6476



80.4877, 78.6918, 79.9488



66.0720, 68.5269, 65.6226



13.7075, 13.7009, 14.2289



17.8935, 9.2249, 0.8375



1.2403, 0.6396, 0.0581

Inverse Universe

The Inverse Universe completely reimagines the original color for something new.



65.2805, 72.4387, 82.4935



83.8865, 94.2423, 108.3770



62.1319, 66.1415, 81.4440



14.1164, 15.5720, 17.6494



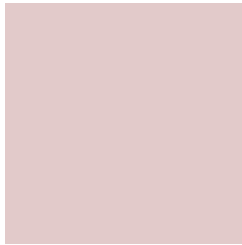
23.3411, 34.1518, 46.4101



1.6179, 2.3673, 3.2169

Previews

White Background



This preview shows how the XYZ color 63.1452, 62.6741, 64.6463 looks on a white background.

Color Contrast Check

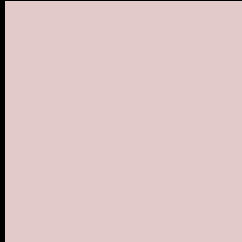
Large Text (above 18pt) WCAG AA × Fail

Any Text WCAG AA × Fail

Large Text (above 18pt) WCAG AAA × Fail

Any Text WCAG AAA × Fail

Black Background



This preview shows how the XYZ color 63.1452, 62.6741, 64.6463 looks on a black background.

Color Contrast Check

Large Text (above 18pt) WCAG AA ✓ Pass

Any Text WCAG AA ✓ Pass

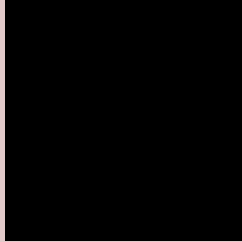
Large Text (above 18pt) WCAG AAA ✓ Pass

Any Text WCAG AAA ✓ Pass

If you want to check with other color combinations, try the [Color Contrast Checker](#).

XYZ 63.1452, 62.6741, 64.6463

Background



This preview shows how black text looks on a background with the XYZ color 63.1452, 62.6741, 64.6463.



This preview shows how white text looks on a background with the XYZ color 63.1452, 62.6741,

Color Blindness Simulation

Color vision deficiency is a very complex topic, and I could not describe the different causes any better than Wikipedia does, so if you want to learn more, you should check out their [article about color blindness](#).

Dichromacy



Original Color

63.1452, 62.6741, 64.6463

Protanopia

60.4836, 63.0305, 66.7359

Deuteranopia

63.8604, 62.6956, 64.6128



Tritanopia

65.0439, 62.7604, 73.6515

Trichromacy



Original Color

63.1452, 62.6741, 64.6463

Protanomaly

61.3457, 62.7740, 66.0101

Deuteranomaly

63.5422, 62.5315, 64.5979

Tritanomaly

64.3231, 62.8073, 70.3609

Monochromacy



Original Color

63.1452, 62.6741, 64.6463

Achromatopsia

60.6036, 63.7597, 69.4343

Achromatomaly

61.2362, 63.0459, 67.3341

CSS Examples

Text

The CSS property to change the color of the text to XYZ 63.1452, 62.6741, 64.6463 is called "color". The color property can be set on classes, ids or directly on the HTML element.

This example shows how text in the color rgb(226, 202, 202) looks like.

```
.text, #text, p{  
    color:rgb(226, 202, 202)  
}
```

If you want to add a text shadow in that color use the text-shadow property, you can generate a text shadow directly with our [CSS Text Shadow Generator](#).

Here you see how black text with a 4 pixel rgb(226, 202, 202) colored shadow looks like.

```
.shadow{ text-shadow: 4px 4px 2px rgb(226, 202, 202) }
```

Border

The CSS property to change the border of an element to XYZ 63.1452, 62.6741, 64.6463 is called "border". The border property can be set on classes, ids or directly on the HTML element.

This example shows the color as border, it can be applied via the CSS property "border" or "border-color".

```
.border, #border, table{ border:4px solid rgb(226, 202, 202) }
```


If only the border color should be changed use the property `border-color`.

```
.border{ border-color:rgb(226, 202, 202) }
```

If you want to add a box shadow in that color use:

Here you see how a box with a 4 pixel `rgb(226, 202, 202)` colored shadow looks like.

```
.boxshadow{ -moz-box-shadow:4px 4px 4px  
4px rgb(226, 202, 202); -webkit-box-  
shadow:4px 4px 4px 4px rgb(226, 202, 202);  
box-shadow:4px 4px 4px 4px rgb(226, 202,  
202) }
```

Background

The CSS property to change the background color of an element to XYZ 63.1452, 62.6741, 64.6463 is called "background". The background property can be set on classes, ids or directly on the HTML element.

```
.background, #background, body{  
background: rgb(226, 202, 202) }
```

If only the background color should be changed can be used:

```
.background{ background-color: rgb(226,  
202, 202) }
```

This example shows the color as background, it is applied via the CSS property "background".

To optimize and compress your CSS code, you can use our [online CSS compressor and optimizer](#) based on csstidy. If you want to create a linear or radial gradient as background or border, check our [CSS Gradient Generator](#).

Hey! You found this booklet interesting? Support Converting Colors with the new Membership Option!

The pro membership hides all ads, plus gives you double the colors in the color bucket, and more awesome pro features!

[Learn more, Memberships starting at \\$2.50/m!](#)

**Follow me
on Twitter!**

@ConvertingColor