

Converting Colors

XYZ(63.1426, 62.5576, 54.0943)

Have a look what the booklet for
XYZ(63.1426, 62.5576, 54.0943)
contains.

XYZ(63.1426, 62.5576, 54.0943)	3
<i>Conversions</i>	4
<i>Details</i>	6
<i>Harmonies</i>	12
<i>Previews</i>	24
<i>Color Blindness Simulation</i>	28
<i>CSS Examples</i>	31

Color

**XYZ(63.1426, 62.5576,
54.0943)**

Conversions

Conversions Part 1

Format	Color
Hex	E9C9B8
RGB	233, 201, 184
RGB Percent	91%, 79%, 72%
CMY	0.0863, 0.2117, 0.2784
CMYK	0.00, 0.14, 0.21, 0.09
HSL	21°, 53%, 82%
HSV	21°, 21%, 91%
XYZ	63.1426, 62.5576, 54.0943
YIQ	208.6300, 24.5290, 1.4970

Conversions

Conversions Part 2

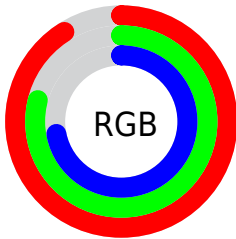
Format	Color
R _Y B	233, 210, 184
Decimal	15321528
CIE Lab	83.21, 8.65, 12.65
CIE LCh	83, 15.325, 55.619
Yxy	62.5576, 0.3512, 0.3479
Android (android.graphics.Color)	4293511608 (0xFFE9C9B8)
YUV	208.6300, -12.1426, 21.3725
Hunter-Lab	79.0934, 4.0885, 14.8152

Details

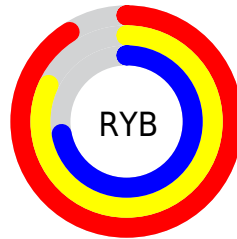
The XYZ color **63.1426, 62.5576, 54.0943** is a light color, and the websafe version is hex **FFCCCC**. A complement of this color would be **59.0305, 65.1836, 86.5615**, and the grayscale version is **60.4300, 63.5771, 69.2355**.

A 20% lighter version of the original color is **92.7282, 99.0713, 96.6734**, and **32.6619, 31.8532, 25.8996** is the 20% darker color. If you saturate the color by 10%, you get **57.5262, 54.9164, 41.1484**, and if you desaturate by 10%, it is **69.5161, 71.0680, 69.2786**.

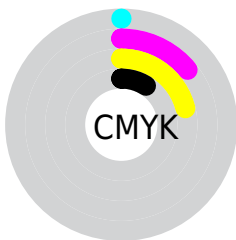
Distribution



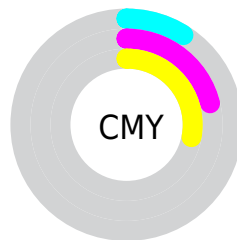
- Red (91%)
- Green (79%)
- Blue (72%)



- Red (91%)
- Yellow (82%)
- Blue (72%)



- Cyan (0%)
- Magenta (14%)
- Yellow (21%)
- Black (9%)




- Cyan (9%)
- Magenta (21%)
- Yellow (28%)

Brightness & Saturation Gradients


These gradients show how the XYZ color 63.1426, 62.5576, 54.0943 changes by changing the brightness by 10 percent. The first figure shows a shift by +10% for each color and the second figure -10%.


Similar to the brightness gradients but the following saturation gradients show a change of the XYZ color 63.1426, 62.5576, 54.0943 by changing the saturation by 10% instead.


 63.1426, 62.5576,
54.0943

 63.1426, 62.5576,
54.0943


425.7383,
433.9621, 419.6543

 46.2157, 45.4834,
38.2834


 108.4559,
108.5310, 97.6705

 32.6214, 31.8384,
25.8992


137.5729,
138.1990, 126.2728

 21.9944, 21.2381,
16.5231


171.4840,
172.8338, 159.9760

 13.9694, 13.2981,
9.7367

210.5546,
212.8196, 199.1987

 8.1809, 7.6342,
5.1214

255.1499,
258.5410, 244.3593

 4.2637, 3.8618,
2.2587

305.6354,

 1.8524, 1.5965,

310.3823, 295.8764

0.7079

362.3764,
368.7279, 354.1685

■ 0.5489, 0.3553,
0.0000

■ 0.0000, 0.0000,
0.0000

■ 63.1426, 62.5576,
54.0943

■ 63.1426, 62.5576,
54.0943

■ 57.5262, 54.9164,
41.1484

■ 69.5161, 71.0680,
69.2786

■ 52.6318, 48.1078,
30.3300

■ 76.6696, 80.4659,
86.7973

■ 48.4293, 42.1047,
21.5244

■ 84.6314, 90.7798,
106.7452

■ 44.8840, 36.8754,
14.6047

■ 87.4144, 96.0637,
108.5427

■ 41.9580, 32.3857,
9.4290

■ 39.6087, 28.5987,
5.8353

■ 37.7867, 25.4733,
3.6299

■ 36.5363, 23.1876,
2.5500

Harmonies

Analogous

The Analogous color harmony consists of three colors that are next to each other on the color wheel.



65.4117, 62.5576, 60.5009



63.1426, 62.5576, 54.0943



59.9488, 62.5576, 51.4419

Triad

The Triadic color harmony groups three colors that are evenly spaced from another and form a triangle on the color wheel.



63.1426, 62.5576, 54.0943



53.3101, 62.5576, 66.7257



62.2664, 62.5576, 85.9927

Complementary

The Complementary color scheme is a pair of colors which are on the opposite of each other on the color wheel.



63.1426, 62.5576, 54.0943



59.0305, 65.1836, 86.5615

Split Complementary

Split-complementary colors differ from the complementary color scheme. The scheme consists of three colors, the original color and two neighbors of the complement color.



58.9722, 62.5576, 88.0489



63.1426, 62.5576, 54.0943



53.8791, 62.5576, 76.3416

Square

The Square scheme is like the rectangle color scheme, but the four colors are evenly spaced on the color wheel.



63.1426, 62.5576, 54.0943



54.3376, 62.5576, 58.2903



55.9218, 62.5576, 84.3695



64.8927, 62.5576, 78.9850

Rectangle

The Rectangle color scheme consists of four colors that form a rectangle on the color wheel.



63.1426, 62.5576, 54.0943



57.7544, 62.5576, 51.9599



55.9218, 62.5576, 84.3695



61.1970, 62.5576, 87.3122

Sweetspot

The Sweet Spot groups the original color and five complimentary colors.



63.1443, 62.5604, 54.0956



89.5789, 92.8441, 95.4040



63.2264, 56.5978, 73.0112



19.0507, 19.7109, 20.1198



0.0000, 0.0000, 0.0000



20.3446, 21.4041, 23.3091

Same Dimension

The Same Dimension uses a secret algorithm to generate beautiful new colors.



63.1443, 62.5604, 54.0956



74.5598, 72.8091, 59.5584



69.1366, 74.5451, 56.0931



15.4929, 15.9089, 15.7729



20.8359, 13.3660, 1.4817



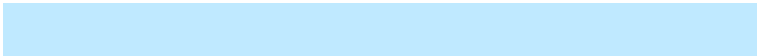
1.7232, 1.2236, 0.1454

Inverse Universe

The Inverse Universe completely reimagines the original color for something new.



59.0305, 65.1836, 86.5615



68.7028, 76.5369, 105.7598



53.3622, 53.8469, 84.6721



15.0522, 16.1908, 19.2541



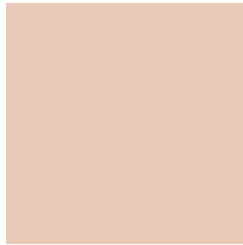
14.8500, 16.3470, 46.1156



1.2554, 1.4622, 3.6509

Previews

White Background



This preview shows how the XYZ color 63.1426, 62.5576, 54.0943 looks on a white background.

Color Contrast Check

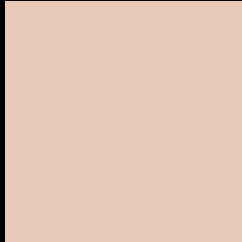
Large Text (above 18pt) WCAG AA × Fail

Any Text WCAG AA × Fail

Large Text (above 18pt) WCAG AAA × Fail

Any Text WCAG AAA × Fail

Black Background



This preview shows how the XYZ color 63.1426, 62.5576, 54.0943 looks on a black background.

Color Contrast Check

Large Text (above 18pt) WCAG AA ✓ Pass

Any Text WCAG AA ✓ Pass

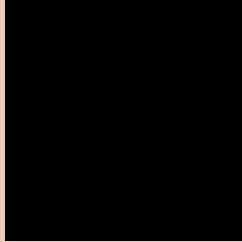
Large Text (above 18pt) WCAG AAA ✓ Pass

Any Text WCAG AAA ✓ Pass

If you want to check with other color combinations, try the [Color Contrast Checker](#).

XYZ 63.1426, 62.5576, 54.0943

Background



This preview shows how black text looks on a background with the XYZ color 63.1426, 62.5576, 54.0943.



This preview shows how white text looks on a background with the XYZ color 63.1426, 62.5576,

Color Blindness Simulation

Color vision deficiency is a very complex topic, and I could not describe the different causes any better than Wikipedia does, so if you want to learn more, you should check out their [article about color blindness](#).

Dichromacy



Original Color

63.1426, 62.5576, 54.0943

Protanopia

59.6014, 62.8124, 55.9964

Deuteranopia

63.8981, 62.6021, 54.0630



Tritanopia

66.4420, 62.5188, 70.8528

Trichromacy



Original Color

63.1426, 62.5576, 54.0943

Protanomaly

60.8184, 62.7374, 55.3584

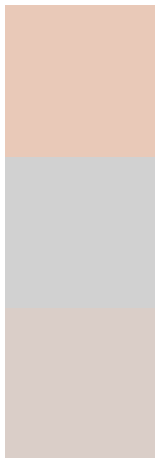
Deuteranomaly

63.5670, 62.4314, 54.0475

Tritanomaly

65.1157, 62.3146, 64.4731

Monochromacy



Original Color

63.1426, 62.5576, 54.0943

Achromatopsia

60.6036, 63.7597, 69.4343

Achromatomaly

61.4101, 63.2182, 63.6092

CSS Examples

Text

The CSS property to change the color of the text to XYZ 63.1426, 62.5576, 54.0943 is called "color". The color property can be set on classes, ids or directly on the HTML element.

This example shows how text in the color `rgb(233, 201, 184)` looks like.

```
.text, #text, p{  
    color:rgb(233, 201, 184)  
}
```

If you want to add a text shadow in that color use the text-shadow property, you can generate a text shadow directly with our [CSS Text Shadow Generator](#).

Here you see how black text with a 4 pixel rgb(233, 201, 184) colored shadow looks like.

```
.shadow{ text-shadow: 4px 4px 2px rgb(233, 201, 184) }
```

Border

The CSS property to change the border of an element to XYZ 63.1426, 62.5576, 54.0943 is called "border". The border property can be set on classes, ids or directly on the HTML element.

This example shows the color as border, it can be applied via the CSS property "border" or "border-color".

```
.border, #border, table{ border:4px solid rgb(233, 201, 184) }
```


If only the border color should be changed use the property `border-color`.

```
.border{ border-color:rgb(233, 201, 184) }
```

If you want to add a box shadow in that color use:

Here you see how a box with a 4 pixel `rgb(233, 201, 184)` colored shadow looks like.

```
.boxshadow{ -moz-box-shadow:4px 4px 4px  
4px rgb(233, 201, 184); -webkit-box-  
shadow:4px 4px 4px 4px rgb(233, 201, 184);  
box-shadow:4px 4px 4px 4px rgb(233, 201,  
184) }
```

Background

The CSS property to change the background color of an element to XYZ 63.1426, 62.5576, 54.0943 is called "background". The background property can be set on classes, ids or directly on the HTML element.

```
.background, #background, body{  
background: rgb(233, 201, 184) }
```

If only the background color should be changed can be used:

```
.background{ background-color: rgb(233,  
201, 184) }
```

This example shows the color as background, it is applied via the CSS property "background".

To optimize and compress your CSS code, you can use our [online CSS compressor and optimizer](#) based on csstidy. If you want to create a linear or radial gradient as background or border, check our [CSS Gradient Generator](#).

Hey! You found this booklet interesting? Support Converting Colors with the new Membership Option!

The pro membership hides all ads, plus gives you double the colors in the color bucket, and more awesome pro features!

[Learn more, Memberships starting at \\$2.50/m!](#)

**Follow me
on Twitter!**

@ConvertingColor