

Converting Colors

XYZ(63.1605, 63.6938, 66.8569)

Have a look what the booklet for
XYZ(63.1605, 63.6938, 66.8569)
contains.

XYZ(63.2822, 63.7584, 66.7289)	3
<i>Conversions</i>	4
<i>Details</i>	6
<i>Harmonies</i>	12
<i>Previews</i>	24
<i>Color Blindness Simulation</i>	28
<i>CSS Examples</i>	31

Color

**XYZ(63.2822, 63.7584,
66.7289)**

Conversions

Conversions Part 1

Format	Color
Hex	DFCD CD
RGB	223, 205, 205
RGB Percent	87%, 80%, 80%
CMY	0.1255, 0.1961, 0.1961
CMYK	0.00, 0.08, 0.08, 0.13
HSL	0°, 22%, 84%
HSV	0°, 8%, 87%
XYZ	63.2822, 63.7584, 66.7289
YIQ	210.3820, 10.7280, 3.8160

Conversions

Conversions Part 2

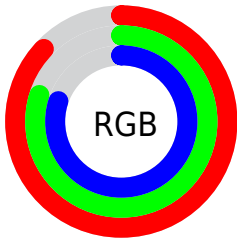
Format	Color
R _Y B	223, 205, 205
Decimal	14667213
CIE Lab	83.84, 6.26, 2.26
CIE LCh	84, 6.651, 19.823
Yxy	63.7584, 0.3266, 0.3290
Android (android.graphics.Color)	4292857293 (0xFFDFCDCD)
YUV	210.3820, -2.6533, 11.0660
Hunter-Lab	79.8489, 1.7302, 6.3461

Details

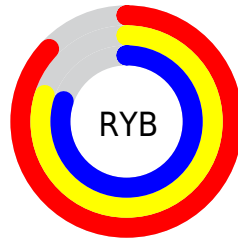
The XYZ color **63.2822, 63.7584, 66.7289** is a light color, and the websafe version is hex **CCCCCC**. A complement of this color would be **64.8836, 71.0810, 80.1131**, and the grayscale version is **61.5230, 64.7270, 70.4877**.

A 20% lighter version of the original color is **95.0500, 100.0000, 108.9000**, and **32.8010, 32.6924, 33.8596** is the 20% darker color. If you saturate the color by 10%, you get **55.8217, 52.8421, 51.8944**, and if you desaturate by 10%, it is **71.8900, 76.3537, 83.8402**.

Distribution



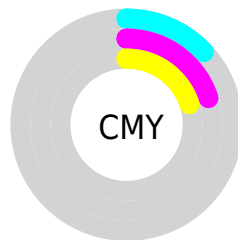
- Red (87%)
- Green (80%)
- Blue (80%)



- Red (87%)
- Yellow (80%)
- Blue (80%)



- Cyan (0%)
- Magenta (8%)
- Yellow (8%)
- Black (13%)



- Cyan (13%)
- Magenta (20%)
- Yellow (20%)

Brightness & Saturation Gradients

These gradients show how the XYZ color 63.2822, 63.7584, 66.7289 changes by changing the brightness by 10 percent. The first figure shows a shift by +10% for each color and the second figure -10%.

Similar to the brightness gradients but the following saturation gradients show a change of the XYZ color 63.2822, 63.7584, 66.7289 by changing the saturation by 10% instead.

63.2822, 63.7584,
66.7289

63.2822, 63.7584,
66.7289

426.2363,
438.3167, 467.4544

46.3290, 46.4550,
48.4041

108.6561,
110.2629, 116.1688

32.7113, 32.6050,
33.7848

137.8075,
140.2328, 148.1211

22.0635, 21.8241,
22.4523

171.7557,
175.1937, 185.4529

14.0205, 13.7277,
13.9881

210.8661,
215.5300, 228.5828

8.2167, 7.9315,
7.9737

255.5040,
261.6260, 277.9294

4.2869, 4.0511,
3.9906

306.0348,

1.8657, 1.7022,

313.8662, 333.9111

1.6202

362.8238,
372.6350, 396.9466

■ 0.5568, 0.4251,
0.3052

■ 0.0000, 0.0000,
0.0000

■ 63.2822, 63.7584,
66.7289

■ 63.2822, 63.7584,
66.7289

■ 55.8217, 52.8421,
51.8944

■ 71.8900, 76.3537,
83.8402

■ 49.4549, 43.5259,
39.2368

■ 81.6849, 90.6857,
103.3142

■ 44.1321, 35.7373,
28.6551

■ 84.2418, 94.4281,
108.3942

■ 39.7977, 29.3947,
20.0386

■ 36.3907, 24.4092,
13.2661

■ 33.8437, 20.6819,
8.2033

■ 32.0798, 18.1005,
4.6977

■ 31.0088, 16.5330,
2.5697

■ 30.5025, 15.7919,
1.5640

Harmonies

Analogous

The Analogous color harmony consists of three colors that are next to each other on the color wheel.



63.4082, 63.7584, 70.8535



63.2822, 63.7584, 66.7289



62.4312, 63.7584, 63.4537

Triad

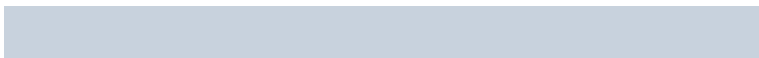
The Triadic color harmony groups three colors that are evenly spaced from another and form a triangle on the color wheel.



63.2822, 63.7584, 66.7289



58.4790, 63.7584, 64.3592



60.1054, 63.7584, 77.6470

Complementary

The Complementary color scheme is a pair of colors which are on the opposite of each other on the color wheel.



63.2822, 63.7584, 66.7289



64.8836, 71.0810, 80.1131

Split Complementary

Split-complementary colors differ from the complementary color scheme. The scheme consists of three colors, the original color and two neighbors of the complement color.



58.8058, 63.7584, 75.7534



63.2822, 63.7584, 66.7289



57.8769, 63.7584, 68.0100

Square

The Square scheme is like the rectangle color scheme, but the four colors are evenly spaced on the color wheel.



63.2822, 63.7584, 66.7289



59.6526, 63.7584, 62.1241



57.9955, 63.7584, 72.1867



61.5583, 63.7584, 77.2703

Rectangle

The Rectangle color scheme consists of four colors that form a rectangle on the color wheel.



63.2822, 63.7584, 66.7289



61.5747, 63.7584, 62.1399



57.9955, 63.7584, 72.1867



59.6365, 63.7584, 77.2520

Sweetspot

The Sweet Spot groups the original color and five complimentary colors.



63.2840, 63.7612, 66.7303



92.6345, 96.4656, 104.0977



65.5829, 64.6793, 78.8406



19.8529, 20.6846, 22.3315



0.0000, 0.0000, 0.0000



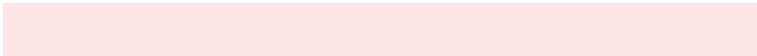
20.3446, 21.4041, 23.3091

Same Dimension

The Same Dimension uses a secret algorithm to generate beautiful new colors.



63.2840, 63.7612, 66.7303



83.6122, 83.2639, 86.1600



65.4983, 68.1898, 67.4684



13.7075, 13.7010, 14.2289



17.8936, 9.2251, 0.8375



1.2404, 0.6396, 0.0581

Inverse Universe

The Inverse Universe completely reimagines the original color for something new.



64.8836, 71.0810, 80.1131



86.2811, 95.4769, 108.4891



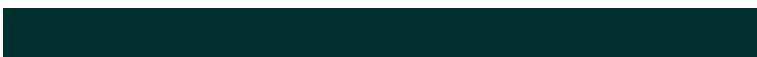
62.5436, 66.4009, 79.3331



14.1164, 15.5719, 17.6493



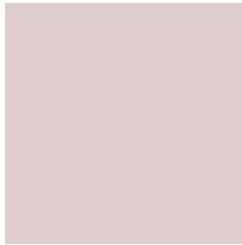
23.3397, 34.1489, 46.4096



1.6179, 2.3672, 3.2169

Previews

White Background



This preview shows how the XYZ color 63.2822, 63.7584, 66.7289 looks on a white background.

Color Contrast Check

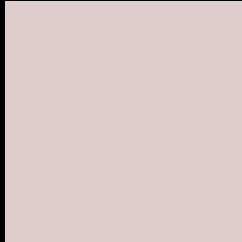
Large Text (above 18pt) WCAG AA × Fail

Any Text WCAG AA × Fail

Large Text (above 18pt) WCAG AAA × Fail

Any Text WCAG AAA × Fail

Black Background



This preview shows how the XYZ color 63.2822, 63.7584, 66.7289 looks on a black background.

Color Contrast Check

Large Text (above 18pt) WCAG AA ✓ Pass

Any Text WCAG AA ✓ Pass

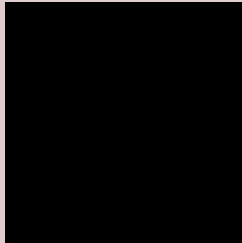
Large Text (above 18pt) WCAG AAA ✓ Pass

Any Text WCAG AAA ✓ Pass

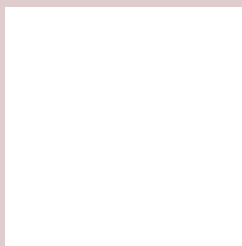
If you want to check with other color combinations, try the [Color Contrast Checker](#).

XYZ 63.2822, 63.7584, 66.7289

Background



This preview shows how black text looks on a background with the XYZ color 63.2822, 63.7584, 66.7289.



This preview shows how white text looks on a background with the XYZ color 63.2822, 63.7584,

Color Blindness Simulation

Color vision deficiency is a very complex topic, and I could not describe the different causes any better than Wikipedia does, so if you want to learn more, you should check out their [article about color blindness](#).

Dichromacy



Original Color

63.2822, 63.7584, 66.7289

Protanopia

61.2589, 63.7629, 68.1103

Deuteranopia

64.8942, 63.5203, 67.2329



Tritanopia

65.1935, 63.8339, 75.9029

Trichromacy



Original Color

63.2822, 63.7584, 66.7289

Protanomaly

62.0687, 63.8336, 67.4423

Deuteranomaly

64.1751, 63.4990, 67.2667

Tritanomaly

64.4709, 63.8881, 72.5520

Monochromacy



Original Color

63.2822, 63.7584, 66.7289

Achromatopsia

61.2578, 64.4480, 70.1838

Achromatomaly

61.9654, 64.1129, 68.7836

CSS Examples

Text

The CSS property to change the color of the text to XYZ 63.2822, 63.7584, 66.7289 is called "color". The color property can be set on classes, ids or directly on the HTML element.

This example shows how text in the color `rgb(223, 205, 205)` looks like.

```
.text, #text, p{  
    color:rgb(223, 205, 205)  
}
```

If you want to add a text shadow in that color use the text-shadow property, you can generate a text shadow directly with our [CSS Text Shadow Generator](#).

Here you see how black text with a 4 pixel rgb(223, 205, 205) colored shadow looks like.

```
.shadow{ text-shadow: 4px 4px 2px rgb(223, 205, 205) }
```

Border

The CSS property to change the border of an element to XYZ 63.2822, 63.7584, 66.7289 is called "border". The border property can be set on classes, ids or directly on the HTML element.

This example shows the color as border, it can be applied via the CSS property "border" or "border-color".

```
.border, #border, table{ border:4px solid rgb(223, 205, 205) }
```


If only the border color should be changed use the property `border-color`.

```
.border{ border-color:rgb(223, 205, 205) }
```

If you want to add a box shadow in that color use:

Here you see how a box with a 4 pixel `rgb(223, 205, 205)` colored shadow looks like.

```
.boxshadow{ -moz-box-shadow:4px 4px 4px  
4px rgb(223, 205, 205); -webkit-box-  
shadow:4px 4px 4px 4px rgb(223, 205, 205);  
box-shadow:4px 4px 4px 4px rgb(223, 205,  
205) }
```

Background

The CSS property to change the background color of an element to XYZ 63.2822, 63.7584, 66.7289 is called "background". The background property can be set on classes, ids or directly on the HTML element.

```
.background, #background, body{  
background: rgb(223, 205, 205) }
```

If only the background color should be changed can be used:

```
.background{ background-color: rgb(223,  
205, 205) }
```

This example shows the color as background, it is applied via the CSS property "background".

To optimize and compress your CSS code, you can use our [online CSS compressor and optimizer](#) based on csstidy. If you want to create a linear or radial gradient as background or border, check our [CSS Gradient Generator](#).

Hey! You found this booklet interesting? Support Converting Colors with the new Membership Option!

The pro membership hides all ads, plus gives you double the colors in the color bucket, and more awesome pro features!

[Learn more, Memberships starting at \\$2.50/m!](#)

**Follow me
on Twitter!**

@ConvertingColor