

Converting Colors

XYZ(63.2299, 59.5080, 65.5596)

Have a look what the booklet for
XYZ(63.2299, 59.5080, 65.5596)
contains.

XYZ(63.2478, 59.6554, 65.3079)	3
<i>Conversions</i>	4
<i>Details</i>	6
<i>Harmonies</i>	12
<i>Previews</i>	24
<i>Color Blindness Simulation</i>	28
<i>CSS Examples</i>	31

Color

**XYZ(63.2478, 59.6554,
65.3079)**

Conversions

Conversions Part 1

Format	Color
Hex	E8C1CC
RGB	232, 193, 204
RGB Percent	91%, 76%, 80%
CMY	0.0902, 0.2431, 0.2000
CMYK	0.00, 0.17, 0.12, 0.09
HSL	343°, 46%, 83%
HSV	343°, 17%, 91%
XYZ	63.2478, 59.6554, 65.3079
YIQ	205.9150, 19.7130, 11.6890

Conversions

Conversions Part 2

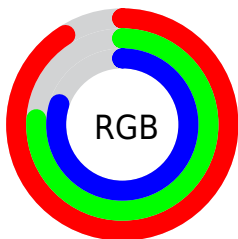
Format	Color
R _Y B	232, 193, 204
Decimal	15253964
CIE Lab	81.65, 15.61, -0.30
CIE LCh	82, 15.617, 358.882
Yxy	59.6554, 0.3360, 0.3170
Android (android.graphics.Color)	4293444044 (0xFFE8C1CC)
YUV	205.9150, -0.9441, 22.8765
Hunter-Lab	77.2369, 11.0056, 3.9330

Details

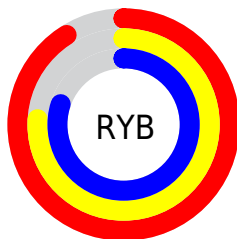
The XYZ color **63.2478, 59.6554, 65.3079** is a light color, and the websafe version is hex **FFCCCC**. A complement of this color would be **63.9025, 74.2727, 79.3783**, and the grayscale version is **58.6103, 61.6626, 67.1506**.

A 20% lighter version of the original color is **93.4756, 96.8512, 108.3752**, and **32.6421, 29.8974, 32.9045** is the 20% darker color. If you saturate the color by 10%, you get **56.6238, 49.4351, 53.7641**, and if you desaturate by 10%, it is **70.8935, 71.5755, 78.2480**.

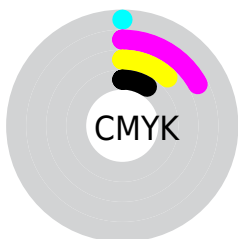
Distribution



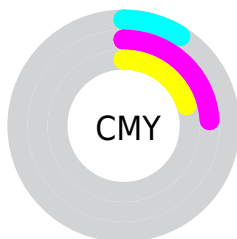
- Red (91%)
- Green (76%)
- Blue (80%)



- Red (91%)
- Yellow (76%)
- Blue (80%)



- Cyan (0%)
- Magenta (17%)
- Yellow (12%)
- Black (9%)



- Cyan (9%)
- Magenta (24%)
- Yellow (20%)

Brightness & Saturation Gradients

These gradients show how the XYZ color 63.2478, 59.6554, 65.3079 changes by changing the brightness by 10 percent. The first figure shows a shift by +10% for each color and the second figure -10%.

Similar to the brightness gradients but the following saturation gradients show a change of the XYZ color 63.2478, 59.6554, 65.3079 by changing the saturation by 10% instead.

63.2478, 59.6554,
65.3079

63.2478, 59.6554,
65.3079

426.1136,
423.3264, 462.2341

46.3011, 43.1409,
47.2579

108.6067,
104.3296, 114.1099

32.6891, 29.9957,
32.8837

137.7497,
133.2582, 145.6990

22.0465, 19.8353,
21.7670

171.6888,
167.0935, 182.6381

14.0079, 12.2754,
13.4891

210.7894,
206.2201, 225.3459

8.2079, 6.9315,
7.6315

255.4168,
251.0223, 274.2408

4.2812, 3.4193,
3.7757

305.9364,

1.8624, 1.3544,

301.8845, 329.7415

1.5031

362.7136,
359.1911, 392.2664

■ 0.5548, 0.1827,
0.2203

■ 0.0000, 0.0000,
0.0000

■ 63.2478, 59.6554,
65.3079

■ 63.2478, 59.6554,
65.3079

■ 56.6238, 49.4351,
53.7641

■ 70.8935, 71.5755,
78.2480

■ 50.9722, 40.8292,
43.5651

■ 79.5970, 85.2599,
92.6260

■ 46.2473, 33.7566,
34.6617

■ 86.9246, 95.8302,
107.6615

■ 42.3978, 28.1265,
27.0001

■ 87.0890, 95.8960,
108.5274

■ 39.3667, 23.8378,
20.5225

■ 37.0905, 20.7767,
15.1660

■ 35.4952, 18.8100,
10.8613

■ 34.4883, 17.7683,
7.5287

■ 34.2454, 17.5425,
6.6460

Harmonies

Analogous

The Analogous color harmony consists of three colors that are next to each other on the color wheel.



62.2773, 59.6554, 74.7509



63.2478, 59.6554, 65.3079



62.4085, 59.6554, 56.6094

Triad

The Triadic color harmony groups three colors that are evenly spaced from another and form a triangle on the color wheel.



63.2478, 59.6554, 65.3079



53.7065, 59.6554, 50.3783



53.5011, 59.6554, 81.6903

Complementary

The Complementary color scheme is a pair of colors which are on the opposite of each other on the color wheel.



63.2478, 59.6554, 65.3079



63.9025, 74.2727, 79.3783

Split Complementary

Split-complementary colors differ from the complementary color scheme. The scheme consists of three colors, the original color and two neighbors of the complement color.



51.3519, 59.6554, 74.0821



63.2478, 59.6554, 65.3079



51.4673, 59.6554, 56.0539

Square

The Square scheme is like the rectangle color scheme, but the four colors are evenly spaced on the color wheel.



63.2478, 59.6554, 65.3079



56.8239, 59.6554, 48.5070



50.6217, 59.6554, 64.6026



56.5776, 59.6554, 84.7542

Rectangle

The Rectangle color scheme consists of four colors that form a rectangle on the color wheel.



63.2478, 59.6554, 65.3079



60.9532, 59.6554, 52.2669



50.6217, 59.6554, 64.6026



52.6507, 59.6554, 79.5454

Sweetspot

The Sweet Spot groups the original color and five complimentary colors.



63.2495, 59.6581, 65.3092



89.6774, 91.5575, 100.0101



63.4411, 59.3333, 84.4534



19.0388, 19.3527, 21.1467



0.0000, 0.0000, 0.0000



20.3446, 21.4041, 23.3091

Same Dimension

The Same Dimension uses a secret algorithm to generate beautiful new colors.



63.2495, 59.6581, 65.3092



75.5377, 69.5276, 76.0302



63.8981, 62.9920, 59.2462



14.5432, 14.4345, 15.7949



19.0580, 9.7574, 3.9343



1.4471, 0.7366, 0.4950

Inverse Universe

The Inverse Universe completely reimagines the original color for something new.



63.2495, 59.6581, 65.3092



75.5377, 69.5276, 76.0302



63.0948, 70.2352, 86.5760



14.5432, 14.4345, 15.7949



19.0580, 9.7574, 3.9343



1.4471, 0.7366, 0.4950

Previews

White Background



This preview shows how the XYZ color 63.2478, 59.6554, 65.3079 looks on a white background.

Color Contrast Check

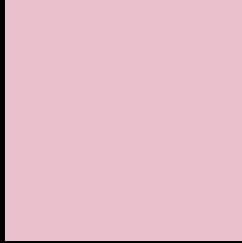
Large Text (above 18pt) WCAG AA × Fail

Any Text WCAG AA × Fail

Large Text (above 18pt) WCAG AAA × Fail

Any Text WCAG AAA × Fail

Black Background



This preview shows how the XYZ color 63.2478, 59.6554, 65.3079 looks on a black background.

Color Contrast Check

Large Text (above 18pt) WCAG AA ✓ Pass

Any Text WCAG AA ✓ Pass

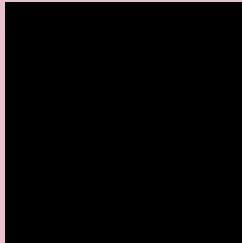
Large Text (above 18pt) WCAG AAA ✓ Pass

Any Text WCAG AAA ✓ Pass

If you want to check with other color combinations, try the [Color Contrast Checker](#).

XYZ 63.2478, 59.6554, 65.3079

Background



This preview shows how black text looks on a background with the XYZ color 63.2478, 59.6554, 65.3079.



This preview shows how white text looks on a background with the XYZ color 63.2478, 59.6554,

Color Blindness Simulation

Color vision deficiency is a very complex topic, and I could not describe the different causes any better than Wikipedia does, so if you want to learn more, you should check out their [article about color blindness](#).

Dichromacy



Original Color

63.2478, 59.6554, 65.3079

Protanopia

57.8060, 59.8236, 68.8220

Deuteranopia

60.8699, 59.7739, 64.8292



Tritanopia

63.3908, 59.3601, 67.1481

Trichromacy



Original Color

63.2478, 59.6554, 65.3079

Protanomaly

59.7102, 59.7989, 67.4268

Deuteranomaly

61.8835, 59.9604, 64.8118

Tritanomaly

63.2689, 59.3113, 66.5061

Monochromacy



Original Color

63.2478, 59.6554, 65.3079

Achromatopsia

58.6655, 61.7207, 67.2138

Achromatomaly

59.9304, 60.6281, 66.3013

CSS Examples

Text

The CSS property to change the color of the text to XYZ 63.2478, 59.6554, 65.3079 is called "color". The color property can be set on classes, ids or directly on the HTML element.

This example shows how text in the color `rgb(232, 193, 204)` looks like.

```
.text, #text, p{  
    color:rgb(232, 193, 204)  
}
```

If you want to add a text shadow in that color use the text-shadow property, you can generate a text shadow directly with our [CSS Text Shadow Generator](#).

Here you see how black text with a 4 pixel rgb(232, 193, 204) colored shadow looks like.

```
.shadow{ text-shadow: 4px 4px 2px rgb(232, 193, 204) }
```

Border

The CSS property to change the border of an element to XYZ 63.2478, 59.6554, 65.3079 is called "border". The border property can be set on classes, ids or directly on the HTML element.

This example shows the color as border, it can be applied via the CSS property "border" or "border-color".

```
.border, #border, table{ border:4px solid rgb(232, 193, 204) }
```


If only the border color should be changed use the property border-color.

```
.border{ border-color:rgb(232, 193, 204) }
```

If you want to add a box shadow in that color use:

Here you see how a box with a 4 pixel rgb(232, 193, 204) colored shadow looks like.

```
.boxshadow{ -moz-box-shadow:4px 4px 4px  
4px rgb(232, 193, 204); -webkit-box-  
shadow:4px 4px 4px 4px rgb(232, 193, 204);  
box-shadow:4px 4px 4px 4px rgb(232, 193,  
204) }
```

Background

The CSS property to change the background color of an element to XYZ 63.2478, 59.6554, 65.3079 is called "background". The background property can be set on classes, ids or directly on the HTML element.

```
.background, #background, body{  
background: rgb(232, 193, 204) }
```

If only the background color should be changed can be used:

```
.background{ background-color: rgb(232,  
193, 204) }
```

This example shows the color as background, it is applied via the CSS property "background".

To optimize and compress your CSS code, you can use our [online CSS compressor and optimizer](#) based on csstidy. If you want to create a linear or radial gradient as background or border, check our [CSS Gradient Generator](#).

Hey! You found this booklet interesting? Support Converting Colors with the new Membership Option!

The pro membership hides all ads, plus gives you double the colors in the color bucket, and more awesome pro features!

[Learn more, Memberships starting at \\$2.50/m!](#)

**Follow me
on Twitter!**

@ConvertingColor