

Converting Colors

XYZ(63.2620, 64.0657, 64.4940)

Have a look what the booklet for
XYZ(63.2620, 64.0657, 64.4940)
contains.

XYZ(63.3544, 64.2070, 64.3124)	3
<i>Conversions</i>	4
<i>Details</i>	6
<i>Harmonies</i>	12
<i>Previews</i>	24
<i>Color Blindness Simulation</i>	28
<i>CSS Examples</i>	31

Color

**XYZ(63.3544, 64.2070,
64.3124)**

Conversions

Conversions Part 1

Format	Color
Hex	E0CEC9
RGB	224, 206, 201
RGB Percent	88%, 81%, 79%
CMY	0.1216, 0.1921, 0.2118
CMYK	0.00, 0.08, 0.10, 0.12
HSL	13°, 27%, 83%
HSV	13°, 10%, 88%
XYZ	63.3544, 64.2070, 64.3124
YIQ	210.8120, 12.3330, 2.2610

Conversions

Conversions Part 2

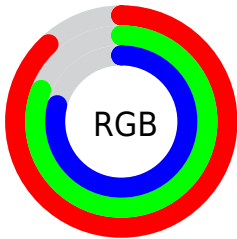
Format	Color
R_{YB}	224, 207, 201
Decimal	14733001
CIE Lab	84.07, 5.42, 4.73
CIE LCh	84, 7.193, 41.158
Yxy	64.2070, 0.3302, 0.3346
Android (android.graphics.Color)	4292923081 (0xFFE0CEC9)
YUV	210.8120, -4.8373, 11.5659
Hunter-Lab	80.1293, 0.9052, 8.5039

Details

The XYZ color **63.3544, 64.2070, 64.3124** is a light color, and the websafe version is hex **CCCCCC**. A complement of this color would be **62.8732, 68.4610, 80.4222**, and the grayscale version is **61.8195, 65.0390, 70.8274**.

A 20% lighter version of the original color is **95.0500, 100.0000, 108.9000**, and **32.8569, 32.9981, 32.2413** is the 20% darker color. If you saturate the color by 10%, you get **56.9229, 55.2575, 50.1024**, and if you desaturate by 10%, it is **70.6443, 74.2569, 80.7059**.

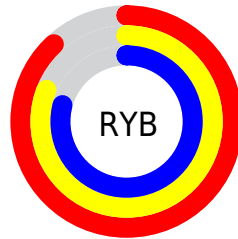
Distribution



Red (88%)

Green (81%)

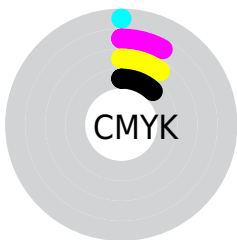
Blue (79%)



Red (88%)

Yellow (81%)

Blue (79%)

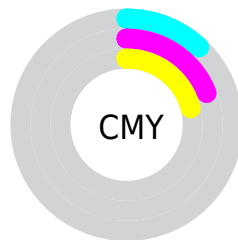


Cyan (0%)

Magenta (8%)

Yellow (10%)

Black (12%)



Cyan (12%)

Magenta (19%)

Yellow (21%)

Brightness & Saturation Gradients

These gradients show how the XYZ color 63.3544, 64.2070, 64.3124 changes by changing the brightness by 10 percent. The first figure shows a shift by +10% for each color and the second figure -10%.

Similar to the brightness gradients but the following saturation gradients show a change of the XYZ color 63.3544, 64.2070, 64.3124 by changing the saturation by 10% instead.

63.3544, 64.2070,
64.3124

63.3544, 64.2070,
64.3124

426.4938,
439.9368, 458.5553

46.3877, 46.8184,
46.4559

108.7596,
110.9090, 112.6645

32.7578, 32.8921,
32.2545

137.9288,
140.9911, 143.9973

22.0993, 22.0438,
21.2895

171.8962,
176.0732, 180.6592

14.0469, 13.8891,
13.1425

211.0272,
216.5397, 223.0688

8.2352, 8.0436,
7.3949

255.6870,
262.7748, 271.6447

4.2989, 4.1228,
3.6281

306.2412,

1.8726, 1.7425,

315.1632, 326.8054

1.4236

363.0550,
374.0890, 388.9694

■ 0.5608, 0.4510,
0.1600

■ 0.0000, 0.0000,
0.0000

■ 63.3544, 64.2070,
64.3124

■ 63.3544, 64.2070,
64.3124

■ 56.9229, 55.2575,
50.1024

■ 70.6443, 74.2569,
80.7059

■ 51.3125, 47.3625,
37.9794

■ 78.8175, 85.4343,
99.3656

■ 46.4911, 40.4853,
27.8457

■ 84.5508, 94.5874,
108.4086

■ 42.4222, 34.5841,
19.5945

■ 39.0664, 29.6137,
13.1084

■ 36.3808, 25.5255,
8.2571

■ 34.3170, 22.2664,
4.8919

■ 32.8198, 19.7770,
2.8366

■ 31.8281, 18.0221,
1.8011

Harmonies

Analogous

The Analogous color harmony consists of three colors that are next to each other on the color wheel.



64.0714, 64.2070, 68.2320



63.3544, 64.2070, 64.3124



62.0181, 64.2070, 61.9576

Triad

The Triadic color harmony groups three colors that are evenly spaced from another and form a triangle on the color wheel.



63.3544, 64.2070, 64.3124



58.1828, 64.2070, 67.1246



61.6196, 64.2070, 78.8445

Complementary

The Complementary color scheme is a pair of colors which are on the opposite of each other on the color wheel.



63.3544, 64.2070, 64.3124



62.8732, 68.4610, 80.4222

Split Complementary

Split-complementary colors differ from the complementary color scheme. The scheme consists of three colors, the original color and two neighbors of the complement color.



60.0462, 64.2070, 78.5164



63.3544, 64.2070, 64.3124



58.0803, 64.2070, 71.6163

Square

The Square scheme is like the rectangle color scheme, but the four colors are evenly spaced on the color wheel.



63.3544, 64.2070, 64.3124



59.0395, 64.2070, 63.5320



58.7570, 64.2070, 75.8244



63.0583, 64.2070, 76.7023

Rectangle

The Rectangle color scheme consists of four colors that form a rectangle on the color wheel.



63.3544, 64.2070, 64.3124



60.9651, 64.2070, 61.5280



58.7570, 64.2070, 75.8244



61.0886, 64.2070, 79.0218

Sweetspot

The Sweet Spot groups the original color and five complimentary colors.



63.3562, 64.2098, 64.3138



91.9627, 95.7573, 101.9152



64.4163, 62.7368, 75.7444



19.5111, 20.2583, 21.4245



0.0000, 0.0000, 0.0000



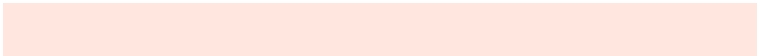
20.3446, 21.4041, 23.3091

Same Dimension

The Same Dimension uses a secret algorithm to generate beautiful new colors.



63.3562, 64.2098, 64.3138



83.3409, 83.8477, 82.5974



66.2214, 69.9404, 65.2689



13.9478, 14.1816, 14.3090



18.5953, 10.6286, 1.0714



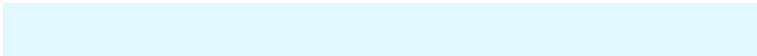
1.3547, 0.8683, 0.0962

Inverse Universe

The Inverse Universe completely reimagines the original color for something new.



62.8732, 68.4610, 80.4222



82.5873, 90.4768, 107.7187



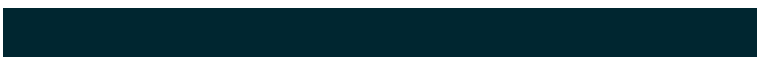
59.9810, 62.6766, 79.4581



13.8503, 15.0397, 17.5607



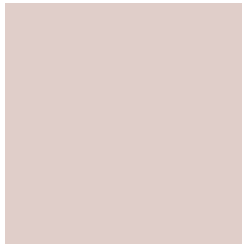
16.8725, 21.2145, 44.2539



1.2330, 1.5975, 3.0886

Previews

White Background



This preview shows how the XYZ color 63.3544, 64.2070, 64.3124 looks on a white background.

Color Contrast Check

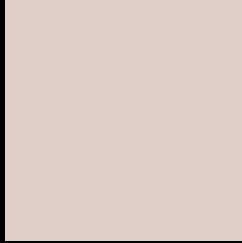
Large Text (above 18pt) WCAG AA × Fail

Any Text WCAG AA × Fail

Large Text (above 18pt) WCAG AAA × Fail

Any Text WCAG AAA × Fail

Black Background



This preview shows how the XYZ color 63.3544, 64.2070, 64.3124 looks on a black background.

Color Contrast Check

Large Text (above 18pt) WCAG AA ✓ Pass

Any Text WCAG AA ✓ Pass

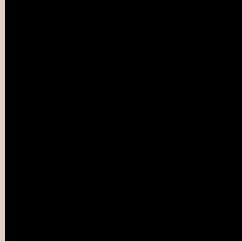
Large Text (above 18pt) WCAG AAA ✓ Pass

Any Text WCAG AAA ✓ Pass

If you want to check with other color combinations, try the [Color Contrast Checker](#).

XYZ 63.3544, 64.2070, 64.3124

Background



This preview shows how black text looks on a background with the XYZ color 63.3544, 64.2070, 64.3124.



This preview shows how white text looks on a background with the XYZ color 63.3544, 64.2070,

Color Blindness Simulation

Color vision deficiency is a very complex topic, and I could not describe the different causes any better than Wikipedia does, so if you want to learn more, you should check out their [article about color blindness](#).

Dichromacy



Original Color

63.3544, 64.2070, 64.3124

Protanopia

61.6043, 64.3598, 65.6757

Deuteranopia

65.6209, 64.2998, 64.8296



Tritanopia

65.8207, 64.1572, 75.9323

Trichromacy



Original Color

63.3544, 64.2070, 64.3124

Protanomaly

62.1300, 64.2814, 65.0101

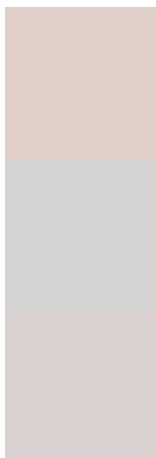
Deuteranomaly

64.8867, 64.2730, 64.8631

Tritanomaly

64.8406, 64.1079, 71.2440

Monochromacy



Original Color

63.3544, 64.2070, 64.3124

Achromatopsia

61.9161, 65.1406, 70.9381

Achromatomaly

62.3819, 64.7049, 68.2329

CSS Examples

Text

The CSS property to change the color of the text to XYZ 63.3544, 64.2070, 64.3124 is called "color". The color property can be set on classes, ids or directly on the HTML element.

This example shows how text in the color `rgb(224, 206, 201)` looks like.

```
.text, #text, p{  
    color:rgb(224, 206, 201)  
}
```

If you want to add a text shadow in that color use the text-shadow property, you can generate a text shadow directly with our [CSS Text Shadow Generator](#).

Here you see how black text with a 4 pixel rgb(224, 206, 201) colored shadow looks like.

```
.shadow{ text-shadow: 4px 4px 2px rgb(224, 206, 201) }
```

Border

The CSS property to change the border of an element to XYZ 63.3544, 64.2070, 64.3124 is called "border". The border property can be set on classes, ids or directly on the HTML element.

This example shows the color as border, it can be applied via the CSS property "border" or "border-color".

```
.border, #border, table{ border:4px solid rgb(224, 206, 201) }
```


If only the border color should be changed use the property border-color.

```
.border{ border-color:rgb(224, 206, 201) }
```

If you want to add a box shadow in that color use:

Here you see how a box with a 4 pixel rgb(224, 206, 201) colored shadow looks like.

```
.boxshadow{ -moz-box-shadow:4px 4px 4px  
4px rgb(224, 206, 201); -webkit-box-  
shadow:4px 4px 4px 4px rgb(224, 206, 201);  
box-shadow:4px 4px 4px 4px rgb(224, 206,  
201) }
```

Background

The CSS property to change the background color of an element to XYZ 63.3544, 64.2070, 64.3124 is called "background". The background property can be set on classes, ids or directly on the HTML element.

```
.background, #background, body{  
background: rgb(224, 206, 201) }
```

If only the background color should be changed can be used:

```
.background{ background-color: rgb(224,  
206, 201) }
```

This example shows the color as background, it is applied via the CSS property "background".

To optimize and compress your CSS code, you can use our [online CSS compressor and optimizer](#) based on csstidy. If you want to create a linear or radial gradient as background or border, check our [CSS Gradient Generator](#).

Hey! You found this booklet interesting? Support Converting Colors with the new Membership Option!

The pro membership hides all ads, plus gives you double the colors in the color bucket, and more awesome pro features!

[Learn more, Memberships starting at \\$2.50/m!](#)

**Follow me
on Twitter!**

@ConvertingColor