

Converting Colors

XYZ(63.3395, 61.2337, 68.8017)

Have a look what the booklet for
XYZ(63.3395, 61.2337, 68.8017)
contains.

XYZ(63.3813, 61.3225, 68.8175)	3
<i>Conversions</i>	4
<i>Details</i>	6
<i>Harmonies</i>	12
<i>Previews</i>	24
<i>Color Blindness Simulation</i>	28
<i>CSS Examples</i>	31

Color

**XYZ(63.3813, 61.3225,
68.8175)**

Conversions

Conversions Part 1

Format	Color
Hex	E3C6D1
RGB	227, 198, 209
RGB Percent	89%, 78%, 82%
CMY	0.1098, 0.2235, 0.1804
CMYK	0.00, 0.13, 0.08, 0.11
HSL	337°, 34%, 83%
HSV	337°, 13%, 89%
XYZ	63.3813, 61.3225, 68.8175
YIQ	207.9250, 13.7530, 9.5690

Conversions

Conversions Part 2

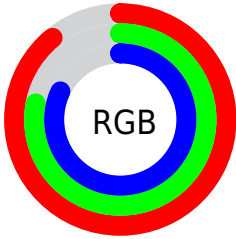
Format	Color
R _Y B	227, 198, 209
Decimal	14927569
CIE Lab	82.55, 12.04, -1.72
CIE LCh	83, 12.158, 351.869
Yxy	61.3225, 0.3275, 0.3169
Android (android.graphics.Color)	4293117649 (0xFFE3C6D1)
YUV	207.9250, 0.5300, 16.7288
Hunter-Lab	78.3087, 7.4337, 2.7122

Details

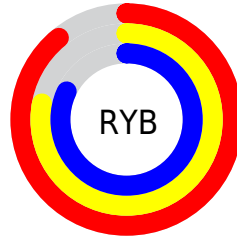
The XYZ color **63.3813, 61.3225, 68.8175** is a light color, and the websafe version is hex **FFCCCC**. A complement of this color would be **63.1549, 71.9035, 75.5194**, and the grayscale version is **59.8975, 63.0169, 68.6254**.

A 20% lighter version of the original color is **95.0500, 100.0000, 108.9000**, and **32.6842, 30.9710, 35.2657** is the 20% darker color. If you saturate the color by 10%, you get **56.9085, 51.0460, 58.4298**, and if you desaturate by 10%, it is **70.7895, 73.2213, 80.2799**.

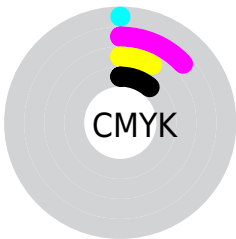
Distribution



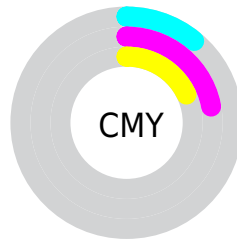
- Red (89%)
- Green (78%)
- Blue (82%)



- Red (89%)
- Yellow (78%)
- Blue (82%)



- Cyan (0%)
- Magenta (13%)
- Yellow (8%)
- Black (11%)



- Cyan (11%)
- Magenta (22%)
- Yellow (18%)

Brightness & Saturation Gradients

These gradients show how the XYZ color 63.3813, 61.3225, 68.8175 changes by changing the brightness by 10 percent. The first figure shows a shift by +10% for each color and the second figure -10%.

Similar to the brightness gradients but the following saturation gradients show a change of the XYZ color 63.3813, 61.3225, 68.8175 by changing the saturation by 10% instead.

63.3813, 61.3225,
68.8175

63.3813, 61.3225,
68.8175

426.5897,
429.4555, 475.0635

46.4096, 44.4855,
50.0923

108.7982,
106.7458, 119.1861

32.7751, 31.0524,
35.1150

137.9740,
136.1008, 151.6666

22.1126, 20.6387,
23.4672

171.9485,
170.3973, 189.5692

14.0568, 12.8602,
14.7303

211.0871,
210.0196, 233.3125

8.2421, 7.3323,
8.4858

255.7552,
255.3522, 283.3151

4.3034, 3.6708,
4.3152

306.3181,

1.8752, 1.4912,

306.7795, 339.9954

1.7998

363.1411,
364.6858, 403.7720

■ 0.5623, 0.2825,
0.4278

■ 0.0000, 0.0000,
0.0000

■ 63.3813, 61.3225,
68.8175

■ 63.3813, 61.3225,
68.8175

■ 56.9085, 51.0460,
58.4298

■ 70.7895, 73.2213,
80.2799

■ 51.3275, 42.3132,
49.0803

■ 79.1641, 86.8005,
92.8440

■ 46.5987, 35.0510,
40.7364

■ 84.8951, 94.8336,
105.3255

■ 42.6777, 29.1771,
33.3616

■ 85.4890, 95.0711,
108.4526

■ 39.5155, 24.6011,
26.9174

■ 37.0577, 21.2218,
21.3620

■ 35.2420, 18.9227,
16.6499

■ 33.9940, 17.5633,
12.7297

■ 33.3621, 17.0044,
10.3459

Harmonies

Analogous

The Analogous color harmony consists of three colors that are next to each other on the color wheel.



62.3112, 61.3225, 76.0166



63.3813, 61.3225, 68.8175



63.0542, 61.3225, 61.5719

Triad

The Triadic color harmony groups three colors that are evenly spaced from another and form a triangle on the color wheel.



63.3813, 61.3225, 68.8175



56.4408, 61.3225, 54.3319



55.2493, 61.3225, 78.6908

Complementary

The Complementary color scheme is a pair of colors which are on the opposite of each other on the color wheel.



63.3813, 61.3225, 68.8175



63.1549, 71.9035, 75.5194

Split Complementary

Split-complementary colors differ from the complementary color scheme. The scheme consists of three colors, the original color and two neighbors of the complement color.



53.7629, 61.3225, 72.2523



63.3813, 61.3225, 68.8175



54.4364, 61.3225, 58.3050

Square

The Square scheme is like the rectangle color scheme, but the four colors are evenly spaced on the color wheel.



63.3813, 61.3225, 68.8175



58.9959, 61.3225, 53.5621



53.4699, 61.3225, 64.7631



57.5802, 61.3225, 81.9876

Rectangle

The Rectangle color scheme consists of four colors that form a rectangle on the color wheel.



63.3813, 61.3225, 68.8175



62.0920, 61.3225, 57.6530



53.4699, 61.3225, 64.7631



54.6372, 61.3225, 76.8003

Sweetspot

The Sweet Spot groups the original color and five complimentary colors.



63.3830, 61.3252, 68.8188



90.8791, 93.2627, 102.5630



62.3459, 60.5183, 81.0692



19.2889, 19.6993, 21.7032



0.0000, 0.0000, 0.0000



20.3446, 21.4041, 23.3091

Same Dimension

The Same Dimension uses a secret algorithm to generate beautiful new colors.



63.3830, 61.3252, 68.8188



80.4484, 76.5409, 86.3244



62.8499, 62.3631, 62.1540



14.6020, 14.4580, 16.1045



19.5091, 9.9378, 6.3097



1.4857, 0.7520, 0.6983

Inverse Universe

The Inverse Universe completely reimagines the original color for something new.



63.3830, 61.3252, 68.8188



80.4484, 76.5409, 86.3244



63.7086, 70.6590, 82.9547



14.6020, 14.4580, 16.1045



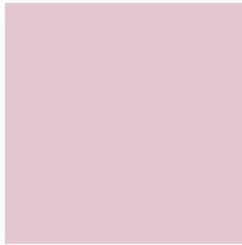
19.5091, 9.9378, 6.3097



1.4857, 0.7520, 0.6983

Previews

White Background



This preview shows how the XYZ color 63.3813, 61.3225, 68.8175 looks on a white background.

Color Contrast Check

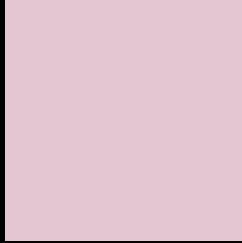
Large Text (above 18pt) WCAG AA × Fail

Any Text WCAG AA × Fail

Large Text (above 18pt) WCAG AAA × Fail

Any Text WCAG AAA × Fail

Black Background



This preview shows how the XYZ color 63.3813, 61.3225, 68.8175 looks on a black background.

Color Contrast Check

Large Text (above 18pt) WCAG AA ✓ Pass

Any Text WCAG AA ✓ Pass

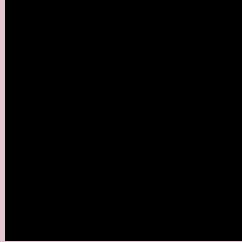
Large Text (above 18pt) WCAG AAA ✓ Pass

Any Text WCAG AAA ✓ Pass

If you want to check with other color combinations, try the [Color Contrast Checker](#).

XYZ 63.3813, 61.3225, 68.8175

Background



This preview shows how black text looks on a background with the XYZ color 63.3813, 61.3225, 68.8175.



This preview shows how white text looks on a background with the XYZ color 63.3813, 61.3225,

68.8175.

Color Blindness Simulation

Color vision deficiency is a very complex topic, and I could not describe the different causes any better than Wikipedia does, so if you want to learn more, you should check out their [article about color blindness](#).

Dichromacy



Original Color

63.3813, 61.3225, 68.8175

Protanopia

59.3352, 61.2552, 71.6469

Deuteranopia

62.6725, 61.2976, 68.8500



Tritanopia

63.9714, 61.2306, 71.3978

Trichromacy



Original Color

63.3813, 61.3225, 68.8175

Protanomaly

60.7358, 61.2907, 70.9165

Deuteranomaly

62.9834, 61.4578, 68.8646

Tritanomaly

63.8448, 61.1800, 70.7313

Monochromacy



Original Color

63.3813, 61.3225, 68.8175

Achromatopsia

59.9535, 63.0757, 68.6895

Achromatomaly

61.0024, 62.1869, 68.4626

CSS Examples

Text

The CSS property to change the color of the text to XYZ 63.3813, 61.3225, 68.8175 is called "color". The color property can be set on classes, ids or directly on the HTML element.

This example shows how text in the color `rgb(227, 198, 209)` looks like.

```
.text, #text, p{  
    color:rgb(227, 198, 209)  
}
```

If you want to add a text shadow in that color use the text-shadow property, you can generate a text shadow directly with our [CSS Text Shadow Generator](#).

Here you see how black text with a 4 pixel rgb(227, 198, 209) colored shadow looks like.

```
.shadow{ text-shadow: 4px 4px 2px rgb(227, 198, 209) }
```

Border

The CSS property to change the border of an element to XYZ 63.3813, 61.3225, 68.8175 is called "border". The border property can be set on classes, ids or directly on the HTML element.

This example shows the color as border, it can be applied via the CSS property "border" or "border-color".

```
.border, #border, table{ border:4px solid rgb(227, 198, 209) }
```


If only the border color should be changed use the property `border-color`.

```
.border{ border-color:rgb(227, 198, 209) }
```

If you want to add a box shadow in that color use:

Here you see how a box with a 4 pixel `rgb(227, 198, 209)` colored shadow looks like.

```
.boxshadow{ -moz-box-shadow:4px 4px 4px 4px rgb(227, 198, 209); -webkit-box-shadow:4px 4px 4px 4px rgb(227, 198, 209); box-shadow:4px 4px 4px 4px rgb(227, 198, 209) }
```

Background

The CSS property to change the background color of an element to XYZ 63.3813, 61.3225, 68.8175 is called "background". The background property can be set on classes, ids or directly on the HTML element.

```
.background, #background, body{  
background: rgb(227, 198, 209) }
```

If only the background color should be changed can be used:

```
.background{ background-color: rgb(227,  
198, 209) }
```

This example shows the color as background, it is applied via the CSS property "background".

To optimize and compress your CSS code, you can use our [online CSS compressor and optimizer](#) based on csstidy. If you want to create a linear or radial gradient as background or border, check our [CSS Gradient Generator](#).

Hey! You found this booklet interesting? Support Converting Colors with the new Membership Option!

The pro membership hides all ads, plus gives you double the colors in the color bucket, and more awesome pro features!

[Learn more, Memberships starting at \\$2.50/m!](#)

**Follow me
on Twitter!**

@ConvertingColor