

Converting Colors

XYZ(63.3696, 62.6918, 69.0824)

Have a look what the booklet for
XYZ(63.3696, 62.6918, 69.0824)
contains.

| | |
|--|----|
| XYZ(63.3696, 62.6918, 69.0824) | 3 |
| <i>Conversions</i> | 4 |
| <i>Details</i> | 6 |
| <i>Harmonies</i> | 12 |
| <i>Previews</i> | 24 |
| <i>Color Blindness Simulation</i> | 28 |
| <i>CSS Examples</i> | 31 |

Color

**XYZ(63.3696, 62.6918,
69.0824)**

Conversions

Conversions Part 1

| Format | Color |
|-------------|---------------------------|
| Hex | E0CAD1 |
| RGB | 224, 202, 209 |
| RGB Percent | 88%, 79%, 82% |
| CMY | 0.1216, 0.2078, 0.1804 |
| CMYK | 0.00, 0.10, 0.07, 0.12 |
| HSL | 341°, 26%, 84% |
| HSV | 341°, 10%, 88% |
| XYZ | 63.3696, 62.6918, 69.0824 |
| YIQ | 209.3760, 10.8650, 6.8410 |

Conversions

Conversions Part 2

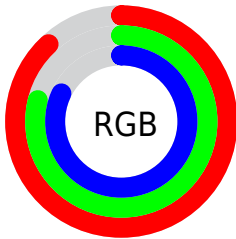
| Format | Color |
|-------------------------------------|-------------------------------|
| R _{YB} | 224, 202, 209 |
| Decimal | 14731985 |
| CIE Lab | 83.28, 8.87, -0.68 |
| CIE LCh | 83, 8.897, 355.590 |
| Yxy | 62.6918, 0.3247, 0.3213 |
| Android (android.graphics.Color) | 4292922065 (0xFFE0CAD1) |
| YUV | 209.3760, -0.1854, 12.8252 |
| Hunter-Lab | 79.1782, 4.2993, 3.6946 |

Details

The XYZ color **63.3696, 62.6918, 69.0824** is a light color, and the websafe version is hex **CCCCCC**. A complement of this color would be **63.5395, 70.8792, 75.9812**, and the grayscale version is **60.8475, 64.0163, 69.7138**.

A 20% lighter version of the original color is **95.0500, 100.0000, 108.9000**, and **32.8685, 31.9814, 35.4510** is the 20% darker color. If you saturate the color by 10%, you get **56.6893, 52.2136, 57.9681**, and if you desaturate by 10%, it is **70.9977, 74.7738, 81.4088**.

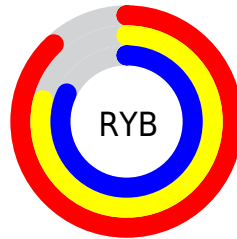
Distribution



Red (88%)

Green (79%)

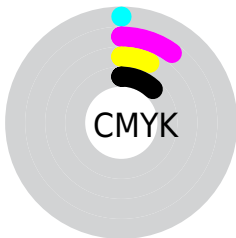
Blue (82%)



Red (88%)

Yellow (79%)

Blue (82%)

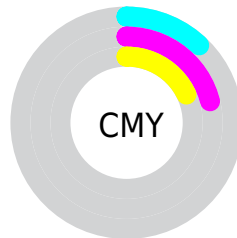


Cyan (0%)

Magenta (10%)

Yellow (7%)

Black (12%)



Cyan (12%)

Magenta (21%)

Yellow (18%)

Brightness & Saturation Gradients

These gradients show how the XYZ color 63.3696, 62.6918, 69.0824 changes by changing the brightness by 10 percent. The first figure shows a shift by +10% for each color and the second figure -10%.

Similar to the brightness gradients but the following saturation gradients show a change of the XYZ color 63.3696, 62.6918, 69.0824 by changing the saturation by 10% instead.

63.3696, 62.6918,
69.0824

63.3696, 62.6918,
69.0824

426.5480,
434.4501, 476.0233

46.4000, 45.5919,
50.3066

108.7814,
108.7248, 119.5681

32.7676, 31.9239,
35.2842

137.9543,
138.4266, 152.1151

22.1068, 21.3034,
23.5966

171.9258,
173.0979, 190.0896

14.0525, 13.3460,
14.8252

211.0611,
213.1231, 233.9101

8.2391, 7.6672,
8.5516

255.7256,
258.8865, 283.9952

4.3014, 3.8827,
4.3571

306.2847,

1.8740, 1.6082,

310.7725, 340.7634

1.8232

363.1037,
369.1656, 404.6333

■ 0.5617, 0.3631,
0.4432

■ 0.0000, 0.0000,
0.0000

■ 63.3696, 62.6918,
69.0824

■ 63.3696, 62.6918,
69.0824

■ 56.6893, 52.2136,
57.9681

■ 70.9977, 74.7738,
81.4088

■ 50.9137, 43.2634,
48.0243

■ 79.6038, 88.5148,
94.9793

■ 46.0042, 35.7717,
39.2126

■ 84.5231, 94.5764,
108.2626

■ 41.9171, 29.6603,
31.4911

■ 84.5508, 94.5875,
108.4086

■ 38.6051, 24.8437,
24.8151

■ 36.0155, 21.2266,
19.1363

■ 34.0889, 18.7007,
14.4024

■ 32.7554, 17.1373,
10.5551

■ 31.8994, 16.3179,
7.5180

Harmonies

Analogous

The Analogous color harmony consists of three colors that are next to each other on the color wheel.



62.7058, 62.6918, 74.4541



63.3696, 62.6918, 69.0824



63.0019, 62.6918, 63.7657

Triad

The Triadic color harmony groups three colors that are evenly spaced from another and form a triangle on the color wheel.



63.3696, 62.6918, 69.0824



57.9957, 62.6918, 59.1038



57.5110, 62.6918, 77.4242

Complementary

The Complementary color scheme is a pair of colors which are on the opposite of each other on the color wheel.



63.3696, 62.6918, 69.0824



63.5395, 70.8792, 75.9812

Split Complementary

Split-complementary colors differ from the complementary color scheme. The scheme consists of three colors, the original color and two neighbors of the complement color.



56.2971, 62.6918, 72.9622



63.3696, 62.6918, 69.0824



56.5727, 62.6918, 62.4206

Square

The Square scheme is like the rectangle color scheme, but the four colors are evenly spaced on the color wheel.



63.3696, 62.6918, 69.0824



59.8729, 62.6918, 58.1887



55.9574, 62.6918, 67.4456



59.3014, 62.6918, 79.4327

Rectangle

The Rectangle color scheme consists of four colors that form a rectangle on the color wheel.



63.3696, 62.6918, 69.0824



62.2255, 62.6918, 60.9360



55.9574, 62.6918, 67.4456



57.0235, 62.6918, 76.1501

Sweetspot

The Sweet Spot groups the original color and five complimentary colors.



63.3714, 62.6945, 69.0837



91.8292, 94.8843, 103.7389



63.0935, 62.3265, 79.2266



19.4753, 20.0238, 21.9146



0.0000, 0.0000, 0.0000



20.3446, 21.4041, 23.3091

Same Dimension

The Same Dimension uses a secret algorithm to generate beautiful new colors.



63.3714, 62.6945, 69.0837



82.8737, 80.7347, 89.1574



63.3944, 64.0965, 64.9111



13.8860, 13.7720, 15.1697



18.6061, 9.5094, 4.5916



1.3294, 0.6750, 0.5276

Inverse Universe

The Inverse Universe completely reimagines the original color for something new.



63.3714, 62.6945, 69.0837



82.8737, 80.7347, 89.1574



63.4945, 69.3017, 80.5518



13.8860, 13.7720, 15.1697



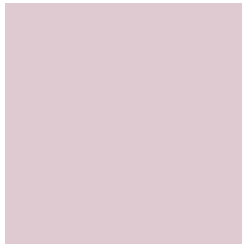
18.6061, 9.5094, 4.5916



1.3294, 0.6750, 0.5276

Previews

White Background



This preview shows how the XYZ color 63.3696, 62.6918, 69.0824 looks on a white background.

Color Contrast Check

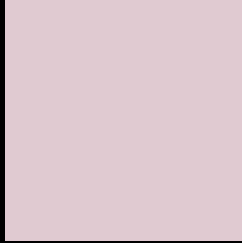
Large Text (above 18pt) WCAG AA × Fail

Any Text WCAG AA × Fail

Large Text (above 18pt) WCAG AAA × Fail

Any Text WCAG AAA × Fail

Black Background



This preview shows how the XYZ color 63.3696, 62.6918, 69.0824 looks on a black background.

Color Contrast Check

Large Text (above 18pt) WCAG AA ✓ Pass

Any Text WCAG AA ✓ Pass

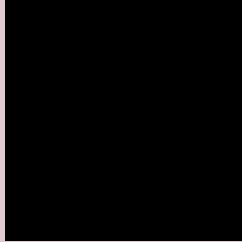
Large Text (above 18pt) WCAG AAA ✓ Pass

Any Text WCAG AAA ✓ Pass

If you want to check with other color combinations, try the [Color Contrast Checker](#).

XYZ 63.3696, 62.6918, 69.0824

Background



This preview shows how black text looks on a background with the XYZ color 63.3696, 62.6918, 69.0824.



This preview shows how white text looks on a background with the XYZ color 63.3696, 62.6918,

Color Blindness Simulation

Color vision deficiency is a very complex topic, and I could not describe the different causes any better than Wikipedia does, so if you want to learn more, you should check out their [article about color blindness](#).

Dichromacy



Original Color

63.3696, 62.6918, 69.0824

Protanopia

60.5333, 62.5977, 71.1795

Deuteranopia

64.0738, 62.7076, 69.0483



Tritanopia

64.4624, 62.7906, 74.3679

Trichromacy



Original Color

63.3696, 62.6918, 69.0824

Protanomaly

61.6135, 62.8129, 70.5047

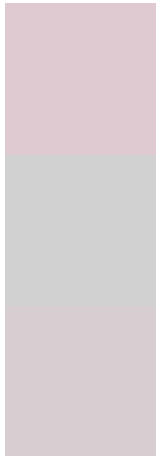
Deuteranomaly

63.7593, 62.5455, 69.0336

Tritanomaly

64.0756, 62.6359, 72.3311

Monochromacy



Original Color

63.3696, 62.6918, 69.0824

Achromatopsia

60.6036, 63.7597, 69.4343

Achromatomaly

61.3115, 63.0422, 69.2585

CSS Examples

Text

The CSS property to change the color of the text to XYZ 63.3696, 62.6918, 69.0824 is called "color". The color property can be set on classes, ids or directly on the HTML element.

This example shows how text in the color rgb(224, 202, 209) looks like.

```
.text, #text, p{  
    color:rgb(224, 202, 209)  
}
```

If you want to add a text shadow in that color use the text-shadow property, you can generate a text shadow directly with our [CSS Text Shadow Generator](#).

Here you see how black text with a 4 pixel rgb(224, 202, 209) colored shadow looks like.

```
.shadow{ text-shadow: 4px 4px 2px rgb(224, 202, 209) }
```

Border

The CSS property to change the border of an element to XYZ 63.3696, 62.6918, 69.0824 is called "border". The border property can be set on classes, ids or directly on the HTML element.

This example shows the color as border, it can be applied via the CSS property "border" or "border-color".

```
.border, #border, table{ border:4px solid rgb(224, 202, 209) }
```


If only the border color should be changed use the property `border-color`.

```
.border{ border-color:rgb(224, 202, 209) }
```

If you want to add a box shadow in that color use:

Here you see how a box with a 4 pixel `rgb(224, 202, 209)` colored shadow looks like.

```
.boxshadow{ -moz-box-shadow:4px 4px 4px  
4px rgb(224, 202, 209); -webkit-box-  
shadow:4px 4px 4px 4px rgb(224, 202, 209);  
box-shadow:4px 4px 4px 4px rgb(224, 202,  
209) }
```

Background

The CSS property to change the background color of an element to XYZ 63.3696, 62.6918, 69.0824 is called "background". The background property can be set on classes, ids or directly on the HTML element.

```
.background, #background, body{  
background: rgb(224, 202, 209) }
```

If only the background color should be changed can be used:

```
.background{ background-color: rgb(224,  
202, 209) }
```

This example shows the color as background, it is applied via the CSS property "background".

To optimize and compress your CSS code, you can use our [online CSS compressor and optimizer](#) based on csstidy. If you want to create a linear or radial gradient as background or border, check our [CSS Gradient Generator](#).

Hey! You found this booklet interesting? Support Converting Colors with the new Membership Option!

The pro membership hides all ads, plus gives you double the colors in the color bucket, and more awesome pro features!

[Learn more, Memberships starting at \\$2.50/m!](#)

**Follow me
on Twitter!**

@ConvertingColor