

Converting Colors

XYZ(63.3860, 61.8852, 60.9470)

Have a look what the booklet for
XYZ(63.3860, 61.8852, 60.9470)
contains.

XYZ(63.3422, 61.8213, 60.8188)	3
<i>Conversions</i>	4
<i>Details</i>	6
<i>Harmonies</i>	12
<i>Previews</i>	24
<i>Color Blindness Simulation</i>	28
<i>CSS Examples</i>	31

Color

**XYZ(63.3422, 61.8213,
60.8188)**

Conversions

Conversions Part 1

Format	Color
Hex	E7C7C4
RGB	231, 199, 196
RGB Percent	91%, 78%, 77%
CMY	0.0941, 0.2196, 0.2314
CMYK	0.00, 0.14, 0.15, 0.09
HSL	5°, 42%, 84%
HSV	5°, 15%, 91%
XYZ	63.3422, 61.8213, 60.8188
YIQ	208.2260, 20.0350, 5.8510

Conversions

Conversions Part 2

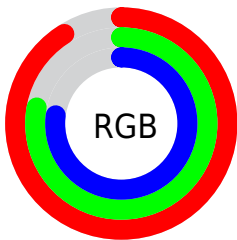
Format	Color
R _Y B	231, 199, 196
Decimal	15189956
CIE Lab	82.82, 10.80, 5.67
CIE LCh	83, 12.194, 27.685
Yxy	61.8213, 0.3406, 0.3324
Android (android.graphics.Color)	4293380036 (0xFFE7C7C4)
YUV	208.2260, -6.0274, 19.9728
Hunter-Lab	78.6265, 6.2047, 9.1769

Details

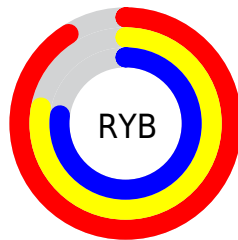
The XYZ color **63.3422, 61.8213, 60.8188** is a light color, and the websafe version is hex **FFCCCC**. A complement of this color would be **64.9317, 72.9904, 86.2681**, and the grayscale version is **60.1310, 63.2625, 68.8928**.

A 20% lighter version of the original color is **94.7296, 99.8718, 107.2129**, and **32.6871, 31.3178, 29.9133** is the 20% darker color. If you saturate the color by 10%, you get **56.3867, 51.7987, 46.5114**, and if you desaturate by 10%, it is **71.3802, 73.3598, 77.4857**.

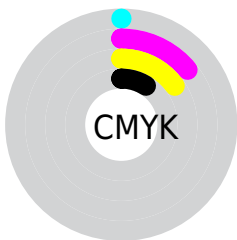
Distribution



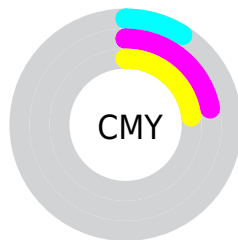
- Red (91%)
- Green (78%)
- Blue (77%)



- Red (91%)
- Yellow (78%)
- Blue (77%)



- Cyan (0%)
- Magenta (14%)
- Yellow (15%)
- Black (9%)



- Cyan (9%)
- Magenta (22%)
- Yellow (23%)

Brightness & Saturation Gradients

These gradients show how the XYZ color 63.3422, 61.8213, 60.8188 changes by changing the brightness by 10 percent. The first figure shows a shift by +10% for each color and the second figure -10%.

Similar to the brightness gradients but the following saturation gradients show a change of the XYZ color 63.3422, 61.8213, 60.8188 by changing the saturation by 10% instead.

63.3422, 61.8213,
60.8188

63.3422, 61.8213,
60.8188

426.4503,
431.2790, 445.4975

46.3778, 44.8883,
43.6493

108.7421,
107.4672, 107.5715

32.7499, 31.3695,
30.0598

137.9083,
136.9489, 137.9918

22.0933, 20.8804,
19.6315

171.8725,
171.3824, 173.6662

14.0424, 13.0366,
11.9461

210.9999,
211.1519, 215.0131

8.2321, 7.4537,
6.5849

255.6561,
256.6419, 262.4512

4.2969, 3.7474,
3.1294

306.2063,

1.8714, 1.5333,

308.2369, 316.3989

1.1611

363.0159,
366.3211, 377.2748

■ 0.5601, 0.3120,
0.0000

■ 0.0000, 0.0000,
0.0000

■ 63.3422, 61.8213,
60.8188

■ 63.3422, 61.8213,
60.8188

■ 56.3867, 51.7987,
46.5114

■ 71.3802, 73.3598,
77.4857

■ 50.4625, 43.2212,
34.4532

■ 80.5390, 86.4649,
96.6078

■ 45.5220, 36.0245,
24.5309

■ 86.7652, 95.7290,
108.5123

■ 41.5117, 30.1365,
16.6198

■ 38.3730, 25.4782,
10.5822

■ 36.0407, 21.9623,
6.2632

■ 34.4402, 19.4901,
3.4830

■ 33.4828, 17.9456,
2.0219

■ 33.2023, 17.4833,
1.6247

Harmonies

Analogous

The Analogous color harmony consists of three colors that are next to each other on the color wheel.



63.9472, 61.8213, 67.8983



63.3422, 61.8213, 60.8188



61.4984, 61.8213, 55.8225

Triad

The Triadic color harmony groups three colors that are evenly spaced from another and form a triangle on the color wheel.



63.3422, 61.8213, 60.8188



54.5968, 61.8213, 59.8788



58.5557, 61.8213, 82.8110

Complementary

The Complementary color scheme is a pair of colors which are on the opposite of each other on the color wheel.



63.3422, 61.8213, 60.8188



64.9317, 72.9904, 86.2681

Split Complementary

Split-complementary colors differ from the complementary color scheme. The scheme consists of three colors, the original color and two neighbors of the complement color.



56.1027, 61.8213, 80.2808



63.3422, 61.8213, 60.8188



53.8598, 61.8213, 66.7309

Square

The Square scheme is like the rectangle color scheme, but the four colors are evenly spaced on the color wheel.



63.3422, 61.8213, 60.8188



56.4457, 61.8213, 55.3089



54.4029, 61.8213, 74.2535



61.1353, 61.8213, 80.9390

Rectangle

The Rectangle color scheme consists of four colors that form a rectangle on the color wheel.



63.3422, 61.8213, 60.8188



59.8422, 61.8213, 54.1571



54.4029, 61.8213, 74.2535



57.6895, 61.8213, 82.4432

Sweetspot

The Sweet Spot groups the original color and five complimentary colors.



63.3439, 61.8241, 60.8201



89.4584, 91.9934, 97.2429



66.7107, 62.0757, 81.9257



18.9857, 19.4581, 20.4767



0.0000, 0.0000, 0.0000



20.3446, 21.4041, 23.3091

Same Dimension

The Same Dimension uses a secret algorithm to generate beautiful new colors.



63.3439, 61.8241, 60.8201



76.5653, 73.4769, 70.5336



67.5822, 70.3006, 62.2329



14.4759, 14.5658, 14.9530



18.6504, 9.8750, 0.9231



1.4128, 0.7988, 0.0797

Inverse Universe

The Inverse Universe completely reimagines the original color for something new.



64.9317, 72.9904, 86.2681



78.8888, 89.8219, 107.7872



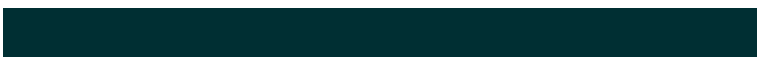
60.3804, 63.8879, 84.7510



14.6961, 16.1136, 18.4800



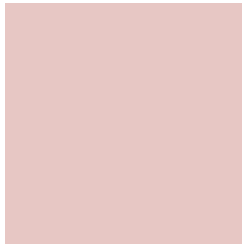
21.2151, 29.4923, 46.9576



1.5990, 2.2420, 3.4804

Previews

White Background



This preview shows how the XYZ color 63.3422, 61.8213, 60.8188 looks on a white background.

Color Contrast Check

Large Text (above 18pt) WCAG AA × Fail

Any Text WCAG AA × Fail

Large Text (above 18pt) WCAG AAA × Fail

Any Text WCAG AAA × Fail

Black Background



This preview shows how the XYZ color 63.3422, 61.8213, 60.8188 looks on a black background.

Color Contrast Check

Large Text (above 18pt) WCAG AA ✓ Pass

Any Text WCAG AA ✓ Pass

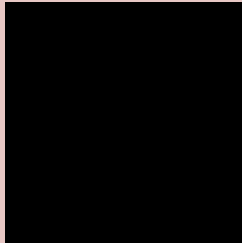
Large Text (above 18pt) WCAG AAA ✓ Pass

Any Text WCAG AAA ✓ Pass

If you want to check with other color combinations, try the [Color Contrast Checker](#).

XYZ 63.3422, 61.8213, 60.8188

Background



This preview shows how black text looks on a background with the XYZ color 63.3422, 61.8213, 60.8188.



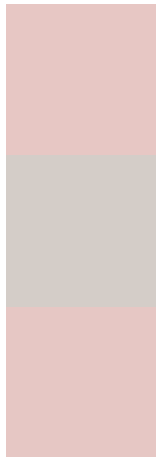
This preview shows how white text looks on a background with the XYZ color 63.3422, 61.8213,

60.8188.

Color Blindness Simulation

Color vision deficiency is a very complex topic, and I could not describe the different causes any better than Wikipedia does, so if you want to learn more, you should check out their [article about color blindness](#).

Dichromacy



Original Color

63.3422, 61.8213, 60.8188

Protanopia

59.4080, 61.8298, 63.4468

Deuteranopia

63.0204, 61.6554, 60.8037



Tritanopia

65.4542, 62.0096, 70.8066

Trichromacy



Original Color

63.3422, 61.8213, 60.8188

Protanomaly

60.8782, 61.8955, 62.7712

Deuteranomaly

63.0204, 61.6554, 60.8037

Tritanomaly

64.6134, 62.0002, 66.9543

Monochromacy



Original Color

63.3422, 61.8213, 60.8188

Achromatopsia

59.9535, 63.0757, 68.6895

Achromatomaly

61.0493, 62.6212, 65.9962

CSS Examples

Text

The CSS property to change the color of the text to XYZ 63.3422, 61.8213, 60.8188 is called "color". The color property can be set on classes, ids or directly on the HTML element.

This example shows how text in the color `rgb(231, 199, 196)` looks like.

```
.text, #text, p{  
    color:rgb(231, 199, 196)  
}
```

If you want to add a text shadow in that color use the text-shadow property, you can generate a text shadow directly with our [CSS Text Shadow Generator](#).

Here you see how black text with a 4 pixel rgb(231, 199, 196) colored shadow looks like.

```
.shadow{ text-shadow: 4px 4px 2px rgb(231, 199, 196) }
```

Border

The CSS property to change the border of an element to XYZ 63.3422, 61.8213, 60.8188 is called "border". The border property can be set on classes, ids or directly on the HTML element.

This example shows the color as border, it can be applied via the CSS property "border" or "border-color".

```
.border, #border, table{ border:4px solid rgb(231, 199, 196) }
```


If only the border color should be changed use the property `border-color`.

```
.border{ border-color:rgb(231, 199, 196) }
```

If you want to add a box shadow in that color use:

Here you see how a box with a 4 pixel `rgb(231, 199, 196)` colored shadow looks like.

```
.boxshadow{ -moz-box-shadow:4px 4px 4px  
4px rgb(231, 199, 196); -webkit-box-  
shadow:4px 4px 4px 4px rgb(231, 199, 196);  
box-shadow:4px 4px 4px 4px rgb(231, 199,  
196) }
```

Background

The CSS property to change the background color of an element to XYZ 63.3422, 61.8213, 60.8188 is called "background". The background property can be set on classes, ids or directly on the HTML element.

```
.background, #background, body{  
background: rgb(231, 199, 196) }
```

If only the background color should be changed can be used:

```
.background{ background-color: rgb(231,  
199, 196) }
```

This example shows the color as background, it is applied via the CSS property "background".

To optimize and compress your CSS code, you can use our [online CSS compressor and optimizer](#) based on csstidy. If you want to create a linear or radial gradient as background or border, check our [CSS Gradient Generator](#).

Hey! You found this booklet interesting? Support Converting Colors with the new Membership Option!

The pro membership hides all ads, plus gives you double the colors in the color bucket, and more awesome pro features!

[Learn more, Memberships starting at \\$2.50/m!](#)

**Follow me
on Twitter!**

@ConvertingColor