

Converting Colors

XYZ(63.3953, 64.7181, 58.4408)

Have a look what the booklet for
XYZ(63.3953, 64.7181, 58.4408)
contains.

XYZ(63.3953, 64.7181, 58.4408)	3
<i>Conversions</i>	4
<i>Details</i>	6
<i>Harmonies</i>	12
<i>Previews</i>	24
<i>Color Blindness Simulation</i>	28
<i>CSS Examples</i>	31

Color

**XYZ(63.3953, 64.7181,
58.4408)**

Conversions

Conversions Part 1

Format	Color
Hex	E3CFBF
RGB	227, 207, 191
RGB Percent	89%, 81%, 75%
CMY	0.1098, 0.1882, 0.2510
CMYK	0.00, 0.09, 0.16, 0.11
HSL	27°, 39%, 82%
HSV	27°, 16%, 89%
XYZ	63.3953, 64.7181, 58.4408
YIQ	211.1560, 17.0560, -0.7360

Conversions

Conversions Part 2

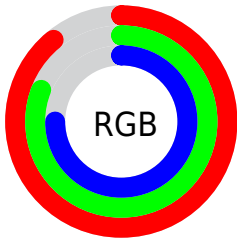
Format	Color
R _Y B	227, 220, 191
Decimal	14929855
CIE Lab	84.34, 4.37, 10.46
CIE LCh	84, 11.337, 67.337
Yxy	64.7181, 0.3398, 0.3469
Android (android.graphics.Color)	4293119935 (0xFFE3CFBF)
YUV	211.1560, -9.9369, 13.8952
Hunter-Lab	80.4476, -0.1194, 13.2423

Details

The XYZ color **63.3953, 64.7181, 58.4408** is a light color, and the websafe version is hex **CCCCCC**. A complement of this color would be **58.6449, 63.2095, 81.7832**, and the grayscale version is **62.0771, 65.3100, 71.1225**.

A 20% lighter version of the original color is **93.7885, 99.4954, 102.2570**, and **32.7733, 33.2754, 28.7402** is the 20% darker color. If you saturate the color by 10%, you get **58.1551, 57.9300, 45.3098**, and if you desaturate by 10%, it is **69.2702, 72.1548, 73.6951**.

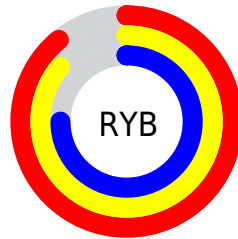
Distribution



Red (89%)

Green (81%)

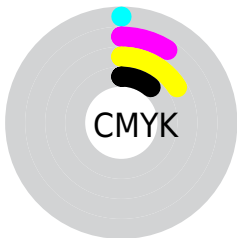
Blue (75%)



Red (89%)

Yellow (86%)

Blue (75%)

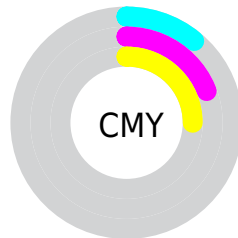


Cyan (0%)

Magenta (9%)

Yellow (16%)

Black (11%)



Cyan (11%)


Magenta (19%)


Yellow (25%)

Brightness & Saturation Gradients


These gradients show how the XYZ color 63.3953, 64.7181, 58.4408 changes by changing the brightness by 10 percent. The first figure shows a shift by +10% for each color and the second figure -10%.


Similar to the brightness gradients but the following saturation gradients show a change of the XYZ color 63.3953, 64.7181, 58.4408 by changing the saturation by 10% instead.


 63.3953, 64.7181,
58.4408

 63.3953, 64.7181,
58.4408


426.6396,
441.7783, 436.4705

 46.4209, 47.2325,
41.7461


 108.8182,
111.6445, 104.0856

 32.7841, 33.2195,
28.5784


137.9975,
141.8541, 133.8728

 22.1196, 22.2947,
18.5193


171.9757,
177.0738, 168.8612

 14.0619, 14.0736,
11.1502

211.1184,
217.6881, 209.4693

 8.2457, 8.1719,
6.0525

255.7907,
264.0812, 256.1158

 4.3057, 4.2051,
2.8077

306.3581,

 1.8765, 1.7889,

316.6377, 309.2191

0.9973

363.1860,
375.7419, 369.1978

■ 0.5631, 0.4803,
0.0000

■ 0.0000, 0.0000,
0.0000

■ 63.3953, 64.7181,
58.4408

■ 63.3953, 64.7181,
58.4408

■ 58.1551, 57.9300,
45.3098

■ 69.2702, 72.1548,
73.6951

■ 53.5208, 51.7634,
34.2024

■ 75.7967, 80.2490,
91.1579

■ 49.4693, 46.2017,
25.0171

■ 82.3299, 88.7534,
107.3996

■ 45.9734, 41.2244,
17.6418

■ 85.4887, 95.0710,
108.4525

■ 43.0038, 36.8094,
11.9527

■ 40.5277, 32.9331,
7.8102

■ 38.5076, 29.5693,
5.0516

■ 36.8986, 26.6882,
3.4765

■ 36.3243, 25.6222,
3.0311

Harmonies

Analogous

The Analogous color harmony consists of three colors that are next to each other on the color wheel.



65.4393, 64.7181, 62.3944



63.3953, 64.7181, 58.4408



60.8969, 64.7181, 57.6008

Triad

The Triadic color harmony groups three colors that are evenly spaced from another and form a triangle on the color wheel.



63.3953, 64.7181, 58.4408



56.8387, 64.7181, 72.2510



64.4933, 64.7181, 82.0653

Complementary

The Complementary color scheme is a pair of colors which are on the opposite of each other on the color wheel.



63.3953, 64.7181, 58.4408



58.6449, 63.2095, 81.7832

Split Complementary

Split-complementary colors differ from the complementary color scheme. The scheme consists of three colors, the original color and two neighbors of the complement color.



62.1324, 64.7181, 85.1192



63.3953, 64.7181, 58.4408



57.7463, 64.7181, 79.2075

Square

The Square scheme is like the rectangle color scheme, but the four colors are evenly spaced on the color wheel.



63.3953, 64.7181, 58.4408



57.1560, 64.7181, 65.2629



59.6676, 64.7181, 84.0393



66.0851, 64.7181, 75.9407

Rectangle

The Rectangle color scheme consists of four colors that form a rectangle on the color wheel.



63.3953, 64.7181, 58.4408



59.3179, 64.7181, 58.8633



59.6676, 64.7181, 84.0393



63.7608, 64.7181, 83.5034

Sweetspot

The Sweet Spot groups the original color and five complimentary colors.



63.3971, 64.7210, 58.4422



90.8469, 94.7704, 97.7058



62.1181, 58.3166, 69.8742



19.3223, 20.1312, 20.5889



0.0000, 0.0000, 0.0000



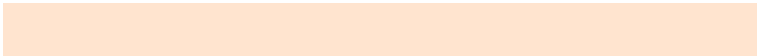
20.3446, 21.4041, 23.3091

Same Dimension

The Same Dimension uses a secret algorithm to generate beautiful new colors.



63.3971, 64.7210, 58.4422



80.2155, 81.2789, 70.2040



67.9003, 73.7274, 59.9432



14.9018, 15.4174, 15.0949



21.2967, 15.1676, 1.8052



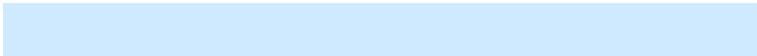
1.6652, 1.3037, 0.1639

Inverse Universe

The Inverse Universe completely reimagines the original color for something new.



58.6449, 63.2095, 81.7832



72.9261, 78.9597, 106.0049



54.5103, 54.9404, 80.4050



14.2433, 15.2081, 18.3291



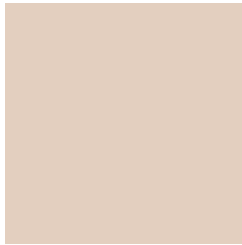
12.5618, 12.1856, 44.0732



1.0206, 1.0851, 3.2876

Previews

White Background



This preview shows how the XYZ color 63.3953, 64.7181, 58.4408 looks on a white background.

Color Contrast Check

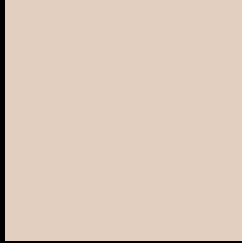
Large Text (above 18pt) WCAG AA × Fail

Any Text WCAG AA × Fail

Large Text (above 18pt) WCAG AAA × Fail

Any Text WCAG AAA × Fail

Black Background



This preview shows how the XYZ color 63.3953, 64.7181, 58.4408 looks on a black background.

Color Contrast Check

Large Text (above 18pt) WCAG AA ✓ Pass

Any Text WCAG AA ✓ Pass

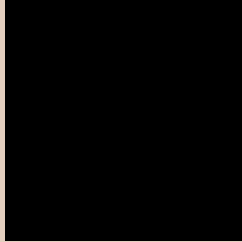
Large Text (above 18pt) WCAG AAA ✓ Pass

Any Text WCAG AAA ✓ Pass

If you want to check with other color combinations, try the [Color Contrast Checker](#).

XYZ 63.3953, 64.7181, 58.4408

Background



This preview shows how black text looks on a background with the XYZ color 63.3953, 64.7181, 58.4408.



This preview shows how white text looks on a background with the XYZ color 63.3953, 64.7181,

58.4408.

Color Blindness Simulation

Color vision deficiency is a very complex topic, and I could not describe the different causes any better than Wikipedia does, so if you want to learn more, you should check out their [article about color blindness](#).

Dichromacy



Original Color

63.3953, 64.7181, 58.4408

Protanopia

61.4745, 64.8044, 59.1376

Deuteranopia

66.1303, 64.6948, 58.8711



Tritanopia

67.0971, 64.8153, 75.9920

Trichromacy



Original Color

63.3953, 64.7181, 58.4408

Protanomaly

62.1337, 64.7789, 59.0979

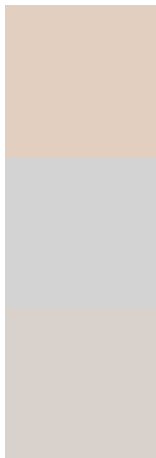
Deuteranomaly

65.0390, 64.4839, 58.8879

Tritanomaly

65.7346, 64.6122, 69.3284

Monochromacy



Original Color

63.3953, 64.7181, 58.4408

Achromatopsia

61.9161, 65.1406, 70.9381

Achromatomaly

62.5609, 65.2045, 66.4152

CSS Examples

Text

The CSS property to change the color of the text to XYZ 63.3953, 64.7181, 58.4408 is called "color". The color property can be set on classes, ids or directly on the HTML element.

This example shows how text in the color `rgb(227, 207, 191)` looks like.

```
.text, #text, p{  
    color:rgb(227, 207, 191)  
}
```

If you want to add a text shadow in that color use the text-shadow property, you can generate a text shadow directly with our [CSS Text Shadow Generator](#).

Here you see how black text with a 4 pixel rgb(227, 207, 191) colored shadow looks like.

```
.shadow{ text-shadow: 4px 4px 2px rgb(227, 207, 191) }
```

Border

The CSS property to change the border of an element to XYZ 63.3953, 64.7181, 58.4408 is called "border". The border property can be set on classes, ids or directly on the HTML element.

This example shows the color as border, it can be applied via the CSS property "border" or "border-color".

```
.border, #border, table{ border:4px solid rgb(227, 207, 191) }
```


If only the border color should be changed use the property `border-color`.

```
.border{ border-color:rgb(227, 207, 191) }
```

If you want to add a box shadow in that color use:

Here you see how a box with a 4 pixel `rgb(227, 207, 191)` colored shadow looks like.

```
.boxshadow{ -moz-box-shadow:4px 4px 4px  
4px rgb(227, 207, 191); -webkit-box-  
shadow:4px 4px 4px 4px rgb(227, 207, 191);  
box-shadow:4px 4px 4px 4px rgb(227, 207,  
191) }
```

Background

The CSS property to change the background color of an element to XYZ 63.3953, 64.7181, 58.4408 is called "background". The background property can be set on classes, ids or directly on the HTML element.

```
.background, #background, body{  
background: rgb(227, 207, 191) }
```

If only the background color should be changed can be used:

```
.background{ background-color: rgb(227,  
207, 191) }
```

This example shows the color as background, it is applied via the CSS property "background".

To optimize and compress your CSS code, you can use our [online CSS compressor and optimizer](#) based on csstidy. If you want to create a linear or radial gradient as background or border, check our [CSS Gradient Generator](#).

Hey! You found this booklet interesting? Support Converting Colors with the new Membership Option!

The pro membership hides all ads, plus gives you double the colors in the color bucket, and more awesome pro features!

[Learn more, Memberships starting at \\$2.50/m!](#)

**Follow me
on Twitter!**

@ConvertingColor