

Converting Colors

XYZ(63.4342, 61.4490, 63.1724)

Have a look what the booklet for
XYZ(63.4342, 61.4490, 63.1724)
contains.

XYZ(63.5744, 61.5472, 63.1727)	3
<i>Conversions</i>	4
<i>Details</i>	6
<i>Harmonies</i>	12
<i>Previews</i>	24
<i>Color Blindness Simulation</i>	28
<i>CSS Examples</i>	31

Color

**XYZ(63.5744, 61.5472,
63.1727)**

Conversions

Conversions Part 1

Format	Color
Hex	E7C6C8
RGB	231, 198, 200
RGB Percent	91%, 78%, 78%
CMY	0.0941, 0.2235, 0.2157
CMYK	0.00, 0.14, 0.13, 0.09
HSL	356°, 41%, 84%
HSV	356°, 14%, 91%
XYZ	63.5744, 61.5472, 63.1727
YIQ	208.0950, 19.0260, 7.6180

Conversions

Conversions Part 2

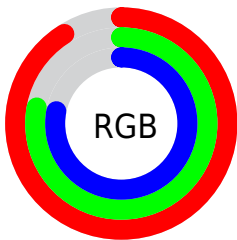
Format	Color
RYP	231, 198, 200
Decimal	15189704
CIELab	82.67, 11.96, 3.32
CIElCh	83, 12.412, 15.491
Yxy	61.5472, 0.3376, 0.3269
Android (android.graphics.Color)	4293379784 (0xFFE7C6C8)
YUV	208.0950, -3.9908, 20.0877
Hunter-Lab	78.4520, 7.3583, 7.1737

Details

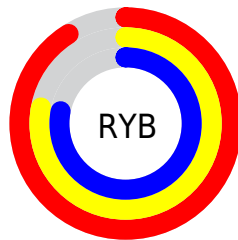
The XYZ color **63.5744, 61.5472, 63.1727** is a light color, and the websafe version is hex **FFCCCC**. A complement of this color would be **66.0098, 74.8162, 85.0942**, and the grayscale version is **60.0336, 63.1601, 68.7813**.

A 20% lighter version of the original color is **95.0500, 100.0000, 108.9000**, and **32.8408, 31.1358, 31.4730** is the 20% darker color. If you saturate the color by 10%, you get **56.3328, 50.8386, 49.1207**, and if you desaturate by 10%, it is **71.9848, 74.0158, 79.3920**.

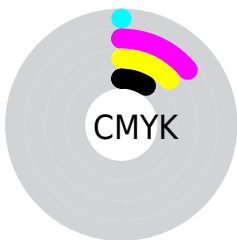
Distribution



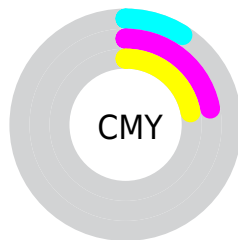
- Red (91%)
- Green (78%)
- Blue (78%)



- Red (91%)
- Yellow (78%)
- Blue (78%)



- Cyan (0%)
- Magenta (14%)
- Yellow (13%)
- Black (9%)



- Cyan (9%)
- Magenta (22%)
- Yellow (22%)

Brightness & Saturation Gradients

These gradients show how the XYZ color 63.5744, 61.5472, 63.1727 changes by changing the brightness by 10 percent. The first figure shows a shift by +10% for each color and the second figure -10%.

Similar to the brightness gradients but the following saturation gradients show a change of the XYZ color 63.5744, 61.5472, 63.1727 by changing the saturation by 10% instead.

63.5744, 61.5472,
63.1727

63.5744, 61.5472,
63.1727

427.2777,
430.2775, 454.3212

46.5664, 44.6669,
45.5390

109.0749,
107.0708, 111.0066

32.8996, 31.1952,
31.5362

138.2982,
136.4830, 142.0439

22.2084, 20.7475,
20.7456

172.3240,
170.8412, 178.3862

14.1275, 12.9396,
12.7487

211.5176,
210.5300, 220.4520

8.2917, 7.3869,
7.1271

256.2445,
255.9335, 268.6599

4.3356, 3.7052,
3.4620

306.8699,

1.8937, 1.5101,

307.4364, 323.4283

1.3351

363.7592,
365.4229, 385.1759

■ 0.5732, 0.2958,
0.0903

■ 0.0000, 0.0000,
0.0000

■ 63.5744, 61.5472,
63.1727

■ 63.5744, 61.5472,
63.1727

■ 56.3328, 50.8386,
49.1207

■ 71.9848, 74.0158,
79.3920

■ 50.2033, 41.8029,
37.1406

■ 81.6071, 88.3100,
97.8609

■ 45.1324, 34.3583,
27.1354

■ 86.7653, 95.7291,
108.5123

■ 41.0601, 28.4125,
18.9992

■ 37.9202, 23.8639,
12.6158

■ 35.6389, 20.5983,
7.8564

■ 34.1306, 18.4834,
4.5740

■ 33.2926, 17.3585,
2.5955

■ 33.0344, 17.0207,
1.9588

Harmonies

Analogous

The Analogous color harmony consists of three colors that are next to each other on the color wheel.



63.5984, 61.5472, 70.7568



63.5744, 61.5472, 63.1727



62.1631, 61.5472, 57.0890

Triad

The Triadic color harmony groups three colors that are evenly spaced from another and form a triangle on the color wheel.



63.5744, 61.5472, 63.1727



54.9218, 61.5472, 57.2489



57.2250, 61.5472, 82.2411

Complementary

The Complementary color scheme is a pair of colors which are on the opposite of each other on the color wheel.



63.5744, 61.5472, 63.1727



66.0098, 74.8162, 85.0942

Split Complementary

Split-complementary colors differ from the complementary color scheme. The scheme consists of three colors, the original color and two neighbors of the complement color.



54.9814, 61.5472, 78.0283



63.5744, 61.5472, 63.1727



53.6793, 61.5472, 63.4064

Square

The Square scheme is like the rectangle color scheme, but the four colors are evenly spaced on the color wheel.



63.5744, 61.5472, 63.1727



57.1415, 61.5472, 53.8500



53.7007, 61.5472, 71.0089



59.8774, 61.5472, 82.1665

Rectangle

The Rectangle color scheme consists of four colors that form a rectangle on the color wheel.



63.5744, 61.5472, 63.1727



60.6492, 61.5472, 54.5346



53.7007, 61.5472, 71.0089



56.3998, 61.5472, 81.2662

Sweetspot

The Sweet Spot groups the original color and five complimentary colors.



63.5761, 61.5499, 63.1740



90.3771, 93.0619, 99.9197



66.8689, 62.7856, 84.1964



19.1622, 19.6487, 21.0364



0.0000, 0.0000, 0.0000



20.3446, 21.4041, 23.3091

Same Dimension

The Same Dimension uses a secret algorithm to generate beautiful new colors.



63.5761, 61.5499, 63.1740



76.8685, 73.0411, 73.8478



66.7684, 68.3054, 63.0946



14.4122, 14.3821, 15.1049



18.5343, 9.5479, 1.1766



1.3821, 0.7106, 0.1529

Inverse Universe

The Inverse Universe completely reimagines the original color for something new.



63.5761, 61.5499, 63.1740



76.8685, 73.0411, 73.8478



62.4504, 67.2487, 85.2908



14.4122, 14.3821, 15.1049



18.5343, 9.5479, 1.1766



1.3821, 0.7106, 0.1529

Previews

White Background



This preview shows how the XYZ color 63.5744, 61.5472, 63.1727 looks on a white background.

Color Contrast Check

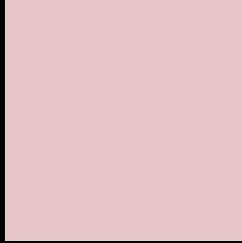
Large Text (above 18pt) WCAG AA × Fail

Any Text WCAG AA × Fail

Large Text (above 18pt) WCAG AAA × Fail

Any Text WCAG AAA × Fail

Black Background



This preview shows how the XYZ color 63.5744, 61.5472, 63.1727 looks on a black background.

Color Contrast Check

Large Text (above 18pt) WCAG AA ✓ Pass

Any Text WCAG AA ✓ Pass

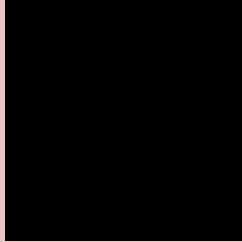
Large Text (above 18pt) WCAG AAA ✓ Pass

Any Text WCAG AAA ✓ Pass

If you want to check with other color combinations, try the [Color Contrast Checker](#).

XYZ 63.5744, 61.5472, 63.1727

Background



This preview shows how black text looks on a background with the XYZ color 63.5744, 61.5472, 63.1727.



This preview shows how white text looks on a background with the XYZ color 63.5744, 61.5472,

Color Blindness Simulation

Color vision deficiency is a very complex topic, and I could not describe the different causes any better than Wikipedia does, so if you want to learn more, you should check out their [article about color blindness](#).

Dichromacy



Original Color

63.5744, 61.5472, 63.1727

Protanopia

59.3087, 61.7239, 65.9147

Deuteranopia

62.8437, 61.5110, 63.2042



Tritanopia

65.2279, 61.5570, 70.7312

Trichromacy



Original Color

63.5744, 61.5472, 63.1727

Protanomaly

60.8135, 61.4583, 65.1573

Deuteranomaly

63.1618, 61.6750, 63.2191

Tritanomaly

64.6301, 61.6424, 68.1663

Monochromacy



Original Color

63.5744, 61.5472, 63.1727

Achromatopsia

59.9535, 63.0757, 68.6895

Achromatomaly

60.9312, 62.1924, 66.5505

CSS Examples

Text

The CSS property to change the color of the text to XYZ 63.5744, 61.5472, 63.1727 is called "color". The color property can be set on classes, ids or directly on the HTML element.

This example shows how text in the color `rgb(231, 198, 200)` looks like.

```
.text, #text, p{  
    color:rgb(231, 198, 200)  
}
```

If you want to add a text shadow in that color use the text-shadow property, you can generate a text shadow directly with our [CSS Text Shadow Generator](#).

Here you see how black text with a 4 pixel rgb(231, 198, 200) colored shadow looks like.

```
.shadow{ text-shadow: 4px 4px 2px rgb(231, 198, 200) }
```

Border

The CSS property to change the border of an element to XYZ 63.5744, 61.5472, 63.1727 is called "border". The border property can be set on classes, ids or directly on the HTML element.

This example shows the color as border, it can be applied via the CSS property "border" or "border-color".

```
.border, #border, table{ border:4px solid rgb(231, 198, 200) }
```


If only the border color should be changed use the property `border-color`.

```
.border{ border-color:rgb(231, 198, 200) }
```

If you want to add a box shadow in that color use:

Here you see how a box with a 4 pixel `rgb(231, 198, 200)` colored shadow looks like.

```
.boxshadow{ -moz-box-shadow:4px 4px 4px  
4px rgb(231, 198, 200); -webkit-box-  
shadow:4px 4px 4px 4px rgb(231, 198, 200);  
box-shadow:4px 4px 4px 4px rgb(231, 198,  
200) }
```

Background

The CSS property to change the background color of an element to XYZ 63.5744, 61.5472, 63.1727 is called "background". The background property can be set on classes, ids or directly on the HTML element.

```
.background, #background, body{  
background: rgb(231, 198, 200) }
```

If only the background color should be changed can be used:

```
.background{ background-color: rgb(231,  
198, 200) }
```

This example shows the color as background, it is applied via the CSS property "background".

To optimize and compress your CSS code, you can use our [online CSS compressor and optimizer](#) based on csstidy. If you want to create a linear or radial gradient as background or border, check our [CSS Gradient Generator](#).

Hey! You found this booklet interesting? Support Converting Colors with the new Membership Option!

The pro membership hides all ads, plus gives you double the colors in the color bucket, and more awesome pro features!

[Learn more, Memberships starting at \\$2.50/m!](#)

**Follow me
on Twitter!**

@ConvertingColor