

Converting Colors

XYZ(63.4663, 63.7096, 66.5936)

Have a look what the booklet for
XYZ(63.4663, 63.7096, 66.5936)
contains.

XYZ(63.5912, 63.9177, 66.7433)	3
<i>Conversions</i>	4
<i>Details</i>	6
<i>Harmonies</i>	12
<i>Previews</i>	24
<i>Color Blindness Simulation</i>	28
<i>CSS Examples</i>	31

Color

**XYZ(63.5912, 63.9177,
66.7433)**

Conversions

Conversions Part 1

Format	Color
Hex	E0CDCD
RGB	224, 205, 205
RGB Percent	88%, 80%, 80%
CMY	0.1216, 0.1961, 0.1961
CMYK	0.00, 0.08, 0.08, 0.12
HSL	0°, 23%, 84%
HSV	0°, 8%, 88%
XYZ	63.5912, 63.9177, 66.7433
YIQ	210.6810, 11.3240, 4.0280

Conversions

Conversions Part 2

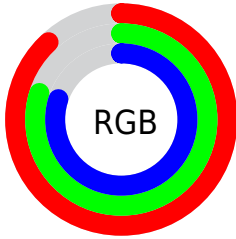
Format	Color
R_{YB}	224, 205, 205
Decimal	14732749
CIE _{Lab}	83.92, 6.61, 2.39
CIE _{LCh}	84, 7.026, 19.857
Yxy	63.9177, 0.3274, 0.3290
Android (android.graphics.Color)	4292922829 (0xFFE0CDD)
YUV	210.6810, -2.8007, 11.6808
Hunter-Lab	79.9485, 2.0692, 6.4670

Details

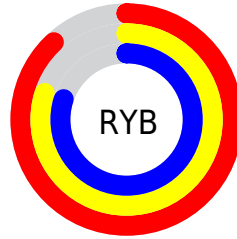
The XYZ color **63.5912, 63.9177, 66.7433** is a light color, and the websafe version is hex **CCCCCC**. A complement of this color would be **65.2867, 71.6709, 80.9146**, and the grayscale version is **61.7206, 64.9348, 70.7140**.

A 20% lighter version of the original color is **95.0500, 100.0000, 108.9000**, and **33.0147, 32.8026, 33.8696** is the 20% darker color. If you saturate the color by 10%, you get **56.0997, 52.9561, 51.8472**, and if you desaturate by 10%, it is **72.2402, 76.5734, 83.9366**.

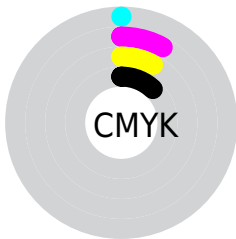
Distribution



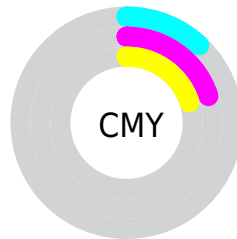
- Red (88%)
- Green (80%)
- Blue (80%)



- Red (88%)
- Yellow (80%)
- Blue (80%)



- Cyan (0%)
- Magenta (8%)
- Yellow (8%)
- Black (12%)



- Cyan (12%)
- Magenta (20%)
- Yellow (20%)

Brightness & Saturation Gradients

These gradients show how the XYZ color 63.5912, 63.9177, 66.7433 changes by changing the brightness by 10 percent. The first figure shows a shift by +10% for each color and the second figure -10%.

Similar to the brightness gradients but the following saturation gradients show a change of the XYZ color 63.5912, 63.9177, 66.7433 by changing the saturation by 10% instead.

63.5912, 63.9177,
66.7433

63.5912, 63.9177,
66.7433

427.3375,
438.8924, 467.5071

46.5801, 46.5840,
48.4158

109.0990,
110.4924, 116.1897

32.9104, 32.7069,
33.7939

138.3264,
140.5022, 148.1456

22.2167, 21.9020,
22.4593

172.3567,
175.5062, 185.4813

14.1337, 13.7849,
13.9932

211.5551,
215.8887, 228.6155

8.2960, 7.9712,
7.9772

256.2870,
262.0342, 277.9666

4.3384, 4.0765,
3.9928

306.9178,

1.8953, 1.7165,

314.3271, 333.9532

1.6214

363.8129,
373.1517, 396.9939

■ 0.5741, 0.4343,
0.3060

■ 0.0000, 0.0000,
0.0000

■ 63.5912, 63.9177,
66.7433

■ 63.5912, 63.9177,
66.7433

■ 56.0997, 52.9561,
51.8472

■ 72.2402, 76.5734,
83.9366

■ 49.7116, 43.6086,
39.1473

■ 82.0873, 90.9817,
103.5142

■ 44.3764, 35.8018,
28.5409

■ 84.5508, 94.5874,
108.4086

■ 40.0376, 29.4529,
19.9157

■ 36.6334, 24.4715,
13.1488

■ 34.0953, 20.7572,
8.1038

■ 32.3451, 18.1959,
4.6255

■ 31.2909, 16.6530,
2.5308

■ 30.7968, 15.9297,
1.5492

Harmonies

Analogous

The Analogous color harmony consists of three colors that are next to each other on the color wheel.



63.7256, 63.9177, 71.1058



63.5912, 63.9177, 66.7433



62.6888, 63.9177, 63.2876

Triad

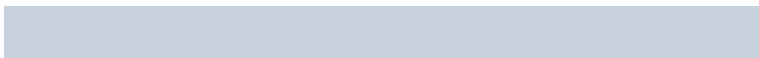
The Triadic color harmony groups three colors that are evenly spaced from another and form a triangle on the color wheel.



63.5912, 63.9177, 66.7433



58.5074, 63.9177, 64.2493



60.2298, 63.9177, 78.3178

Complementary

The Complementary color scheme is a pair of colors which are on the opposite of each other on the color wheel.



63.5912, 63.9177, 66.7433



65.2867, 71.6709, 80.9146

Split Complementary

Split-complementary colors differ from the complementary color scheme. The scheme consists of three colors, the original color and two neighbors of the complement color.



58.8553, 63.9177, 76.3092



63.5912, 63.9177, 66.7433



57.8721, 63.9177, 68.1068

Square

The Square scheme is like the rectangle color scheme, but the four colors are evenly spaced on the color wheel.



63.5912, 63.9177, 66.7433



59.7476, 63.9177, 61.8906



57.9983, 63.9177, 72.5278



61.7673, 63.9177, 77.9148

Rectangle

The Rectangle color scheme consists of four colors that form a rectangle on the color wheel.



63.5912, 63.9177, 66.7433



61.7814, 63.9177, 61.9040



57.9983, 63.9177, 72.5278



59.7338, 63.9177, 77.8991

Sweetspot

The Sweet Spot groups the original color and five complimentary colors.



63.5930, 63.9205, 66.7447



91.4510, 94.7338, 101.7446



66.0271, 64.8926, 79.5672



19.3736, 19.9834, 21.3786



0.0000, 0.0000, 0.0000



20.3446, 21.4041, 23.3091

Same Dimension

The Same Dimension uses a secret algorithm to generate beautiful new colors.



63.5930, 63.9205, 66.7447



83.6121, 83.2638, 86.1600



65.9340, 68.6025, 67.5250



13.7075, 13.7010, 14.2289



17.8936, 9.2251, 0.8375



1.2404, 0.6396, 0.0581

Inverse Universe

The Inverse Universe completely reimagines the original color for something new.



65.2867, 71.6709, 80.9146



86.2812, 95.4770, 108.4891



62.8055, 66.7084, 80.0875



14.1164, 15.5719, 17.6493



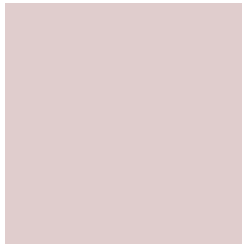
23.3398, 34.1492, 46.4097



1.6179, 2.3672, 3.2169

Previews

White Background



This preview shows how the XYZ color 63.5912, 63.9177, 66.7433 looks on a white background.

Color Contrast Check

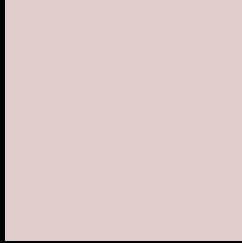
Large Text (above 18pt) WCAG AA × Fail

Any Text WCAG AA × Fail

Large Text (above 18pt) WCAG AAA × Fail

Any Text WCAG AAA × Fail

Black Background



This preview shows how the XYZ color 63.5912, 63.9177, 66.7433 looks on a black background.

Color Contrast Check

Large Text (above 18pt) WCAG AA ✓ Pass

Any Text WCAG AA ✓ Pass

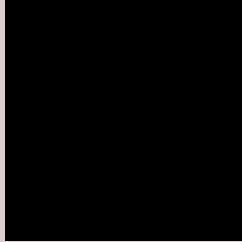
Large Text (above 18pt) WCAG AAA ✓ Pass

Any Text WCAG AAA ✓ Pass

If you want to check with other color combinations, try the [Color Contrast Checker](#).

XYZ 63.5912, 63.9177, 66.7433

Background



This preview shows how black text looks on a background with the XYZ color 63.5912, 63.9177, 66.7433.



This preview shows how white text looks on a background with the XYZ color 63.5912, 63.9177,

Color Blindness Simulation

Color vision deficiency is a very complex topic, and I could not describe the different causes any better than Wikipedia does, so if you want to learn more, you should check out their [article about color blindness](#).

Dichromacy



Original Color

63.5912, 63.9177, 66.7433

Protanopia

61.2589, 63.7629, 68.1103

Deuteranopia

65.0950, 63.6378, 66.6100



Tritanopia

65.5061, 63.9951, 75.9176

Trichromacy



Original Color

63.5912, 63.9177, 66.7433

Protanomaly

62.0687, 63.8336, 67.4423

Deuteranomaly

64.3703, 63.6136, 66.6436

Tritanomaly

64.7818, 64.0483, 72.5665

Monochromacy



Original Color

63.5912, 63.9177, 66.7433

Achromatopsia

61.9161, 65.1406, 70.9381

Achromatomaly

62.6280, 64.8033, 69.5290

CSS Examples

Text

The CSS property to change the color of the text to XYZ 63.5912, 63.9177, 66.7433 is called "color". The color property can be set on classes, ids or directly on the HTML element.

This example shows how text in the color `rgb(224, 205, 205)` looks like.

```
.text, #text, p{  
    color:rgb(224, 205, 205)  
}
```

If you want to add a text shadow in that color use the text-shadow property, you can generate a text shadow directly with our [CSS Text Shadow Generator](#).

Here you see how black text with a 4 pixel rgb(224, 205, 205) colored shadow looks like.

```
.shadow{ text-shadow: 4px 4px 2px rgb(224, 205, 205) }
```

Border

The CSS property to change the border of an element to XYZ 63.5912, 63.9177, 66.7433 is called "border". The border property can be set on classes, ids or directly on the HTML element.

This example shows the color as border, it can be applied via the CSS property "border" or "border-color".

```
.border, #border, table{ border:4px solid rgb(224, 205, 205) }
```


If only the border color should be changed use the property border-color.

```
.border{ border-color:rgb(224, 205, 205) }
```

If you want to add a box shadow in that color use:

Here you see how a box with a 4 pixel rgb(224, 205, 205) colored shadow looks like.

```
.boxshadow{ -moz-box-shadow:4px 4px 4px  
4px rgb(224, 205, 205); -webkit-box-  
shadow:4px 4px 4px 4px rgb(224, 205, 205);  
box-shadow:4px 4px 4px 4px rgb(224, 205,  
205) }
```

Background

The CSS property to change the background color of an element to XYZ 63.5912, 63.9177, 66.7433 is called "background". The background property can be set on classes, ids or directly on the HTML element.

```
.background, #background, body{  
background: rgb(224, 205, 205) }
```

If only the background color should be changed can be used:

```
.background{ background-color: rgb(224,  
205, 205) }
```

This example shows the color as background, it is applied via the CSS property "background".

To optimize and compress your CSS code, you can use our [online CSS compressor and optimizer](#) based on csstidy. If you want to create a linear or radial gradient as background or border, check our [CSS Gradient Generator](#).

Hey! You found this booklet interesting? Support Converting Colors with the new Membership Option!

The pro membership hides all ads, plus gives you double the colors in the color bucket, and more awesome pro features!

[Learn more, Memberships starting at \\$2.50/m!](#)

**Follow me
on Twitter!**

@ConvertingColor