

Converting Colors

XYZ(63.4731, 62.8343, 64.8304)

Have a look what the booklet for
XYZ(63.4731, 62.8343, 64.8304)
contains.

XYZ(63.4598, 62.8362, 64.6610)	3
<i>Conversions</i>	4
<i>Details</i>	6
<i>Harmonies</i>	12
<i>Previews</i>	24
<i>Color Blindness Simulation</i>	28
<i>CSS Examples</i>	31

Color

**XYZ(63.4598, 62.8362,
64.6610)**

Conversions

Conversions Part 1

Format	Color
Hex	E3CACA
RGB	227, 202, 202
RGB Percent	89%, 79%, 79%
CMY	0.1098, 0.2078, 0.2078
CMYK	0.00, 0.11, 0.11, 0.11
HSL	0°, 31%, 84%
HSV	0°, 11%, 89%
XYZ	63.4598, 62.8362, 64.6610
YIQ	209.4750, 14.9000, 5.3000

Conversions

Conversions Part 2

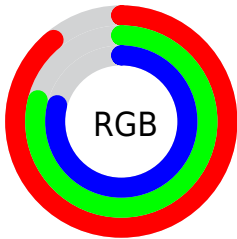
Format	Color
R _Y B	227, 202, 202
Decimal	14928586
CIE Lab	83.36, 8.75, 3.19
CIE LCh	83, 9.315, 20.059
Yxy	62.8362, 0.3323, 0.3291
Android (android.graphics.Color)	4293118666 (0xFFE3CACA)
YUV	209.4750, -3.6852, 15.3694
Hunter-Lab	79.2693, 4.1787, 7.1249

Details

The XYZ color **63.4598, 62.8362, 64.6610** is a light color, and the websafe version is hex **CCCCCC**. A complement of this color would be **65.6911, 73.0396, 83.3097**, and the grayscale version is **60.9326, 64.1058, 69.8112**.

A 20% lighter version of the original color is **95.0500, 100.0000, 108.9000**, and **32.7298, 31.9759, 32.4639** is the 20% darker color. If you saturate the color by 10%, you get **56.0282, 51.9621, 49.8844**, and if you desaturate by 10%, it is **72.0735, 75.4404, 81.7836**.

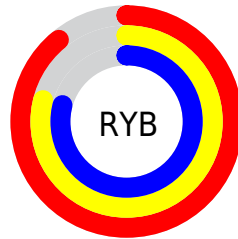
Distribution



Red (89%)

Green (79%)

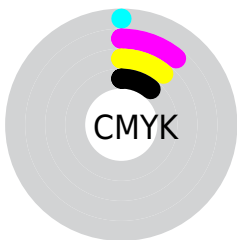
Blue (79%)



Red (89%)

Yellow (79%)

Blue (79%)

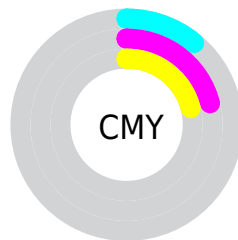


Cyan (0%)

Magenta (11%)

Yellow (11%)

Black (11%)



Cyan (11%)

Magenta (21%)

Yellow (21%)

Brightness & Saturation Gradients

These gradients show how the XYZ color 63.4598, 62.8362, 64.6610 changes by changing the brightness by 10 percent. The first figure shows a shift by +10% for each color and the second figure -10%.

Similar to the brightness gradients but the following saturation gradients show a change of the XYZ color 63.4598, 62.8362, 64.6610 by changing the saturation by 10% instead.

63.4598, 62.8362,
64.6610

63.4598, 62.8362,
64.6610

426.8695,
434.9748, 459.8456

46.4733, 45.7087,
46.7367

108.9107,
108.9332, 113.1709

32.8257, 32.0160,
32.4747

138.1058,
138.6714, 144.5936

22.1515, 21.3737,
21.4565

172.1012,
173.3821, 181.3528

14.0855, 13.3975,
13.2636

211.2622,
213.4495, 223.8671

8.2623, 7.7028,
7.4775

255.9542,
259.2581, 272.5549

4.3164, 3.9054,
3.6795

306.5425,

1.8827, 1.6208,

311.1922, 327.8350

1.4512

363.3924,
369.6363, 390.1257

■ 0.5667, 0.3715,
0.1812

■ 0.0000, 0.0000,
0.0000

■ 63.4598, 62.8362,
64.6610

■ 63.4598, 62.8362,
64.6610

■ 56.0282, 51.9621,
49.8844

■ 72.0735, 75.4404,
81.7836

■ 49.7222, 42.7347,
37.3480

■ 81.9122, 89.8368,
101.3440

■ 44.4886, 35.0764,
26.9437

■ 85.4889, 95.0711,
108.4525

■ 40.2676, 28.9000,
18.5529

■ 36.9940, 24.1095,
12.0455

■ 34.5945, 20.5982,
7.2760

■ 32.9854, 18.2434,
4.0780

■ 32.0667, 16.8988,
2.2524

■ 31.6793, 16.3319,
1.4827

Harmonies

Analogous

The Analogous color harmony consists of three colors that are next to each other on the color wheel.



63.6452, 62.8362, 70.3629



63.4598, 62.8362, 64.6610



62.2609, 62.8362, 60.2129

Triad

The Triadic color harmony groups three colors that are evenly spaced from another and form a triangle on the color wheel.



63.4598, 62.8362, 64.6610



56.7857, 62.8362, 61.5000



59.0537, 62.8362, 80.0102

Complementary

The Complementary color scheme is a pair of colors which are on the opposite of each other on the color wheel.



63.4598, 62.8362, 64.6610



65.6911, 73.0396, 83.3097

Split Complementary

Split-complementary colors differ from the complementary color scheme. The scheme consists of three colors, the original color and two neighbors of the complement color.



57.2568, 62.8362, 77.3365



63.4598, 62.8362, 64.6610



55.9671, 62.8362, 66.5092

Square

The Square scheme is like the rectangle color scheme, but the four colors are evenly spaced on the color wheel.



63.4598, 62.8362, 64.6610



58.3973, 62.8362, 58.4607



56.1376, 62.8362, 72.3177



61.0705, 62.8362, 79.4461

Rectangle

The Rectangle color scheme consists of four colors that form a rectangle on the color wheel.



63.4598, 62.8362, 64.6610



61.0629, 62.8362, 58.4536



56.1376, 62.8362, 72.3177



58.4047, 62.8362, 79.4548

Sweetspot

The Sweet Spot groups the original color and five complimentary colors.



63.4616, 62.8390, 64.6623



91.4508, 94.7336, 101.7446



66.6651, 64.1189, 81.5365



19.3736, 19.9833, 21.3786



0.0000, 0.0000, 0.0000



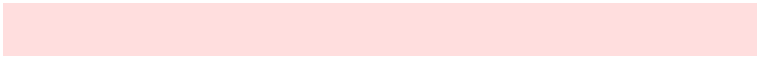
20.3446, 21.4041, 23.3091

Same Dimension

The Same Dimension uses a secret algorithm to generate beautiful new colors.



63.4616, 62.8390, 64.6623



80.4875, 78.6915, 79.9487



66.5134, 68.9427, 65.6796



14.3772, 14.3684, 14.9201



18.4753, 9.5248, 0.8647



1.3653, 0.7040, 0.0639

Inverse Universe

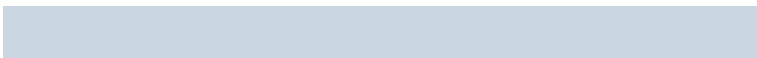
The Inverse Universe completely reimagines the original color for something new.



65.6911, 73.0396, 83.3097



83.8866, 94.2426, 108.3771



62.3964, 66.4502, 82.2114



14.8073, 16.3360, 18.5171



24.1007, 35.2634, 47.9195



1.7810, 2.6060, 3.5411

Previews

White Background



This preview shows how the XYZ color 63.4598, 62.8362, 64.6610 looks on a white background.

Color Contrast Check

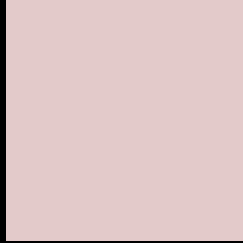
Large Text (above 18pt) WCAG AA × Fail

Any Text WCAG AA × Fail

Large Text (above 18pt) WCAG AAA × Fail

Any Text WCAG AAA × Fail

Black Background



This preview shows how the XYZ color 63.4598, 62.8362, 64.6610 looks on a black background.

Color Contrast Check

Large Text (above 18pt) WCAG AA ✓ Pass

Any Text WCAG AA ✓ Pass

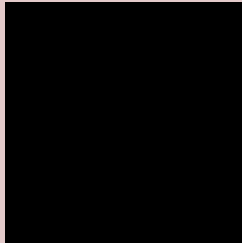
Large Text (above 18pt) WCAG AAA ✓ Pass

Any Text WCAG AAA ✓ Pass

If you want to check with other color combinations, try the [Color Contrast Checker](#).

XYZ 63.4598, 62.8362, 64.6610

Background



This preview shows how black text looks on a background with the XYZ color 63.4598, 62.8362, 64.6610.



This preview shows how white text looks on a background with the XYZ color 63.4598, 62.8362,

Color Blindness Simulation

Color vision deficiency is a very complex topic, and I could not describe the different causes any better than Wikipedia does, so if you want to learn more, you should check out their [article about color blindness](#).

Dichromacy



Original Color

63.4598, 62.8362, 64.6610

Protanopia

60.4836, 63.0305, 66.7359

Deuteranopia

64.1804, 62.8606, 64.6277



Tritanopia

65.3620, 62.9244, 73.6664

Trichromacy



Original Color

63.4598, 62.8362, 64.6610

Protanomaly

61.3457, 62.7740, 66.0101

Deuteranomaly

63.8604, 62.6956, 64.6128

Tritanomaly

64.6394, 62.9704, 70.3757

Monochromacy



Original Color

63.4598, 62.8362, 64.6610

Achromatopsia

60.6036, 63.7597, 69.4343

Achromatomaly

61.5308, 63.1978, 67.3479

CSS Examples

Text

The CSS property to change the color of the text to XYZ 63.4598, 62.8362, 64.6610 is called "color". The color property can be set on classes, ids or directly on the HTML element.

This example shows how text in the color `rgb(227, 202, 202)` looks like.

```
.text, #text, p{  
    color:rgb(227, 202, 202)  
}
```

If you want to add a text shadow in that color use the text-shadow property, you can generate a text shadow directly with our [CSS Text Shadow Generator](#).

Here you see how black text with a 4 pixel rgb(227, 202, 202) colored shadow looks like.

```
.shadow{ text-shadow: 4px 4px 2px rgb(227, 202, 202) }
```

Border

The CSS property to change the border of an element to XYZ 63.4598, 62.8362, 64.6610 is called "border". The border property can be set on classes, ids or directly on the HTML element.

This example shows the color as border, it can be applied via the CSS property "border" or "border-color".

```
.border, #border, table{ border:4px solid rgb(227, 202, 202) }
```


If only the border color should be changed use the property `border-color`.

```
.border{ border-color:rgb(227, 202, 202) }
```

If you want to add a box shadow in that color use:

Here you see how a box with a 4 pixel `rgb(227, 202, 202)` colored shadow looks like.

```
.boxshadow{ -moz-box-shadow:4px 4px 4px  
4px rgb(227, 202, 202); -webkit-box-  
shadow:4px 4px 4px 4px rgb(227, 202, 202);  
box-shadow:4px 4px 4px 4px rgb(227, 202,  
202) }
```

Background

The CSS property to change the background color of an element to XYZ 63.4598, 62.8362, 64.6610 is called "background". The background property can be set on classes, ids or directly on the HTML element.

```
.background, #background, body{  
background: rgb(227, 202, 202) }
```

If only the background color should be changed can be used:

```
.background{ background-color: rgb(227,  
202, 202) }
```

This example shows the color as background, it is applied via the CSS property "background".

To optimize and compress your CSS code, you can use our [online CSS compressor and optimizer](#) based on csstidy. If you want to create a linear or radial gradient as background or border, check our [CSS Gradient Generator](#).

Hey! You found this booklet interesting? Support Converting Colors with the new Membership Option!

The pro membership hides all ads, plus gives you double the colors in the color bucket, and more awesome pro features!

[Learn more, Memberships starting at \\$2.50/m!](#)

**Follow me
on Twitter!**

@ConvertingColor